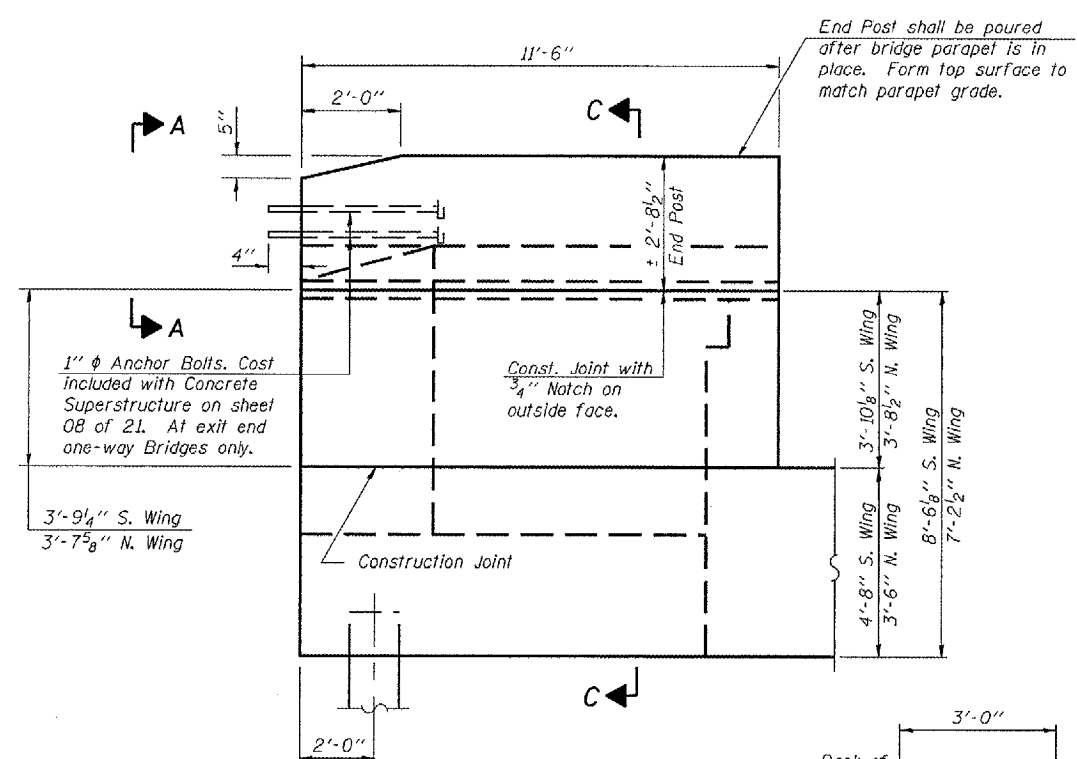


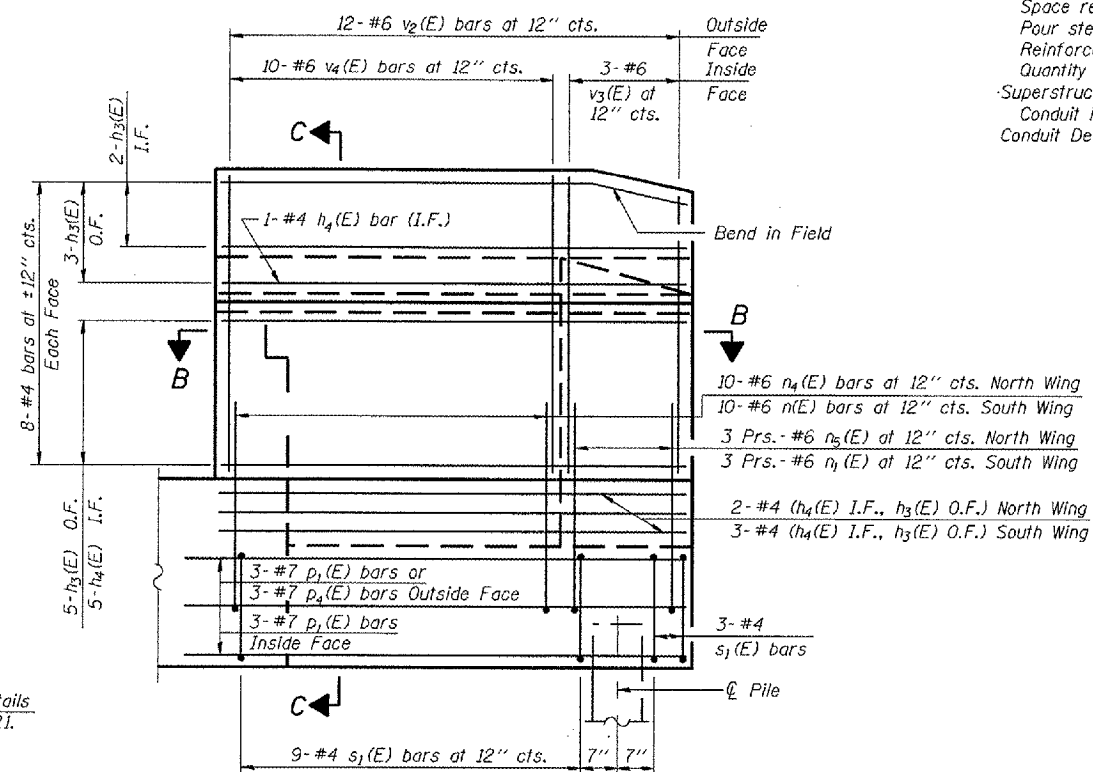
ROUTE NO.	SECTION	COUNTY	TOTAL SHEETS	SHEET NO.
FAI 72	#	SANGAMON	559	337
FAU 8071				21 SHEETS

Contract No 72541

Notes: Hatched area to be poured after superstructure forms have been removed. Quantity of concrete included with Concrete Superstructure. Space reinforcement in cap to miss anchor bolts. Pour steps monolithically with cap. Reinforcement bars designated (E) shall be epoxy coated. Quantity of concrete in end post included with Concrete Superstructure on sheet 08 of 21. Conduit is embedded in the North Wing. For details, see Conduit Details sheet in the Roadway plans.



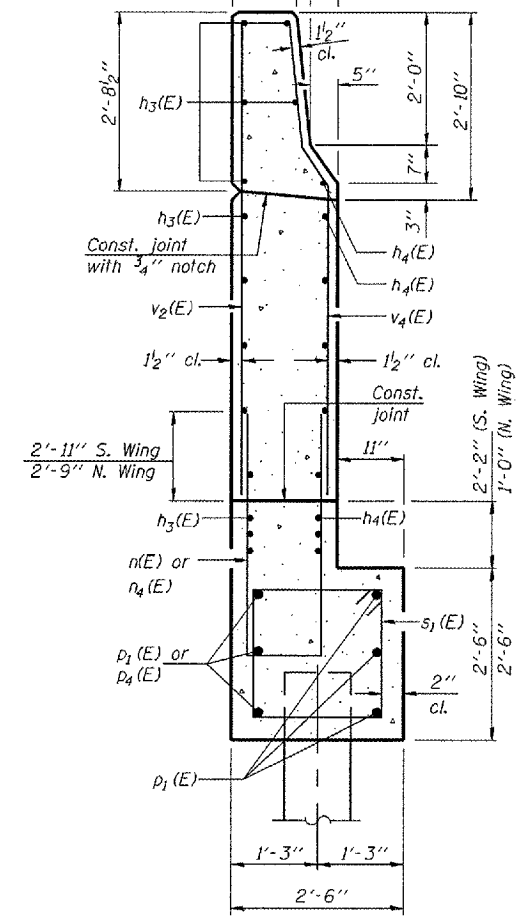
WING WALL ELEVATION
Showing Dimensions



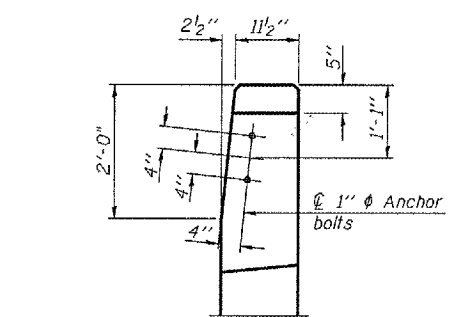
WING WALL ELEVATION
Showing Reinforcement

MIN. BAR LAPS

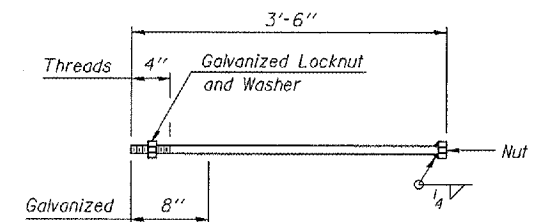
- #4 Bar - 1'-8"
- #5 Bar - 2'-2"
- #6 Bar - 2'-7"
- #7 Bar - 3'-5"



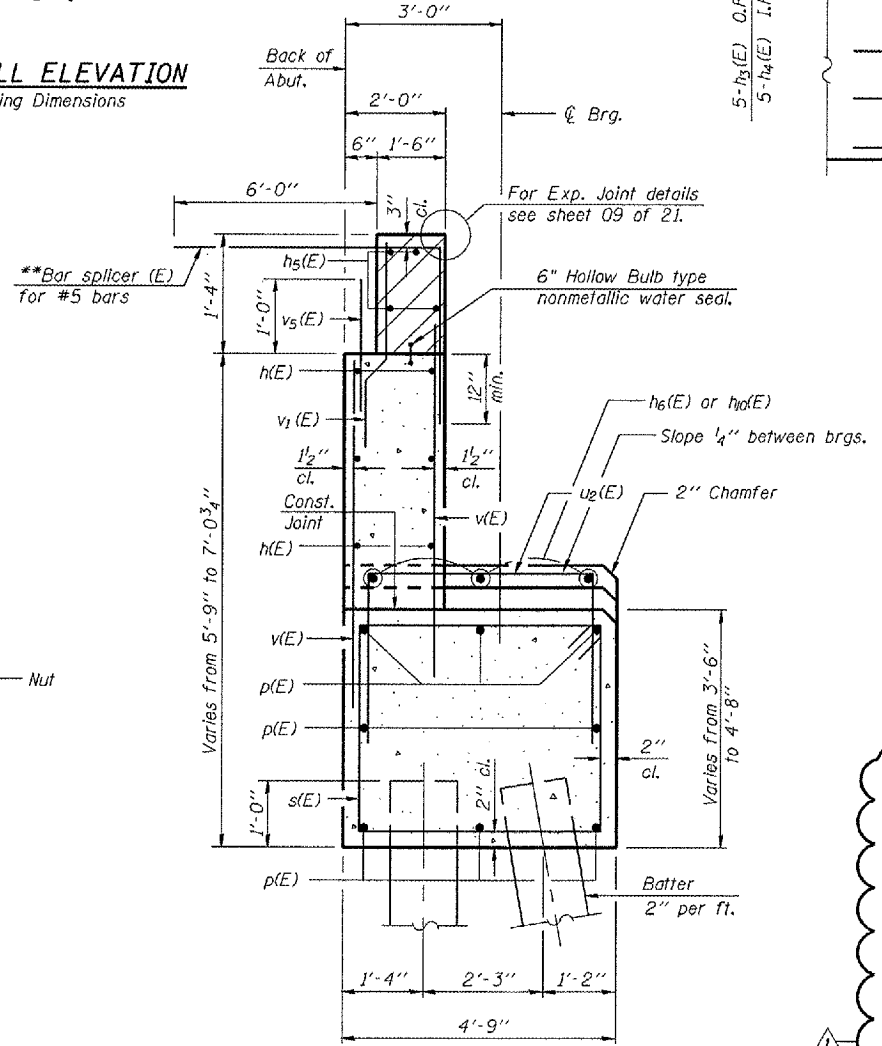
SECTION C-C



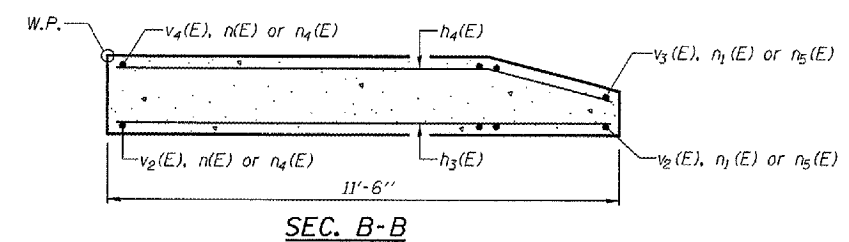
VIEW A-A



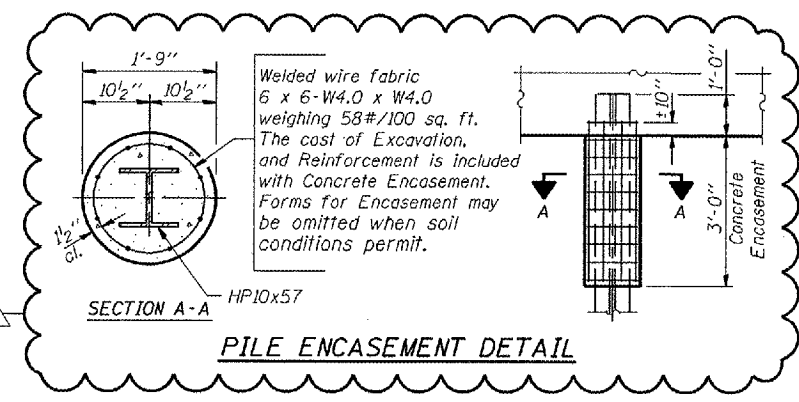
1" ANCHOR BOLT



SEC. THRU ABUT.
**Alternate with #4 v(E) bars
Place parallel to the beams



SEC. B-B



PILE ENCASEMENT DETAIL

Corporate License Number 184-001-084
WEST ABUTMENT DETAILS
 I-72/MACARTHUR BLVD. RAMP C OVER UPRR
 SECTION (84-9-4)A, H.B.K., BY, BY-1
 SANGAMON COUNTY
 STATION 46+01.97
 STRUCTURE NUMBER 084-0516

© Copyright Hanson Professional Services Inc. SMS_YEARS 96S2002B
HANSON
 DATE: 11/16/05

LAYOUT	DATE	BY	REVIEWED	DATE
MMW	06/27/03			
DAP	07/04/05			
JMM	02/24/05			