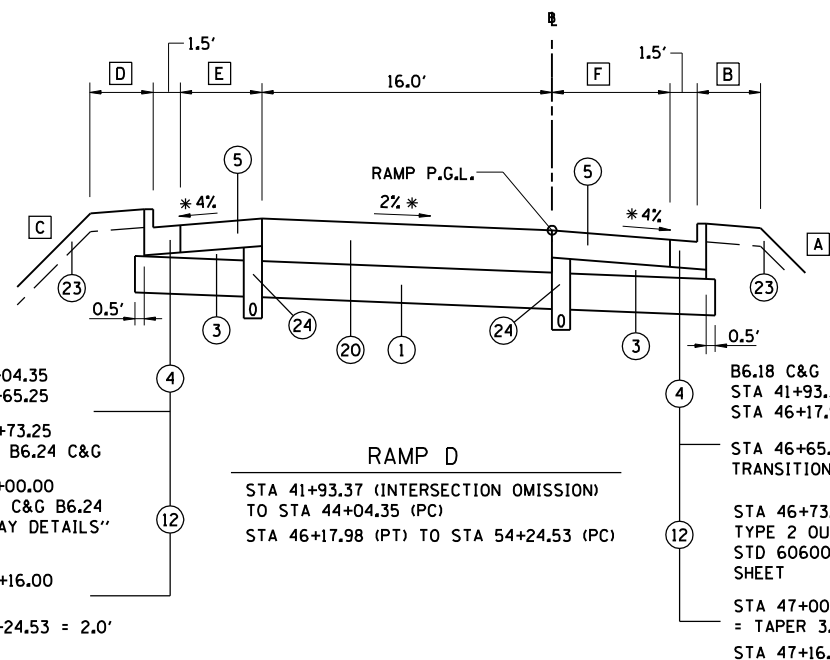


FAU ROUTE	SECTION	COUNTY	TOTAL SHEETS	SHEET NO.
8071	*	SANGAMON	559	30
STA.		TO STA.		
FED. ROAD DIST. NO.		ILLINOIS FED. AID PROJECT		
(84-9-4)A,HBK,BY,BY-1 * 02-00382-02-PV				



B6.18 C&G
 STA 41+93.37 TO STA 44+04.35
 STA 46+17.98 TO STA 46+65.25

STA 46+65.25 TO STA 46+73.25
 TRANSITION B6.18 C&G TO B6.24 C&G

STA 46+73.25 TO STA 47+00.00
 TYPE 2 OUTLET FOR CONC C&G B6.24
 STD 606006, SEE "ROADWAY DETAILS"
 SHEET

STA 47+00.00 TO STA 47+16.00
 = TAPER 3.0' TO 2.0'

STA 47+16.00 TO STA 54+24.53 = 2.0'

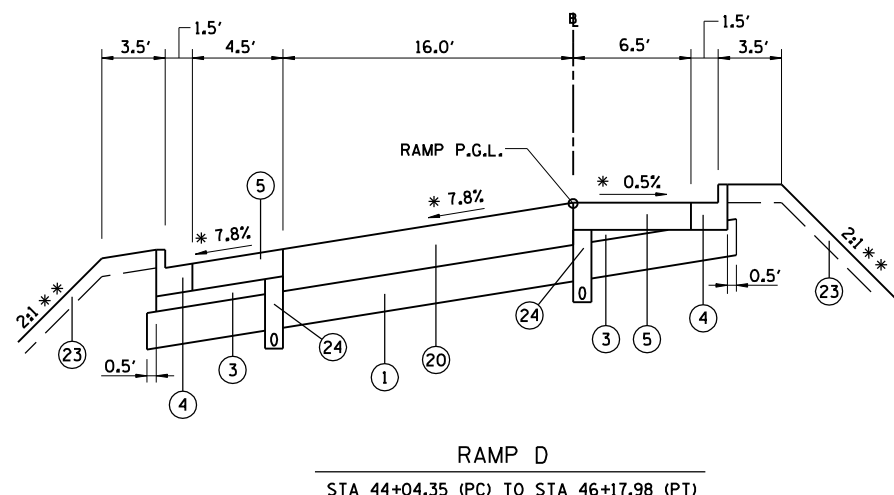
B6.18 C&G
 STA 41+93.37 TO STA 44+04.35
 STA 46+17.98 TO STA 46+65.25

STA 46+65.25 TO STA 46+73.25
 TRANSITION B6.18 C&G TO B6.24 C&G

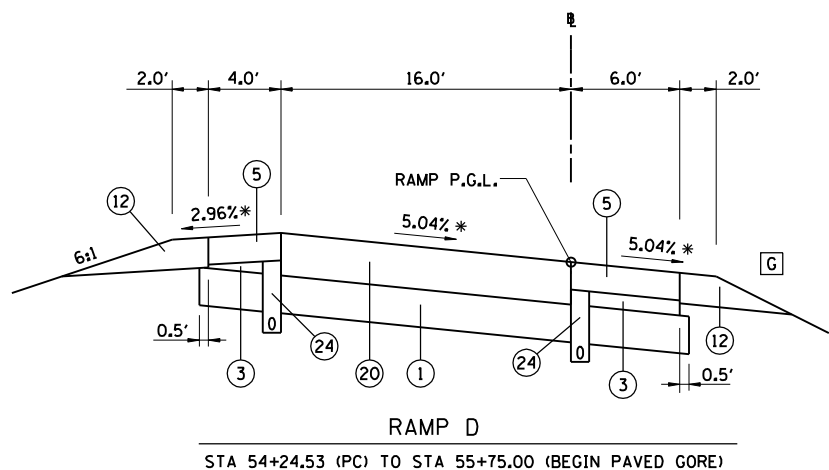
STA 46+73.25 TO STA 47+00.00
 TYPE 2 OUTLET FOR CONC C&G B6.24
 STD 606006, SEE "ROADWAY DETAILS"
 SHEET

STA 47+00.00 TO STA 47+16.00
 = TAPER 3.0' TO 2.0'

STA 47+16.00 TO STA 54+24.53 = 2.0'



RAMP D
 STA 44+04.35 (PC) TO STA 46+17.98 (PT)



RAMP D
 STA 54+24.53 (PC) TO STA 55+75.00 (BEGIN PAVED GORE)

- A** STA 41+93.37 TO STA 44+04.35 = 2:1 **
 STA 46+17.98 TO STA 47+00.00 = 2:1 **
 STA 47+00.00 TO STA 49+00.00 = 2:1 TO 4:1
 STA 49+00.00 TO STA 54+24.53 = 4:1
- B** STA 41+93.37 TO STA 44+04.35 = 3.50'
 STA 46+17.98 TO STA 49+00.00 = 3.50'
 STA 49+00.00 TO STA 49+50.00 TAPER 3.5' TO 0'
 STA 49+50.00 TO STA 54+24.53 = 0.0'
- C** STA 41+93.37 TO STA 44+04.35 = 2:1 **
 STA 46+17.18 TO STA 47+00.00 = 2:1 **
 STA 47+00.00 TO STA 49+00.00 = 2:1 TO 4:1
 STA 49+00.00 TO STA 52+50.00 = 4:1
 STA 52+50.00 TO STA 53+50.00 = TRANSITION 4:1 TO 6:1
 STA 53+50.00 TO STA 54+24.53 = 6:1
- D** STA 41+93.37 TO STA 44+04.35 = 3.50'
 STA 46+17.98 TO STA 49+00.00 = 3.50'
 STA 49+00.00 TO STA 49+50.00 = TAPER 3.5' TO 0'
 STA 49+50.00 TO STA 54+24.53 = 0.00
- E** STA 41+93.37 TO STA 44+04.35 = 4.50'
 STA 46+17.98 TO STA 46+65.25 = 4.50'
 STA 46+65.25 TO STA 46+73.25 = TAPER 4.5' TO 4.0'
 STA 46+73.25 TO STA 54+24.53 = 4.00
- F** STA 41+93.37 TO STA 44+04.35 = 6.50'
 STA 46+17.98 TO STA 46+65.25 = 6.50'
 STA 46+65.25 TO STA 46+73.25 TAPER 6.5' TO 6.0'
 STA 46+73.25 TO STA 54+24.53 = 6.00

STRUCTURAL DESIGN TRAFFIC	YEAR 2013
PV = 7647	SU = 242 MU = 161
ROAD/STREET CLASSIFICATION:	CLASS
TRAFFIC FACTOR:	ACTUAL TF = 2.22 AC TYPE = 20 MINIMUM TF = 4.74
DESIGN STRAIN =	65 MICROSTRAIN
SUBGRADE SUPPORT RATING:	POOR

* SEE RAMP SUPERELEVATION TRANSITION DETAILS.
 ** PROVIDE BENCH WITH DITCH IN 2:1 FORESLOPE.
 SEE SHEET "BENCH & DITCH DETAILS" AND STATION CROSS SECTIONS.

NOTE: SOIL MODIFICATION, PAVEMENT, SUBBASE, CURBS, SHOULDERS AND MEDIAN SHOWN FOR INFORMATION ONLY. SUBGRADE SHALL BE CONSTRUCTED 3" ABOVE PROPOSED BOTTOM OF FUTURE PAVEMENT SUBBASE. TRIMMING THE TOP 3", SOIL MODIFICATION & PAVING WILL BE BY OTHERS. SEE EMBANKMENT TYPICAL SECTIONS SHEET.

- LEGEND**
- ① PROCESSING MODIFIED SOILS 12"
 - ② BITUMINOUS CONCRETE PAVEMENT (FULL DEPTH), SUPERPAVE, 13"
 - ③ SUBBASE GRANULAR MATERIAL, TYPE C
 - ④ COMBINATION CONCRETE CURB AND GUTTER, TYPE B-6.18
 - ⑤ BITUMINOUS SHOULDERS SUPERPAVE 9"
 - ⑥ BITUMINOUS SHOULDERS SUPERPAVE 13"
 - ⑦ COMBINATION CONCRETE CURB AND GUTTER, TYPE B-6.24
 - ⑧ COMBINATION CONCRETE CURB AND GUTTER, TYPE B-6.12
 - ⑨ CONCRETE MEDIAN SURFACE, 4"
 - ⑩ SUBBASE GRANULAR MATERIAL, TYPE C 4"
 - ⑪ PORTLAND CEMENT CONCRETE SIDEWALK 4"
 - ⑫ AGGREGATE SHOULDERS, TYPE B 10"
 - ⑬ BITUMINOUS CONCRETE PAVEMENT (FULL DEPTH), SUPERPAVE, 10"
 - ⑭ BITUMINOUS CONCRETE BINDER COURSE, SUPERPAVE, N50, 1 1/2"
 - ⑮ BITUMINOUS CONCRETE SURFACE COURSE, SUPERPAVE, MIXTURE C, N50, 1 1/2"
 - ⑯ SUBBASE GRANULAR MATERIAL, TYPE A
 - ⑰ AGGREGATE SHOULDERS, TYPE B 4"
 - ⑱ AGGREGATE BASE COURSE, TYPE A 6"
 - ⑲ SAWING PAVEMENT (FULL DEPTH)
 - ⑳ BITUMINOUS CONCRETE PAVEMENT (FULL DEPTH), SUPERPAVE, 14"
 - ㉑ BITUMINOUS CONCRETE SHOULDER REMOVAL
 - ㉒ PAVEMENT REMOVAL
 - ㉓ TOPSOIL PLACEMENT 6"
 - ㉔ PIPE UNDERDRAIN STD 601001
 - ㉕ CONCRETE MEDIAN, TYPE SB-6.24 (SPECIAL)
 - ㉖ SUBBASE GRANULAR MATERIAL, TYPE A 12"

- G** STA 54+24.53 TO STA 54+75 = 4:1
 STA 54+75 TO STA 55+75 TRANSITION 4:1 TO 6:1

REVISIONS	
NAME	DATE

ILLINOIS DEPARTMENT OF TRANSPORTATION
 TYPICAL SECTIONS RAMP D -1
 FAI-72, MACARTHUR BLVD
 SEC NO. 02-00382-02-PV
 SEC NO. (84-9-4)A,HBK,BY,BY-1
 SANGAMON COUNTY, ILLINOIS

SCALE: VERT. DRAWN BY CLG
 HORIZ. CHECKED BY JAD
 DATE 12/16/2006