

FAU ROUTE	SECTION	COUNTY	TOTAL SHEETS	SHEET NO.
8071	*	SANGAMON	559	71
STA.		TO STA.		
FED. ROAD DIST. NO.		ILLINOIS FED. AID PROJECT		
(84-9-4)A,HBK,BY,BY-1 * 02-00382-02-PV				

CURVE WR1

WR P11 PI STA. = 90+40.62
 $\Delta = 0^\circ 46' 33''$ (LT)
 D = 0° 57' 18"
 R = 6,000.00'
 T = 40.62'
 L = 81.24'
 E = 0.14'
 e = N/A
 T.R. = N/A
 S.E. RUN = N/A

WR PC1 P.C. STA. = 90+00.00
 WR PT1 P.T. STA. = 90+81.24

CURVE WR2

WR P12 PI STA. = 91+21.86
 $\Delta = 0^\circ 46' 33''$ (RT)
 D = 0° 57' 18"
 R = 6,000.00'
 T = 40.62'
 L = 81.24'
 E = 0.14'
 e = N/A
 T.R. = N/A
 S.E. RUN = N/A

WR PC2 P.C. STA. = 90+81.24
 WR PT2 P.T. STA. = 91+62.48

CURVE MAC3

MAC P13 PI STA. = 696+71.38
 $\Delta = 9^\circ 51' 27''$ (LT)
 D = 0° 56' 21"
 R = 6,100.00'
 T = 526.04'
 L = 1,049.48'
 E = 22.64'
 e = N/A
 T.R. = N/A
 S.E. RUN = -----

MAC PC3 P.C. STA. = 691+45.34
 MAC PT3 P.T. STA. = 701+94.82

CURVE MAC4

MAC P14 PI STA. = 706+99.78
 $\Delta = 9^\circ 27' 51''$ (RT)
 D = 0° 56' 21"
 R = 6,100.00'
 T = 504.96'
 L = 1,007.62'
 E = 20.86'
 e = N/A
 T.R. = N/A
 S.E. RUN = -----

MAC PC4 P.C. STA. = 701+94.82
 MAC PT4 P.T. STA. = 712+02.44

CURVE MAC5

MAC P15 PI STA. = 721+26.19
 $\Delta = 25^\circ 44' 59''$ (RT)
 D = 2° 51' 53"
 R = 2,000.00'
 T = 457.14'
 L = 898.83'
 E = 51.58'
 e = 2.90%
 T.R. = 65'
 S.E. RUN = -----

MAC PC5 P.C. STA. = 716+69.05
 MAC PT5 P.T. STA. = 725+67.88

CURVE MAC6

MAC P16 PI STA. = 764+98.14
 $\Delta = 6^\circ 31' 46''$ (LT)
 D = 1° 25' 57"
 R = 4,000.00'
 T = 228.17'
 L = 455.84'
 E = 6.50'
 e = N/A
 T.R. = N/A
 S.E. RUN = N/A

MAC PC6 P.C. STA. = 762+69.97
 MAC PT6 P.T. STA. = 767+25.82

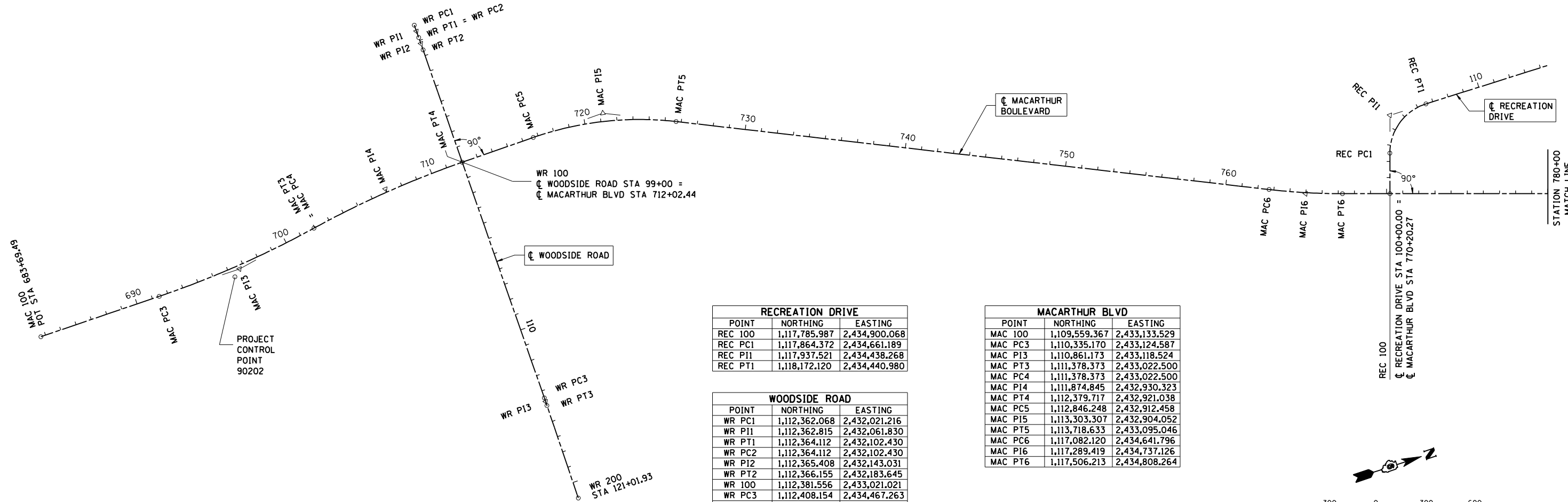
CURVE REC1

REC P11 PI STA. = 104+86.03
 $\Delta = 72^\circ 29' 44''$ (RT)
 D = 17° 54' 18"
 R = 320.00'
 T = 234.61'
 L = 404.89'
 E = 76.79'
 e = 2.00%
 T.R. = 25'
 S.E. RUN = 41'

REC PC1 P.C. STA. = 102+51.41
 REC PT1 P.T. STA. = 106+56.30

PROJECT CONTROL POINTS

POINT	NORTHING	EASTING	NOTE:
90202	1,110,818.839	2,433,156.089	SOUTH OF WOODSIDE ROAD AND IRON BRIDGE ROAD
9213	1,129,552.891	2,439,038.813	(NOT SHOWN) LOCATED AT THE NORTH END OF MACARTHUR EXTENSION EASTERLY ALONG JUNCTION CIRCLE
THSH-57	1,127,939.422	2,433,827.670	(NOT SHOWN) LOCATED AT THE NORTH END OF MACARTHUR EXTENSION WESTERLY ALONG NORTH STREET
9905 (TH-5)	1,119,907.068	2,436,668.101	SHOWN ON THE FOLLOWING SHEET
2150 (BL 150m)	1,120,399.229	2,434,248.671	SHOWN ON THE FOLLOWING SHEET



RECREATION DRIVE

POINT	NORTHING	EASTING
REC 100	1,117,785.987	2,434,900.068
REC PC1	1,117,864.372	2,434,661.189
REC P11	1,117,937.521	2,434,438.268
REC PT1	1,118,172.120	2,434,440.980

WOODSIDE ROAD

POINT	NORTHING	EASTING
WR PC1	1,112,362.068	2,432,021.216
WR P11	1,112,362.815	2,432,061.830
WR PT1	1,112,364.112	2,432,102.430
WR PC2	1,112,364.112	2,432,102.430
WR P12	1,112,365.408	2,432,143.031
WR PT2	1,112,366.155	2,432,183.645
WR 100	1,112,381.556	2,433,021.021
WR PC3	1,112,408.154	2,434,467.263
WR P13	1,112,408.615	2,434,492.361
WR PT3	1,112,408.867	2,434,517.463
WR 200	1,112,414.932	2,435,122.674

MACARTHUR BLVD

POINT	NORTHING	EASTING
MAC 100	1,109,559.367	2,433,133.529
MAC PC3	1,110,335.170	2,433,124.587
MAC P13	1,110,861.173	2,433,118.524
MAC PT3	1,111,378.373	2,433,022.500
MAC PC4	1,111,378.373	2,433,022.500
MAC P14	1,111,874.845	2,432,930.323
MAC PT4	1,112,379.717	2,432,921.038
MAC PC5	1,112,846.248	2,432,912.458
MAC P15	1,113,303.307	2,432,904.052
MAC PT5	1,113,718.633	2,433,095.046
MAC PC6	1,117,082.120	2,434,641.796
MAC P16	1,117,289.419	2,434,737.126
MAC PT6	1,117,506.213	2,434,808.264

CURVE WR3

WR P13 PI STA. = 114+71.59
 $\Delta = 0^\circ 28' 46''$ (RT)
 D = 0° 57' 18"
 R = 6,000.00'
 T = 25.10'
 L = 50.21'
 E = 0.05'
 e = N/A
 T.R. = N/A
 S.E. RUN = N/A

WR PC3 P.C. STA. = 114+46.49
 WR PT3 P.T. STA. = 114+96.69

COORDINATES BASED ON THE ILLINOIS STATE PLANE COORDINATE SYSTEM NAD83(97) WEST ZONE

ALL DISTANCES ARE GRID DISTANCES UNLESS OTHERWISE NOTED. COMBINATION FACTOR 0.99993923

ELEVATIONS BASED ON THE NORTH AMERICAN VERTICAL DATUM OF 1988 (NAVD88)

REVISIONS

NAME	DATE

ILLINOIS DEPARTMENT OF TRANSPORTATION
 CENTERLINE GEOMETRICS ROWY -1
 FAI-72, MACARTHUR BLVD
 SEC NO. 02-00382-02-PV
 SEC NO. (84-9-4)A,HBK,BY,BY-1
 SANGAMON COUNTY, ILLINOIS

SCALE: VERT. DATE 12/16/2006
 DRAWN BY CLG
 CHECKED BY JAD

