

FAU ROUTE	SECTION	COUNTY	TOTAL SHEETS	SHEET NO.
8071	*	SANGAMON	559	99
STA. 8071 TO STA. 8072		ILLINOIS FED. AID PROJECT		
184-9-41A, H.B.K. BY-1 * 02-00382-02-PV				

**LEGEND**  
 LIMITS OF REMOVAL

**NOTE:**  
 REMOVE EXISTING PIPE UNDERDRAIN, PIPE UNDERDRAIN (SPECIAL), AND END SECTIONS ALONG I-72 BETWEEN STA. 576+12.7 TO STA. 583+43.2. THE COST OF REMOVALS IS INCLUDED IN EARTH EXCAVATION. INSTALLATION OF PIPE UNDERDRAINS NOT INCLUDED IN THIS CONTRACT.

DRAINAGE STRUCTURE NOT CONSTRUCTED IN GRADING & STRUCTURES CONTRACT. SHOWN FOR INFORMATION ONLY.

**NOTE:**  
 INSTALLATION OF PIPE UNDERDRAINS NOT INCLUDED IN THIS CONTRACT.

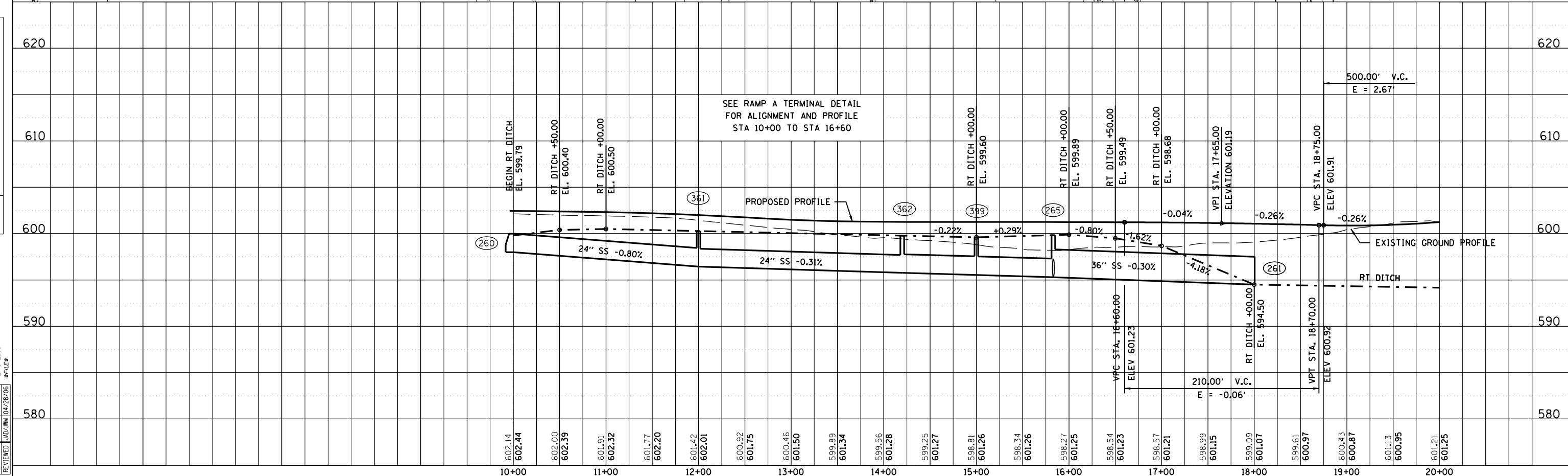
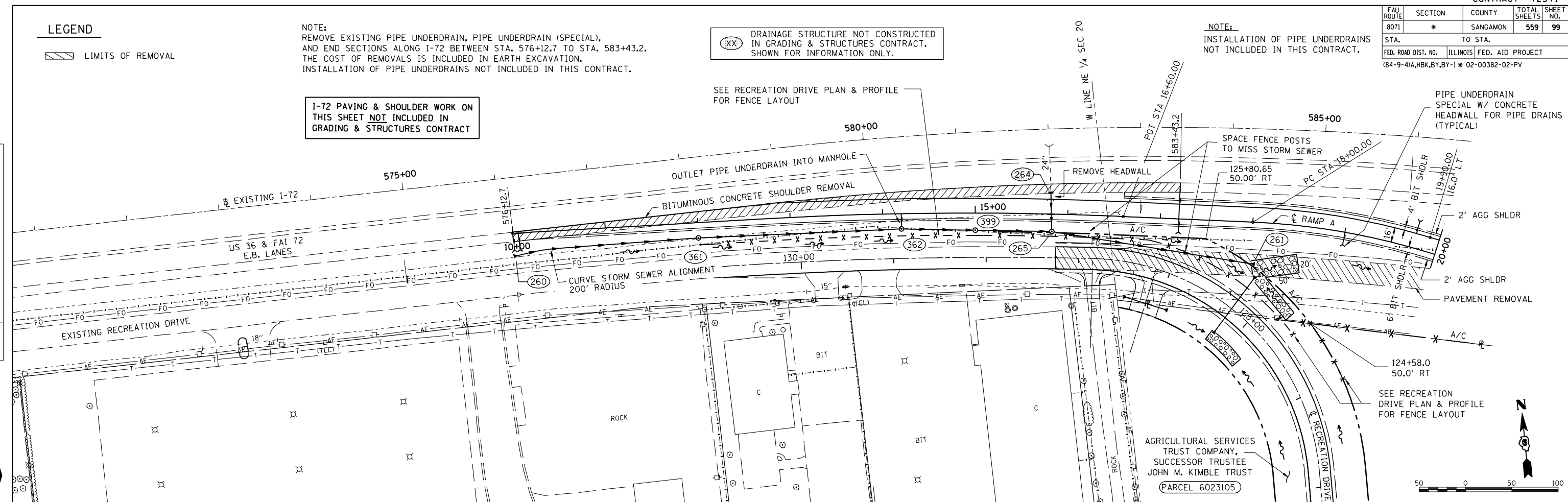
I-72 PAVING & SHOULDER WORK ON THIS SHEET NOT INCLUDED IN GRADING & STRUCTURES CONTRACT

SEE RECREATION DRIVE PLAN & PROFILE FOR FENCE LAYOUT

PIPE UNDERDRAIN SPECIAL W/ CONCRETE HEADWALL FOR PIPE DRAINS (TYPICAL)

© Copyright Hanson Professional Services Inc. 2006  
**HANSON**  
 SURVEYED BY: \_\_\_\_\_ DATE: \_\_\_\_\_  
 PLOTTED BY: \_\_\_\_\_  
 CHECKED BY: \_\_\_\_\_  
 NOTE BOOK NO.: \_\_\_\_\_  
 CAD FILE NAME: \_\_\_\_\_

PROFILE SURVEYED BY: \_\_\_\_\_ DATE: \_\_\_\_\_  
 PLOTTED BY: \_\_\_\_\_  
 CHECKED BY: \_\_\_\_\_  
 NOTE BOOK NO.: \_\_\_\_\_  
 STRUCTURE NOTATIONS CHRD: \_\_\_\_\_  
 LAYOUT CLG 04/28/06  
 DRAWN CLG 04/28/06  
 REVIEWED JSD/JM 04/28/06 12/16/2006 \$FILE\$



RAMP A STA. 10+00 TO STA. 20+00