

FAU ROUTE	SECTION	COUNTY	TOTAL SHEETS	SHEET NO.
8071	*	SANGAMON	559	105
STA.		TO STA.		
FED. ROAD DIST. NO.		ILLINOIS FED. AID PROJECT		
184-9-41A,HBK,BY,BY-1* 02-00382-02-PV				

NOTE:
 REMOVE EXISTING PIPE UNDERDRAIN, PIPE UNDERDRAIN (SPECIAL),
 AND END SECTIONS ALONG I-72 BETWEEN STA. 615+90 TO STA. 625+50
 THE COST OF REMOVALS IS INCLUDED IN EARTH EXCAVATION.
 INSTALLATION OF PIPE UNDERDRAINS NOT INCLUDED IN THIS CONTRACT.

(XX) DRAINAGE STRUCTURE NOT CONSTRUCTED
 IN GRADING & STRUCTURES CONTRACT.
 SHOWN FOR INFORMATION ONLY.

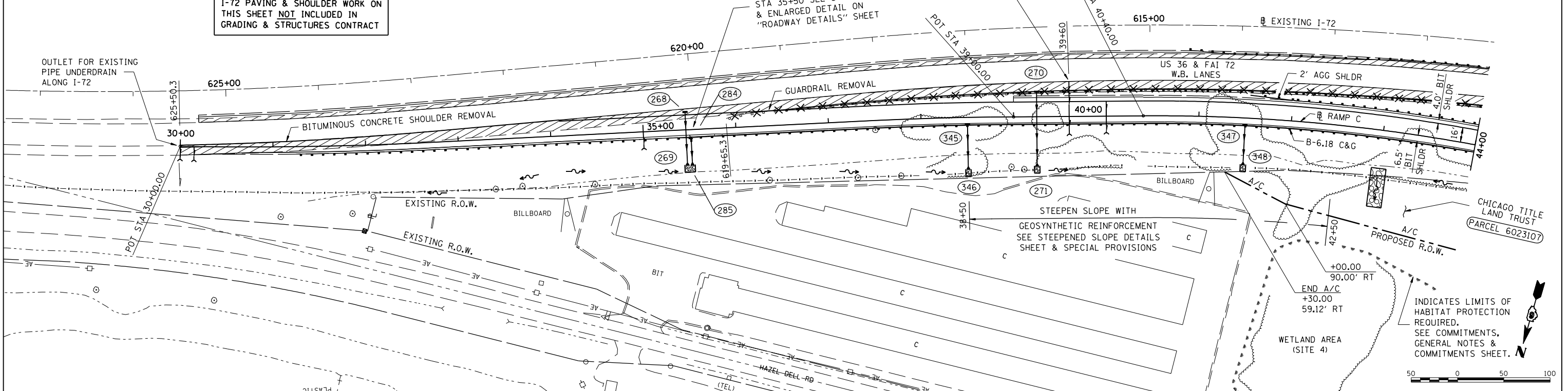
THE EMBANKMENT IN THE AREA OF STEEPENED SLOPE (>2:1)
 SHALL BE CONSTRUCTED OF MATERIAL THAT CAN SUPPORT
 VEGETATION WITHOUT THE ADDITION OF TOPSOIL. MATERIALS
 OBTAINED FROM THE PROPOSED SOUTH BORROW AREA ARE
 GENERALLY NOT SUITED FOR PROMOTING VEGETATION GROWTH.

I-72 PAVING & SHOULDER WORK ON
 THIS SHEET NOT INCLUDED IN
 GRADING & STRUCTURES CONTRACT

BEGIN TY 2 OUTLET FOR
 CONC C&G B6.24 AT
 STA 35+50 SEE STD 606006
 & ENLARGED DETAIL ON
 "ROADWAY DETAILS" SHEET

OUTLET FOR EXISTING
 PIPE UNDERDRAIN
 ALONG I-72

OUTLET FOR EXISTING
 PIPE UNDERDRAIN
 ALONG I-72



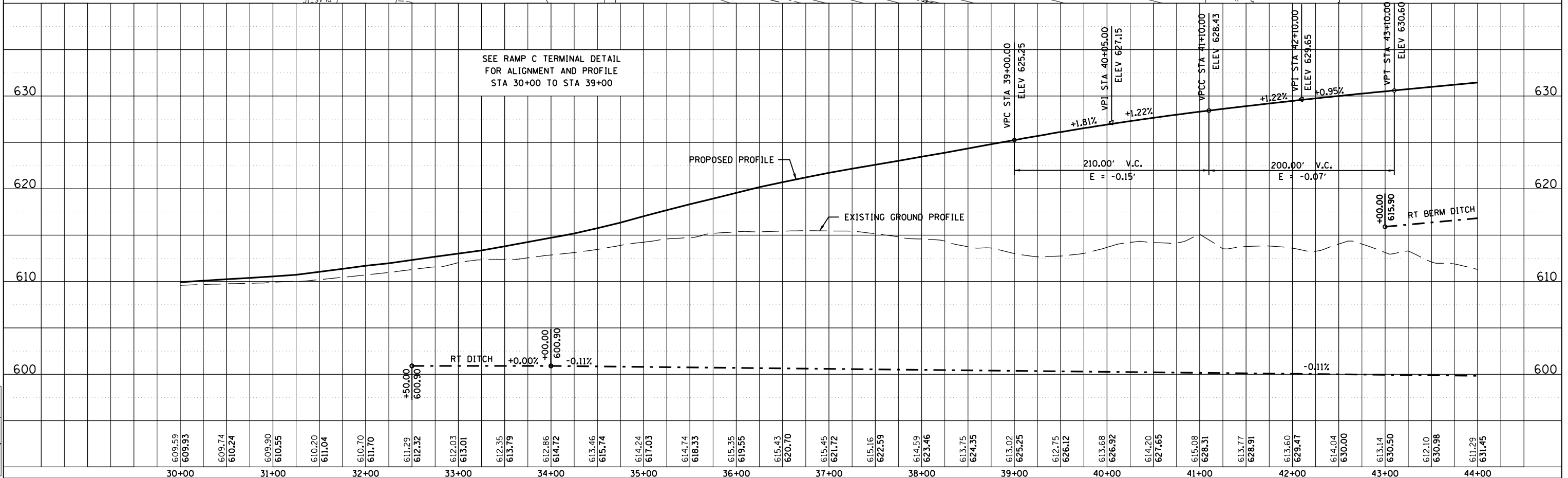
INDICATES LIMITS OF
 HABITAT PROTECTION
 REQUIRED.
 SEE COMMITMENTS,
 GENERAL NOTES &
 COMMITMENTS SHEET.



PLAN	DATE
SURVEYED	
DESIGNED	
CHECKED	
BY	
DATE	



PROFILE	DATE
SURVEYED	
DESIGNED	
CHECKED	
BY	
DATE	



SEE RAMP C TERMINAL DETAIL
 FOR ALIGNMENT AND PROFILE
 STA 30+00 TO STA 39+00

PROPOSED PROFILE

EXISTING GROUND PROFILE

LAYOUT	CLG	DATE
REVIEWED	LMJ/AMJ	04/28/06
DRAWN	CLG	04/28/06
DATE		12/16/2006