

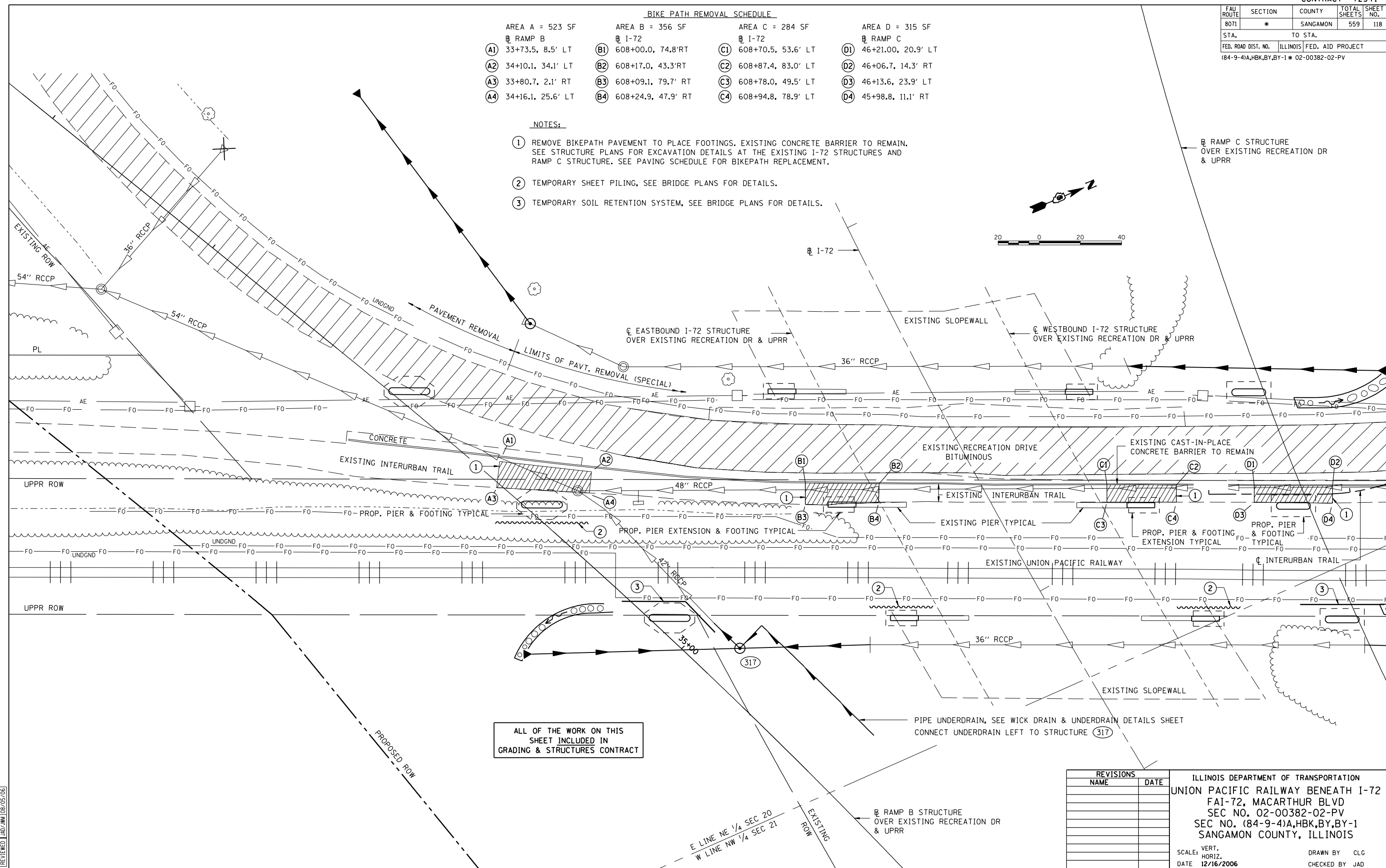
FAU ROUTE	SECTION	COUNTY	TOTAL SHEETS	SHEET NO.
8071	*	SANGAMON	559	118
STA.		TO STA.		
FED. ROAD DIST. NO.		ILLINOIS FED. AID PROJECT		
(84-9-4)A,HBK,BY,BY-1 * 02-00382-02-PV				

BIKE PATH REMOVAL SCHEDULE

AREA A = 523 SF	AREA B = 356 SF	AREA C = 284 SF	AREA D = 315 SF
RAMP B	I-72	I-72	RAMP C
(A1) 33+73.5, 8.5' LT	(B1) 608+00.0, 74.8' RT	(C1) 608+70.5, 53.6' LT	(D1) 46+21.00, 20.9' LT
(A2) 34+10.1, 34.1' LT	(B2) 608+17.0, 43.3' RT	(C2) 608+87.4, 83.0' LT	(D2) 46+06.7, 14.3' RT
(A3) 33+80.7, 2.1' RT	(B3) 608+09.1, 79.7' RT	(C3) 608+78.0, 49.5' LT	(D3) 46+13.6, 23.9' LT
(A4) 34+16.1, 25.6' LT	(B4) 608+24.9, 47.9' RT	(C4) 608+94.8, 78.9' LT	(D4) 45+98.8, 11.1' RT

NOTES:

- 1 REMOVE BIKEPATH PAVEMENT TO PLACE FOOTINGS. EXISTING CONCRETE BARRIER TO REMAIN. SEE STRUCTURE PLANS FOR EXCAVATION DETAILS AT THE EXISTING I-72 STRUCTURES AND RAMP C STRUCTURE. SEE PAVING SCHEDULE FOR BIKEPATH REPLACEMENT.
- 2 TEMPORARY SHEET PILING, SEE BRIDGE PLANS FOR DETAILS.
- 3 TEMPORARY SOIL RETENTION SYSTEM, SEE BRIDGE PLANS FOR DETAILS.



ALL OF THE WORK ON THIS SHEET INCLUDED IN GRADING & STRUCTURES CONTRACT



REVISIONS	
NAME	DATE

ILLINOIS DEPARTMENT OF TRANSPORTATION
 UNION PACIFIC RAILWAY BENEATH I-72
 FAI-72, MACARTHUR BLVD
 SEC NO. 02-00382-02-PV
 SEC NO. (84-9-4)A,HBK,BY,BY-1
 SANGAMON COUNTY, ILLINOIS

SCALE: VERT. _____
 HORIZ. _____
 DATE: 12/16/2006

DRAWN BY: CLG
 CHECKED BY: JAD

12/16/2006 \$FILES
 LAYOUT CLG 08/05/06
 DRAWN CLG 08/05/06
 REVIEWED JAD/JMW 09/05/06

E LINE NE 1/4 SEC 20
 W LINE NW 1/4 SEC 21