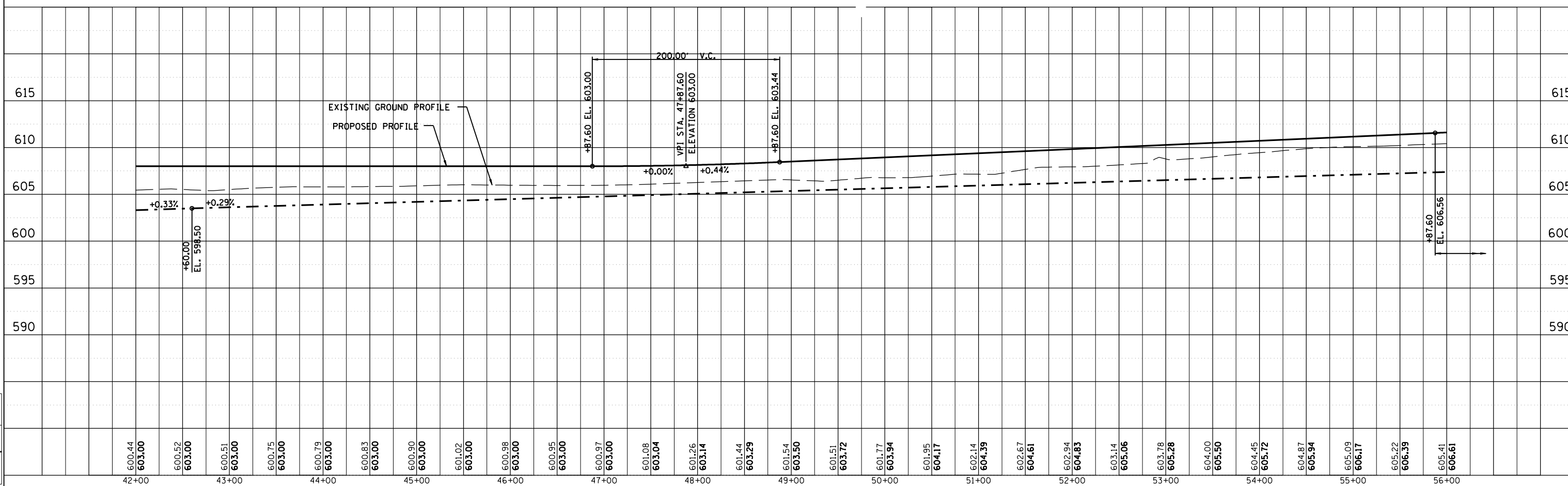
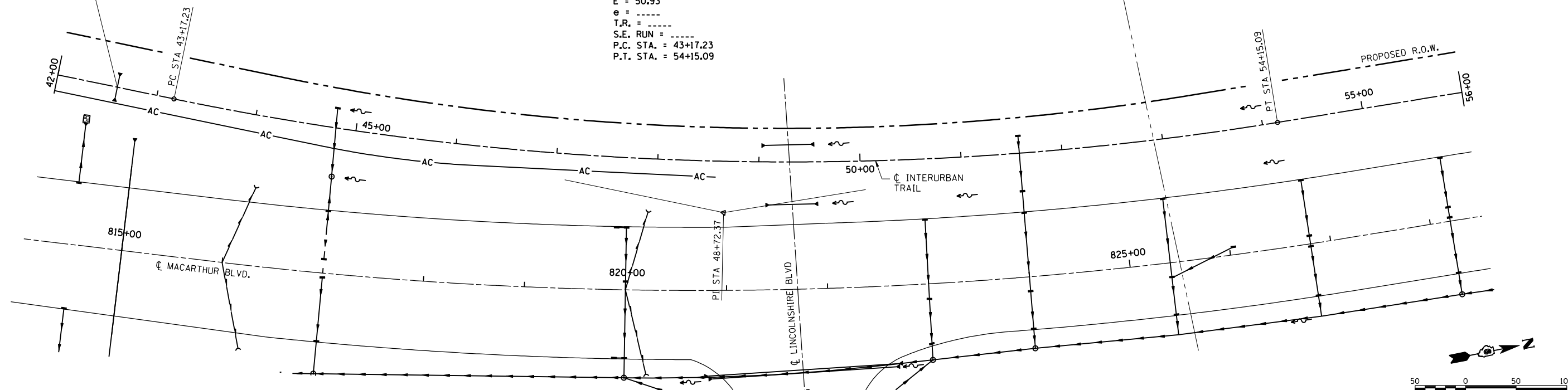


FAU ROUTE	SECTION	COUNTY	TOTAL SHEETS	SHEET NO.
8071	*	SANGAMON	559	125
STA.		TO STA.		
FED. ROAD DIST. NO.		ILLINOIS FED. AID PROJECT		
(84-9-4)A,HBK,BY,BY-1		* 02-00382-02-PV		

PIPE CULVERT TYPE I RCCP 36" - 21 LF  
 USFL 42+60, 18' LT EL. 598.50  
 DSFL 42+60, 19' RT EL. 598.50  
 2 PRECAST REINFORCED CONCRETE FLARED  
 END SECTIONS WITH GRATING

PROP. CURVE IUT-7  
 PI STA. = 48+72.37  
 $\Delta = 20^\circ 58' 03''$  (LT)  
 $D = 1^\circ 54' 35''$   
 $R = 3,000.00'$   
 $T = 555.14'$   
 $L = 1,097.85'$   
 $E = 50.93'$   
 $e = \text{-----}$   
 $T.R. = \text{-----}$   
 $S.E. RUN = \text{-----}$   
 $P.C. STA. = 43+17.23$   
 $P.T. STA. = 54+15.09$



INTERURBAN TRAIL STA 42+00 TO STA 56+00

PLAN	SURVEYED	BY	DATE
NO. _____	PLOTTED _____		
	CHECKED _____		
	BY _____		
	DATE _____		



PROFILE	SURVEYED	BY	DATE
NO. _____	PLOTTED _____		
	CHECKED _____		
	BY _____		
	DATE _____		

LAYOUT	CLG	04/28/06
DRAWN	CLG	04/28/06
REVIEWED	JSD/JM	04/28/06

12/16/2006 \$FILES