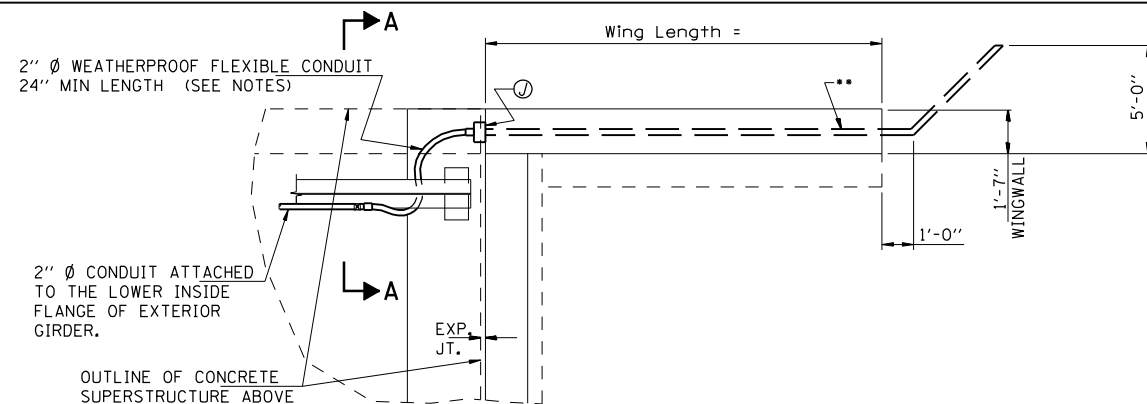


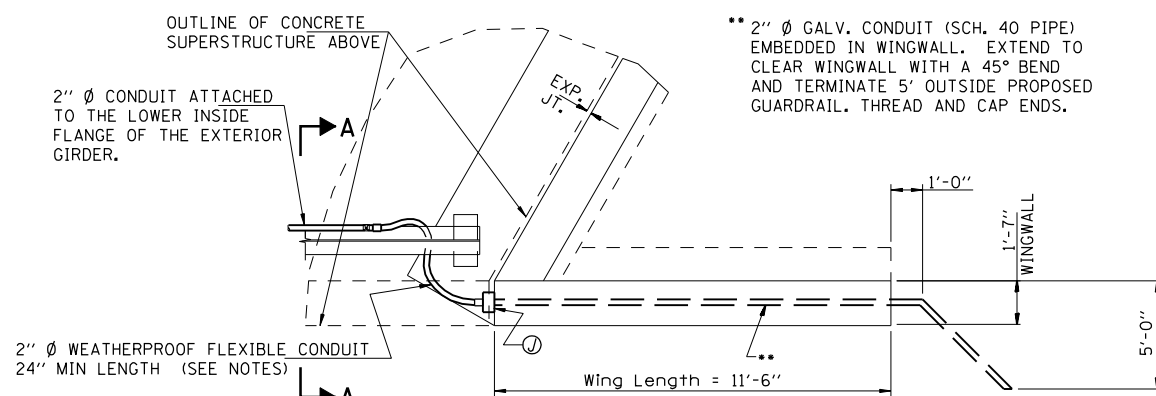
| | | | | |
|--|---------|---------------------------|--------------|-----------|
| FAU ROUTE | SECTION | COUNTY | TOTAL SHEETS | SHEET NO. |
| 8071 | * | SANGAMON | 559 | 178 |
| STA. | | TO STA. | | |
| FED. ROAD DIST. NO. | | ILLINOIS FED. AID PROJECT | | |
| (84-9-4)A,HBK,BY,BY-1 * 02-00382-02-PV | | | | |

NOTES:

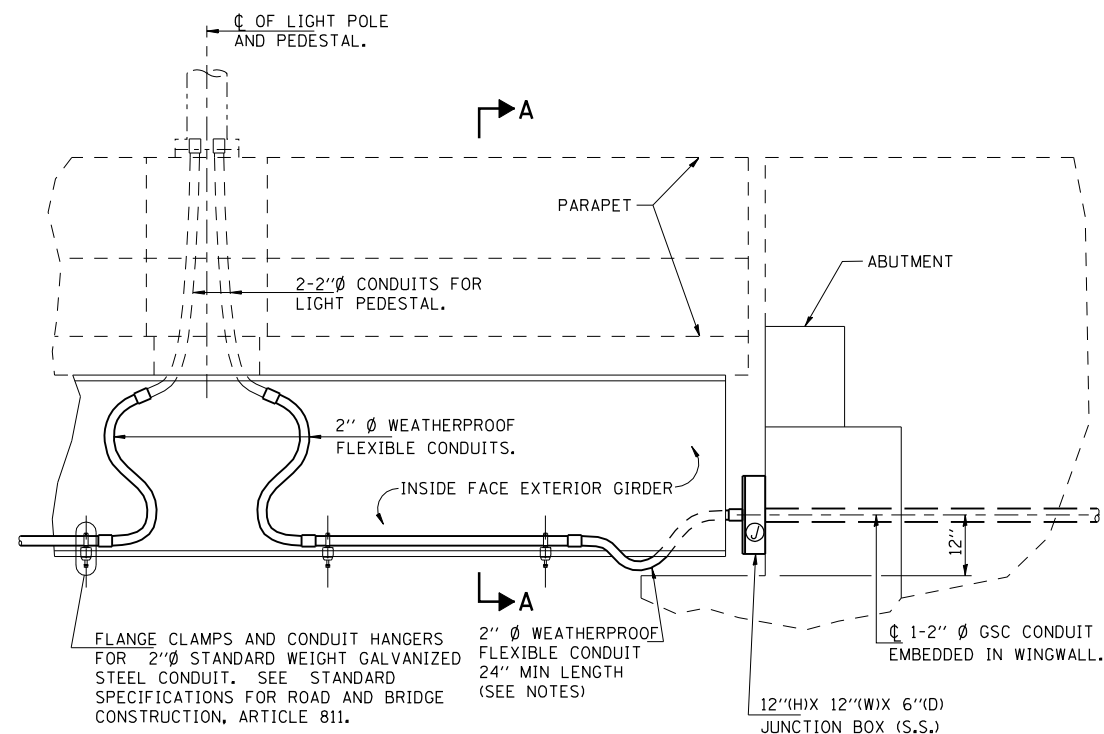
- ALL EMBEDDED CONDUITS SHALL BE 2"Ø GALVANIZED STEEL, SCHEDULE 40.
- 2" FLEXIBLE CONDUIT SHALL BE 24" (MIN.) IN LENGTH. IT SHALL HAVE SUFFICIENT SLACK TO ALLOW DESIGNED DEFLECTION AND EXPANSION. THESE DIMENSIONS (SLACK) CAN BE OBTAINED FROM THE RESIDENT ENGINEER.
- ALL JUNCTION BOXES ATTACHED TO THE STRUCTURE SHALL BE STAINLESS STEEL NEMA 4X (PER ARTICLE 1088.04), SIZE AS SPECIFIED. THE DOOR SHALL HAVE A STAINLESS STEEL CONTINUOUS HINGE PIN AND CLAMP ASSEMBLY.
- THE CONTRACTOR SHALL NOT DRILL ANY HOLES IN THE BEAM, DECK OR SUPERSTRUCTURE OF THE BRIDGE OR WELD TO THE STRUCTURE UNLESS OTHERWISE SPECIFIED.
- CONDUIT SHALL EXIT WINGWALL IN A LONGITUDINAL STRAIGHT LINE.
- ALL JUNCTION BOXES SHALL HAVE A 1/2"Ø WIRE MESH COVERED DRAIN IN THE BOTTOM.
- ALL JUNCTION BOXES SHALL BE EQUIPPED WITH A PADLOCK.
- LIQUID-TIGHT FLEXIBLE METAL CONDUIT WILL NOT BE MEASURED FOR PAYMENT, BUT SHALL BE CONSIDERED AS INCLUDED IN THE BID PRICE FOR CONDUIT ATTACHED TO STRUCTURE.



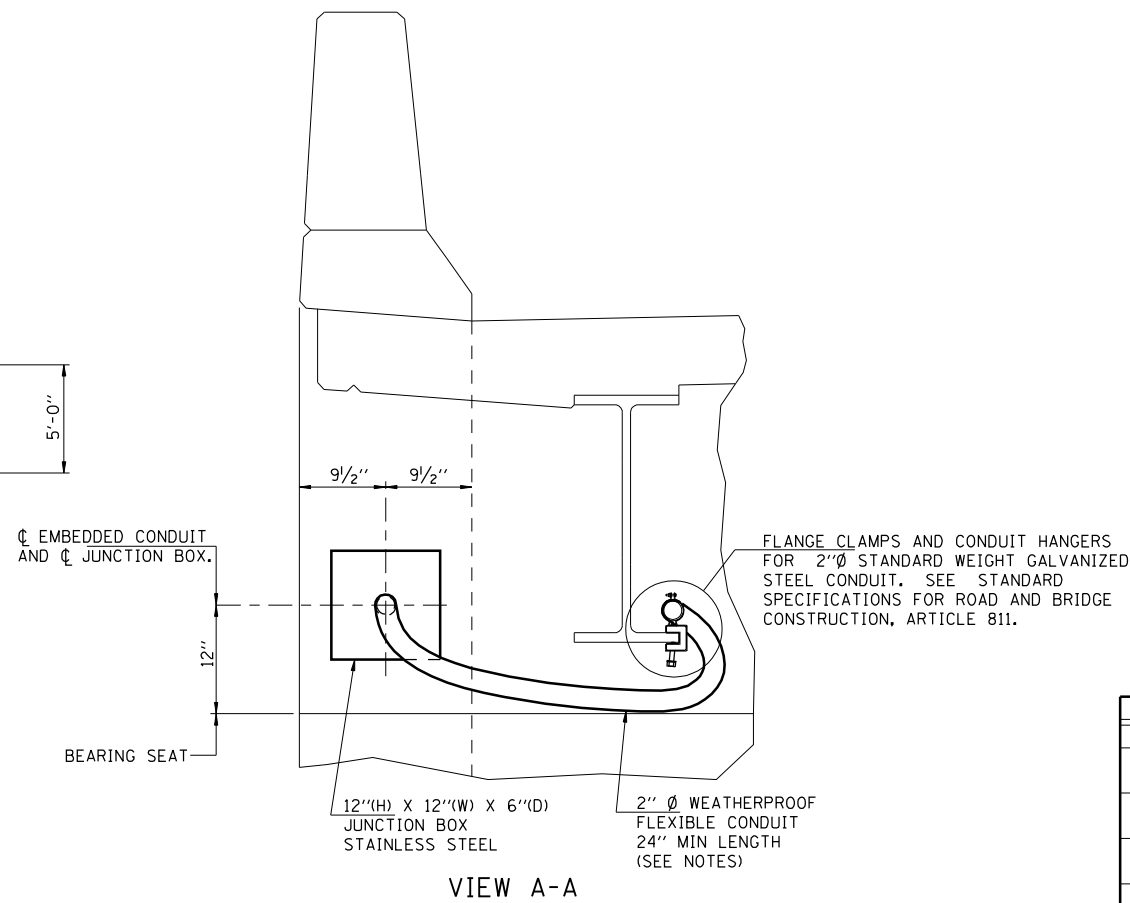
PARTIAL PLAN AT PILE BENT ABUTMENTS - RT. ANGLE CONDITION



PARTIAL PLAN AT PILE BENT ABUTMENTS - SKEWED CONDITION



PARTIAL LONGITUDINAL INTERIOR SECTION AT PILE BENT ABUTMENTS



VIEW A-A

***BILL OF MATERIAL**

| PAY CODE | ITEM | UNIT | QUANTITY |
|----------|--|------|----------|
| 81000600 | CONDUIT IN TRENCH 2" DIA., GALVANIZED STEEL | FOOT | 29 |
| 81100600 | CONDUIT ATTACHED TO STRUCTURE, 2" DIA. GALVANIZED STEEL | FOOT | 545 |
| 81200120 | CONDUIT EMBEDDED IN STRUCTURE, 2" DIA. GALVANIZED STEEL | FOOT | 46 |
| 81300550 | JUNCTION BOX, STAINLESS STEEL, ATTACHED TO STRUCTURE, 12"x12"x6" | EACH | 4 |
| 81900200 | TRENCH AND BACK FILL FOR ELECTRICAL WORK | FOOT | 29 |

* Quantities shown above are for
SN 084-0514 (Ramp B Over UPRR)
SN 084-0516 (Ramp C Over UPRR)

| REVISIONS | |
|-----------|------|
| NAME | DATE |
| | |
| | |
| | |
| | |
| | |
| | |
| | |
| | |
| | |

ILLINOIS DEPARTMENT OF TRANSPORTATION
LIGHTING DETAILS -1
CONDUIT ATTACHED TO STRUCTURE
SEC NO. 02-00382-02-PV
SEC NO. (84-9-4)A,HBK,BY,BY-1
SANGAMON COUNTY, ILLINOIS

SCALE: VERT. HORIZ. DATE: 12/16/2006
DRAWN BY: JAP
CHECKED BY: JWM

⊙ = JUNCTION BOX