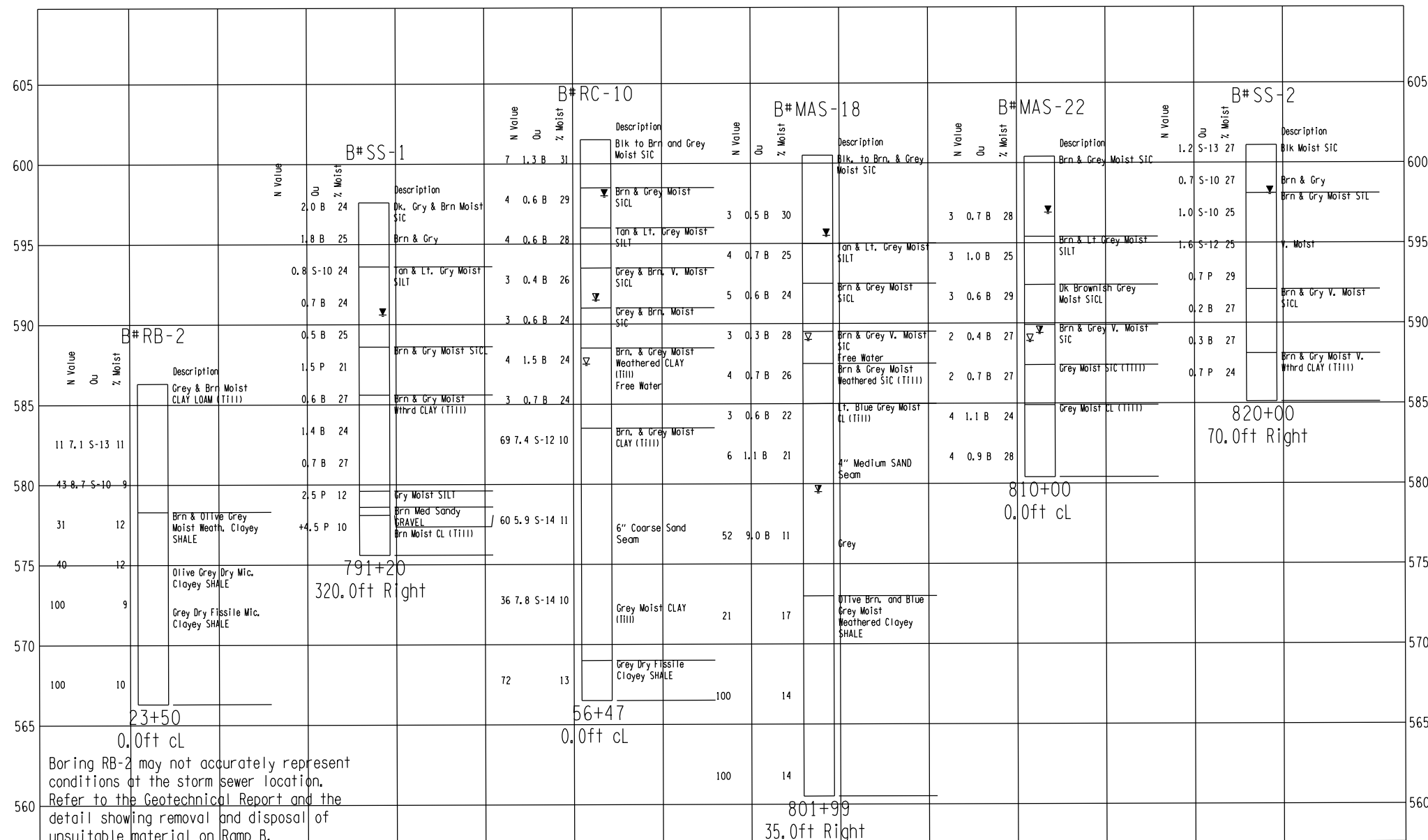


| FAU ROUTE | SECTION | COUNTY | TOTAL SHEETS | SHEET NO. |
|--|---------|---------------------------|--------------|-----------|
| 8071 | * | SANGAMON | 559 | 194 |
| STA. | | TO STA. | | |
| FED. ROAD DIST. NO. | | ILLINOIS FED. AID PROJECT | | |
| (84-9-4)A,HBK,BY,BY-1 * 02-00382-02-PV | | | | |



SUBSURFACE DATA PROFILE D96-536-02 MACARTHUR EXTENSION.GPJ D6TEMPLT.GDT 12/22/05

SUBSURFACE DATA PROFILE D96-536-02 MACARTHUR EXTENSION.GPJ D6TEMPLT.GDT 12/22/05

Selected borings have been shown. Complete boring data is available in the project Geotechnical Report.

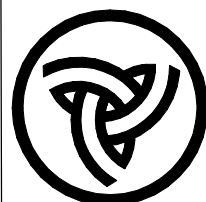
NOT TO HORIZONTAL SCALE

VARIATIONS IN SUBSURFACE CONDITIONS MAY EXIST BETWEEN BORINGS

SUBSURFACE DATA PROFILE

Route: FAI 72/FAU 8021
 Section: (84-9-4) HBK, BY, BY-1 / 02-00382-02-PV
 County: Sangamon

Sheet 1 of 2



Illinois Department of Transportation
 Division of Highways
 100T District 6

Groundwater
 ▽ First Encounter
 ▽ Completion
 ▽ after (refer to log) hours

Abbreviations
 WOH - Sampler Advanced by Weight of Hammer, WOP - Weight of Pipe
 B.S. - Before Seating

STORM SEWER BORINGS

| REVISIONS | |
|-----------|------|
| NAME | DATE |
| | |
| | |
| | |
| | |
| | |
| | |
| | |
| | |
| | |
| | |

ILLINOIS DEPARTMENT OF TRANSPORTATION
 BORINGS -1
 FAI-72, MACARTHUR BLVD
 SEC NO. 02-00382-02-PV
 SEC NO. (84-9-4)A,HBK,BY,BY-1
 SANGAMON COUNTY, ILLINOIS

SCALE: VERT. 1"=10'
 HORIZ. 1"=40'
 DATE: 12/16/2006

DRAWN BY: HEI
 CHECKED BY: JWM



| | | |
|----------|---------|----------|
| LAYOUT | CLG | 08/05/06 |
| DRAWN | CLG | 08/05/06 |
| REVIEWED | JMD/JMW | 09/05/06 |