

FAU ROUTE	SECTION	COUNTY	TOTAL SHEETS	SHEET NO.
8071	*	SANGAMON	559	197
STA.		TO STA.		
FED. ROAD DIST. NO.	ILLINOIS	FED. AID PROJECT		
(84-9-4)A,HBK,BY,BY-1 * 02-00382-02-PV				



Illinois Department of Transportation  
Division of Highways  
001 District 6

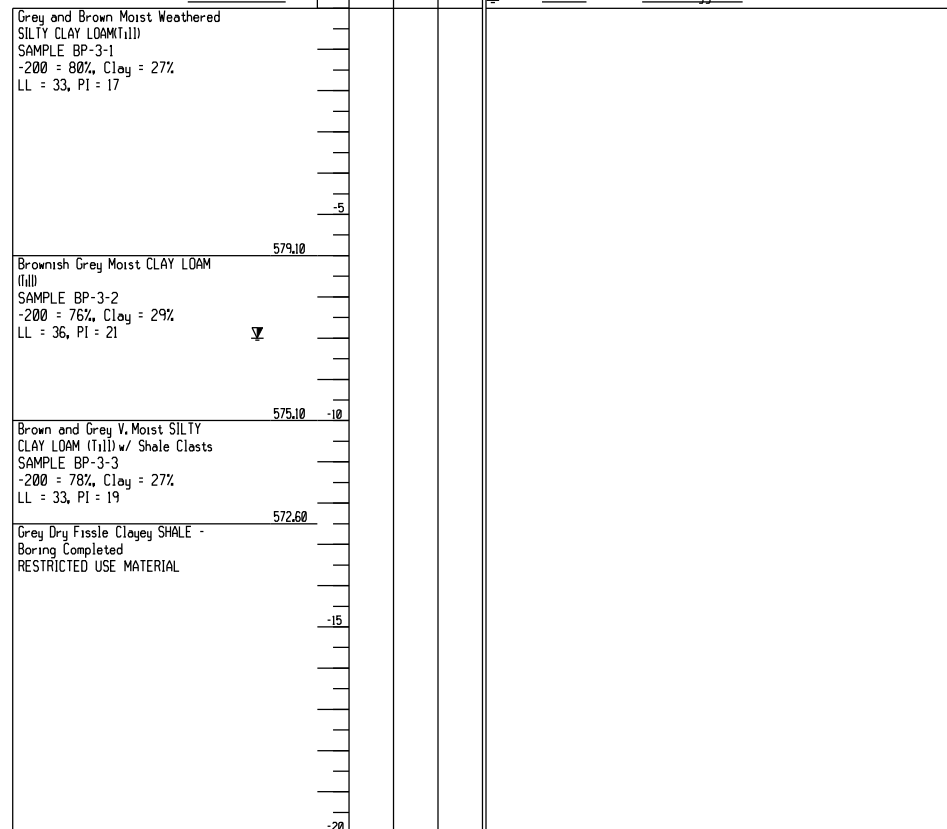
SOIL BORING LOG

Page 1 of 1

Date 8/13/03

ROUTE FAI 72/FAU 8021 DESCRIPTION City Southwest Facility Borrow Area LOGGED BY M. Tappan  
SECTION / 02-00382-02-PV LOCATION NE 1/4, SEC. 20, TWP. 15 N, RING. 5 W, 3 PM  
COUNTY Sangamon DRILLING METHOD HSA HAMMER TYPE N/A

STRUCT. NO.	N/A	D	B	U	M	Surface Water Elev.	N/A	ft
Station	N/A	E	L	C	O	Stream Bed Elev.	N/A	ft
BORING NO.	BP-3	P	W	S	I	Groundwater Elev.:		
Station	26+25	T	W	S	O	First Encounter	No Encounter	ft
Offset	75.0 ft Right	H	S	O	U	Upon Completion	577.1	ft
Ground Surface Elev.	585.1	(ft)	/6'	(tsf)	(oz)	After		Hrs. Plugged



The Unconfined Compressive Strength (UCS) Failure Mode is indicated by (B-Bulge, S-Shear, P-Penetrometer, E-Estimated)  
Abbreviations W.O.H - Sampler Advanced By Weight of Hammer, W.O.P - Advanced by Weight of Pipe, B.S. - Before Seating  
The SPT (N value) is the sum of the last two blow values in each sampling zone (AASHTO T206) BBS, from 137 (Rev. 8-99)

File Name: SAS\SL\SOIL FILES\SANGAMON\096-536-R2\MACARTHUR\BTR\EXTENS\LOG1.DAT Date Printed: 12/22/06  
Latitude Longitude Datum Job Number



Illinois Department of Transportation  
Division of Highways  
001 District 6

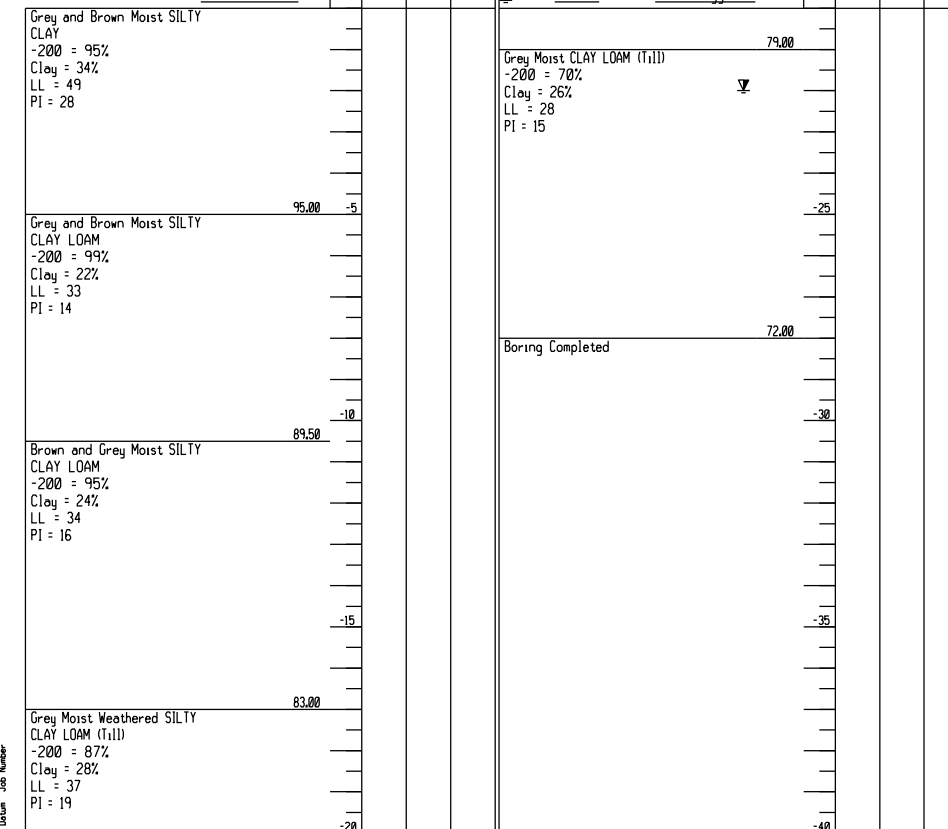
SOIL BORING LOG

Page 1 of 1

Date 8/13/03

ROUTE FAI 72/FAU 8021 DESCRIPTION West Borrow Pit Area LOGGED BY M. Tappan  
SECTION / 02-00382-02-PV LOCATION SW 1/4, SEC. 18, TWP. 15 N, RING. 5 W, 3 PM  
COUNTY Sangamon DRILLING METHOD HSA HAMMER TYPE N/A

STRUCT. NO.	N/A	D	B	U	M	Surface Water Elev.	N/A	ft
Station	N/A	E	L	C	O	Stream Bed Elev.	N/A	ft
BORING NO.	WBP-1	P	W	S	I	Groundwater Elev.:		
Station		T	W	S	O	First Encounter		ft
Offset		H	S	O	U	Upon Completion	78.0	ft
Ground Surface Elev.	100	(ft)	/6'	(tsf)	(oz)	After		Hrs. Plugged



The Unconfined Compressive Strength (UCS) Failure Mode is indicated by (B-Bulge, S-Shear, P-Penetrometer, E-Estimated)  
Abbreviations W.O.H - Sampler Advanced By Weight of Hammer, W.O.P - Advanced by Weight of Pipe, B.S. - Before Seating  
The SPT (N value) is the sum of the last two blow values in each sampling zone (AASHTO T206) BBS, from 137 (Rev. 8-99)

File Name: SAS\SL\SOIL FILES\SANGAMON\096-536-R2\MACARTHUR\BTR\EXTENS\LOG1.DAT Date Printed: 12/22/06  
Latitude Longitude Datum Job Number

© Copyright Hanson Professional Services Inc. \$MS\_YEAR\$



12/16/2006 \$FILES

LAYOUT	CLG	08/05/06
DRAWN	CLG	08/05/06
REVIEWED	JAD/JMW	08/05/06

REVISIONS	
NAME	DATE

BORROW PIT BORINGS  
ILLINOIS DEPARTMENT OF TRANSPORTATION  
BORINGS -4  
FAI-72, MACARTHUR BLVD  
SEC NO. 02-00382-02-PV  
SEC NO. (84-9-4)A,HBK,BY,BY-1  
SANGAMON COUNTY, ILLINOIS  
SCALE: VERT. DATE 12/16/2006  
DRAWN BY  
CHECKED BY