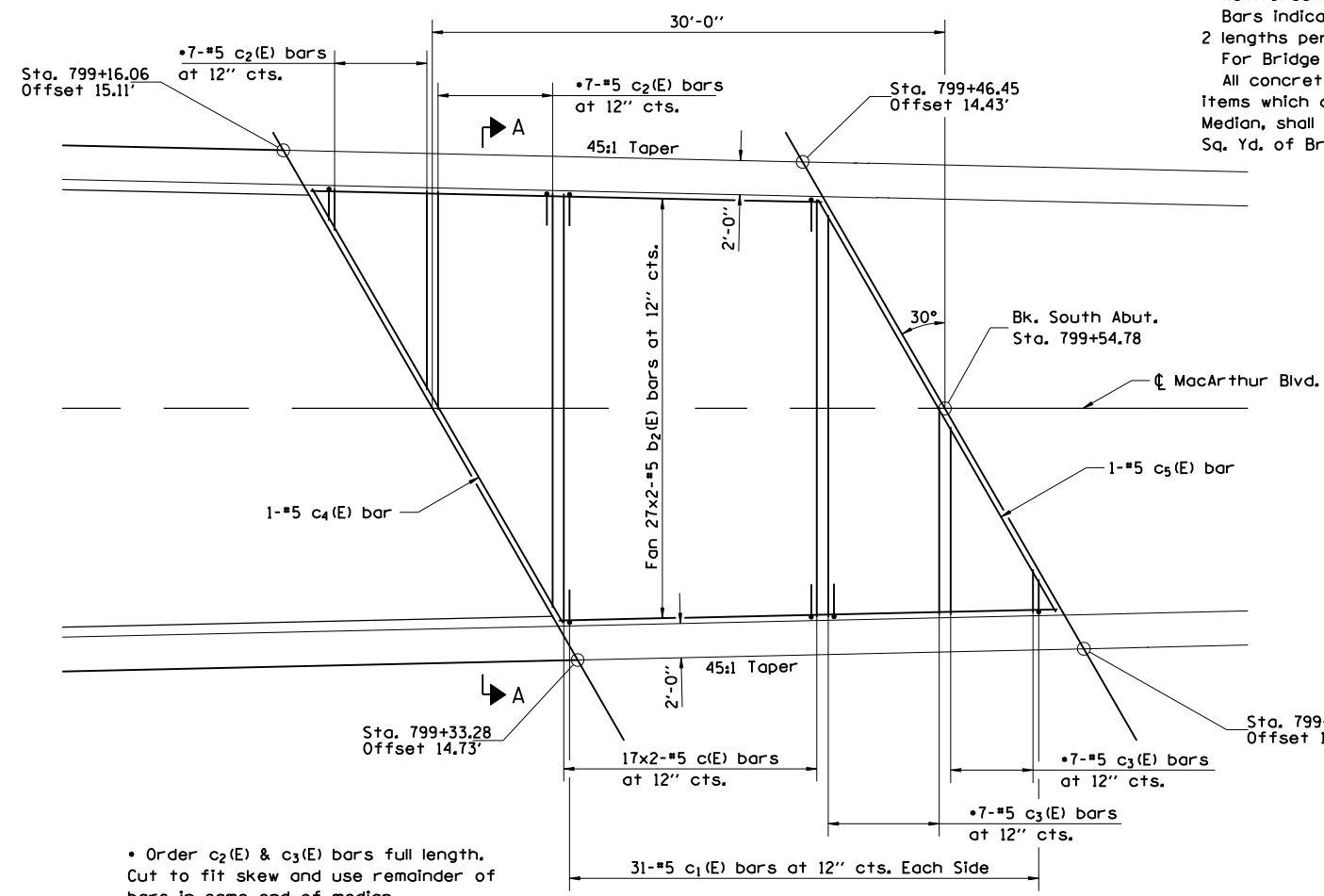


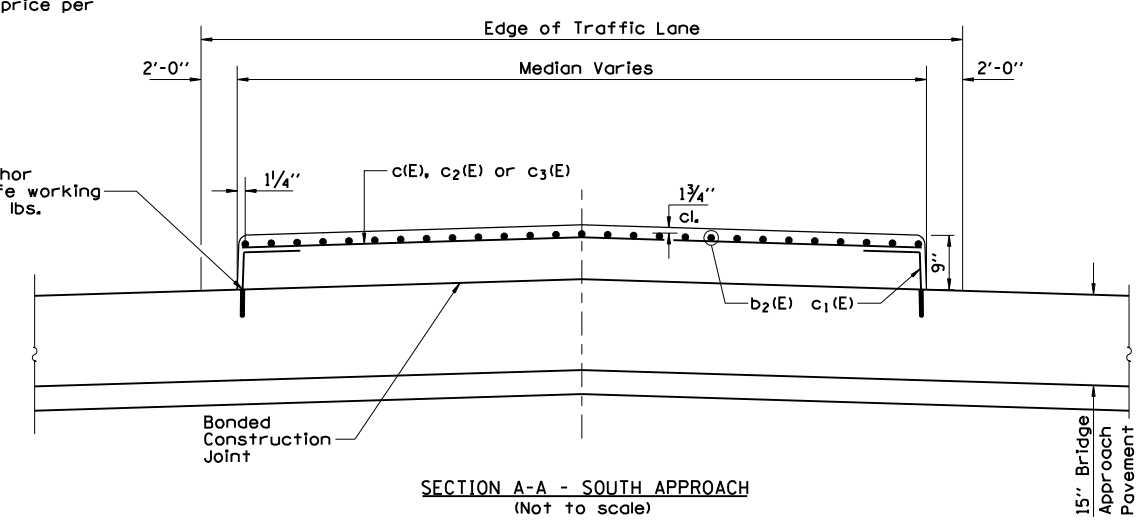
FAU ROUTE	SECTION	COUNTY	TOTAL SHEETS	SHEET NO.
8071	*	SANGAMON	559	199
STA.		TO STA.		
FED. ROAD DIST. NO.		ILLINOIS FED. AID PROJECT		
* 02-00382-02-PV				

Note:  
 Reinforcement bars designated (E) shall be Epoxy Coated.  
 Bars indicated 31x2-#5 etc. indicates 31 lines of bars with 2 lengths per line.  
 For Bridge Approach Pavement Details See Std. 420401.  
 All concrete, reinforcement, expansion anchors, and other items which are cast into the Bridge Approach Pavement Median, shall be included in the contract unit price per Sq. Yd. of Bridge Approach Pavement (Special).

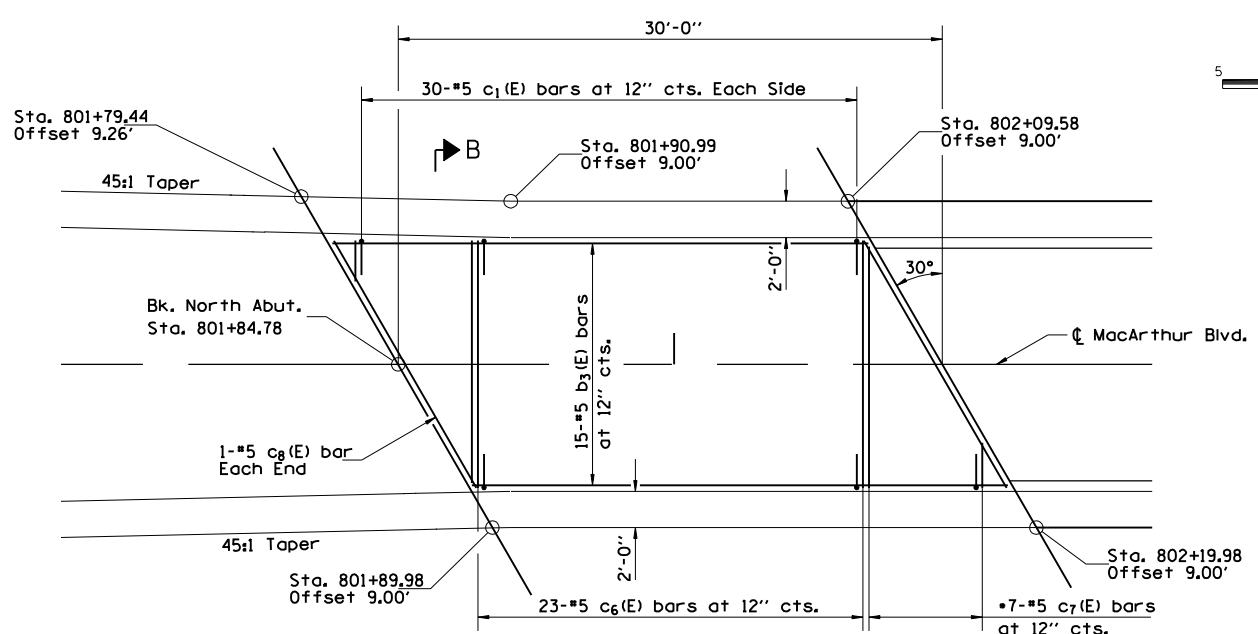


• Order c<sub>2</sub>(E) & c<sub>3</sub>(E) bars full length. Cut to fit skew and use remainder of bars in same end of median.

MEDIAN PLAN - SOUTH APPROACH  
 MACARTHUR BLVD. OVER N.S. R.R.

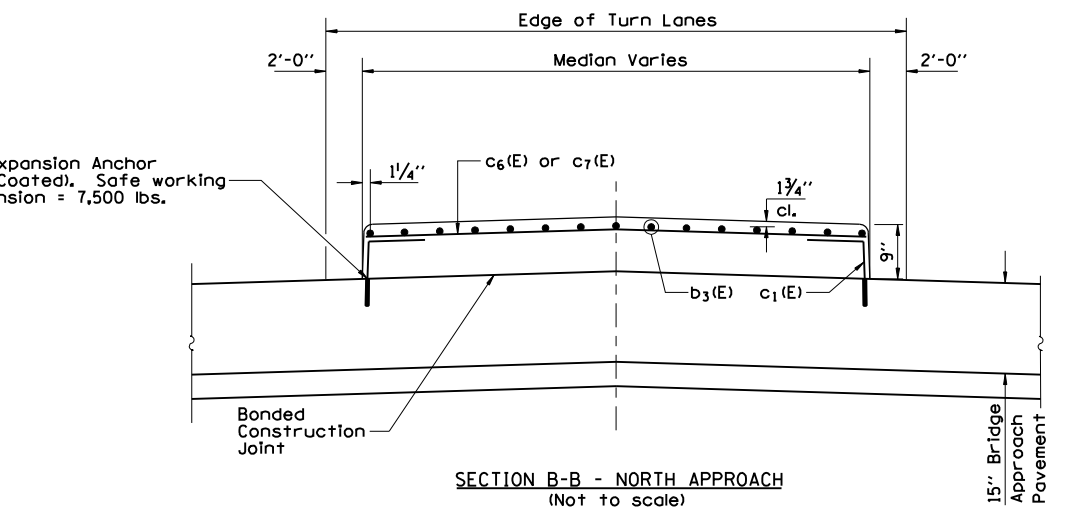


SECTION A-A - SOUTH APPROACH  
 (Not to scale)

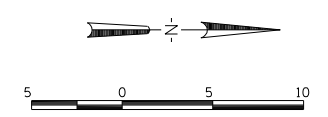


• Order c<sub>7</sub>(E) bars full length. Cut to fit skew and use remainder of bars in same end of median.

MEDIAN PLAN - NORTH APPROACH  
 MACARTHUR BLVD. OVER N.S. R.R.



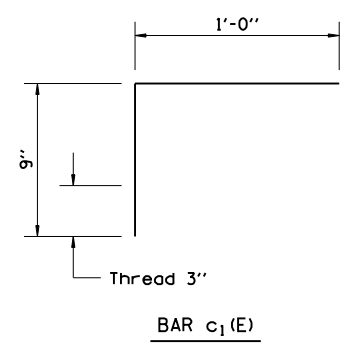
SECTION B-B - NORTH APPROACH  
 (Not to scale)



BILL OF MATERIAL

Bar	No.	Size	Length	Shape
b <sub>2</sub> (E)	54	#5	16'-3"	—
b <sub>3</sub> (E)	15	#5	29'-8"	—
c(E)	34	#5	13'-9"	—
c <sub>1</sub> (E)	122	#5	1'-9"	┌
c <sub>2</sub> (E)	7	#5	24'-3"	—
c <sub>3</sub> (E)	7	#5	24'-0"	—
c <sub>4</sub> (E)	1	#5	29'-3"	—
c <sub>5</sub> (E)	1	#5	27'-9"	—
c <sub>6</sub> (E)	23	#5	13'-6"	—
c <sub>7</sub> (E)	7	#5	13'-3"	—
c <sub>8</sub> (E)	2	#5	15'-8"	—

MIN. BAR LAPS  
 #5 bar 2'-2"



WORK ON THIS SHEET FOR INFORMATION ONLY NOT INCLUDED IN GRADING & STRUCTURES CONTRACT

REVISIONS	
NAME	DATE

ILLINOIS DEPARTMENT OF TRANSPORTATION  
 BRIDGE APPROACH PAVEMENT  
 MEDIAN DETAILS -2  
 FAI-72, MACARTHUR BLVD  
 SEC NO. 02-00382-02-PV  
 SANGAMON COUNTY, ILLINOIS  
 SCALE: VERT. 8" = 1'-0"  
 DATE: 12/16/2006  
 DRAWN BY: [Blank]  
 CHECKED BY: [Blank]



12/16/2006  
 \$FILES  
 LAYOUT: CLG 08/05/06  
 DRAWN: CLG 08/05/06  
 REVIEWED: JMD/JMD 08/05/06