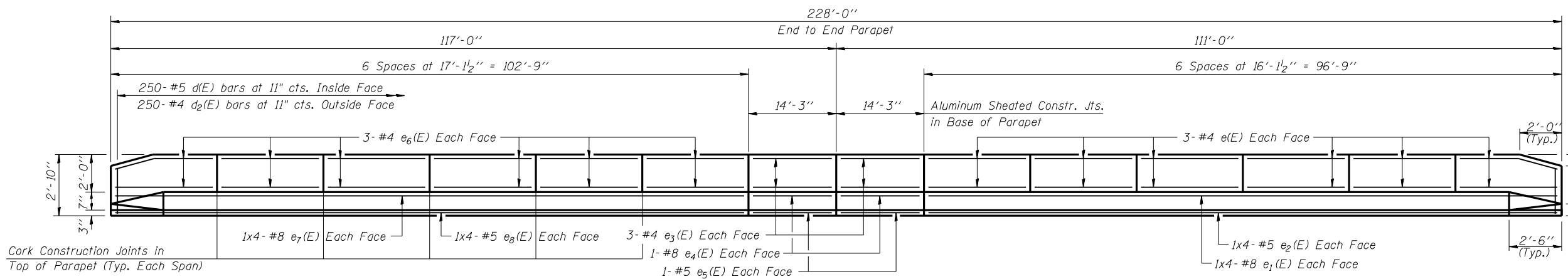


INSIDE ELEVATION OF WEST PARAPET

Note: Bar indicated thus 1x4-#5 etc. indicates 1 line of bars with 4 lengths per line.



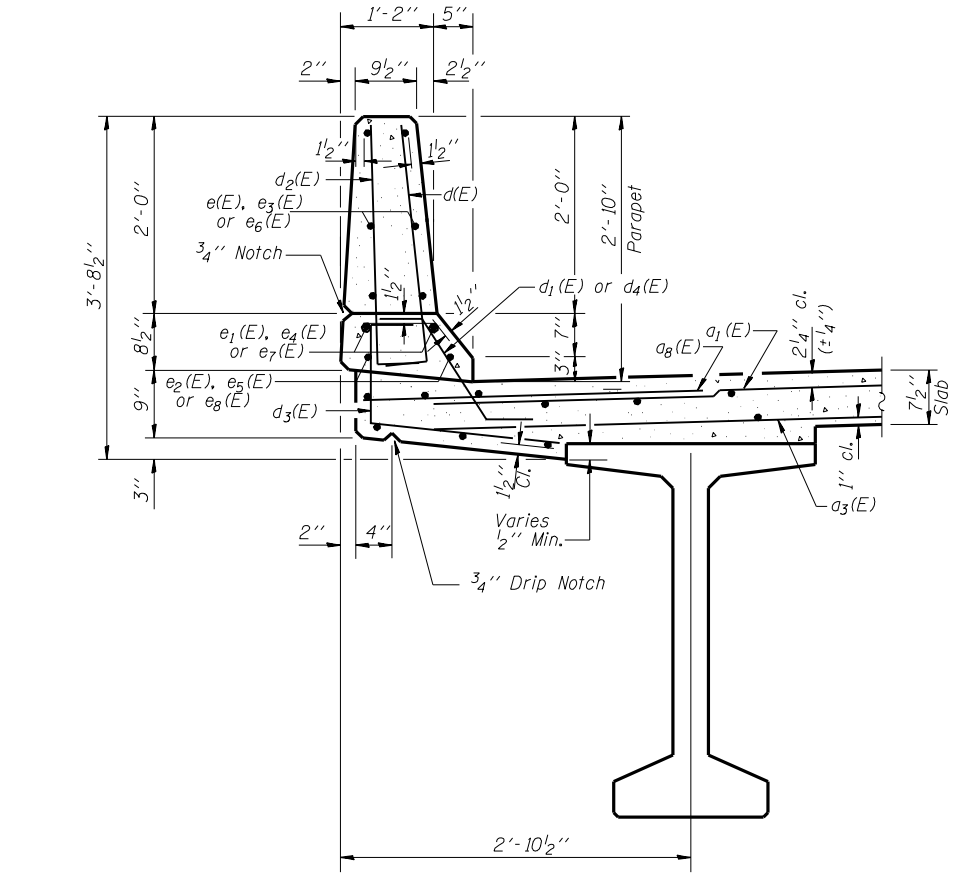
INSIDE ELEVATION OF EAST PARAPET

Bar	No.	Size	Length	Shape
a(E)	299	#5	24'-3"	—
a1(E)	598	#5	31'-0"	—
a2(E)	269	#5	27'-6"	—
a3(E)	538	#5	27'-9"	—
a4(E)	12	#5	53'-1"	—
a5(E)	299	#5	26'-3"	—
a6(E)	269	#5	29'-6"	—
a7(E)	13	#5	55'-1"	—
a8(E)	306	#6	4'-6"	—
a9(E)	16	#5	28'-9"	—
b(E)	798	#5	34'-6"	—
b1(E)	106	#8	47'-0"	—
b2(E)	318	#8	25'-6"	—
b3(E)	736	#5	30'-6"	—
b4(E)	5	#5	26'-6"	—
b5(E)	20	#5	31'-9"	—
b6(E)	81	#5	36'-0"	—
c(E)	49	#5	7'-7"	—
c1(E)	458	#5	1'-9"	┌
c2(E)	62	#5	6'-3"	—
c3(E)	62	#5	7'-6"	—
c4(E)	62	#5	8'-6"	—
c5(E)	62	#5	9'-9"	—
c6(E)	112	#5	11'-0"	—
d(E)	500	#5	3'-0"	—
d1(E)	488	#5	2'-5"	└
d2(E)	500	#4	3'-0"	—
d3(E)	500	#4	2'-4"	└
d4(E)	12	#5	2'-2"	└
e(E)	72	#4	15'-10"	—
e1(E)	16	#8	27'-6"	—
e2(E)	16	#5	25'-9"	—
e3(E)	24	#4	13'-11"	—
e4(E)	8	#8	13'-11"	—
e5(E)	8	#5	13'-11"	—
e6(E)	72	#4	16'-10"	—
e7(E)	16	#8	29'-0"	—
e8(E)	16	#5	27'-3"	—
m(E)	12	#6	37'-9"	—
m1(E)	24	#6	38'-3"	—
m2(E)	108	#6	9'-3"	—
m3(E)	64	#6	3'-7"	—
m4(E)	4	#6	1'-5"	—
m5(E)	102	#4	5'-3"	—
m6(E)	18	#8	6'-2"	—
m7(E)	4	#6	5'-7"	—
s(E)	216	#5	5'-6"	└
s1(E)	148	#4	14'-8"	└
s2(E)	68	#4	14'-0"	└
v(E)	216	#5	2'-9"	┌
Concrete Superstructure		Cu. Yds.		952.5
Reinforcement Bars (Epoxy Coated)		Lbs.		184760

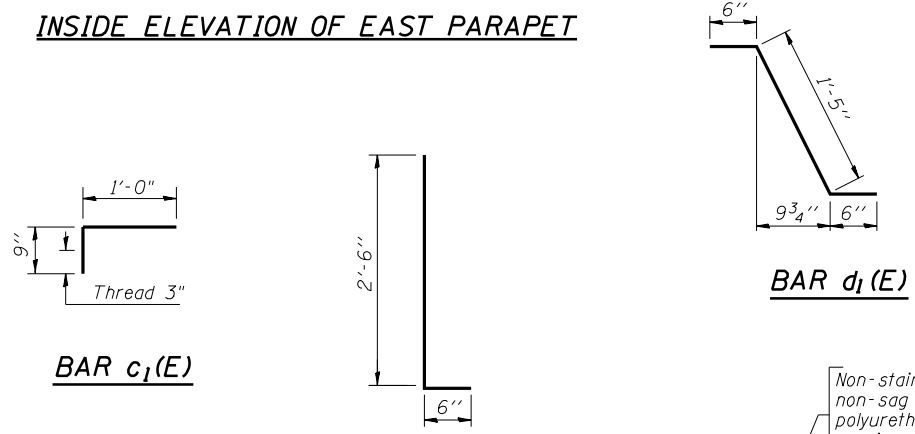
MIN. BAR LAPS

- #4 Bar - 1'-8"
- #5 Bar - 2'-2"
- #6 Bar - 2'-7"
- #8 Bar - 4'-6"

Reinforcement bars designated (E) shall be epoxy coated.

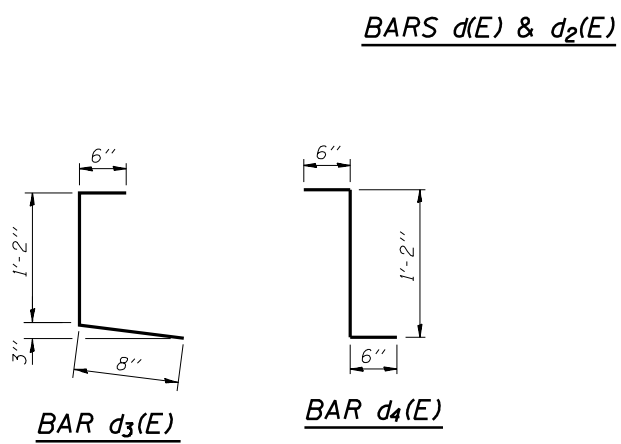


SECTION THRU PARAPET



BAR c1(E)

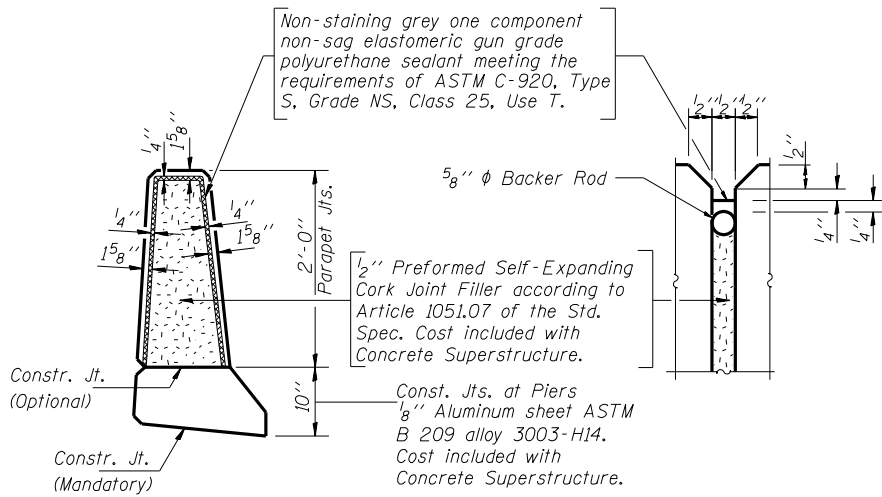
BAR d1(E)



BARS d(E) & d2(E)

BAR d3(E)

BAR d4(E)



PARAPET JOINT DETAILS

MMW 10/22/04
 DAP 01/04/05
 JMM 02/02/05
 s:FILE# 12/16/2006

Corporate License Number 184-001-084

SUPERSTRUCTURE DETAILS
 MACARTHUR BLVD. OVER F.A.I. 72
 SECTION (84-9-4)A, HBK, BY, BY-1
 SANGAMON COUNTY
 STATION 792+77.64
 STRUCTURE NUMBER 084-0513

© Copyright Hanson Professional Services Inc. \$MS_YEAR\$ JOB# 96S2002B
 DATE 02/02/05