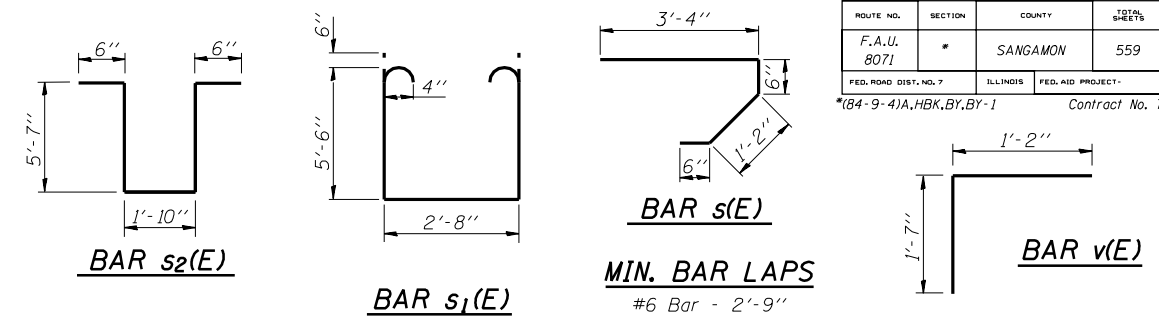
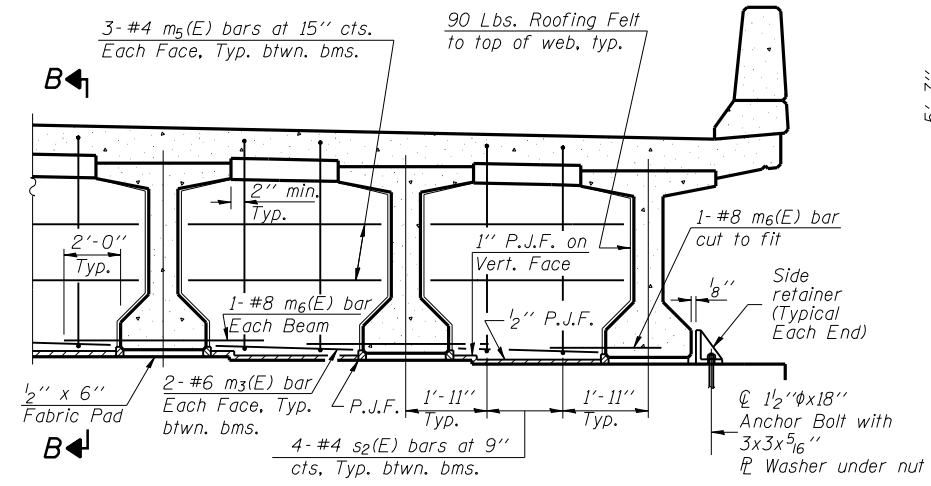
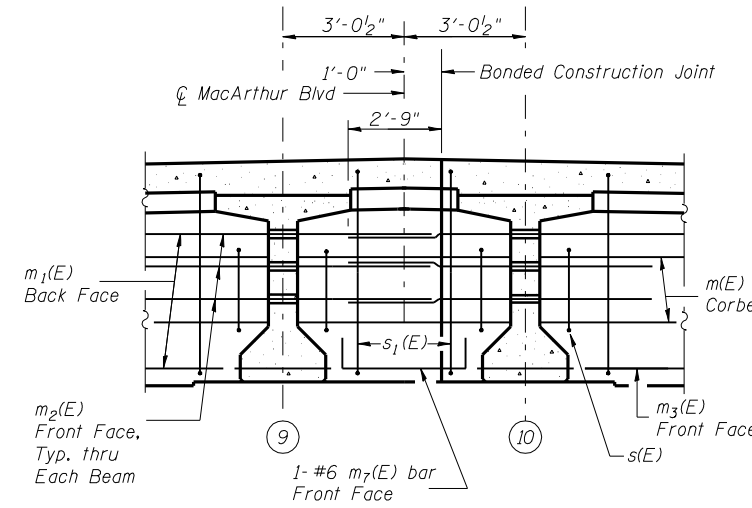


DIAPHRAGM AT PIER

Dimensions Perpendicular to Beams.
Looking Upstation at Pier

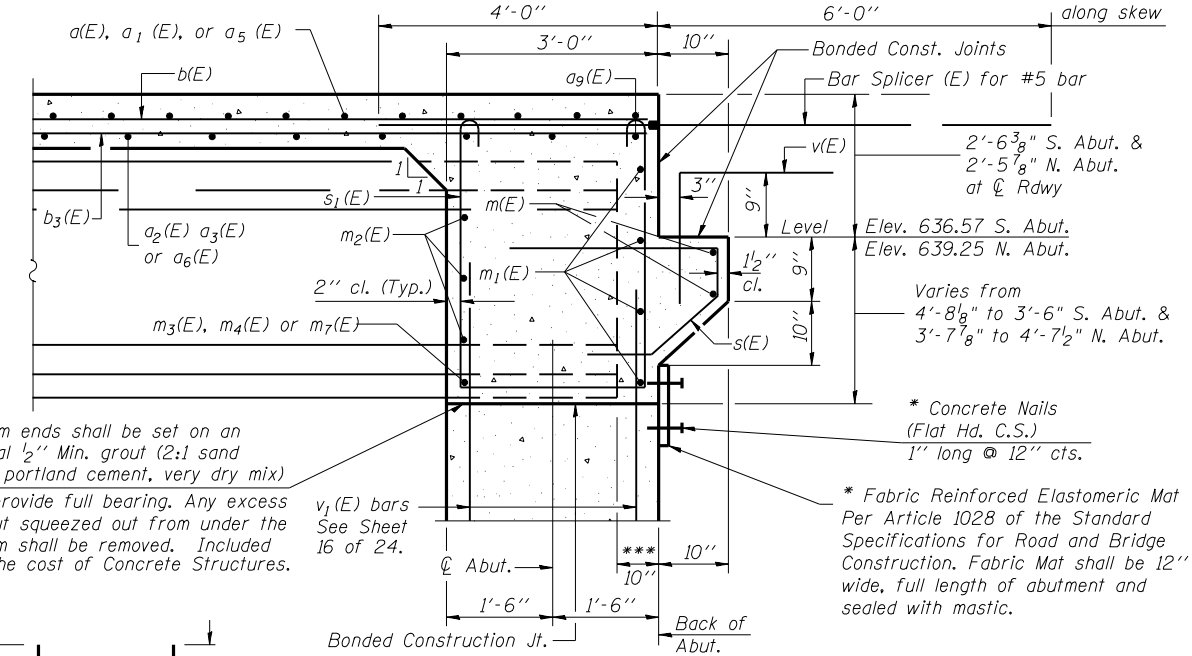
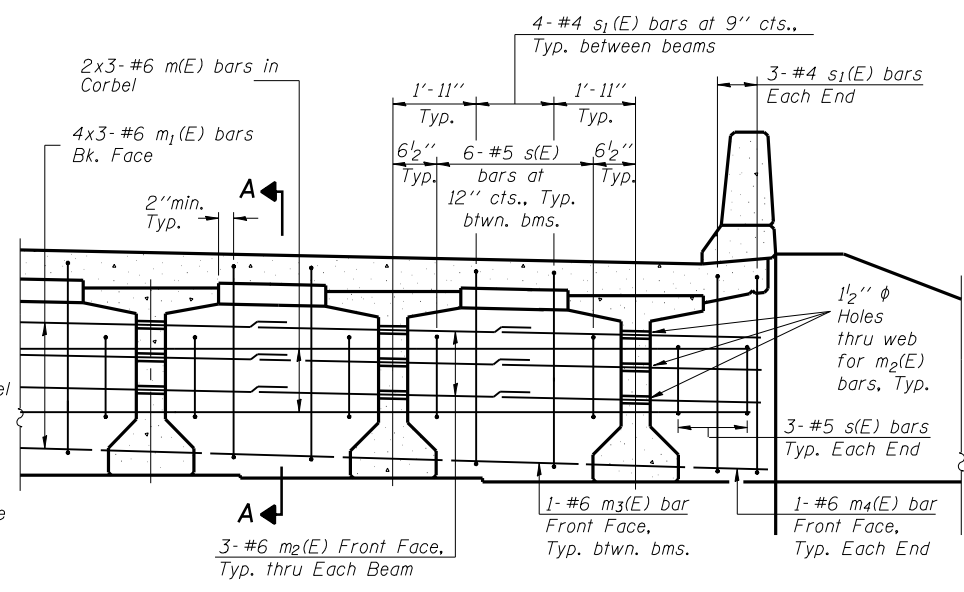


MIN. BAR LAPS
#6 Bar - 2'-9\"



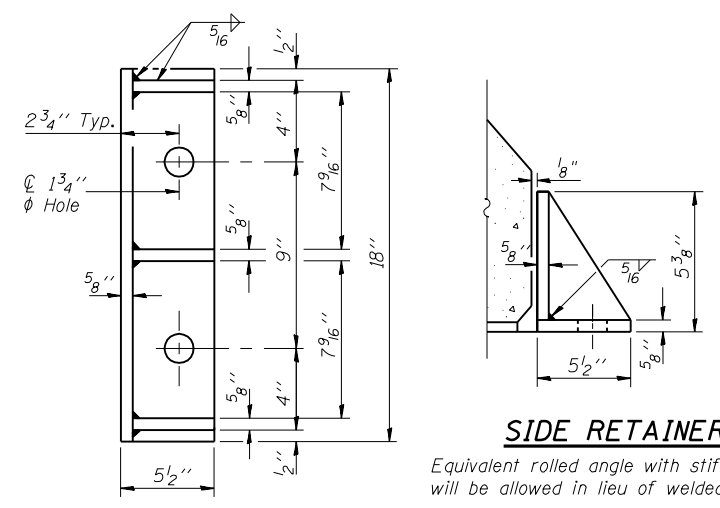
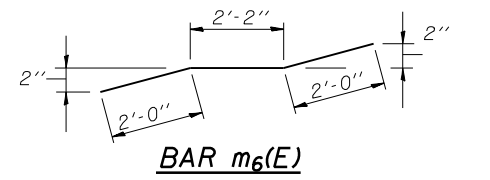
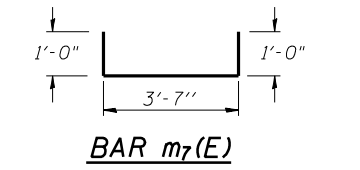
DIAPHRAGM AT ABUTMENT

Dimensions Perpendicular to Beams.
Looking Upstation at Abutment



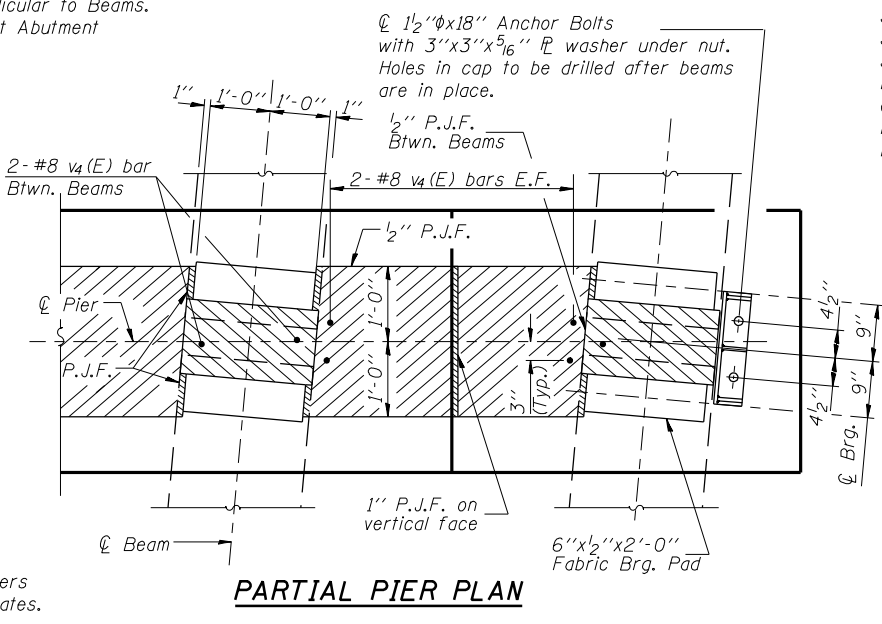
SECTION A-A

Dimensions at right angles to abutment, except as shown.
* Cost included with Concrete Structures.
*** Along \bar{C} Beam.



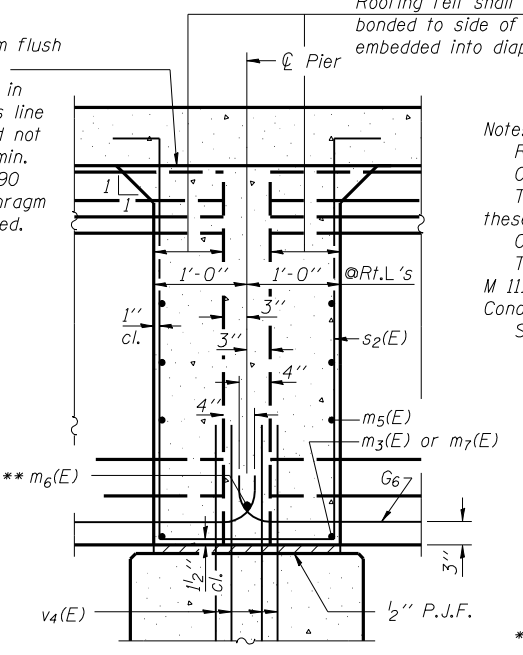
SIDE RETAINER

Equivalent rolled angle with stiffeners
will be allowed in lieu of welded plates.



PARTIAL PIER PLAN

Pour diaphragm flush with bott. of slab. Concrete in slab above this line shall be placed not less than 45 min. or more than 90 min. after diaphragm has been poured.



SECTION B-B

Dimensions along \bar{C} of beam, except as shown.

Note:

Reinforcement bars in diaphragm are billed with Superstructure on sheet 10 of 24. Concrete in diaphragm is included with Concrete Superstructure on sheet 10 of 24. The s(E), s1(E) and s2(E) bars shall be placed parallel to the beams. Spacing for these bars shall be at right angles to the beams. Cost of 90 lb. roofing felt is included with Concrete Superstructure. The side retainers shall be galvanized after shop fabrication according to AASHTO M 111 and ASTM A 385. Cost of side retainer and anchor bolts shall be included with Concrete Structures. See sheet 21 of 24 for anchor bolt details.

Corporate License Number 184-001-084

DIAPHRAGM DETAILS
MACARTHUR BLVD. OVER F.A.I. 72
SECTION (84-9-4)A, HBK, BY, BY-1
SANGAMON COUNTY
STATION 792+77.64
STRUCTURE NUMBER 084-0513

LAYOUT	MM	10/22/04
DRAWN	DAP	01/04/05
REVIEWED	JMM	02/02/05