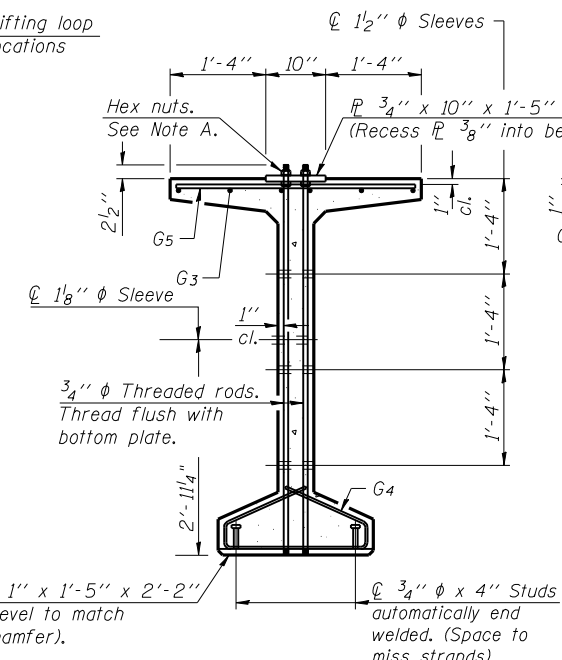


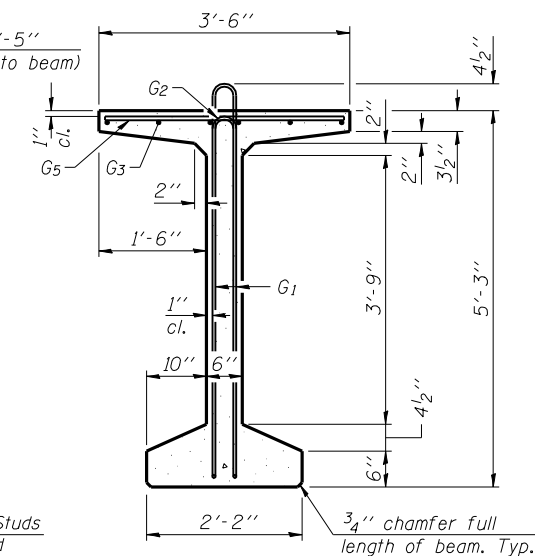
**ELEVATION OF BEAM**  
(Showing reinforcement & dimensions)

\* 4 spaces at 3/4" = 1'-1"  
\*\* 5-3/4" φ threaded dowel rods at 3/4" cts., each face.

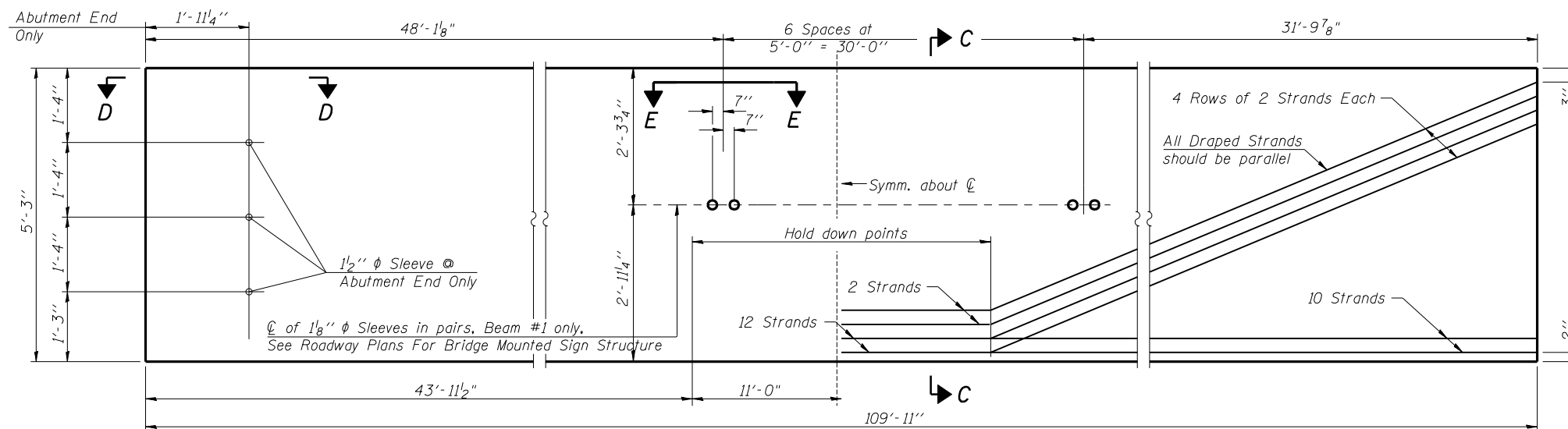
Note A:  
Hex nuts (top and bottom) with lock washers (top). Only tighten sufficiently to compress lock washers.



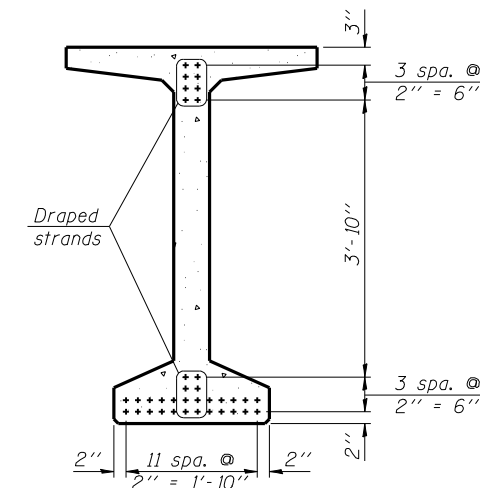
**SECTION A-A**



**SECTION B-B**



**ELEVATION OF BEAM**  
(Showing prestressing steel)



**SECTION C-C**

**BAR LIST  
ONE BEAM ONLY**

Bar	No.	Size	Length	Shape
G1	171	#4	11'-11"	⊏
G2	16	#4	6'-2"	⊏
G3	24	#6	29'-6"	⊏
G4	56	#3	4'-11"	⊏
G5	147	#5	3'-4"	⊏
G6	3	#8	3'-9"	⊏

Notes:  
See sheet 15 of 24 for additional details and Bill of Material.  
Required release strength, f'ci, shall be 5000 psi.

Corporate License Number 184-001-084

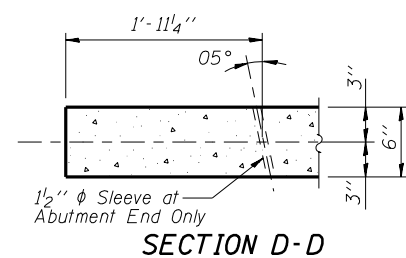
**63" PPC BULB T-BEAM - SPAN 1  
MACARTHUR BLVD. OVER F.A.I. 72  
SECTION (84-9-4)A, HBK, BY, BY-1  
SANGAMON COUNTY  
STATION 792+77.64  
STRUCTURE NUMBER 084-0513**

© Copyright Hanson Professional Services Inc. \$MS\_YEARS

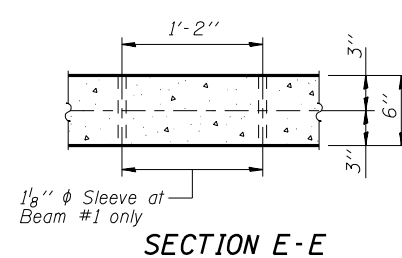


JOB#  
96S2002B  
DATE  
10/10/06

MMW 10/10/06  
DAP 10/10/06  
JMM 10/12/06  
LAYOUT  
DRAWN  
REVIEWED



**SECTION D-D**



**SECTION E-E**