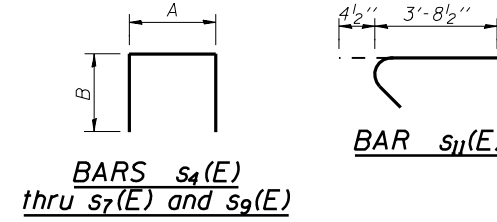
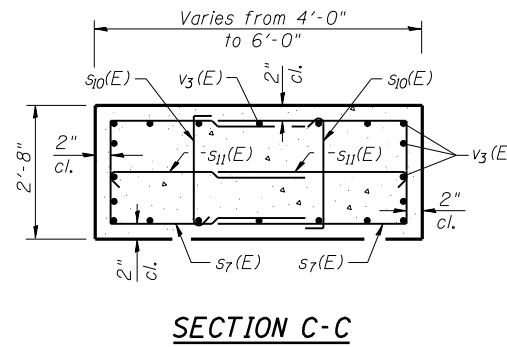
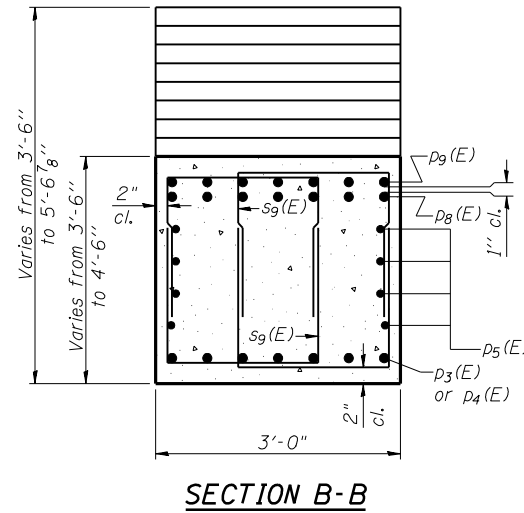
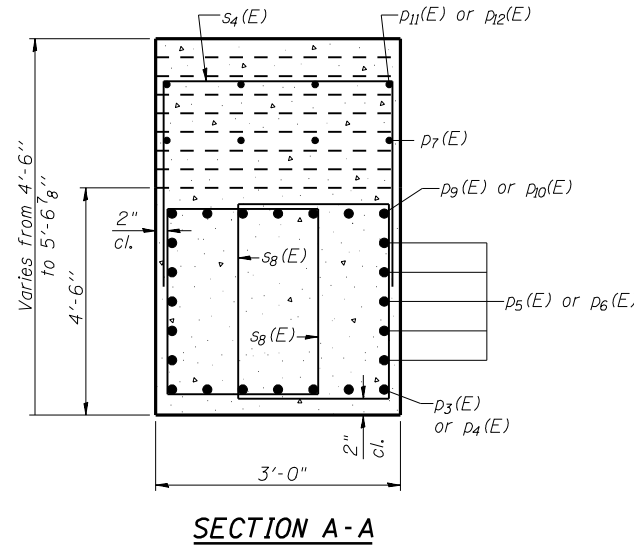
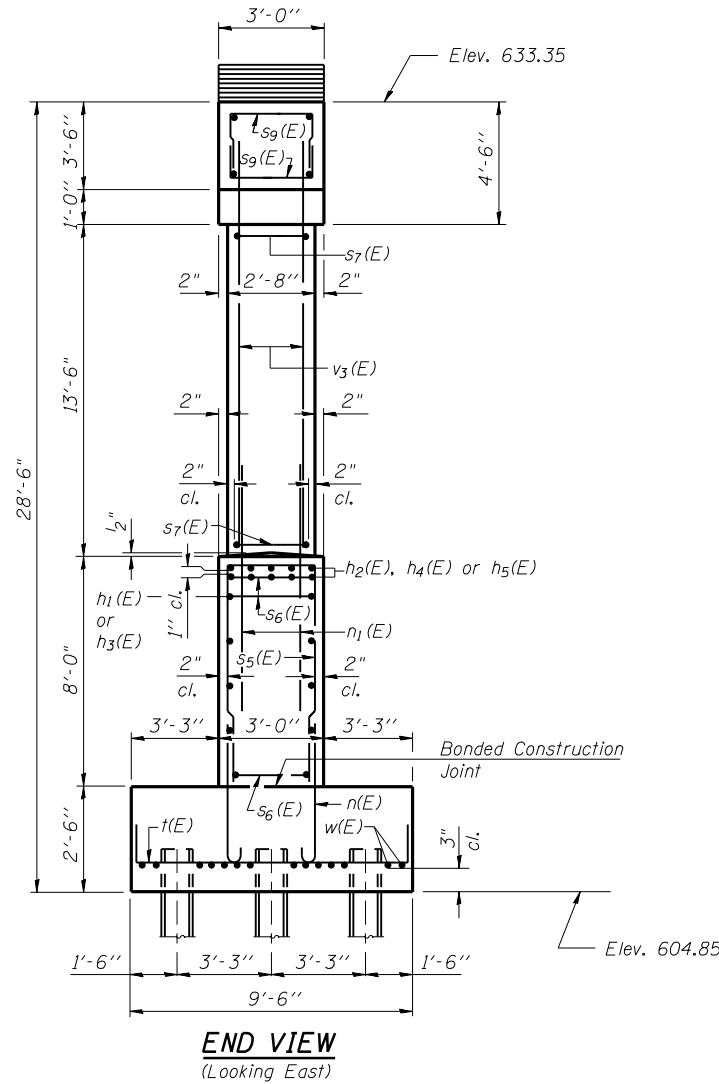


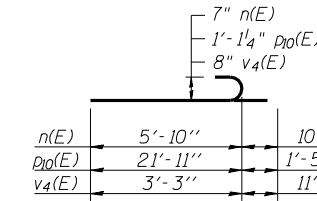
PILE DATA

Pile Type: HP 10x57
 Nominal Required Bearing: 454 kips
 Allowable Resistance Available: 151 kips
 Estimated Length: 40'
 No. Required: 42 (Includes 1 Test Pile)
 Test Piles: 1

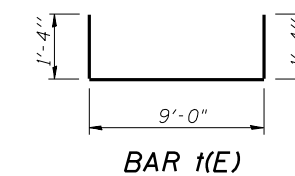
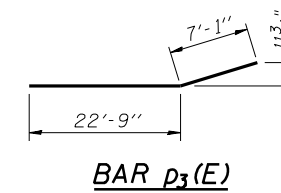
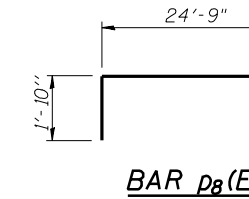
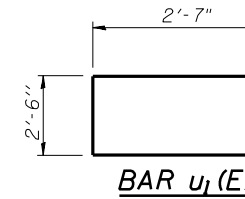
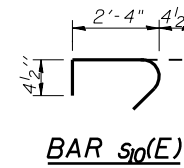
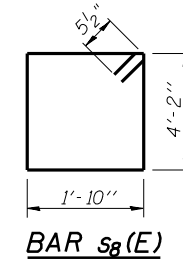


A & B DIMENSIONS

Bar	A	B
s4(E)	2'-8"	3'-0"
s5(E)	2'-8"	7'-8"
s6(E)	2'-6"	2'-2"
s7(E)	2'-4"	3'-8"
s9(E)	2'-6"	3'-2"



BARS n(E), p10(E) & v4(E)



BILL OF MATERIAL

Bar	No.	Size	Length	Shape
h1(E)	32	#6	25'-6"	
h2(E)	20	#9	28'-9"	
h3(E)	32	#6	25'-0"	
h4(E)	10	#9	28'-3"	
h5(E)	10	#9	25'-0"	
n(E)	252	#7	6'-8"	
n1(E)	120	#10	12'-6"	
p3(E)	14	#8	29'-10"	
p4(E)	14	#8	29'-6"	
p5(E)	20	#5	37'-6"	
p6(E)	20	#5	19'-6"	
p7(E)	16	#6	20'-0"	
p8(E)	14	#10	26'-7"	
p9(E)	14	#10	40'-0"	
p10(E)	14	#10	23'-4"	
p11(E)	4	#6	18'-10"	
p12(E)	4	#6	16'-10"	
s4(E)	76	#5	8'-8"	
s5(E)	126	#7	18'-0"	
s6(E)	18	#5	6'-10"	
s7(E)	168	#4	9'-8"	
s8(E)	376	#5	12'-11"	
s9(E)	60	#5	8'-10"	
s10(E)	168	#4	3'-1"	
s11(E)	168	#4	4'-1"	
t(E)	136	#8	11'-8"	
u1(E)	10	#6	7'-8"	
v3(E)	120	#10	17'-10"	
v4(E)	102	#8	4'-2"	
w(E)	56	#7	26'-3"	
Structure Excavation		Cu. Yd.	143	
Concrete Structures		Cu. Yd.	266.5	
Reinforcement Bars, Epoxy Coated		Pound	56720	
Furnishing Steel Piles HP10x57		Ft.	1640	
Driving Piles		Ft.	1640	
Test Pile Steel HP10x57		Each	1	

Reinforcement Bars designated (E) shall be epoxy coated.

MIN. BAR LAPS

- #4 - 1'-8" #7 - 3'-5"
- #5 - 2'-2" #8 - 4'-6"
- #6 - 2'-7" #10 - 7'-3"

Corporate License Number 184-001-084

PIER DETAILS
 MACARTHUR BLVD. OVER F.A.I. 72
 SECTION (84-9-4)A, HBK, BY, BY-1
 SANGAMON COUNTY
 STATION 792+77.64
 STRUCTURE NUMBER 084-0513

© Copyright Hanson Professional Services Inc. \$MS_YEAR\$



JOB# 96S2002B

DATE 02/02/05

MM 10/22/04
 DAP 01/04/05
 JMM 02/02/05
 LAYOUT
 DRAWN
 REVIEWED