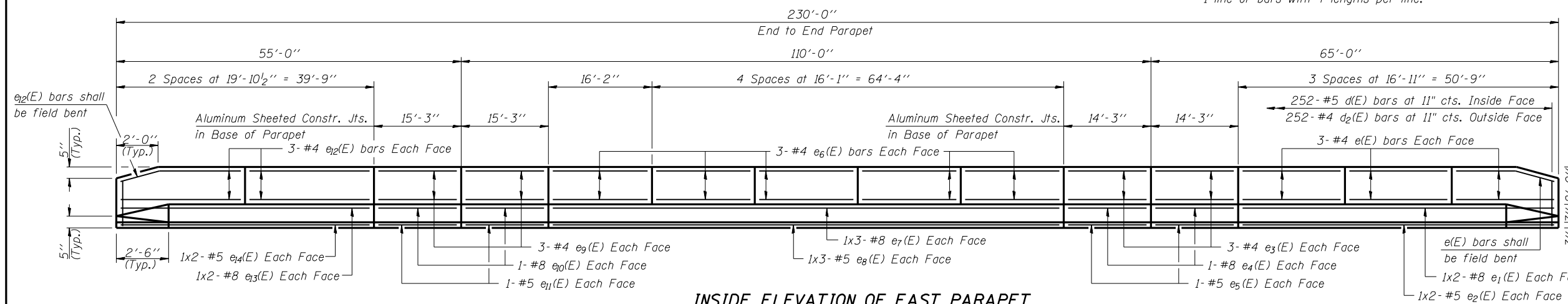


INSIDE ELEVATION OF WEST PARAPET

Note: Bar indicated thus 1x4-#5 etc. indicates 1 line of bars with 4 lengths per line.

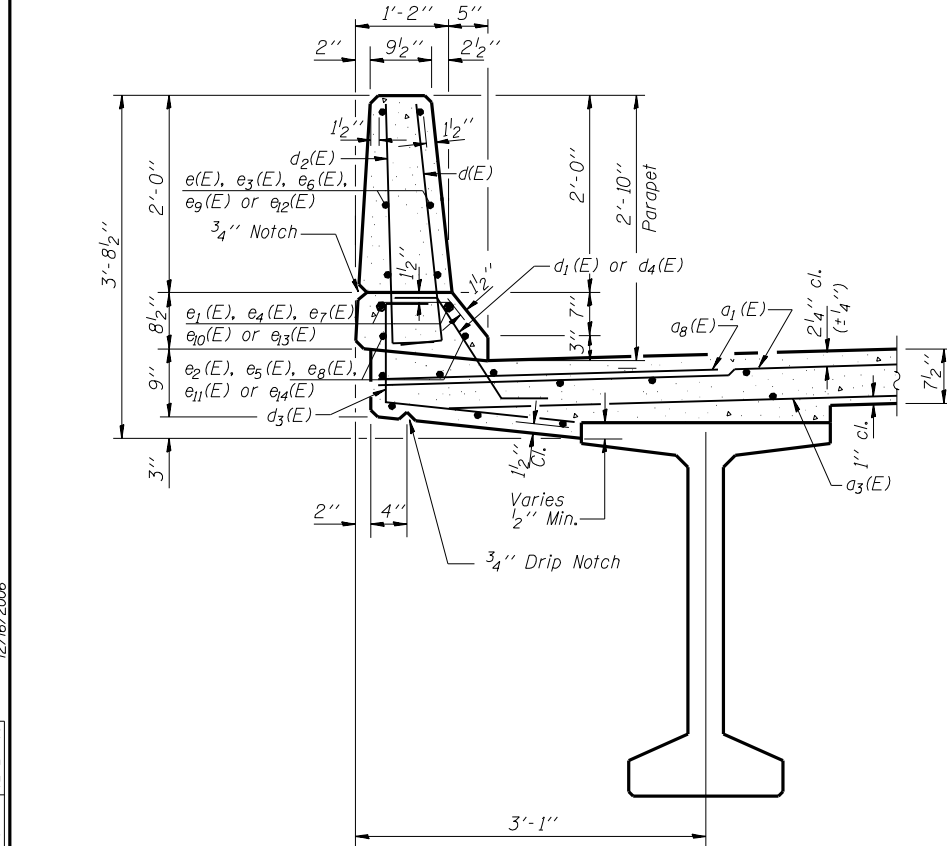


INSIDE ELEVATION OF EAST PARAPET

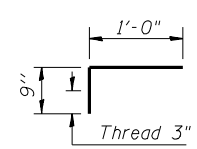
MIN. BAR LAPS

- #4 Bar - 1'-8"
- #5 Bar - 2'-2"
- #6 Bar - 2'-7"
- #8 Bar - 4'-6"

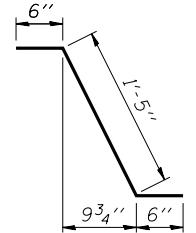
Reinforcement bars designated (E) shall be epoxy coated.



SECTION THRU PARAPET

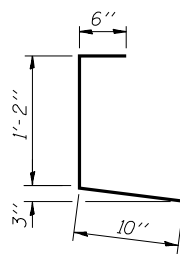


BAR c1(E)

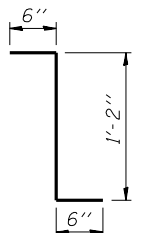


BAR d1(E)

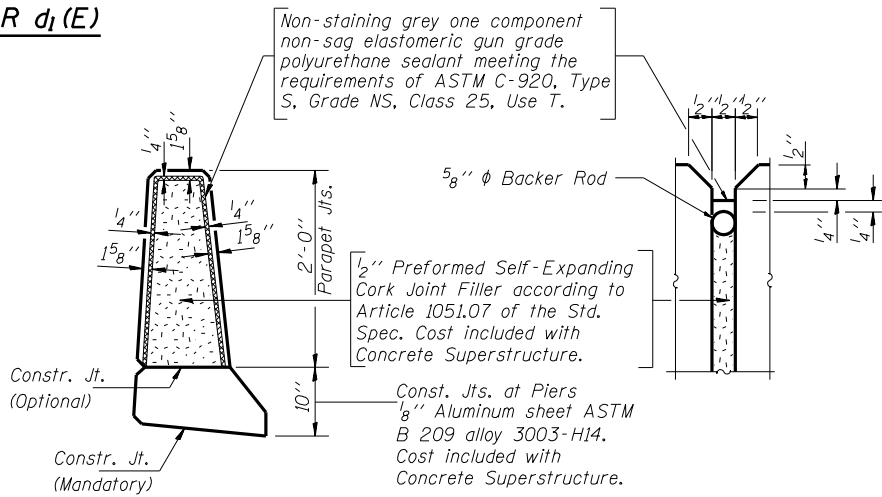
BARS d(E) & d2(E)



BAR d3(E)



BAR d4(E)



PARAPET JOINT DETAILS

Bar	No.	Size	Length	Shape
a(E)	360	#5	19'-9"	—
a1(E)	717	#5	32'-9"	—
a2(E)	269	#5	23'-0"	—
a3(E)	535	#5	29'-0"	—
a4(E)	28	#5	35'-0"	—
a5(E)	356	#5	27'-3"	—
a6(E)	274	#5	30'-3"	—
a7(E)	8	#5	22'-0"	—
a8(E)	370	#6	4'-6"	—
a9(E)	8	#5	34'-6"	—
a10(E)	11	#5	29'-6"	—
a11(E)	18	#5	31'-9"	—
a12(E)	7	#5	25'-3"	—
b(E)	798	#5	34'-9"	—
b1(E)	220	#7	46'-0"	—
b2(E)	704	#5	30'-9"	—
b3(E)	208	#5	30'-9"	—
c(E)	108	#5	13'-0"	—
c1(E)	458	#5	1'-9"	┌
c2(E)	108	#5	12'-0"	—
c3(E)	110	#5	10'-9"	—
c4(E)	110	#5	9'-6"	—
c5(E)	4	#5	13'-4"	—
c6(E)	7	#5	23'-2"	—
c7(E)	1	#5	27'-10"	—
c8(E)	1	#5	16'-1"	—
d(E)	504	#5	3'-0"	└
d1(E)	492	#5	2'-5"	└
d2(E)	504	#4	3'-0"	└
d3(E)	504	#4	2'-6"	└
d4(E)	12	#5	2'-2"	└
e(E)	36	#4	16'-7"	—
e1(E)	8	#8	27'-6"	—
e2(E)	8	#5	26'-6"	—
e3(E)	24	#4	13'-11"	—
e4(E)	8	#8	13'-11"	—
e5(E)	8	#5	13'-11"	—
e6(E)	60	#4	15'-9"	—
e7(E)	12	#8	29'-9"	—
e8(E)	12	#5	28'-3"	—
e9(E)	24	#4	14'-11"	—
e10(E)	8	#8	14'-11"	—
e11(E)	8	#5	14'-11"	—
e12(E)	24	#4	19'-6"	—
e13(E)	8	#8	22'-0"	—
e14(E)	8	#5	21'-0"	—
m(E)	20	#6	27'-0"	—
m1(E)	40	#6	27'-3"	—
m2(E)	102	#6	10'-3"	—
m3(E)	96	#6	4'-6"	—
m4(E)	4	#6	2'-0"	—
m5(E)	192	#4	6'-5"	—
m6(E)	34	#8	6'-2"	—
s(E)	236	#5	5'-6"	—
s1(E)	140	#4	15'-1"	—
s2(E)	128	#4	14'-7"	—
v(E)	216	#5	2'-9"	└
Concrete Superstructure			Cu. Yds.	1073.0
Reinforcement Bars (Epoxy Coated)			Lbs.	184330

SUPERSTRUCTURE DETAILS
MACARTHUR BLVD. OVER N.S. R.R.
SECTION 02-00382-02-PV
SANGAMON COUNTY
STATION 800+69.78
STRUCTURE NUMBER 084-0512

MM 06/27/03
 DAP 01/04/05
 JMM 02/24/05
 12/16/2006