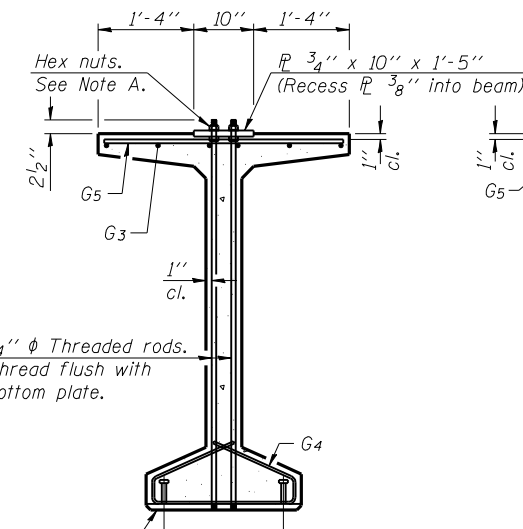


ELEVATION OF BEAM
(Showing reinforcement & dimensions)

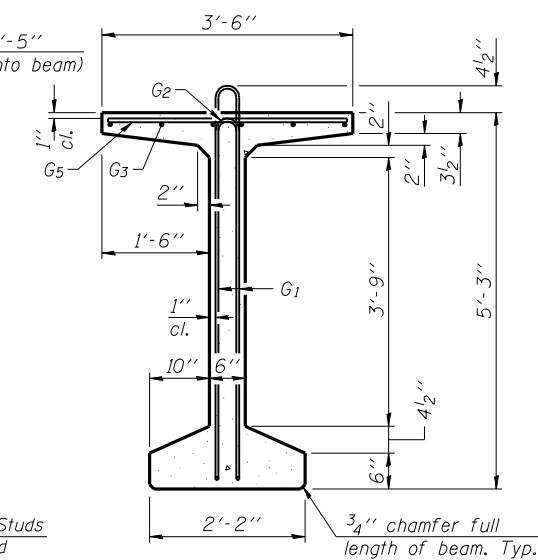
* 4 spaces at 3 1/4" = 1'-1"
** 5-3/4" φ threaded dowel rods at 3 1/4" cts., each face.

Note A:
Hex nuts (top and bottom) with lock washers (top). Only tighten sufficiently to compress lock washers.

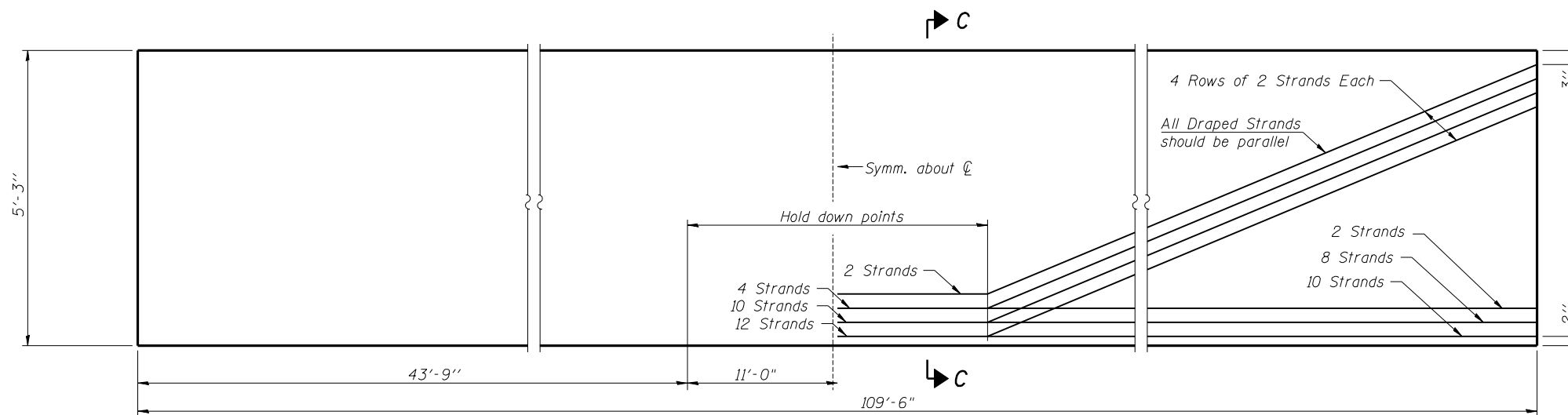
3- #8 G6 bars at pier only. (See sheet 16 of 27 for details.)
R 1" x 1'-5" x 2'-2" (Bevel to match chamfer).
3/4" φ Threaded rods. Thread flush with bottom plate.
3/4" φ Studs automatically end welded. (Space to miss strands).



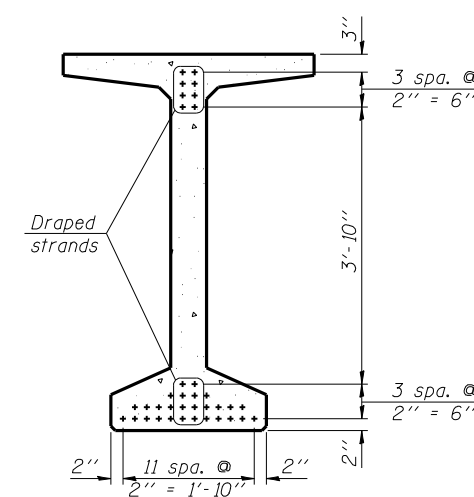
SECTION A-A



SECTION B-B



ELEVATION OF BEAM
(Showing prestressing steel)



SECTION C-C

**BAR LIST
ONE BEAM ONLY**

Bar	No.	Size	Length	Shape
G1	159	#4	11'-11"	⌈
G2	16	#4	6'-2"	⌈
G3	24	#6	29'-3"	⌈
G4	56	#3	4'-11"	⌈
G5	147	#5	3'-4"	⌈
G6	6	#8	3'-9"	⌈

Notes:
See sheet 16 of 27 for additional details and Bill of Material.
Required release strength, f'ci, shall be 5000 psi.

Corporate License Number 184-001-084

63" PPC BULB T-BEAM - SPAN #2
MACARTHUR BLVD. OVER N.S. R.R.
SECTION 02-00382-02-PV
SANGAMON COUNTY
STATION 800+69.78
STRUCTURE NUMBER 084-0512

© Copyright Hanson Professional Services Inc. \$MS_YEARS



JOB#

96S2002B

DATE

10/10/06

LAYOUT	MM	10/10/06
DRAWN	DAP	10/10/06
REVIEWED	JMM	10/12/06

\$FILE\$
12/16/2006