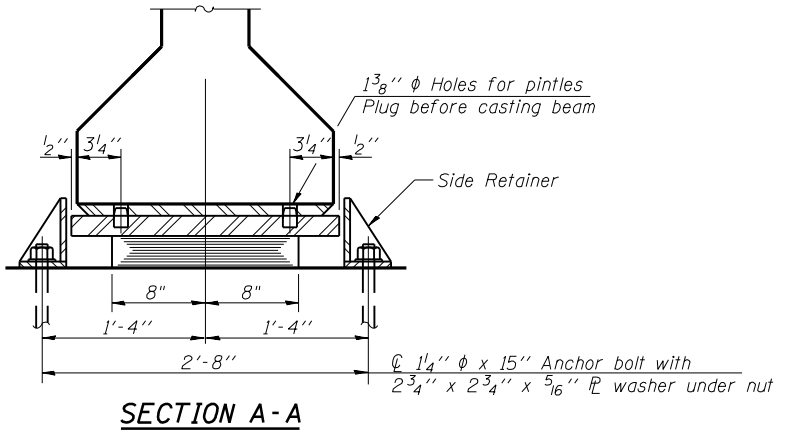


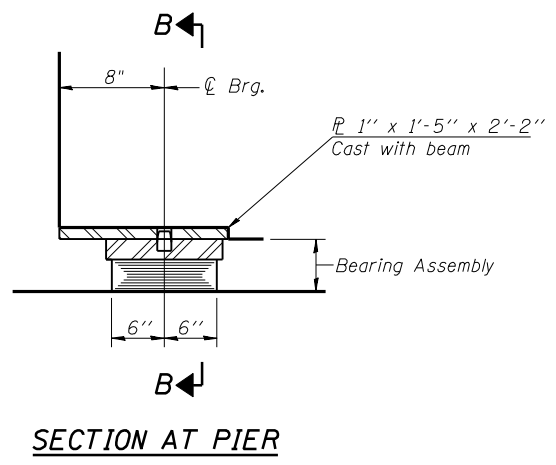
SECTION AT PIER

TYPE I ELASTOMERIC EXP. BRG.
(Span 1-Pier 1 & Span 3-Pier 2)



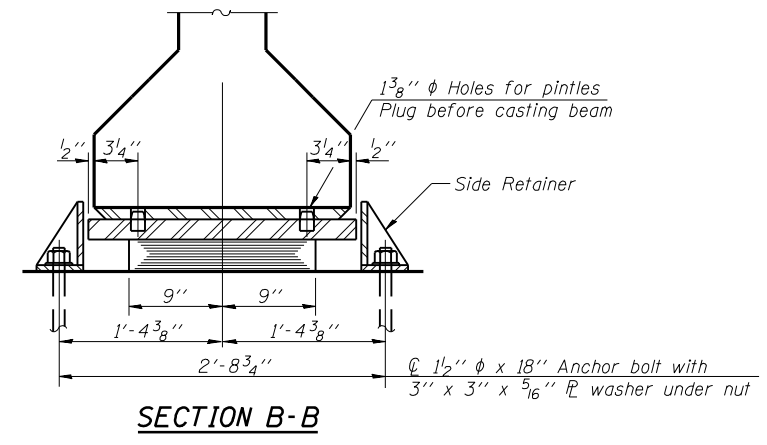
SECTION A-A

Notes:
After beams have been erected holes at expansion bearings shall be drilled and anchor bolts grouted in place.
See sheet 23 of 27 for anchor bolt installation.
See sheet 16 of 27 for additional details of plate cast with beam.

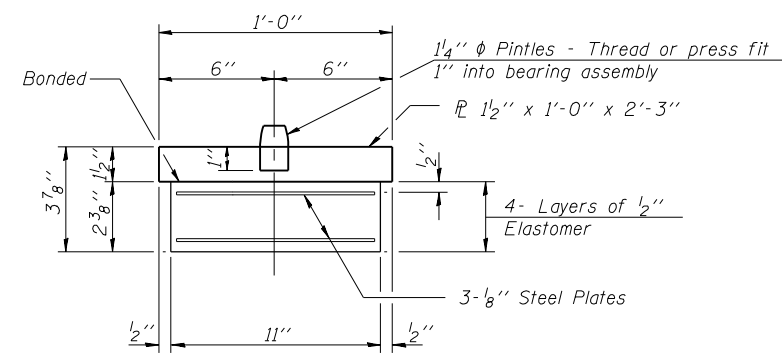


SECTION AT PIER

TYPE I ELASTOMERIC EXP. BRG.
(Span 2-Pier 1 & 2)

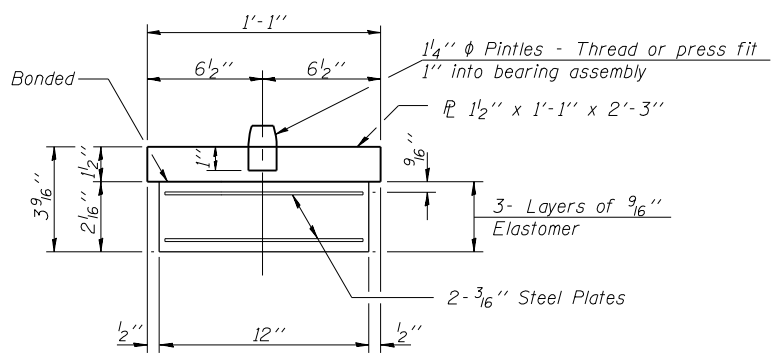


SECTION B-B



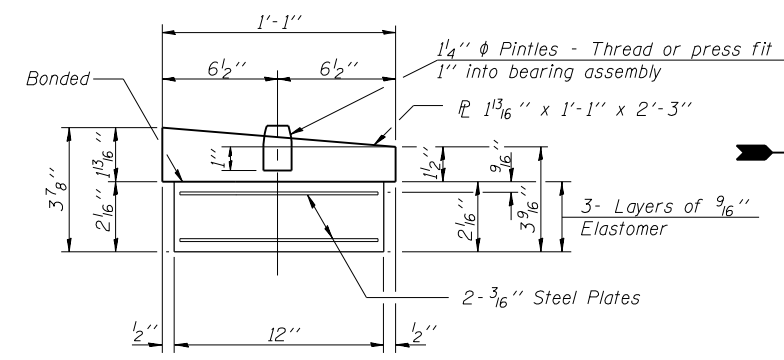
BEARING ASSEMBLY
(Span 1- Pier 1 & Span 3- Pier 2)

Note: Shim plates shall not be placed under Bearing Assembly.



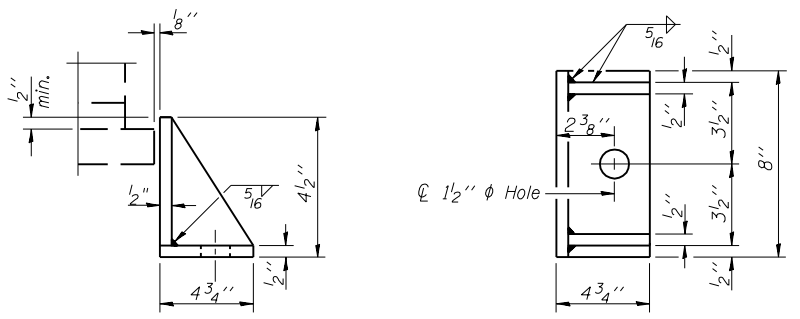
BEARING ASSEMBLY
(Span 2- Pier 1)

Note: Shim plates shall not be placed under Bearing Assembly.



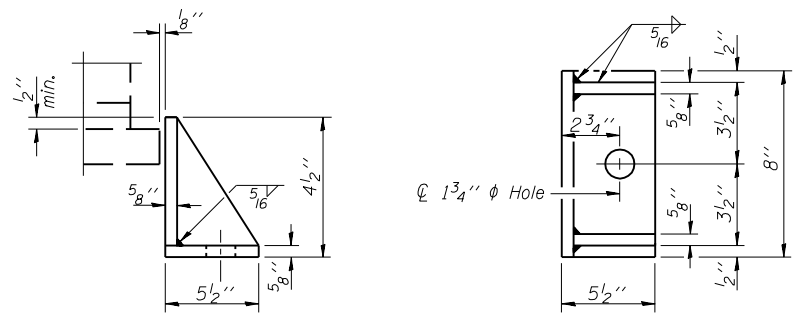
BEARING ASSEMBLY
(Span 2- Pier 2)

Note: Shim plates shall not be placed under Bearing Assembly. Bearing shall be placed using the correct orientation shown above.



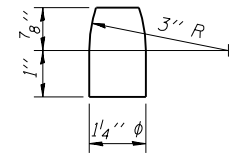
SIDE RETAINER
(Span 1- Pier 1 & Span 3- Pier 2)

Equivalent rolled angle with stiffeners will be allowed in lieu of welded plates. Weight included with Structural Steel.



SIDE RETAINER
(Span 2- Pier 1 & 2)

Equivalent rolled angle with stiffeners will be allowed in lieu of welded plates. Weight included with Structural Steel.



PINTLE

BILL OF MATERIAL

Item	Unit	Total
Elastomeric Bearing Assembly Type I	Each	68

Corporate License Number 184-001-084

ELASTOMERIC BEARING ASSEMBLY, TYPE I
MACARTHUR BLVD. OVER N.S. R.R.
SECTION 02-00382-02-PV
SANGAMON COUNTY
STATION 800+69.78
STRUCTURE NUMBER 084-0512

© Copyright Hanson Professional Services Inc. \$MS_YEAR\$



JOB# 96S2002B

DATE: 10/30/05

LAYOUT	MMW	06/27/03
DRAWN	DAP	01/04/05
REVIEWED	JMM	02/24/05

\$FILES\$
12/16/2006