

### STEP HEIGHT DIMENSIONS

Description	Pier 1	Pier 2
a	1"	1 7/8"
b	1"	3/4"
c	7/8"	3/4"
d	1"	3/4"
e	1"	3/4"
f	7/8"	3/4"
g	1"	3/4"
h	7/8"	1 1/8"
i	3/8"	3/4"
j	2 3/8"	2 3/8"
k	2 3/8"	2 1/2"
l	2 1/4"	2 3/8"
m	2 1/4"	2 1/2"
n	2 3/8"	2 1/2"
o	2 3/8"	2 1/2"
p	2 1/4"	2 1/2"

### BEARING SEAT ELEVATIONS

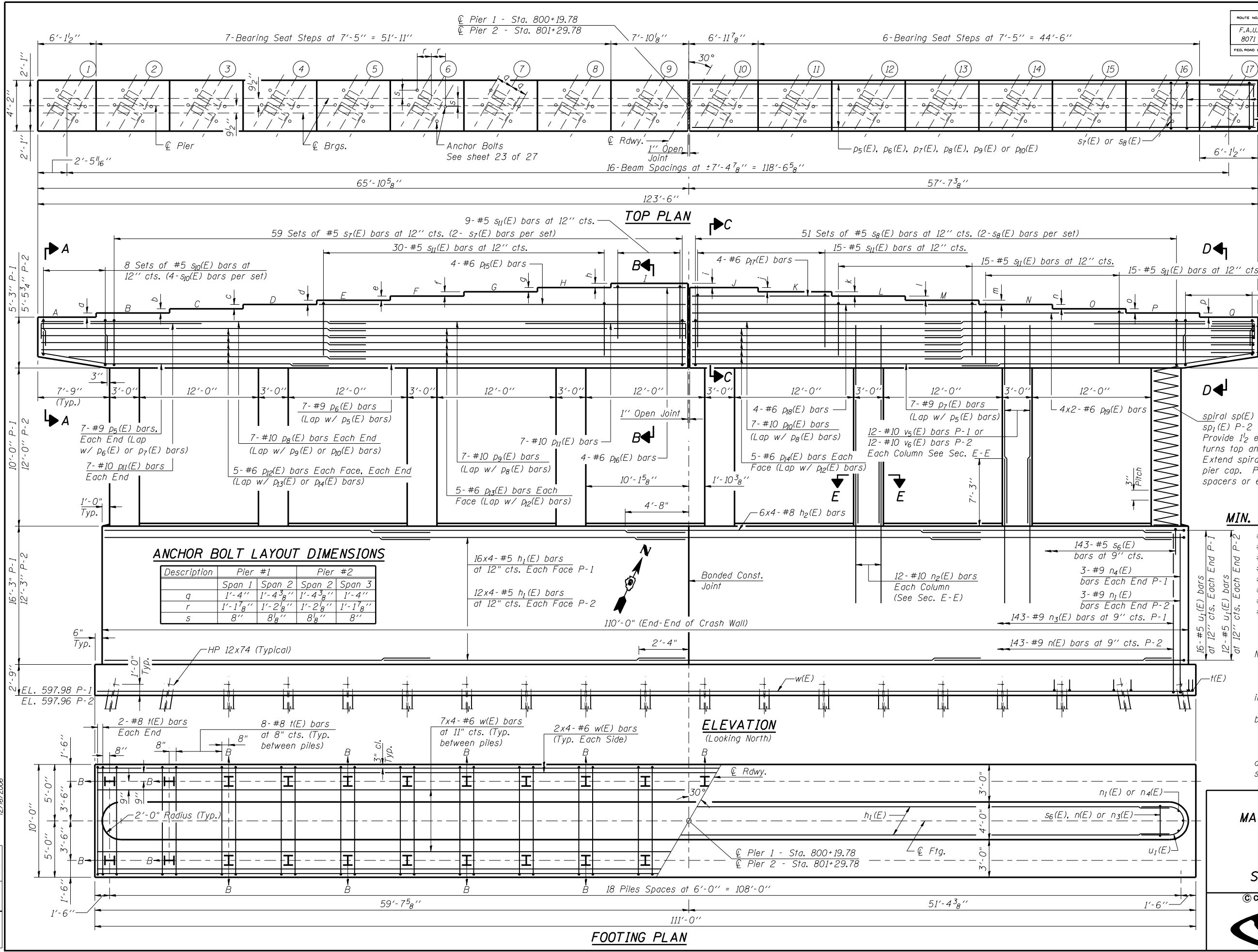
Description	Pier 1	Pier 2
A	632.23	630.44
B	632.32	630.51
C	632.40	630.58
D	632.47	630.64
E	632.55	630.70
F	632.63	630.77
G	632.71	630.83
H	632.79	630.89
I	632.86	630.96
J	632.83	630.90
K	632.64	630.70
L	632.44	630.49
M	632.25	630.29
N	632.06	630.08
O	631.86	629.88
P	631.67	629.67
Q	631.48	629.46

### MIN. BAR LAPS

- #4 - 1'-8"
- #5 - 2'-2"
- #6 - 2'-7"
- #7 - 3'-5"
- #8 - 4'-6"
- #9 - 5'-9"
- #10 - 7'-3"
- #4 Spirals - 2'-0"

Notes:  
 Space reinforcement in cap to miss anchor bolts. Pour steps monolithically with cap.  
 Reinforcement bars indicated thus 6x2-#5 etc. indicates 6 lines of bars with 2 lengths per line. See sheet 21 of 27 for pier details, sections, and bill of material.  
 P-1 indicates Pier #1 etc.  
 B indicates Battered Pile and arrow indicates direction to batter the pile. Pile batter pattern is symmetrical about footing.  
 Corporate License Number 184-001-084

**PIERS 1 & 2**  
**MACARTHUR BLVD. OVER N.S. R.R.**  
**SECTION 02-00382-02-PV**  
**SANGAMON COUNTY**  
**STATION 800+69.78**  
**STRUCTURE NUMBER 084-0512**



### ANCHOR BOLT LAYOUT DIMENSIONS

Description	Pier #1		Pier #2	
	Span 1	Span 2	Span 2	Span 3
q	1'-4"	1'-4 3/8"	1'-4 3/8"	1'-4"
r	1'-1 7/8"	1'-2 1/8"	1'-2 1/8"	1'-1 7/8"
s	8"	8 1/2"	8 1/2"	8"

### ELEVATION (Looking North)

LAYOUT 06/27/03  
 DRAWN 01/04/05  
 REVIEWED JMM 02/24/05  
 \$FILES\$ 12/16/2006