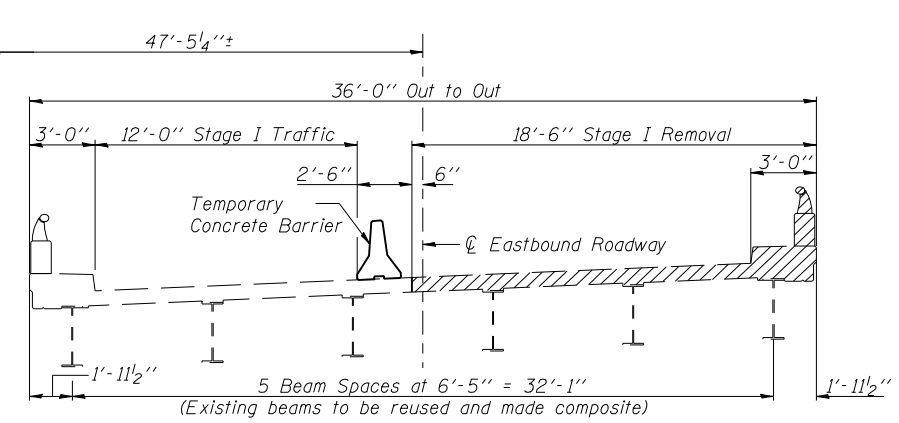
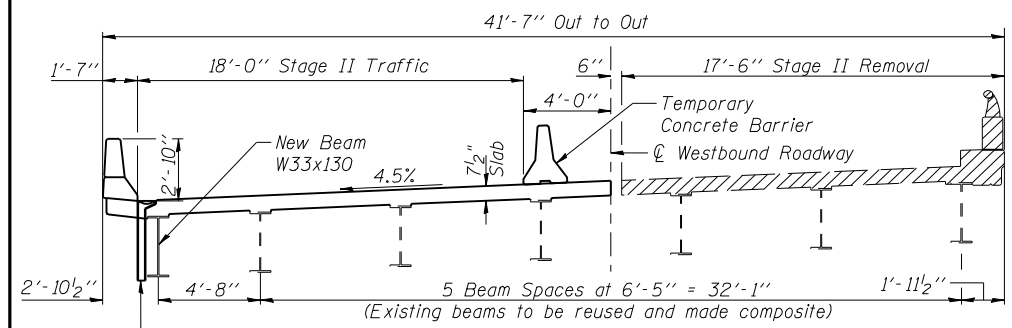


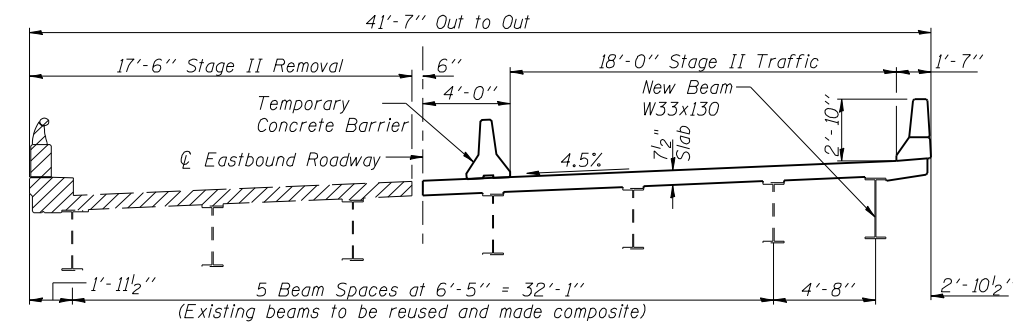
STAGE I REMOVAL
(Westbound Structure)



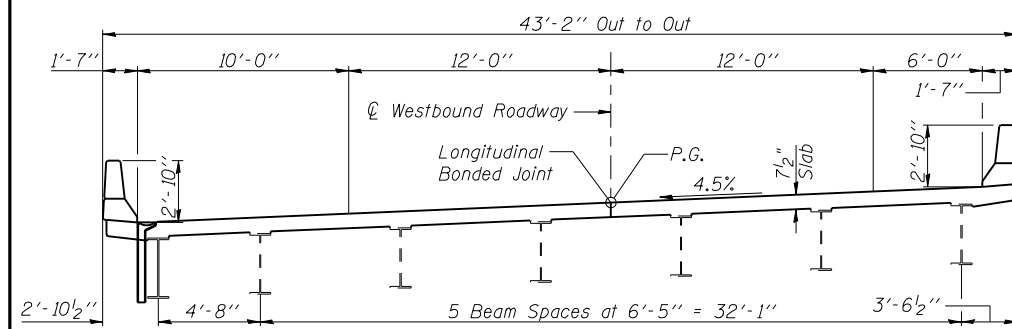
STAGE I REMOVAL
(Eastbound Structure)



STAGE I CONSTRUCTION AND STAGE II REMOVAL
(Westbound Structure)

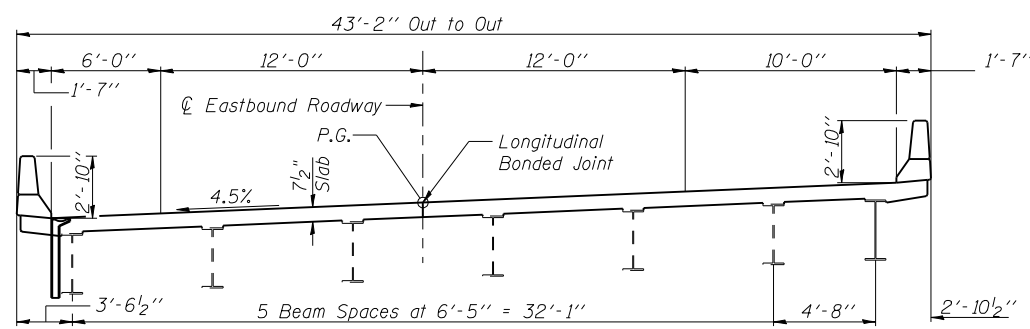


STAGE I CONSTRUCTION AND STAGE II REMOVAL
(Eastbound Structure)



STAGE I CONSTRUCTION

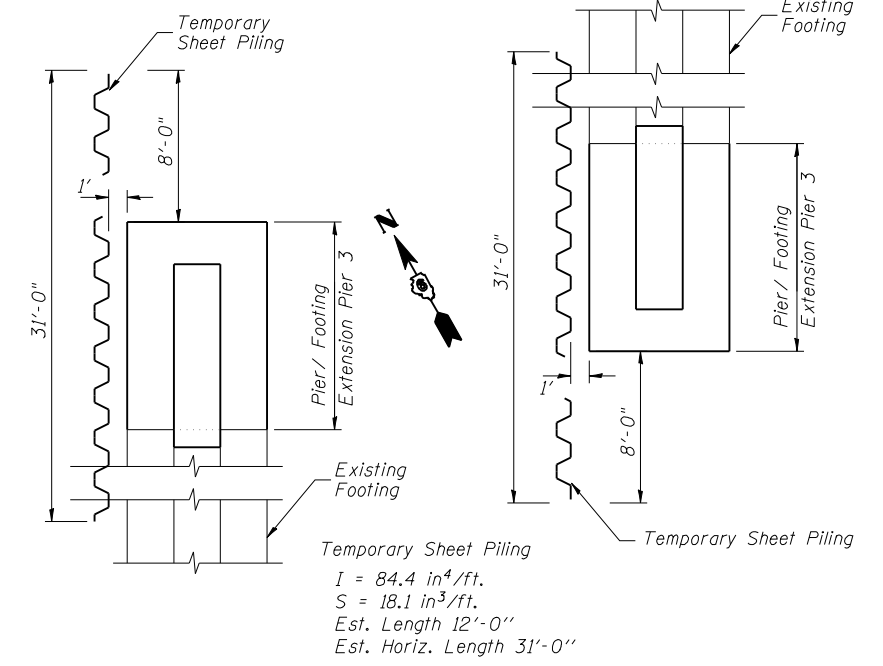
FINAL DECK CROSS SECTION
(Westbound Structure)



STAGE II CONSTRUCTION

FINAL DECK CROSS SECTION
(Eastbound Structure)

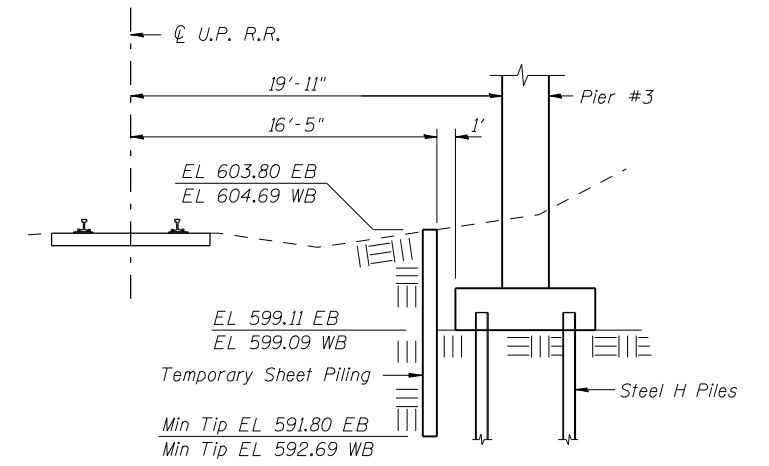
Notes:
Cross Sections are shown looking East.
Horizontal dimensions measured radially.
For temporary sheet piling details at the abutments, see sheets 24, 27, 30 & 33 of 44.



PLAN AT WESTBOUND PIER #3

PLAN AT EASTBOUND PIER #3

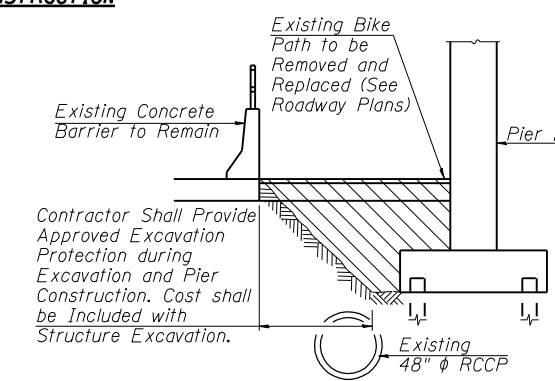
Temporary Sheet Piling
I = 84.4 in⁴/ft.
S = 18.1 in³/ft.
Est. Length 12'-0"
Est. Horiz. Length 31'-0"



SECTION AT WESTBOUND & EASTBOUND PIER #3

(Looking North)
Dimensions perpendicular to U.P. R.R.

TEMPORARY SHEET PILING DETAILS



SECTION AT PIER 2

Corporate License Number 184-001-084

STAGE CONSTRUCTION DETAILS
F.A.I. 72 OVER UNION PACIFIC RAILROAD
SECTION (84-9-4)A, HBK, BY, BY-1
SANGAMON COUNTY
STATION 608+51.98
STR NO. 084-0074 EB - 084-0075 WB

© Copyright Hanson Professional Services Inc. SMS_YEAR\$



JOB#

96S2002B

DATE

01/12/06

s\$FILE\$
12/16/2006

LAYOUT	MM	06/27/03
DRAWN	DAP	07/17/03
REVIEWED	JMM	10/27/03