

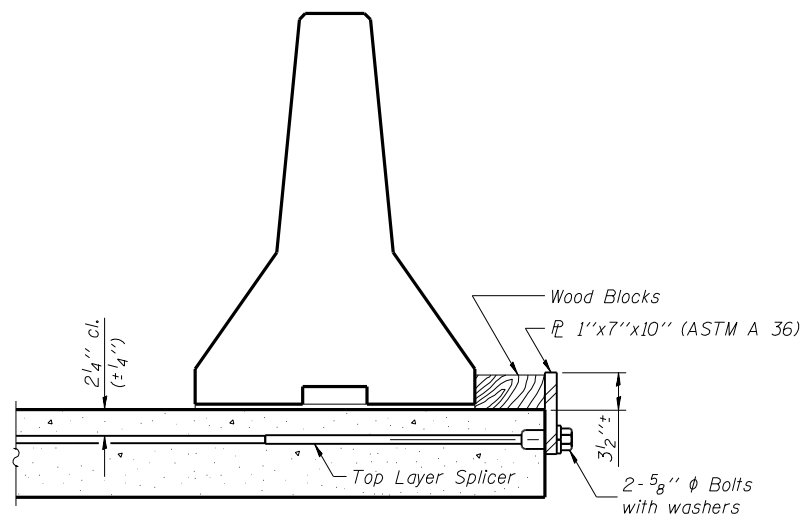
**SECTIONS THRU SLAB**

**NOTES**

**Detail I - With Bar Splicer or Couplers:**  
Connect one (1) 1"x7"x10" steel PL to the top layer of couplers with 2-5/8" φ bolts screwed to coupler at approximate CL of each barrier panel.

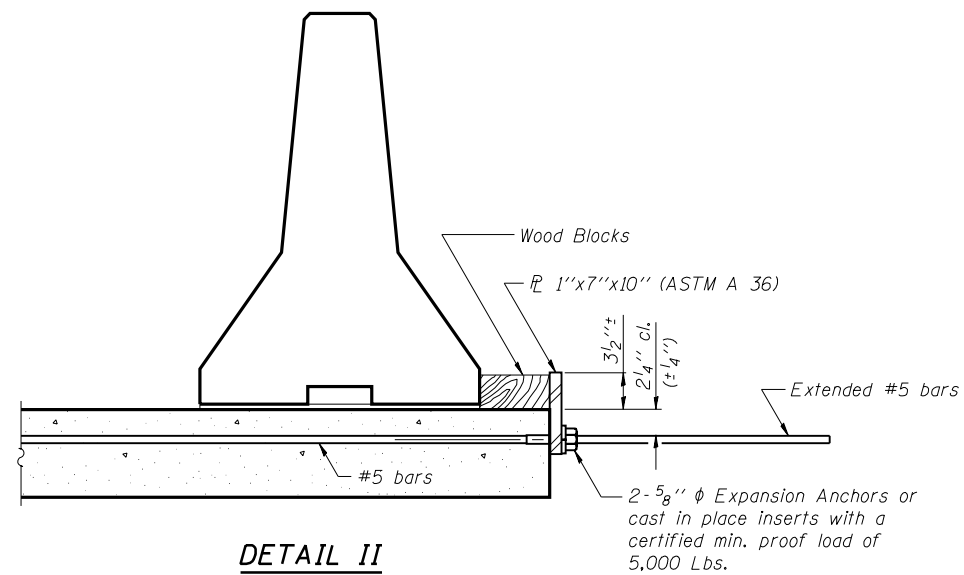
**Detail II - With Extended Reinforcement Bars:**  
Connect one (1) 1"x7"x10" steel PL to the concrete slab with 2-5/8" φ Expansion Anchors or cast in place inserts spaced between the top layer of reinforcement at approximate CL of each barrier panel.

Cost of anchorage is included with Temporary Concrete Barrier.



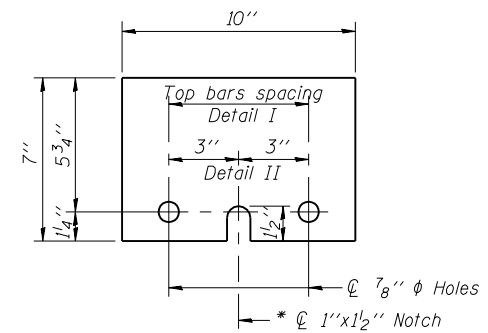
**DETAIL I**

The 1"x7"x10" Plate shall not be removed until Stage II Construction forms and reinforcement bars are in place.



**DETAIL II**

The 1"x7"x10" Plate shall not be removed until Stage II Construction forms and all reinforcement bars are in place and the concrete is ready to be placed.



**1"x7"x10"**

\* Required only with Detail II

MMW 06/27/03  
DAP 07/17/03  
JMM 10/27/03

Corporate License Number 184-001-084

**TEMPORARY CONCRETE BARRIER**  
F.A.I. 72 OVER UNION PACIFIC RAILROAD  
SECTION (84-9-4)A,HBK,BY,BY-1  
SANGAMON COUNTY  
STATION 608+51.98  
STR NO. 084-0074 EB - 084-0075 WB

© Copyright Hanson Professional Services Inc. \$MS\_YEARS

**HANSON**

JOB# 96S2002B  
DATE 01/12/06