

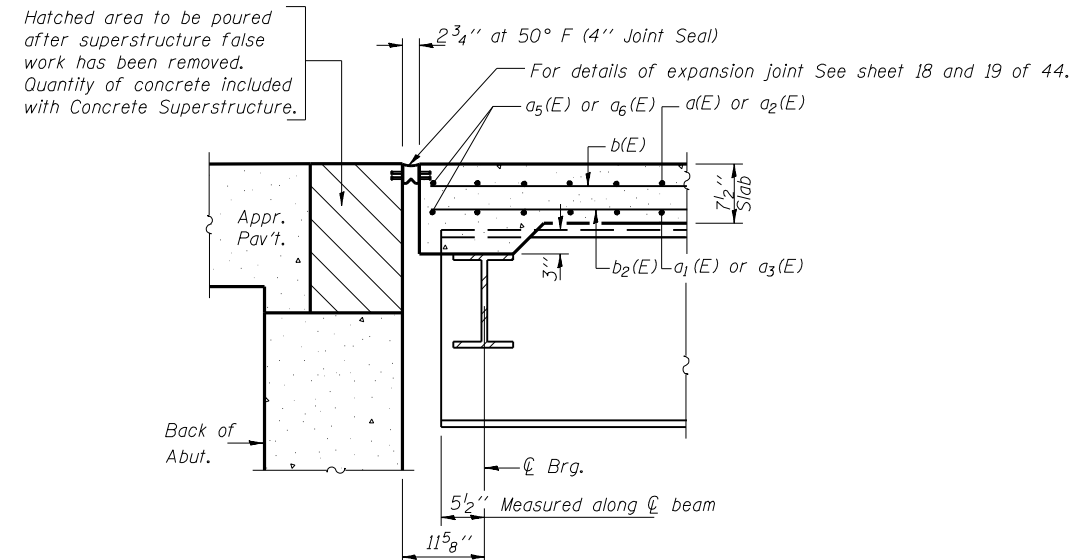
**WESTBOUND
SUPERSTRUCTURE
BILL OF MATERIAL**

Bar	No.	Size	Length	Shape
a(E)	381	#5	23'-0"	—
a ₁ (E)	267	#5	22'-6"	—
a ₂ (E)	384	#5	19'-1"	—
a ₃ (E)	269	#5	18'-7"	—
a ₄ (E)	402	#6	4'-6"	—
a ₅ (E)	8	#5	14'-9"	—
a ₆ (E)	8	#5	12'-3"	—
a ₇ (E)	16	#5	1'-6"	—
a ₈ (E)	8	#5	18'-8"	—
a ₉ (E)	5	#5	19'-6"	—
a ₁₀ (E)	11	#5	23'-10"	—
a ₁₁ (E)	7	#5	24'-4"	—
a ₁₂ (E)	9	#5	19'-9"	—
a ₁₃ (E)	6	#5	20'-2"	—
a ₁₈ (E)	10	#5	22'-10"	—
a ₂₀ (E)	7	#5	22'-3"	—
b(E)	384	#5	31'-3"	—
b ₁ (E)	132	#6	38'-6"	—
b ₂ (E)	378	#5	28'-0"	—
d(E)	513	#5	3'-0"	—
d ₁ (E)	513	#5	2'-5"	┘
d ₂ (E)	513	#4	3'-0"	—
d ₃ (E)	513	#4	3'-7"	└
e(E)	36	#4	14'-10"	—
e ₁ (E)	32	#8	26'-0"	—
e ₂ (E)	32	#5	24'-9"	—
e ₃ (E)	72	#4	7'-8"	—
e ₄ (E)	24	#8	7'-8"	—
e ₅ (E)	24	#5	7'-8"	—
e ₆ (E)	54	#4	15'-6"	—
e ₇ (E)	36	#4	15'-3"	—
e ₈ (E)	18	#4	14'-4"	—
Concrete Superstructure		Cu. Yds.	333.7	
Reinforcement Bars (Epoxy Coated)		Lbs.	74550	

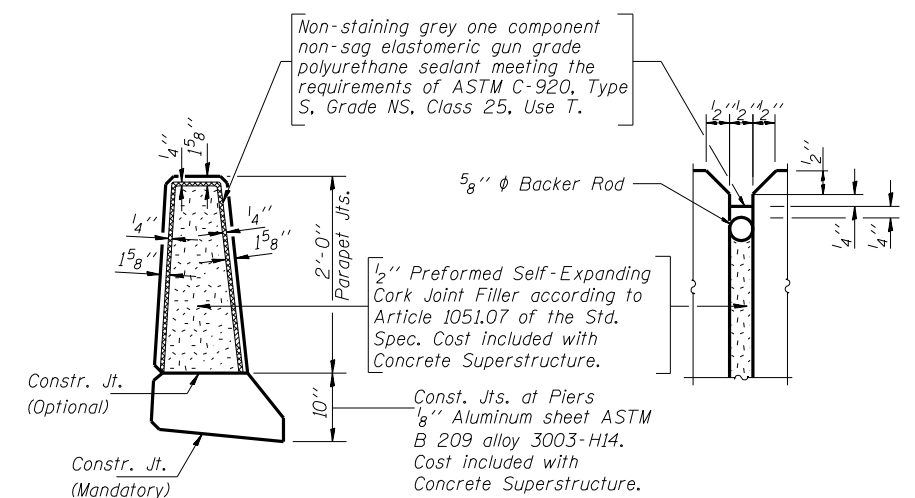
Reinforcement bars designated (E) shall be epoxy coated. Cut longitudinal reinforcement to clear drainage scuppers.

MIN. BAR LAPS

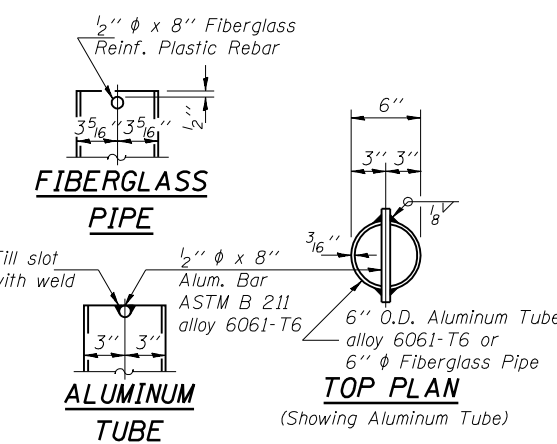
- #5 Bar - 2'-2"
- #6 Bar - 2'-7"
- #8 Bar - 4'-6"



SECTION A-A
(At Rt. <s to Bk. Abutment)



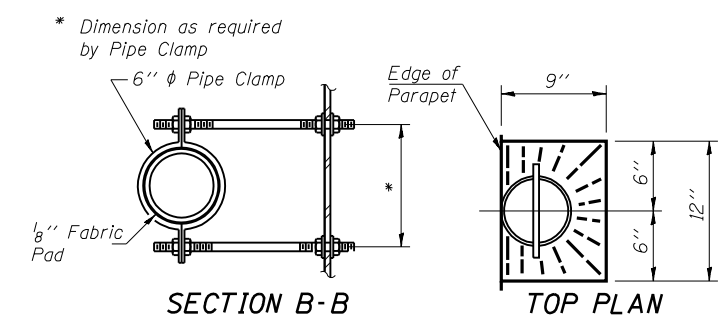
PARAPET JOINT DETAILS



FIBERGLASS PIPE

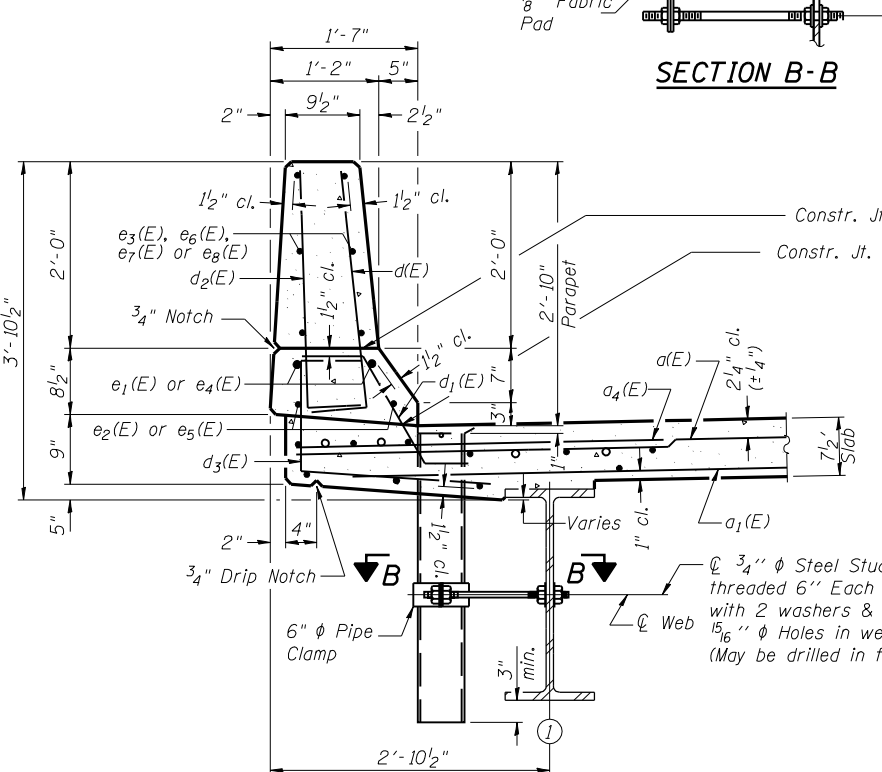
ALUMINUM TUBE

TOP PLAN
(Showing Aluminum Tube)

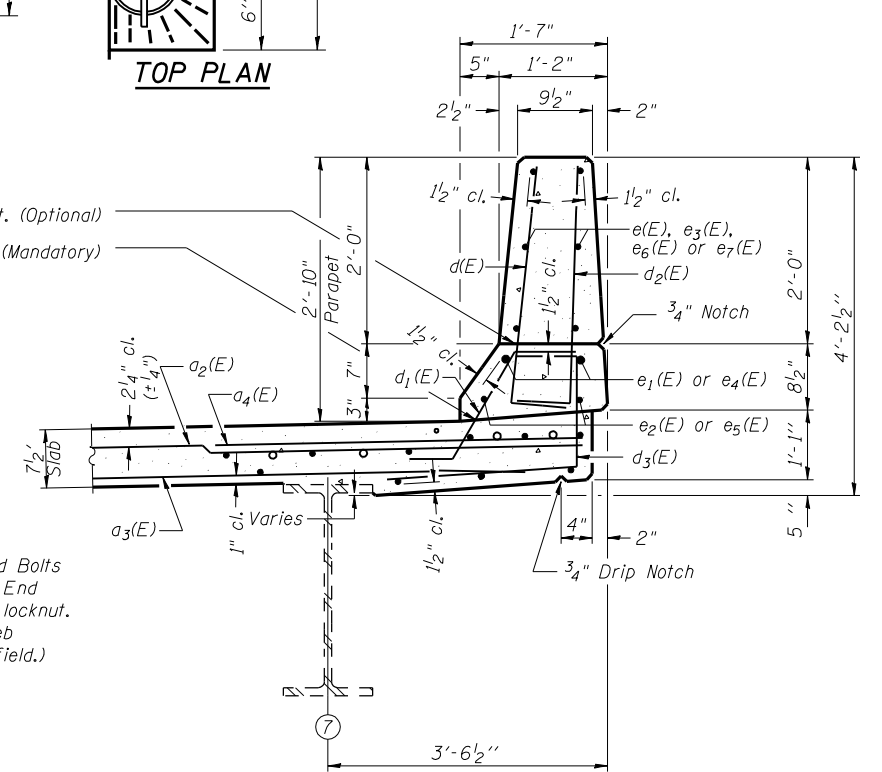


SECTION B-B

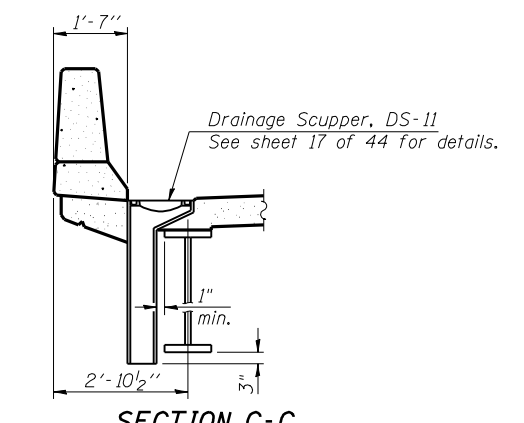
TOP PLAN



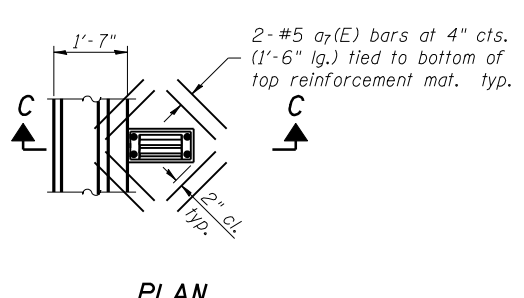
SECTION THRU NORTH PARAPET
(Looking East Upstation)



SECTION THRU SOUTH PARAPET
(Looking East Upstation)



SECTION C-C



PLAN

MMW 06/27/03
DAP 07/17/03
JMM 10/27/03

Corporate License Number 184-001-084
SUPERSTRUCTURE DETAILS- WESTBOUND
F.A.I. 72 OVER UNION PACIFIC RAILROAD
SECTION (84-9-4)A, HBK, BY, BY-1
SANGAMON COUNTY
STATION 608+51.98
STR NO. 084-0074 EB - 084-0075 WB