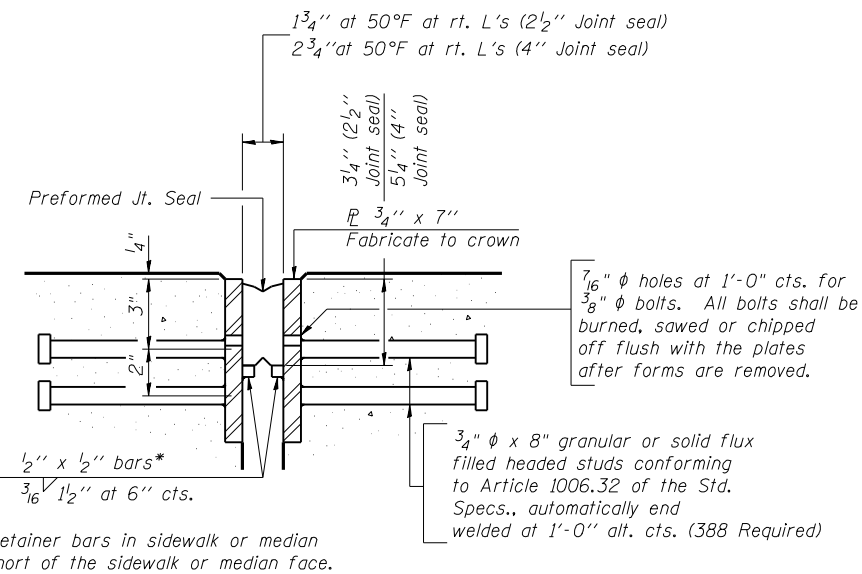
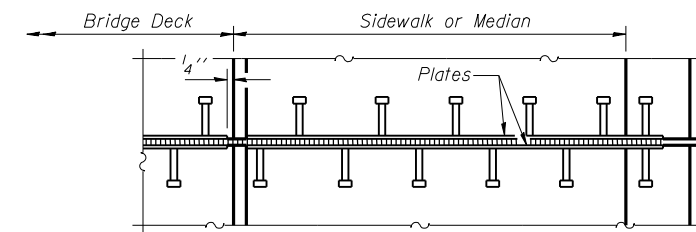


GENERAL NOTES

Furnish steel plates in segments of 20 feet maximum length. Maximum space between installed segments shall be 3/16". Seal space with silicone sealant suitable for structural steel.



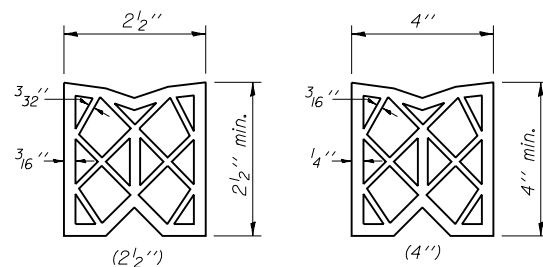
Bridge Joint System (Expansion)		
Design Movement	Required Preformed Joint Seal Size	Required Strip Seal Rated movement
1"	2 1/2"	1"
1 5/8"	4"	2"



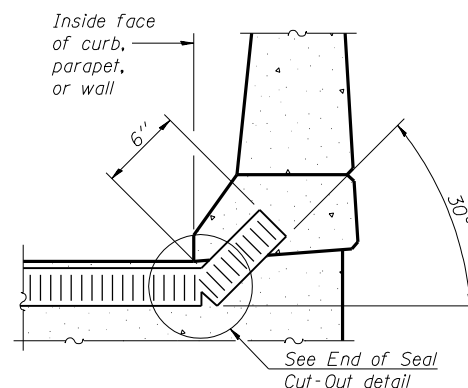
PLAN AT SIDEWALK OR MEDIAN

SECTION THRU EXPANSION JOINT

(2 1/2 inch and 4 inch joint seals)

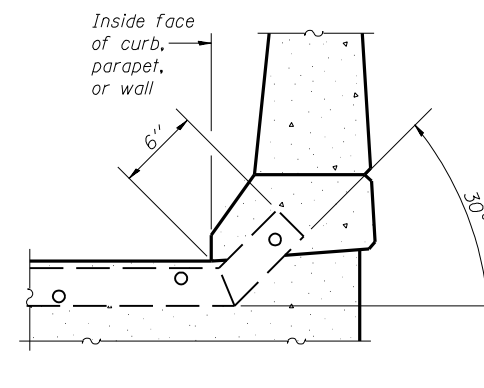


PREFORMED JOINT SEAL



AT CURB, PARAPET, OR WALL

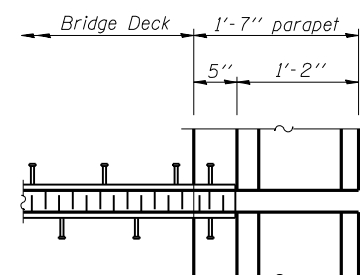
(Showing seal)



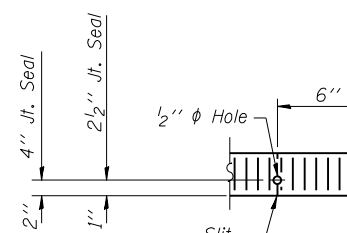
AT CURB, PARAPET, OR WALL

(Showing plate)

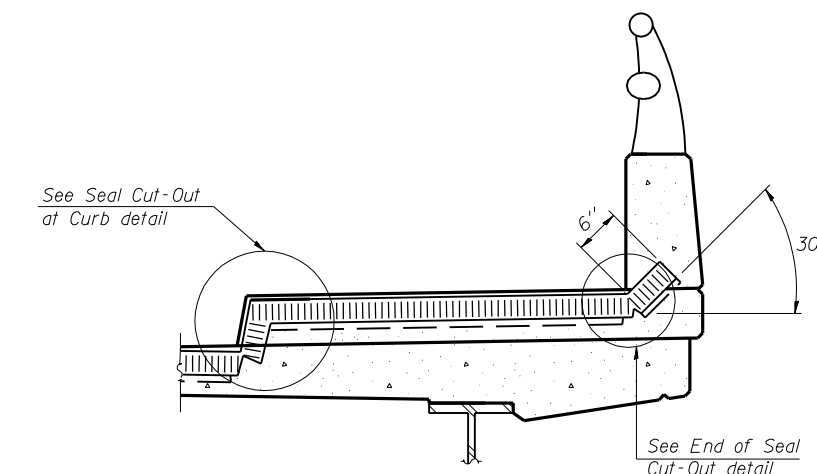
TYPICAL END TREATMENTS



PLAN AT PARAPET



END OF SEAL CUT-OUT



AT SIDEWALK OR MEDIAN*

(Showing plate and seal)

*Shorter plates with a single row of studs at 12 inch centers may be necessary on medians which are shallower than 9 inch. See manufacturer's recommendation.

BILL OF MATERIAL

Item	Unit	Total
Bridge Joint System (Expansion) 1 5/8"	foot	187

(Sheet 1 of 2)

Corporate License Number 184-001-084

BRIDGE JOINT SYSTEM - EXPANSION (PREFORMED JOINT SEAL)
F.A.I. 72 OVER UNION PACIFIC RAILROAD
SECTION (84-9-4)A,HBK,BY,BY-1
SANGAMON COUNTY, STATION 608+51.98
STR NO. 084-0074 EB - 084-0075 WB

© Copyright Hanson Professional Services Inc. SMS_YEAR\$



JOB# 96S2002B

DATE 01/12/06

FILE# 12/16/2006
 LAYOUT MWM 06/27/03
 DRAWN DAP 07/17/03
 REVIEWED JMM 10/27/03