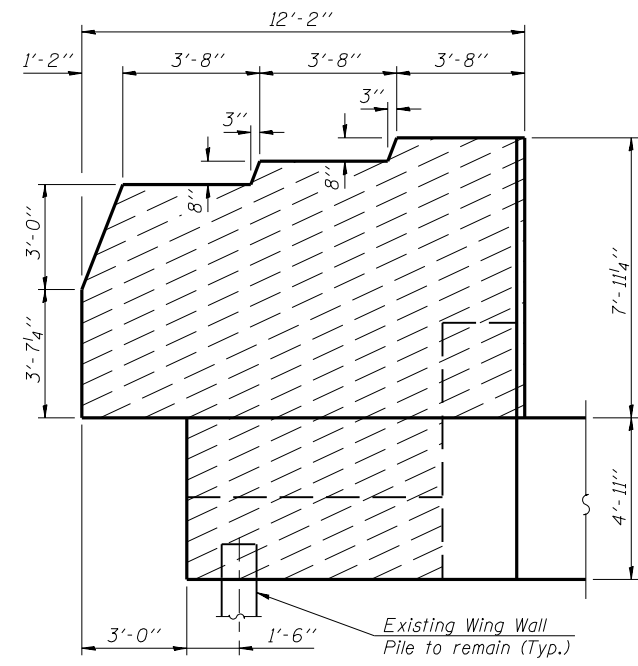


* Elevations given are from existing plans, and have been adjusted by deducting 0.69'. The comparison data is based on a survey of the existing bearing seats, and is subject to normal construction tolerance variations.

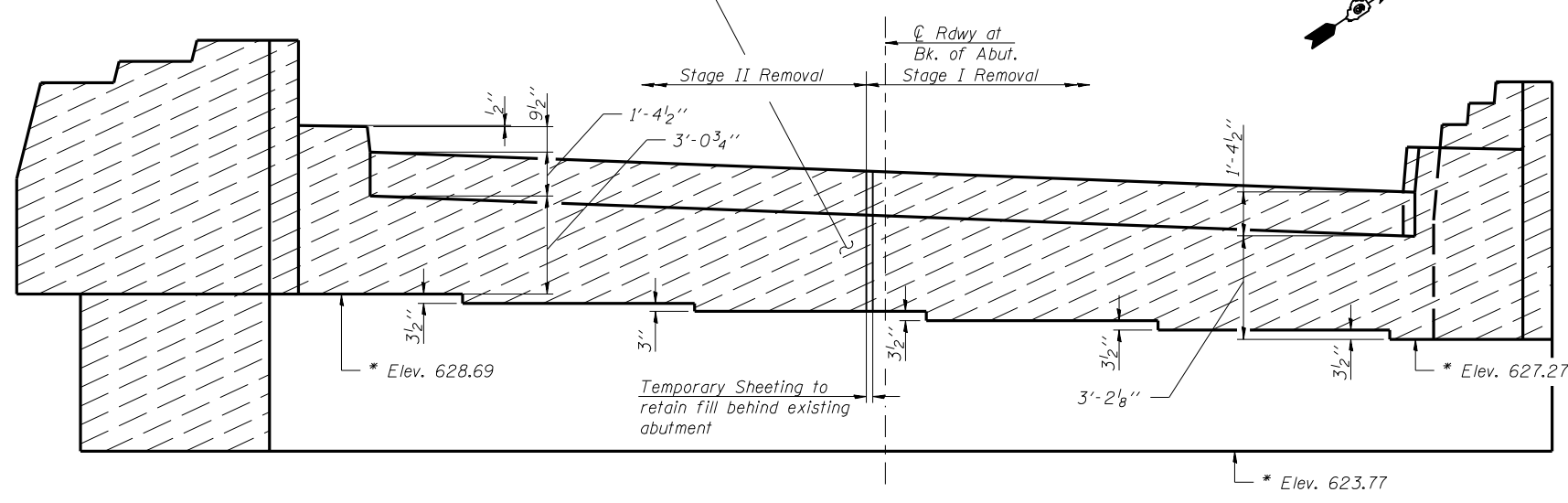
Salvage existing vertical reinforcement bars. Cut as required to provide minimum 2'-2" lap with new backwall vertical reinforcement bars. Bars damaged or not salvaged shall be replaced in kind with drilled and epoxy grouted bars as directed by the Engineer. No additional compensation will be allowed for grouted bars.

ROUTE NO.	SECTION	COUNTY	TOTAL SHEETS	SHEET NO.	SHEET NO. 24 44 SHEETS
FAI 72	*	SANGAMON	559	277	
FED. ROAD DIST. NO. 7	ILLINOIS	FED. AID PROJECT			

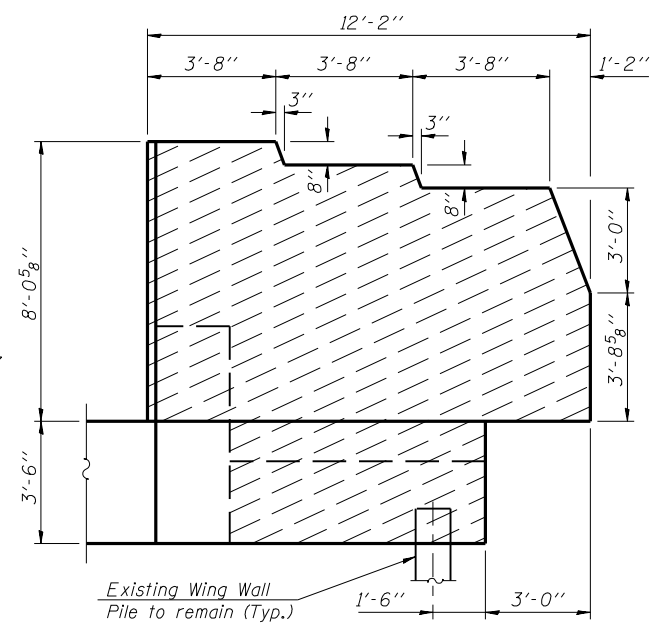
*(84-9-4)A, HBK, BY, BY-1 Contract No 72541



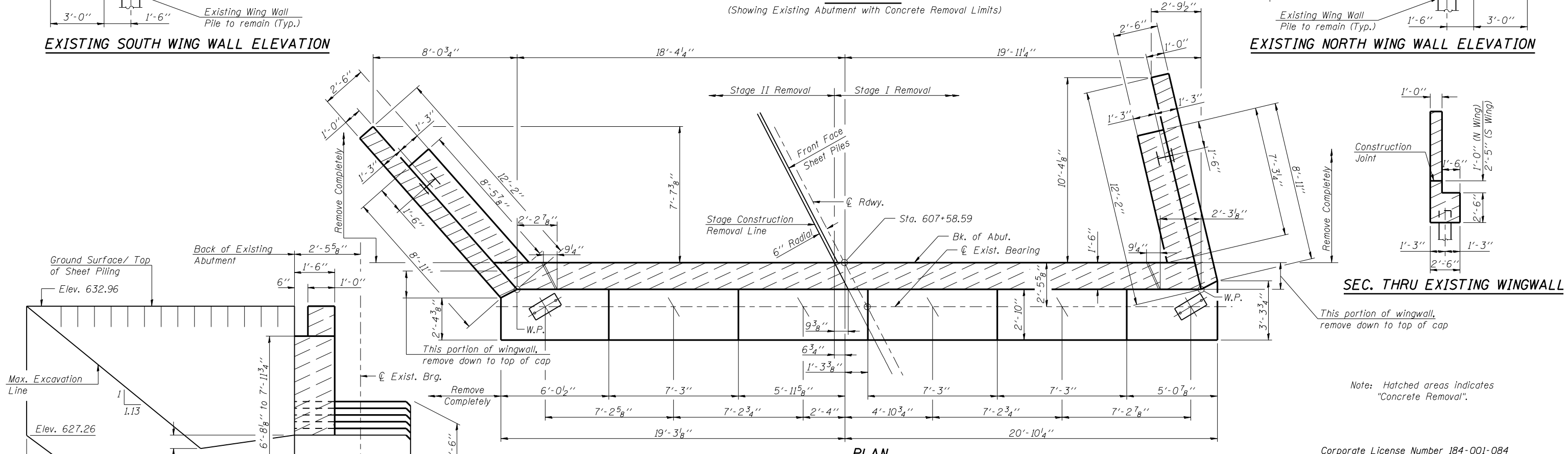
EXISTING SOUTH WING WALL ELEVATION



ELEVATION
(Showing Existing Abutment with Concrete Removal Limits)

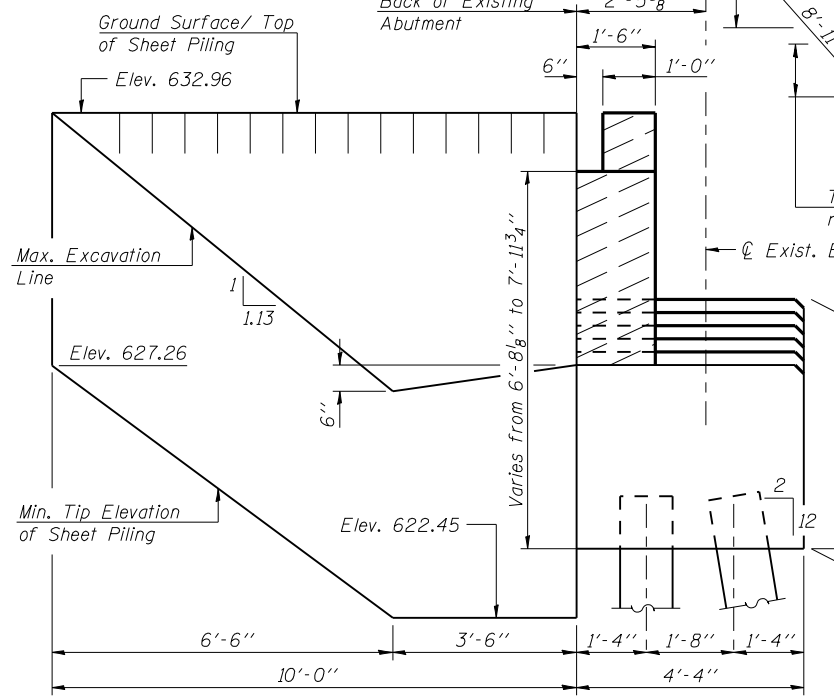


EXISTING NORTH WING WALL ELEVATION



PLAN
(Showing Existing Abutment with Concrete Removal Limits)

SEC. THRU EXISTING WINGWALL



SEC. THRU EXISTING ABUT.

Temporary Sheet Piling
I = 3.2 in⁴/ft.
S = 2.0 in³/ft.

BILL OF MATERIAL

Item	Unit	Total
Concrete Removal	Cu. Yd.	19.9
Temporary Sheet Piling	Sq. Ft.	90

Corporate License Number 184-001-084
W.B. - WEST ABUT. CONCRETE REMOVAL
F.A.I. 72 OVER UNION PACIFIC RAILROAD
SECTION (84-9-4)A, HBK, BY, BY-1
SANGAMON COUNTY
STATION 608+51.98
STR NO. 084-0074 EB - 084-0075 WB

© Copyright Hanson Professional Services Inc. SMS_YEARS
HANSON
JOB# 96S2002B
DATE 01/12/06

LAYOUT MWM 06/27/03
DRAWN DAP 07/17/03
REVIEWED JMM 10/27/03
\$FILES\$ 12/16/2006