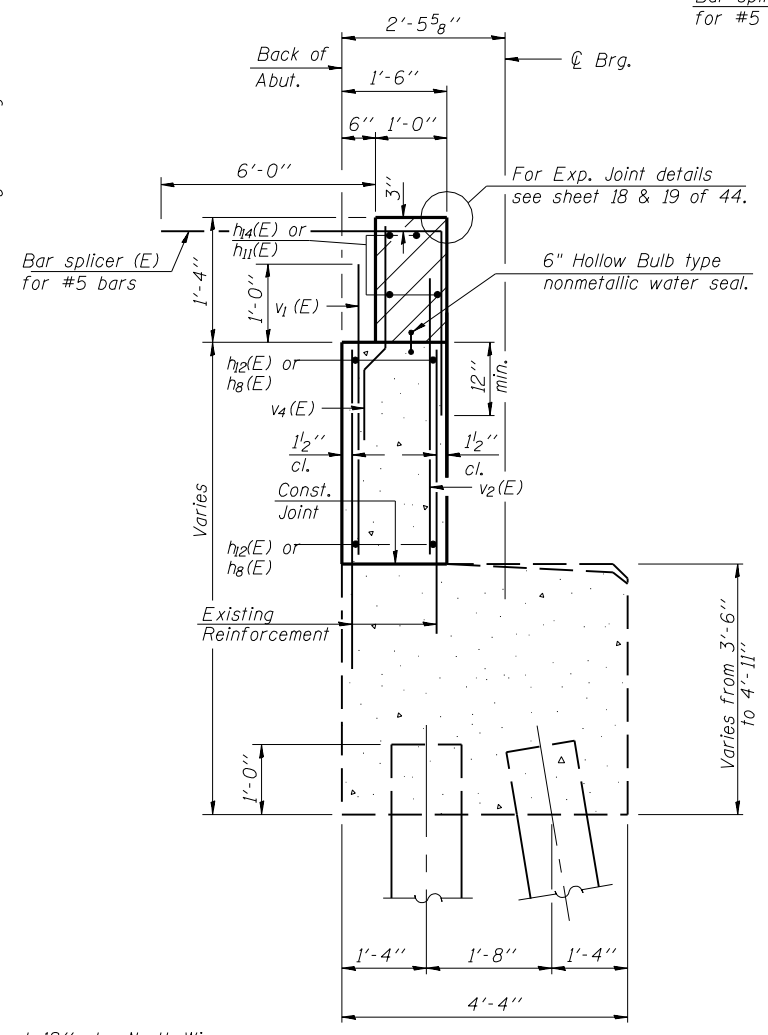
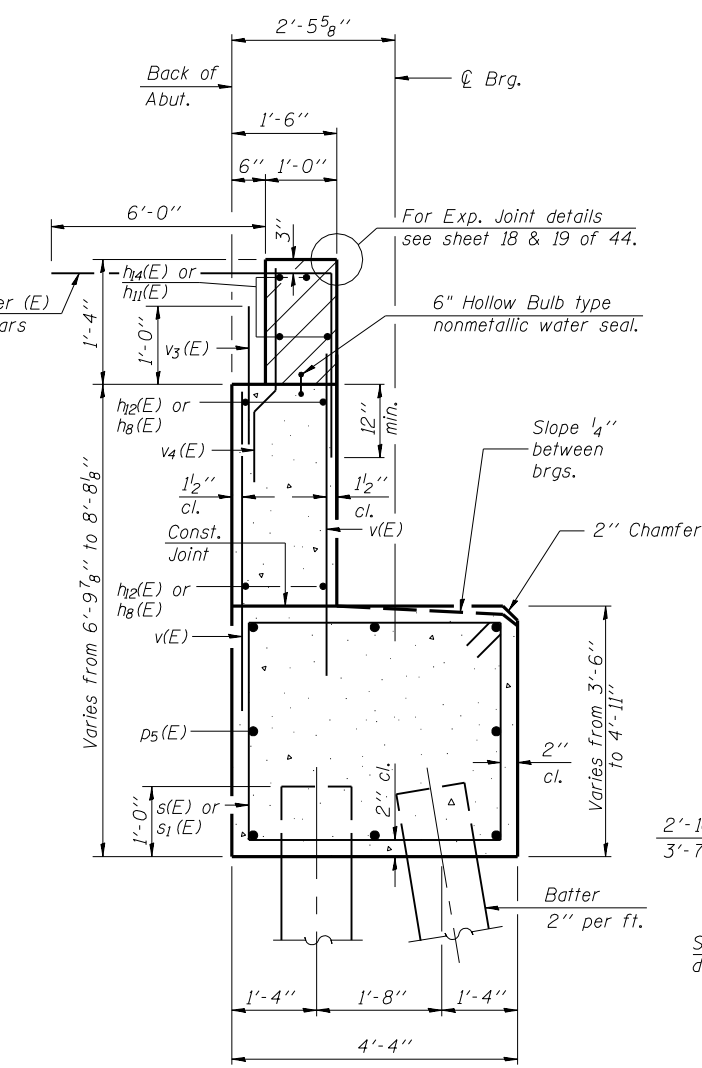


WING WALL ELEVATION
Showing Dimensions

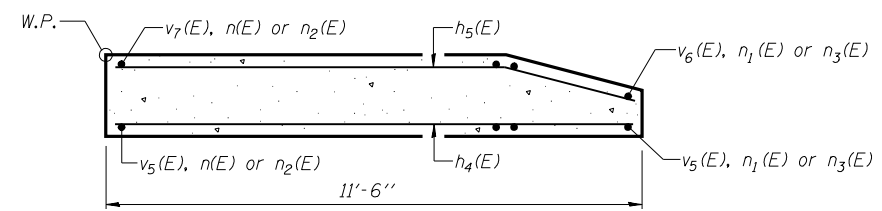
*Dimension perpendicular to Back of Abutment



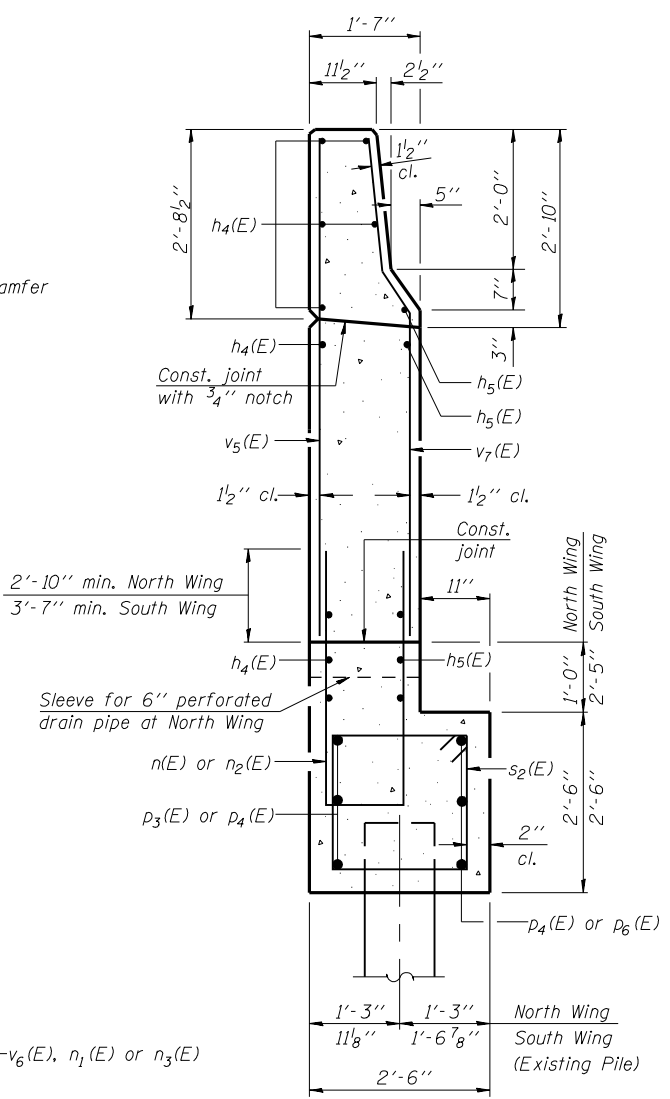
SEC. THRU EXISTING ABUT.



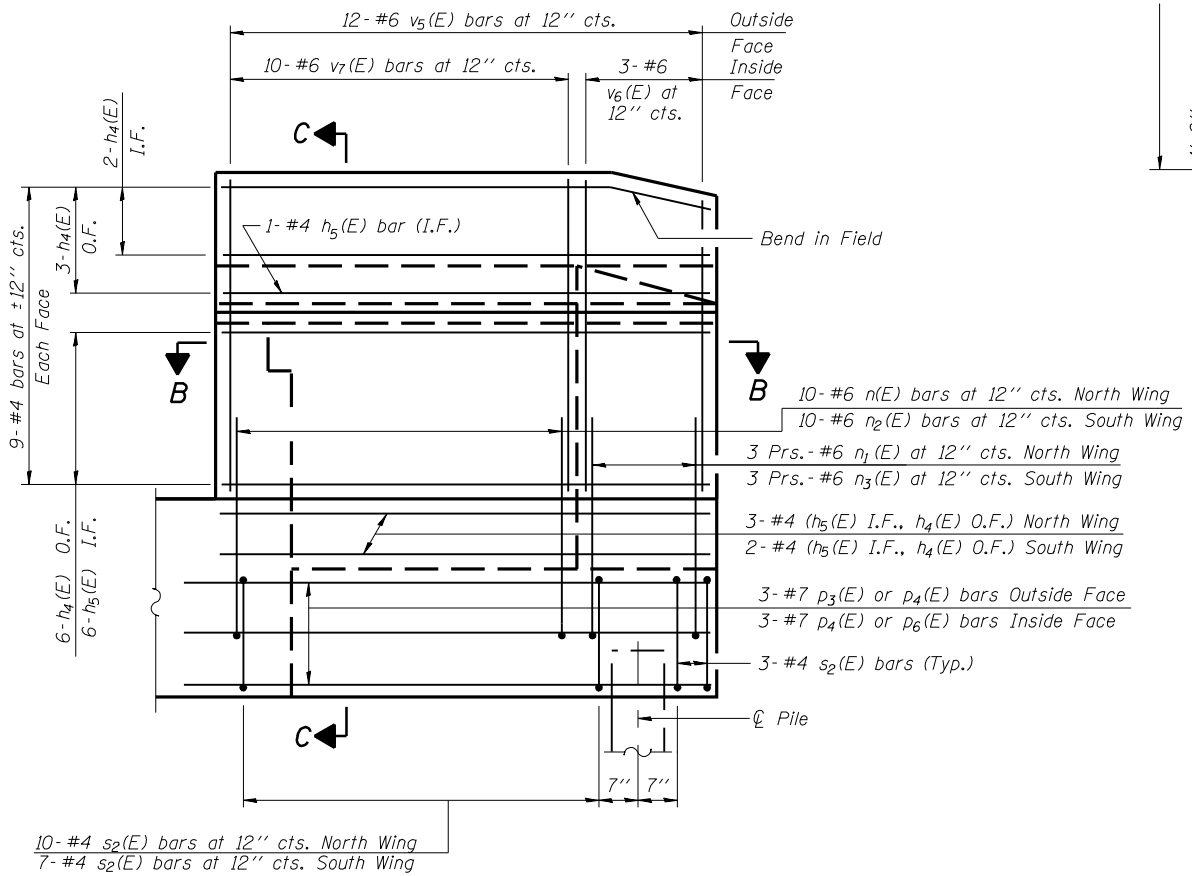
SEC. THRU ABUT.



SEC. B-B



SECTION C-C



WING WALL ELEVATION
Showing Reinforcement

Notes: Hatched area to be poured after superstructure forms have been removed. Quantity of concrete included with Concrete Superstructure. Space reinforcement in cap to miss anchor bolts. Pour steps monolithically with cap. Reinforcement bars designated (E) shall be epoxy coated. Quantity of concrete in end post included with Concrete Superstructure on sheet 13 of 44. Cost for sleeve shall be included with Concrete Structures.

MIN. BAR LAPS

- #4 Bar - 1'-8"
- #5 Bar - 2'-2"
- #6 Bar - 2'-7"
- #7 Bar - 3'-5"

LAYOUT	MMW	06/27/03
DRAWN	DAP	07/17/03
REVIEWED	JMM	10/27/03

Corporate License Number 184-001-084

WESTBOUND-EAST ABUTMENT DETAILS
F.A.I. 72 OVER UNION PACIFIC RAILROAD
SECTION (84-9-4)A, HBK, BY, BY-1
SANGAMON COUNTY
STATION 608+51.98
STR NO. 084-0074 EB - 084-0075 WB

© Copyright Hanson Professional Services Inc. SMS_YEAR\$

HANSON

JOB# 96S2002B
DATE 01/12/06