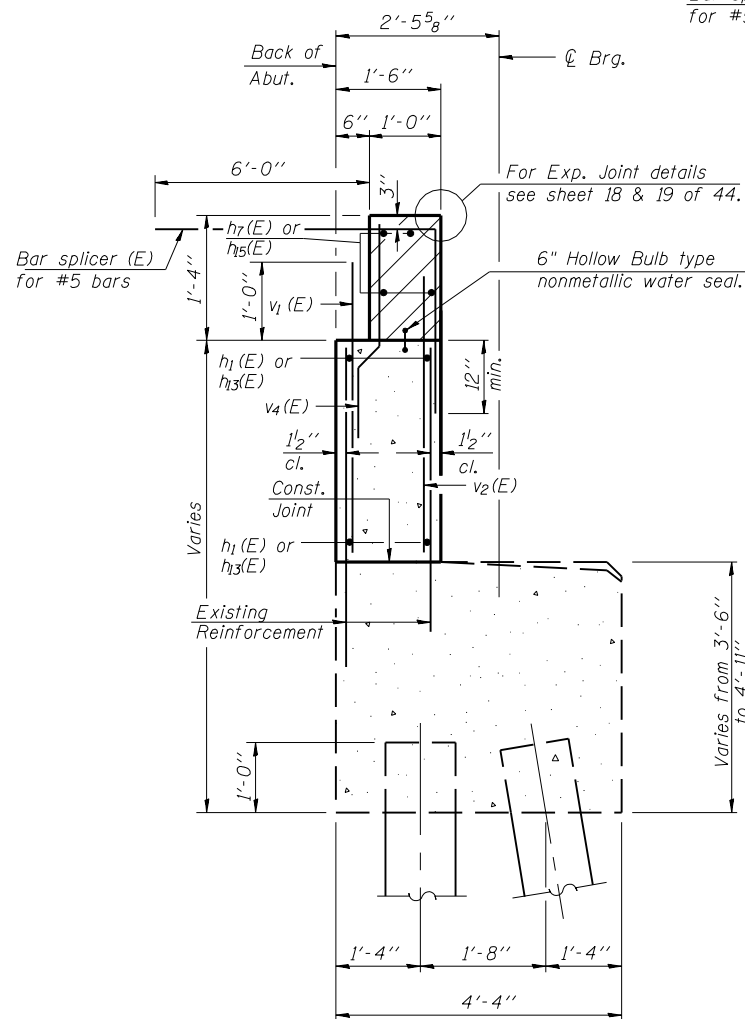


WING WALL ELEVATION

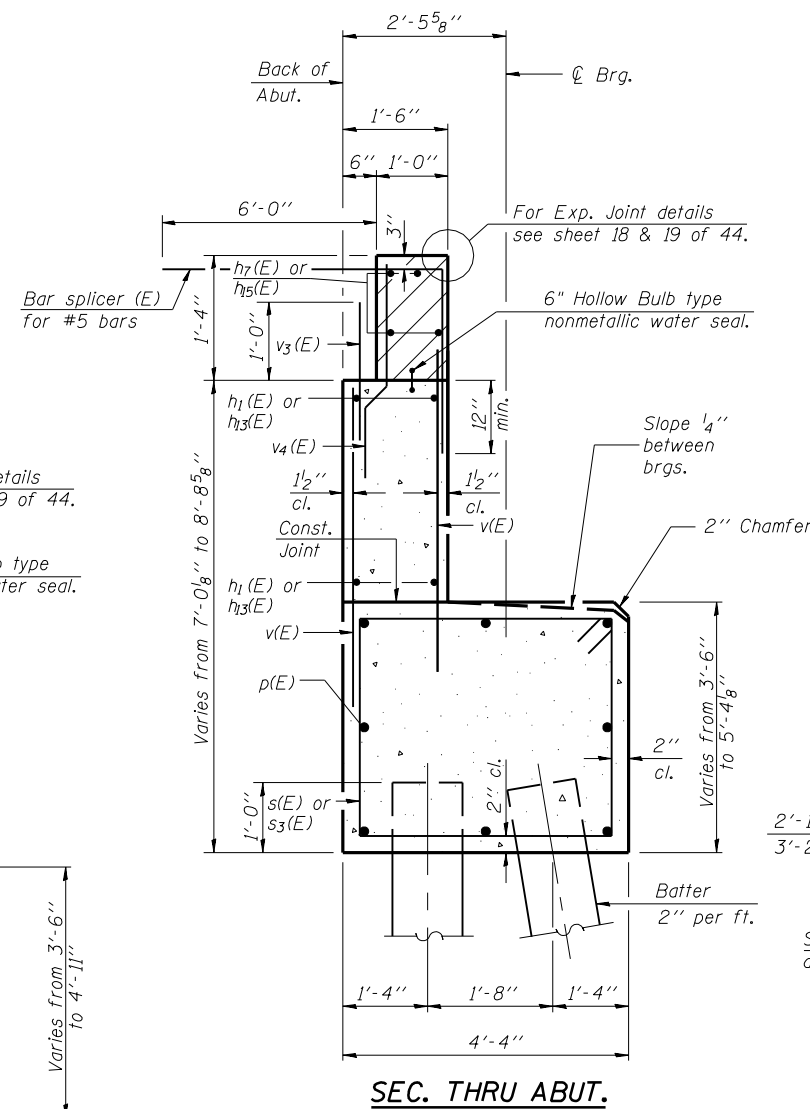
Showing Dimensions

*Dimension perpendicular to Back of Abutment

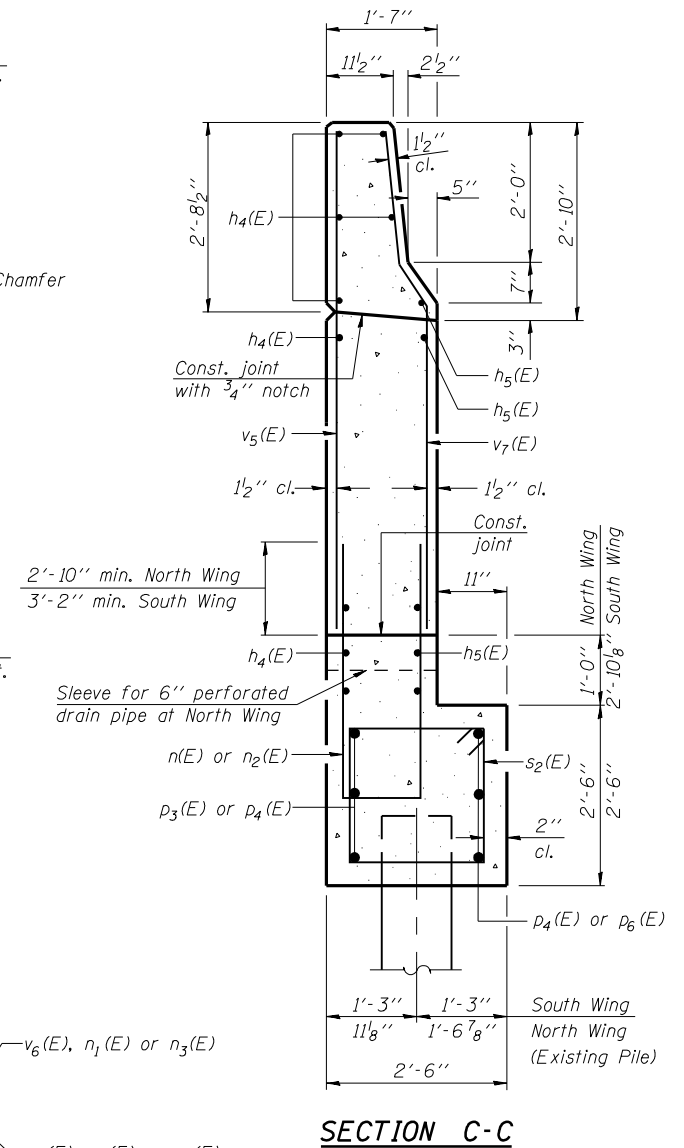
End Post shall be poured after bridge parapet is in place. Form top surface to match parapet grade.



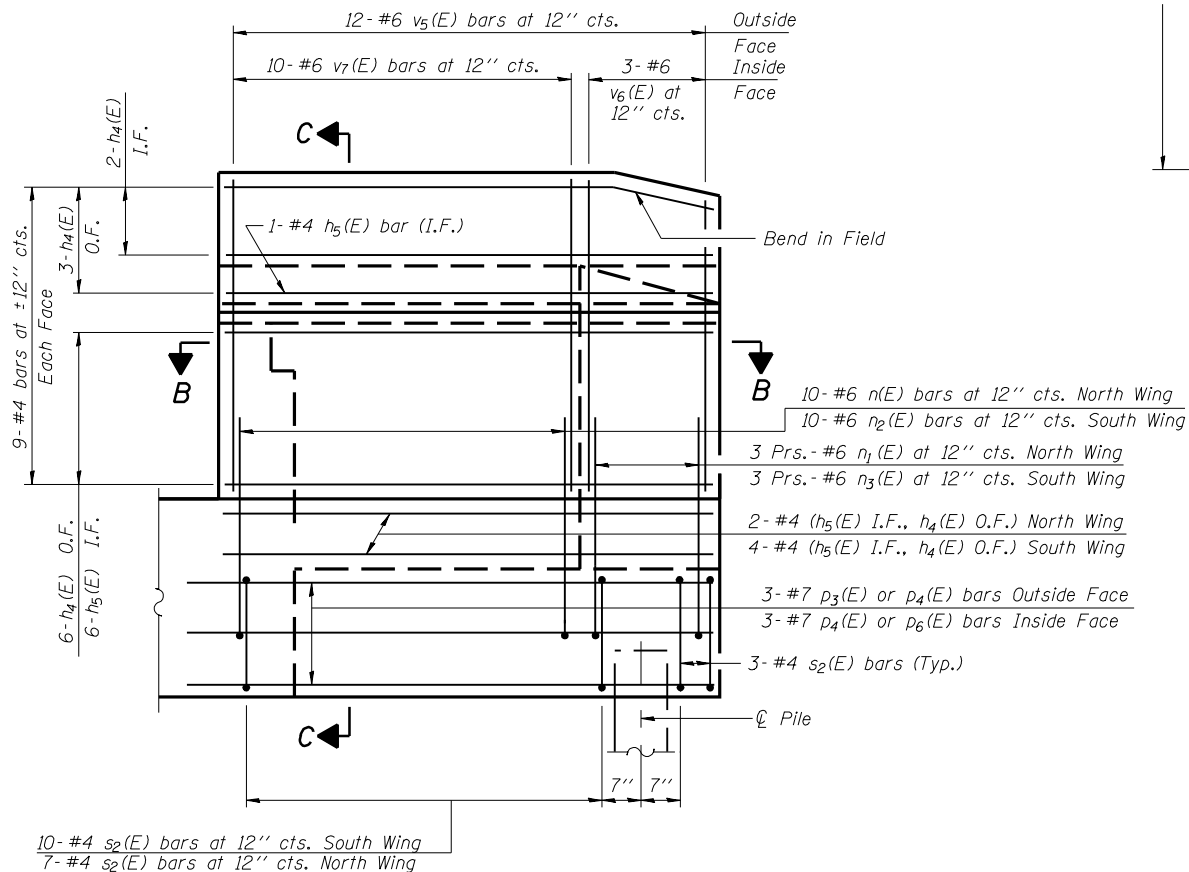
SEC. THRU EXISTING ABUT.



SEC. THRU ABUT.



SECTION C-C



WING WALL ELEVATION

Showing Reinforcement

Notes: Hatched area to be poured after superstructure forms have been removed. Quantity of concrete included with Concrete Superstructure. Space reinforcement in cap to miss anchor bolts. Pour steps monolithically with cap. Reinforcement bars designated (E) shall be epoxy coated. Quantity of concrete in end post included with Concrete Superstructure on sheet 16 of 44. Cost for sleeve shall be included with Concrete Structures.

MIN. BAR LAPS

- #4 Bar - 1'-8"
- #5 Bar - 2'-2"
- #6 Bar - 2'-7"
- #7 Bar - 3'-5"

Corporate License Number 184-001-084

EASTBOUND-WEST ABUTMENT DETAILS
F.A.I. 72 OVER UNION PACIFIC RAILROAD
SECTION (84-9-4)A, HBK, BY, BY-1
SANGAMON COUNTY
STATION 608+51.98
STR NO. 084-0074 EB - 084-0075 WB

© Copyright Hanson Professional Services Inc. SMS_YEAR\$



JOB#

96S2002B

DATE

01/12/06

LAYOUT 06/27/03
 DRAWN 07/17/03
 REVIEWED JMM 10/27/03

MMW 06/27/03
 DAP 07/17/03
 JMM 10/27/03