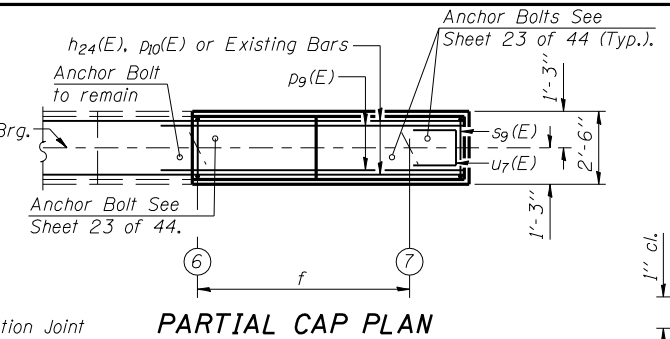
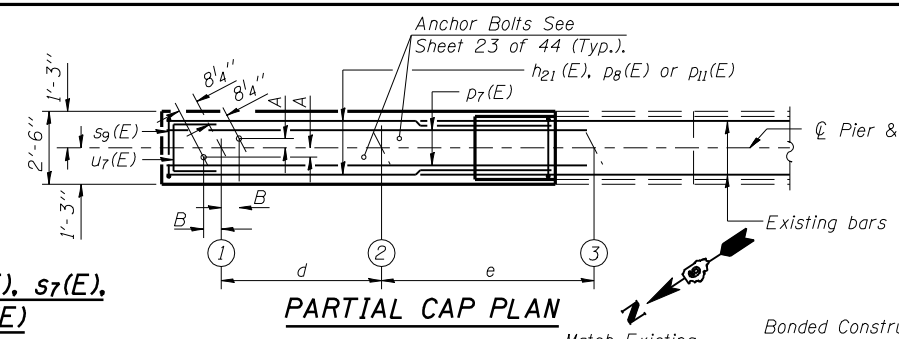


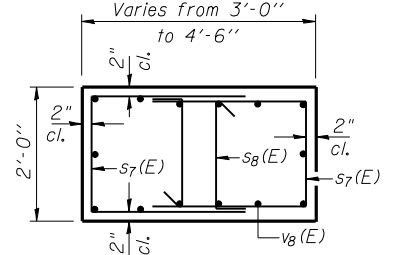
A & B DIMENSIONS

Bar	A	B
s ₄ (E)	2'-2"	4'-4"
s ₅ (E)	2'-2"	9'-5"
s ₆ (E)	2'-2"	12'-5"
s ₇ (E)	1'-8"	2'-10"
s ₁₀ (E)	1'-10"	2'-7"
u ₆ (E)	2'-1"	2'-2"
u ₇ (E)	2'-1"	2'-7"

BARS s₄(E), s₅(E), s₆(E), s₇(E), s₁₀(E), u₆(E) & u₇(E)



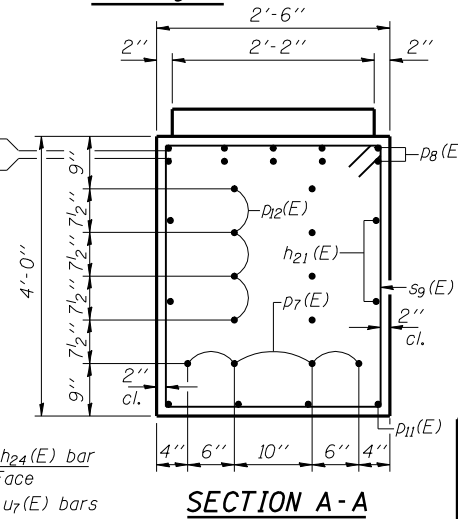
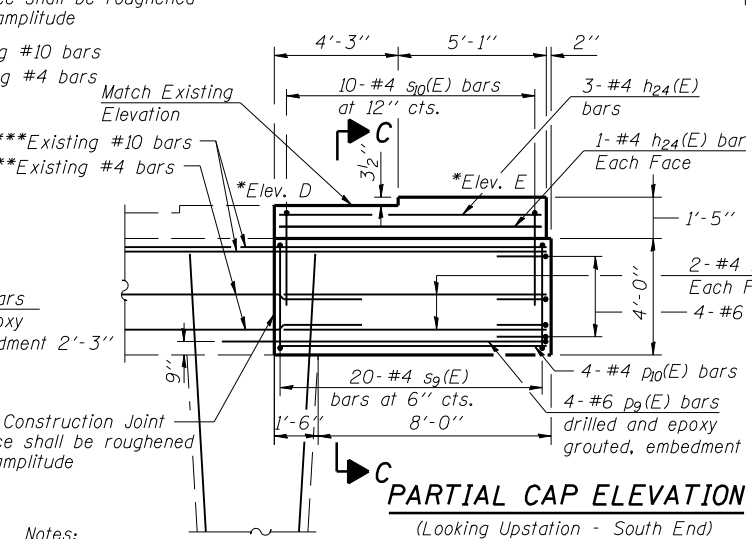
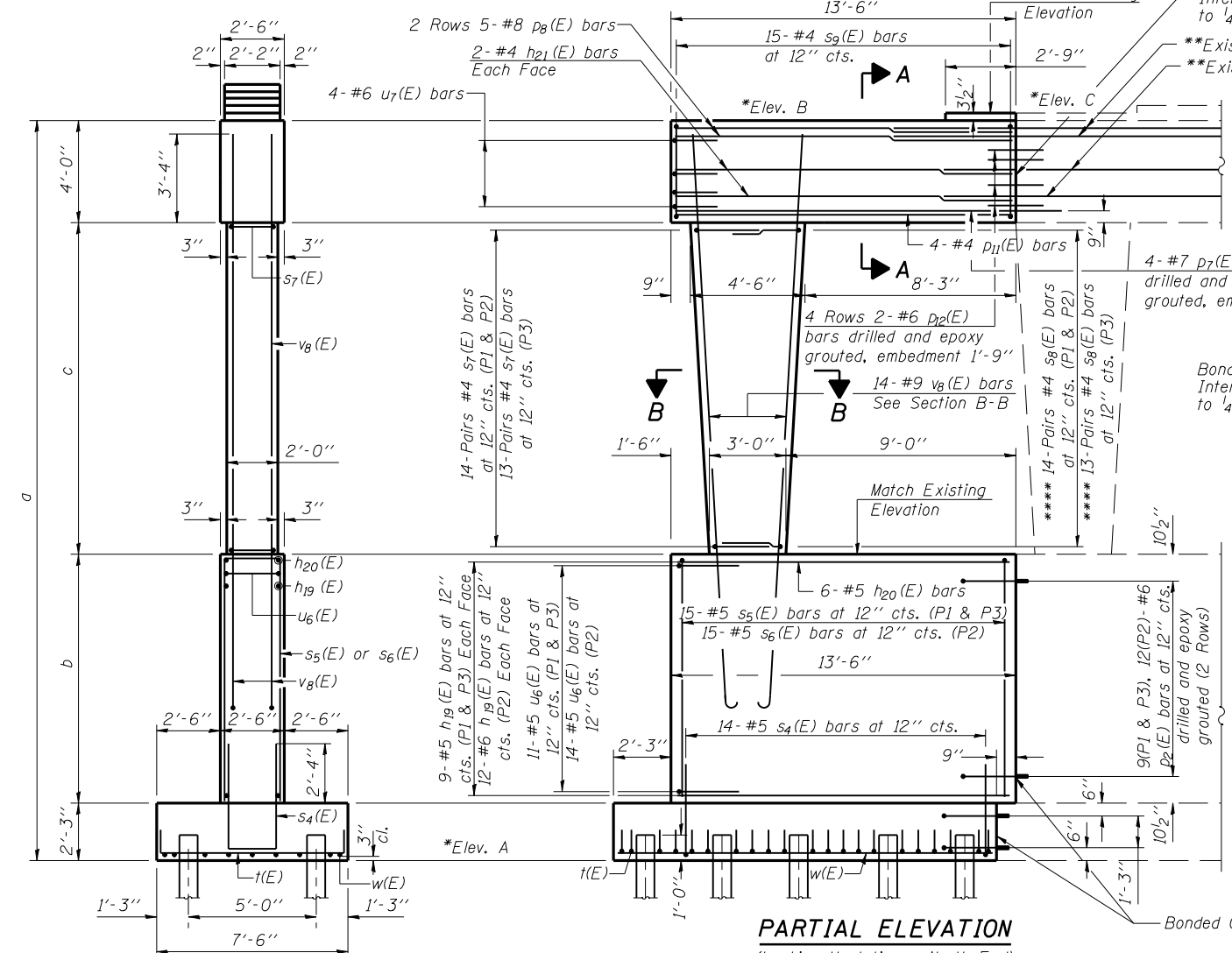
BAR s₈(E)



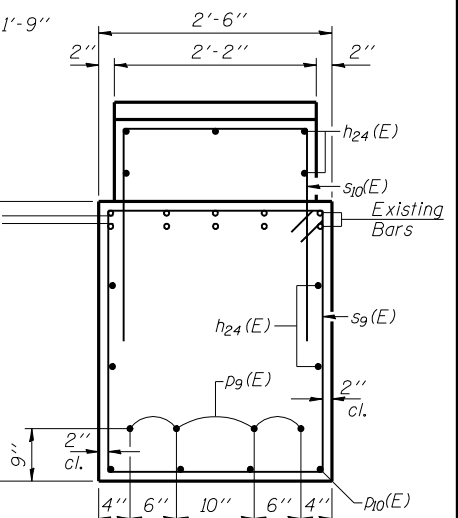
SECTION B-B

WESTBOUND PIERS 1-3 BILL OF MATERIAL

Bar	No.	Size	Length	Shape
h ₁₉ (E)	66	#5	13'-2"	—
h ₂₀ (E)	18	#5	13'-2"	—
h ₂₁ (E)	12	#4	13'-2"	—
h ₂₄ (E)	27	#4	9'-0"	—
p ₂ (E)	102	#6	2'-10"	U
p ₇ (E)	12	#7	15'-7"	—
p ₈ (E)	30	#8	13'-2"	—
p ₉ (E)	12	#6	11'-1"	—
p ₁₀ (E)	12	#4	9'-2"	—
p ₁₁ (E)	12	#4	13'-2"	—
p ₁₂ (E)	24	#6	3'-6"	—
s ₄ (E)	42	#5	10'-10"	U
s ₅ (E)	30	#5	21'-0"	U
s ₆ (E)	15	#5	27'-0"	U
s ₇ (E)	82	#4	7'-4"	U
s ₈ (E)	82	#4	2'-5"	U
s ₉ (E)	105	#4	12'-5"	U
s ₁₀ (E)	30	#4	7'-0"	U
t(E)	63	#7	9'-4"	U
u ₆ (E)	36	#5	6'-5"	U
u ₇ (E)	24	#6	7'-3"	U
v ₈ (E)	42	#9	23'-4"	U
w(E)	27	#5	14'-6"	—



SECTION A-A



SECTION C-C

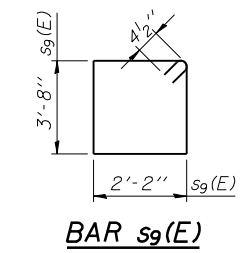
Notes:
 Space reinforcement in cap to miss anchor bolts. Four steps monolithically with cap. Reinforcement bars designated (E) shall be Epoxy Coated. Abbreviation P1 etc., indicates Pier #1.
 *Elevations given are from existing plans, and have been adjusted by deducting 0.69'. The comparison data is based on a survey of the existing bearing seats, and is subject to normal construction tolerance variations.
 **Salvage existing reinforcement bars. Cut as required to provide min. lap with new pier cap reinforcement bars. Bars damaged or not salvaged shall be replaced with either drilled and epoxy grouted bars or IDOT approved mechanical bar splicers as directed by the Engineer. No additional compensation will be allowed for either method.
 ***Salvage existing reinforcement bars full length. Bars damaged or not salvaged shall be replaced with either drilled and epoxy grouted bars or IDOT approved mechanical bar splicers as directed by the Engineer. No additional compensation will be allowed for either method.
 ****Alternate placement of 90° hooks in each column face, in each vertical line of s₈(E) bars.
 Drill holes for epoxy grouted bars to miss existing reinforcement.

DIMENSIONS & ELEVATIONS

Description	Pier #1	Pier #2	Pier #3
a	29'-0"	31'-6"	28'-3"
b	9'-9"	12'-9"	9'-9"
c	13'-0"	12'-6"	12'-3"
d	5'-3 ⁵ / ₈ "	5'-4 ¹ / ₄ "	5'-5"
e	7'-3 ¹ / ₂ "	7'-4 ³ / ₈ "	7'-5 ³ / ₈ "
f	7'-3 ³ / ₈ "	7'-4 ¹ / ₈ "	7'-5 ¹ / ₈ "
Elev. A	598.29	595.93	599.09
Elev. B	627.29	627.43	627.34
Elev. C	627.58	627.72	627.63
Elev. D	628.42	628.56	628.47
Elev. E	628.71	628.85	628.76

MIN. BAR LAPS

- #4 Bar - 1'-8"
- #5 Bar - 2'-2"
- #6 Bar - 2'-7"
- #8 Bar - 4'-6"

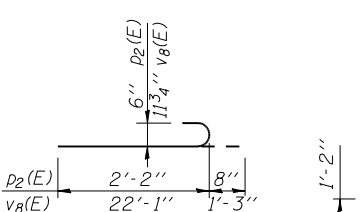


BAR s₉(E)

ANCHOR BOLT LAYOUT DIMENSIONS

Beam No.	Pier 1-A	Pier 1-B	Pier 2-A	Pier 2-B	Pier 3-A	Pier 3-B
1	3 ¹⁵ / ₁₆ "	7 ¹ / ₄ "	4 ¹ / ₆ "	7 ¹ / ₄ "	4 ³ / ₁₆ "	7 ¹ / ₈ "
2	3 ⁷ / ₈ "	7 ¹ / ₄ "	4"	7 ¹ / ₄ "	4 ¹ / ₂ "	7 ¹ / ₈ "
7	3 ⁷ / ₈ "	7 ¹ / ₄ "	4"	7 ¹ / ₄ "	4 ¹ / ₂ "	7 ¹ / ₈ "

END VIEW

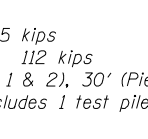


BARS p₂(E) & v₈(E)

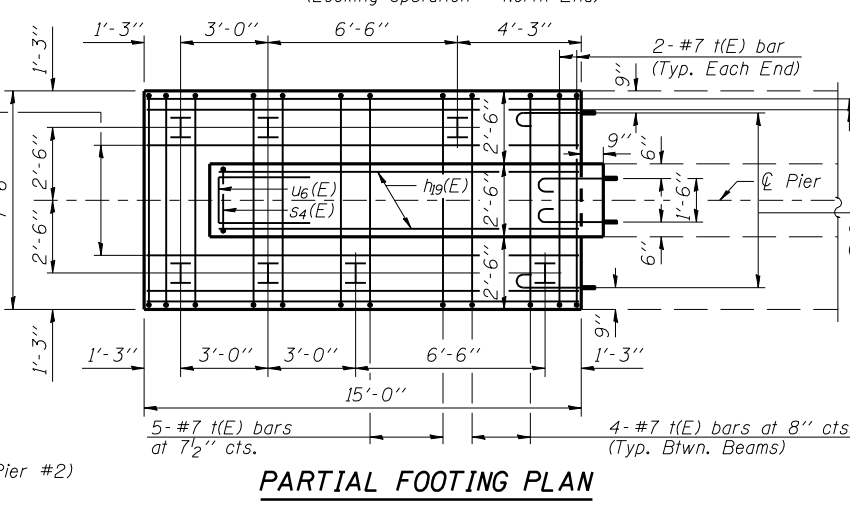
PILE DATA

Pile Type: HP10x42
 Nominal Required Bearing: 335 kips
 Allowable Resistance Available: 112 kips
 Estimated Length: 25' (Piers 1 & 2), 30' (Pier 3)
 No. Required: 7 (per pier, includes 1 test pile at Pier #2)
 Test Pile: 1 (at Pier #2)

BAR t(E)



PARTIAL FOOTING PLAN



s:FILE# 12/16/2006
 LAYOUT 06/27/03
 DRAWN 07/17/03
 REVIEWED JMM 10/27/03

Corporate License Number 184-001-084

WESTBOUND PIERS 1-3
 F.A.I. 72 OVER UNION PACIFIC RAILROAD
 SECTION (84-9-4)A, HBK, BY, BY-1
 SANGAMON COUNTY
 STATION 608+51.98
 STR NO. 084-0074 EB - 084-0075 WB

© Copyright Hanson Professional Services Inc. SMS_YEARS

 JOB# 96S2002B
 DATE 01/12/06