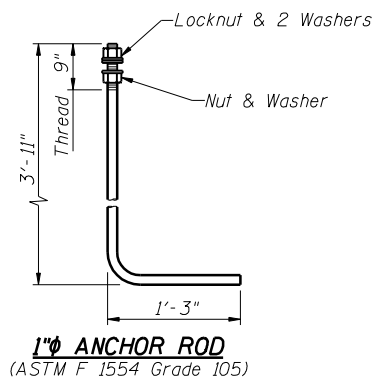
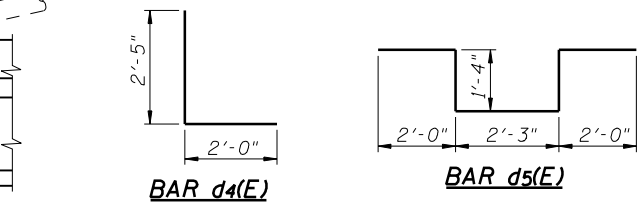
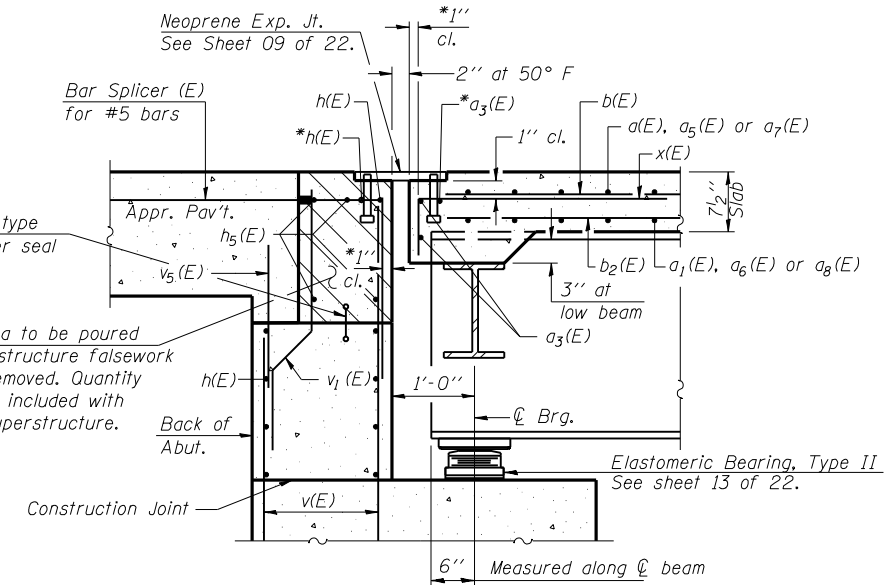


- Lighting Notes:
- The cost of anchor rods and conduit is included with Concrete Superstructure.
  - The Contractor shall verify the bolt circle with the light pole supplier.



SECTION B-B

LIGHT PEDESTAL DETAILS



\*Place  $a_3(E)$  and  $h(E)$  bars in back of anchor bolt as shown if required to maintain 1" cl. (+0- $\frac{1}{8}$ "). Anchor bolts should be tied to  $a_3(E)$  and  $h(E)$  bars.

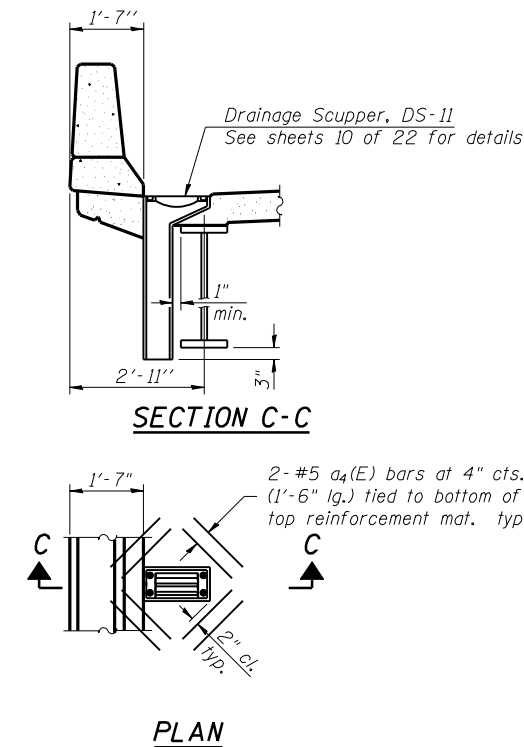
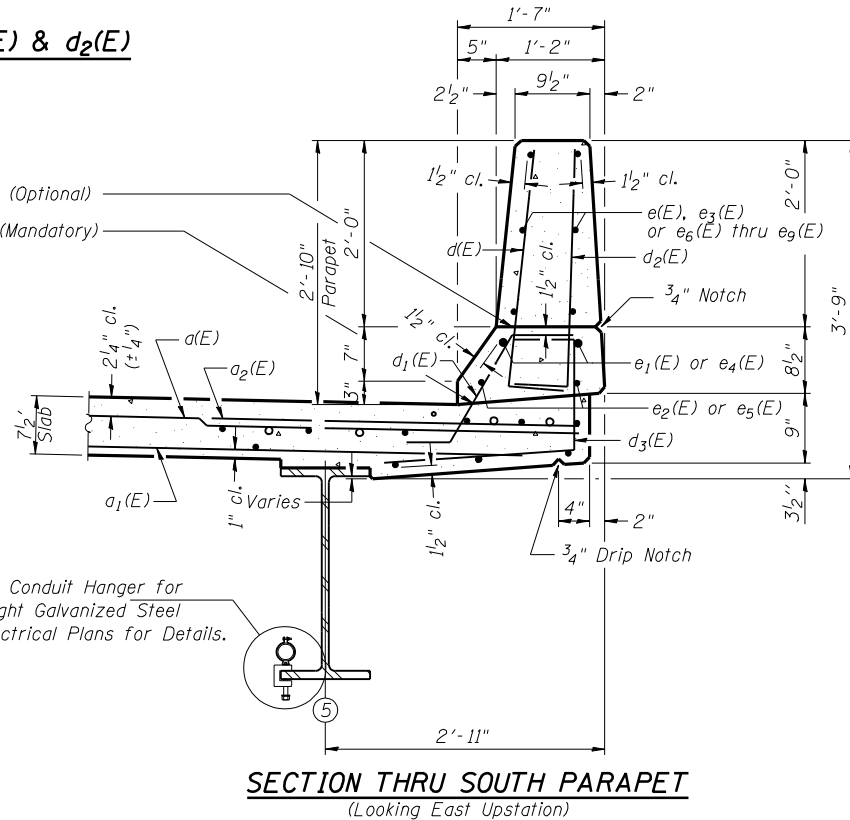
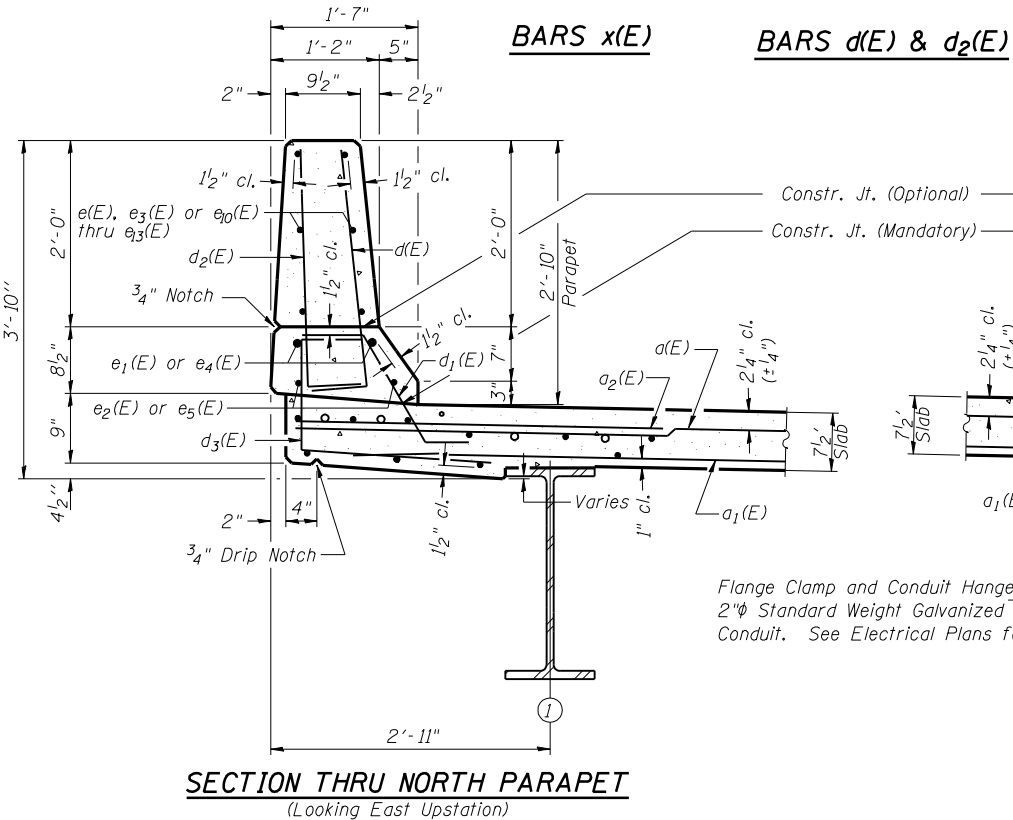
**SUPERSTRUCTURE BILL OF MATERIAL**

Bar	No.	Size	Length	Shape
$d(E)$	449	#5	28'-6"	—
$a_1(E)$	337	#5	27'-9"	—
$a_2(E)$	496	#6	4'-6"	—
$a_3(E)$	8	#5	22'-0"	—
$a_4(E)$	8	#5	2'-6"	—
$a_5(E)$	25	#5	28'-11"	—
$a_6(E)$	19	#5	28'-5"	—
$a_7(E)$	21	#5	28'-7"	—
$a_8(E)$	15	#5	29'-7"	—
$b(E)$	396	#5	28'-0"	—
$b_1(E)$	90	#6	48'-0"	—
$b_2(E)$	338	#5	26'-0"	—
$d_1(E)$	676	#5	3'-0"	—
$d_2(E)$	676	#4	3'-0"	—
$d_3(E)$	676	#4	3'-10"	—
$d_4(E)$	3	#6	4'-5"	—
$d_5(E)$	5	#6	8'-11"	—
$e(E)$	144	#4	14'-6"	—
$e_1(E)$	32	#8	34'-0"	—
$e_2(E)$	32	#5	32'-10"	—
$e_3(E)$	72	#4	10'-6"	—
$e_4(E)$	24	#8	10'-6"	—
$e_5(E)$	24	#5	10'-6"	—
$e_6(E)$	6	#4	17'-4"	—
$e_7(E)$	6	#4	16'-5"	—
$e_8(E)$	6	#4	19'-3"	—
$e_9(E)$	6	#4	14'-8"	—
$e_{10}(E)$	6	#4	14'-2"	—
$e_{11}(E)$	6	#4	18'-4"	—
$e_{12}(E)$	6	#4	15'-7"	—
$e_{13}(E)$	6	#4	16'-8"	—
$x(E)$	66	#5	4'-1"	—
Concrete Superstructure		Cu. Yds.	296.8	
Reinforcement Bars (Epoxy Coated)		Lbs.	70910	

Notes:  
Reinforcement bars designated (E) shall be epoxy coated.  
Cut longitudinal reinforcement to clear drainage scuppers.

**MIN. BAR LAPS**

- #4 Bar - 1'-8"
- #5 Bar - 2'-2"
- #6 Bar - 2'-7"
- #8 Bar - 4'-6"



**SUPERSTRUCTURE DETAILS**  
I-72/MACARTHUR BLVD. RAMP B OVER UPRR  
SECTION (84-9-4)A, HBK, BY, BY-1  
SANGAMON COUNTY  
STATION 33+95.61  
STRUCTURE NUMBER 084-0514

© Copyright Hanson Professional Services Inc. \$MS\_YEAR\$ 2007



96S2002B

DATE: 11/16/05

LAYOUT	MM	06/27/03
DRAWN	DAP	01/04/05
REVIEWED	JMM	02/24/05

sFILES\*  
12/16/2006