

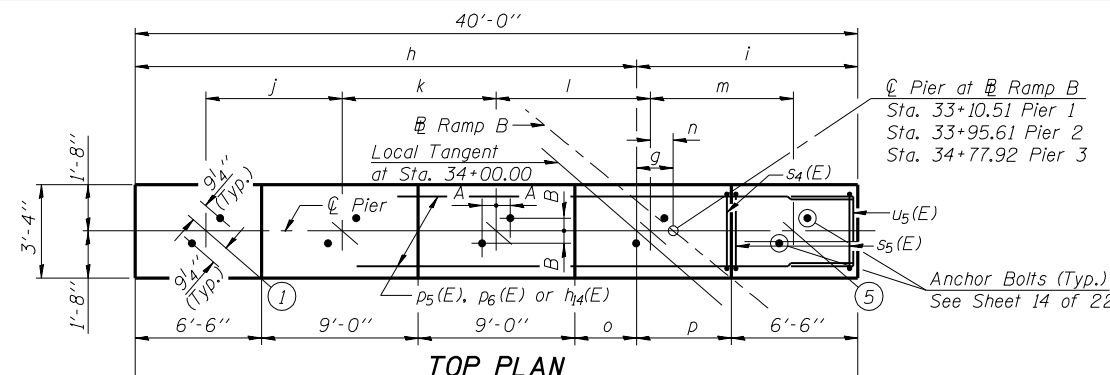
Notes: Space Reinforcement in cap to miss anchor bolts.
 Four steps monolithically with cap.
 B indicates battered pile and arrow indicates direction to batter the pile.
 Reinforcement Bars designated (E) shall be epoxy coated.
 Bars indicated thus 5x2-#5 etc. indicates 5 line of bars with 2 lengths per line.

ANCHOR BOLT LAYOUT DIMENSIONS

Beam No.	Pier 1 - A	Pier 1 - B	Pier 2 - A	Pier 2 - B	Pier 3 - A	Pier 3 - B
1	5' 7/8"	7' 8"	6' 8"	6' 5/16"	6' 5/16"	6' 3/4"
2	5' 7/8"	7' 8"	6' 1/16"	6' 5/16"	6' 5/16"	6' 13/16"
3	5' 7/8"	7' 8"	6' 1/16"	7"	6' 4"	6' 13/16"
4	5' 7/8"	7' 3/16"	6' 1/16"	7"	6' 4"	6' 13/16"
5	5' 13/16"	7' 3/16"	6' 1/16"	7"	6' 4"	6' 13/16"

DIMENSIONS

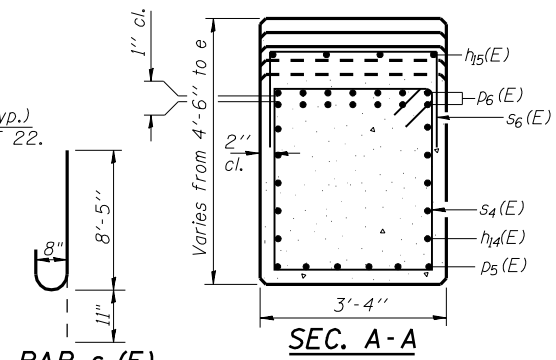
Description	Pier #1	Pier #2	Pier #3
Elev. A	628.58	629.29	629.61
Elev. B	628.30	629.02	629.38
Elev. C	628.01	628.76	629.14
Elev. D	627.72	628.49	628.90
Elev. E	627.43	628.22	628.66
Elev. F	595.43	596.22	596.66
a	3' 3/8"	3' 4"	2' 3/4"
b	3' 1/2"	3' 4"	2' 7/8"
c	3' 1/2"	3' 4"	2' 7/8"
d	3' 1/2"	3' 8"	2' 7/8"
e	5' -7' 7/8"	5' -6' 7/8"	5' -5' 3/8"
f	33' -1' 7/8"	33' -0' 7/8"	32' -11' 3/8"
g	2' -1' 1/4"	0' -0' 1/16"	1' -7' 1/8"
h	28' -10' 5/8"	30' -7' 3/8"	28' -8' 3/8"
i	11' -1' 3/8"	9' -4' 5/8"	11' -3' 5/8"
j	9' -1' 13/16"	8' -10' 1/8"	8' -6' 7/8"
k	9' -2' 1/8"	8' -10' 3/8"	8' -7' 1/8"
l	9' -2' 7/16"	8' -10' 1/16"	8' -7' 3/8"
m	9' -2' 3/4"	8' -11"	8' -7' 5/8"
n	1' -10' 1/8"	1' -9' 3/8"	1' -8' 1/16"
o	4' -4' 5/8"	6' -1' 3/8"	4' -2' 3/8"
p	4' -7' 3/8"	2' -10' 5/8"	4' -9' 5/8"
q	21' -1' 5/8"	22' -10' 3/8"	20' -11' 3/8"
r	3' -4' 3/8"	1' -7' 5/8"	3' -6' 5/8"



MIN. BAR LAPS

- #4 Spirals - 2'-0"
- #5 Bar - 2'-2"
- #6 Bar - 2'-7"
- #8 Bar - 4'-6"
- #10 Bar - 7'-3"

ROUTE NO.	SECTION	COUNTY	SHEET NO.	SHEET NO.
FAI 72		SANGAMON	559	316
FAU 8021		ILLINOIS		22 SHEETS
FED. ROAD DIST. NO. 7		FED. AID PROJECT		Contract No. 72541
(84-9-4)A, HBK, BY, BY-1				



BILL OF MATERIAL PIERS 1-3

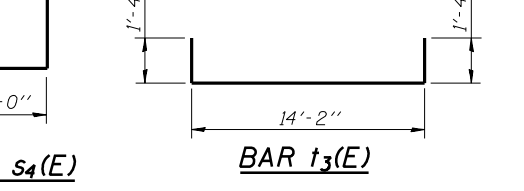
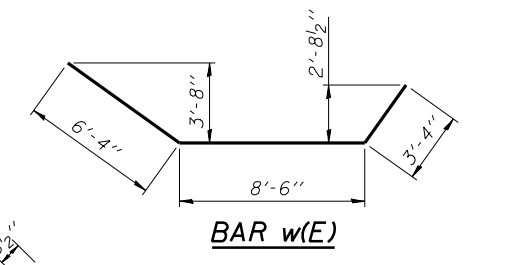
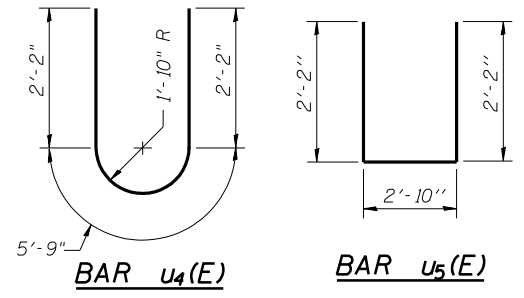
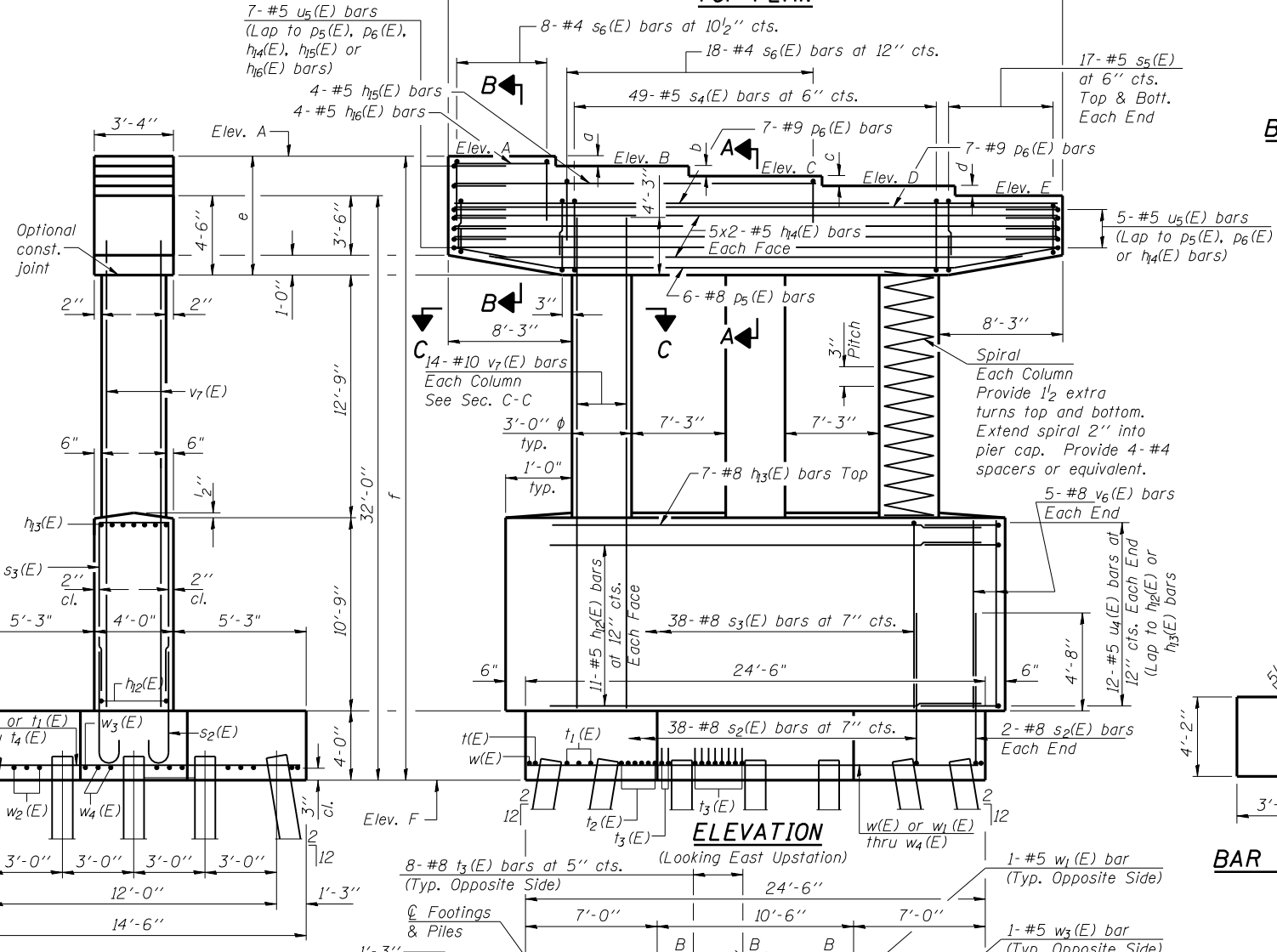
Bar	No.	Size	Length	Shape
h2(E)	66	#5	21'-6"	—
h3(E)	21	#8	21'-6"	—
h4(E)	60	#5	21'-0"	—
h5(E)	12	#5	24'-2"	—
h6(E)	12	#5	6'-4"	—
p5(E)	18	#8	39'-8"	—
p6(E)	42	#9	39'-8"	—
s2(E)	240	#8	9'-4"	U
s3(E)	114	#8	24'-6"	U
s4(E)	147	#5	15'-3"	U
s5(E)	204	#5	9'-4"	U
s6(E)	78	#4	8'-10"	U
sp(E)	9	#4	12'-11"	W
t(E)	6	#8	5'-0"	—
t1(E)	9	#8	16'-0"	—
t2(E)	18	#8	24'-10"	—
t3(E)	60	#8	16'-10"	—
u4(E)	72	#5	10'-1"	U
u5(E)	36	#5	7'-2"	U
v6(E)	30	#8	10'-5"	—
v7(E)	126	#10	27'-9"	—
w(E)	12	#5	18'-2"	—
w1(E)	6	#5	11'-9"	—
w2(E)	9	#5	35'-3"	—
w3(E)	6	#5	23'-6"	—
w4(E)	12	#5	24'-2"	—
Structure Excavation		Cu. Yd.	346.3	
Concrete Structures		Cu. Yd.	55270	
Reinforcement Bars, Epoxy Coated		Pound	55280	
Furnishing Steel Piles HP10x57		Foot	840	
Driving Piles		Foot	840	
Test Piles Steel HP10x57		Each	3	

** Length shown is height of spiral.

Corporate License Number 184-001-084

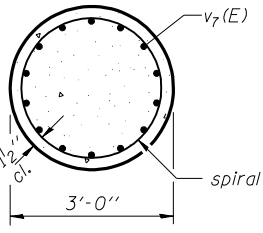
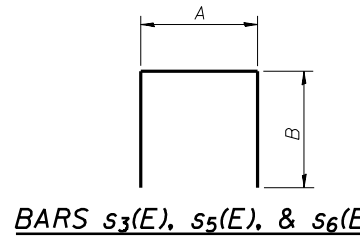
PIERS 1-3
 I-72/MACARTHUR BLVD. RAMP B OVER UPRR
 SECTION (84-9-4)A, HBK, BY, BY-1
 SANGAMON COUNTY
 STATION 33+95.61
 STRUCTURE NUMBER 084-0514

© Copyright Hanson Professional Services Inc. \$MS_YEAR\$ 96S2002B
HANSON
 DATE: 11/16/05

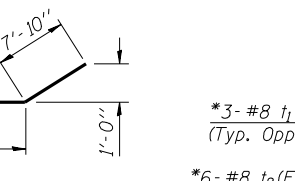


A & B DIMENSIONS

Bar	A	B
s3(E)	3'-8"	10'-5"
s5(E)	3'-0"	3'-2"
s6(E)	3'-0"	2'-11"



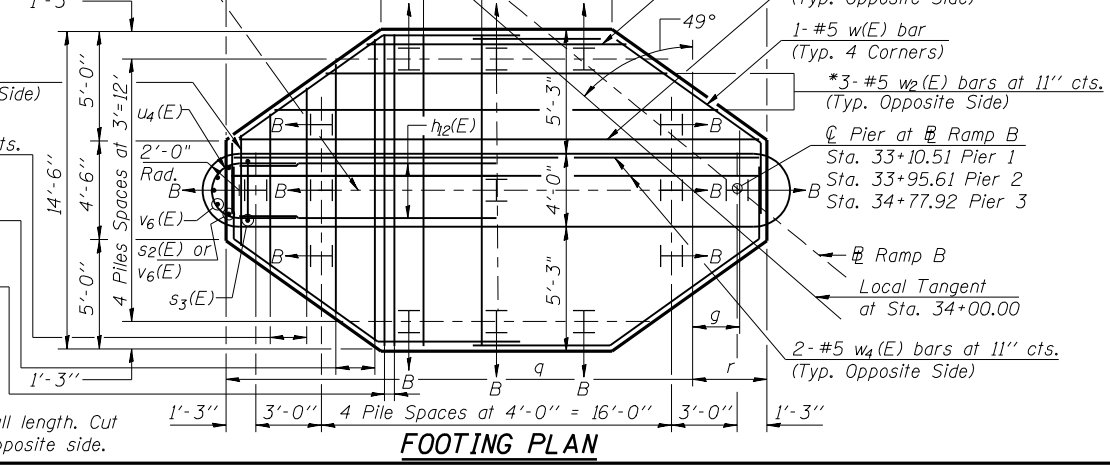
END VIEW



PILE DATA

Type: Steel Piles HP10x57
 Nominal Required Bearing: 454 kips
 Allowable Resistance Available: 131 kips (Pier #1 & #3)
 151 kips (Pier #2)
 Est. Length: 21' Pier #1, 20' Pier #2 and 19' Pier #3
 No. Required: 15 per pier (Includes 1 Test Pile per pier)

*Order w2(E), t1(E) and t2(E) bars full length. Cut to fit and use remainder of bar in opposite side.



MMW 06/27/03
 DRAWN 01/04/05
 REVIEWED 02/24/05
 \$FILE\$ 12/16/2006