

*(84-9-4)A,HBK,BY,BY-1 Contract No 72541

Joint Size	"C" at 50°F	"D" at 50°F
2"	2"	1 1/2" Min.
2 1/2"	2 1/2"	1 3/4" Min.
4"	3"	2 1/2" Min.

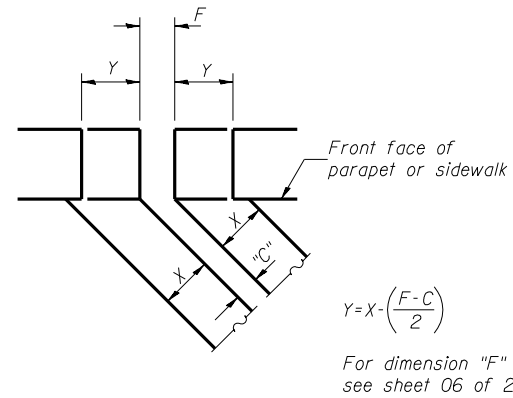
INSTALLATION NOTES

- Install continuous seal in roadway, parapet, curb, and sidewalk.
- Install anchor blocks as indicated.

NOTE A: Maximum spacing of anchor bolts shall be 12" centers.

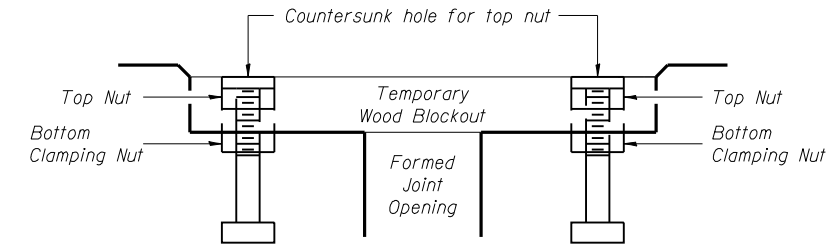
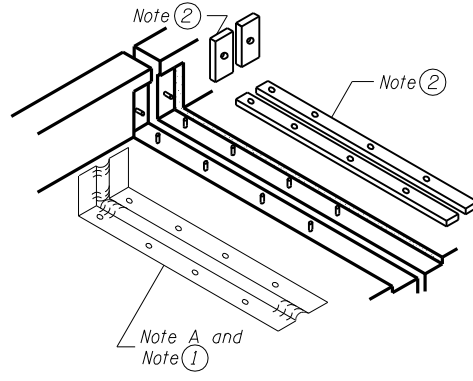
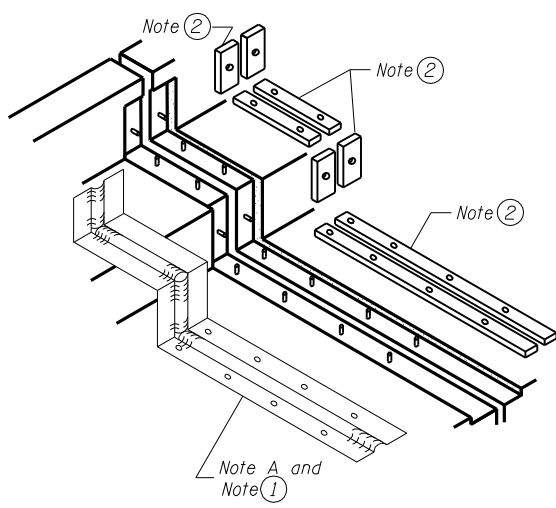
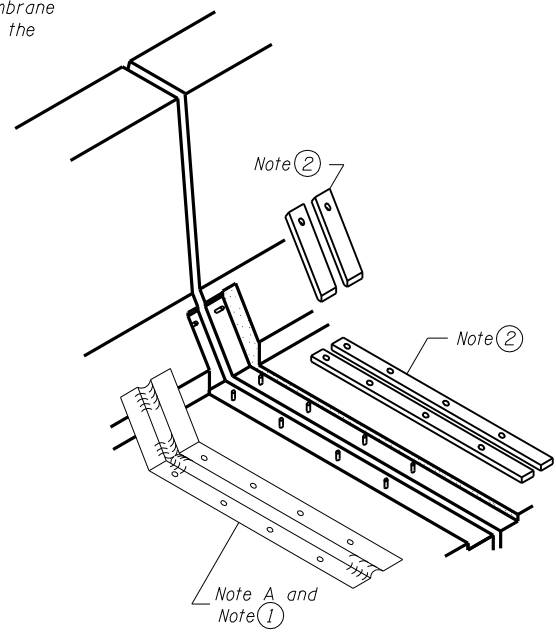
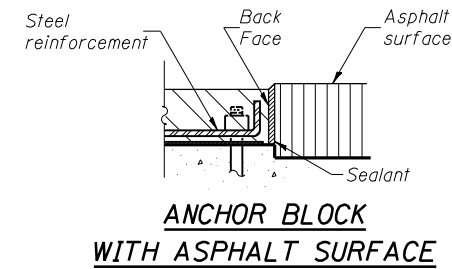
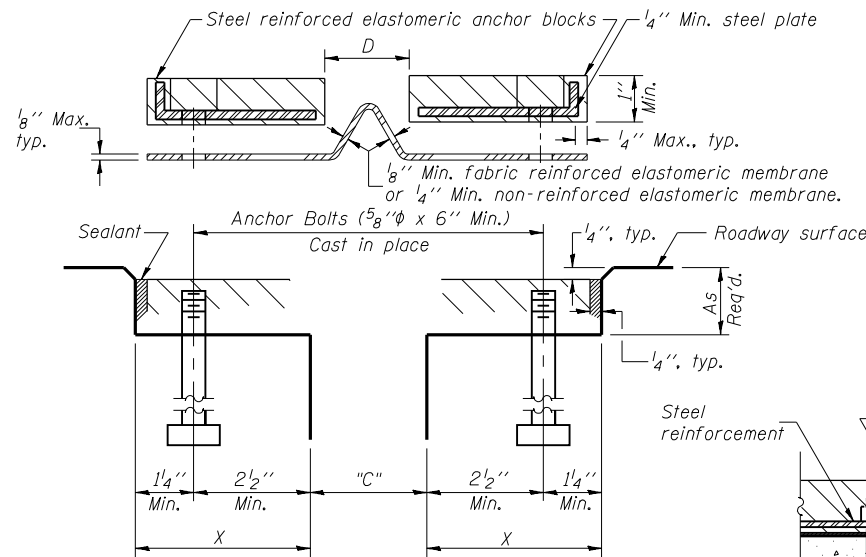
SKEW LIMITATIONS

The details of the anchor blocks and the elastomeric membrane in the parapet, as shown, are for up to 50° skews. For skews greater than 50°, the anchor blocks and the elastomeric membrane, installed according to dimension "D", might require modifications to insure a minimum clearance of 1/2" from centerline of anchor studs to edge of parapet opening. The anchor blocks and the elastomeric membrane shall also be installed to the top of the parapet with the anchor studs spaced at ±12" cts.



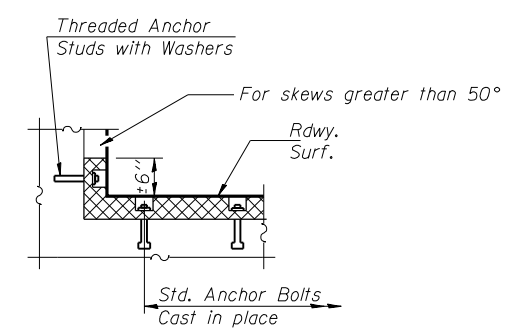
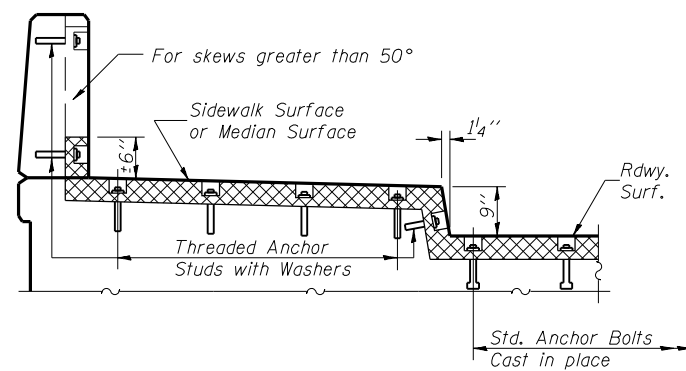
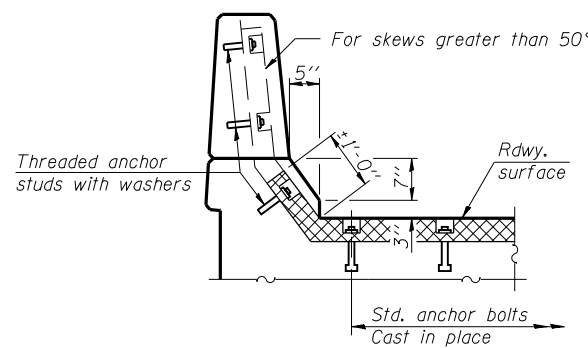
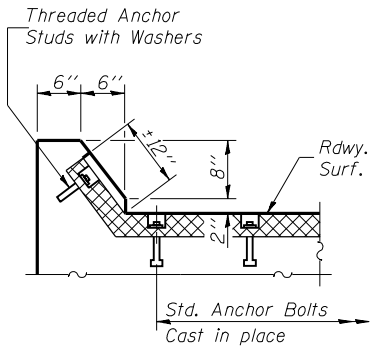
$$Y = X \cdot \left(\frac{F - C}{2} \right)$$

For dimension "F" see sheet 06 of 21.



Note: Stud needs to be threaded lower to allow for use of clamping nut.

Anchor studs should be stainless



TYPICAL END TREATMENTS

Corporate License Number 184-001-084

NEOPRENE EXPANSION JOINT DETAILS
 I-72/MACARTHUR BLVD. RAMP C OVER UPRR
 SECTION (84-9-4)A,HBK,BY,BY-1
 SANGAMON COUNTY
 STATION 46+01.97
 STRUCTURE NUMBER 084-0516

© Copyright Hanson Professional Services Inc. \$MS_YEAR\$



JOB# 96S2002B
 DATE 11/16/05

LAYOUT 06/27/03
 DRAWN 01/04/05
 REVIEWED JMM 02/24/05
 \$FILE\$ 12/16/2006