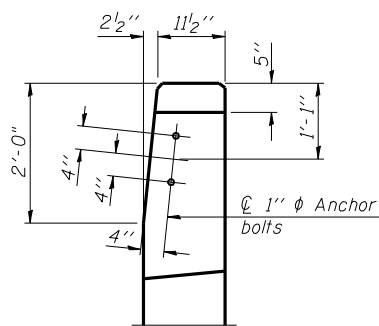
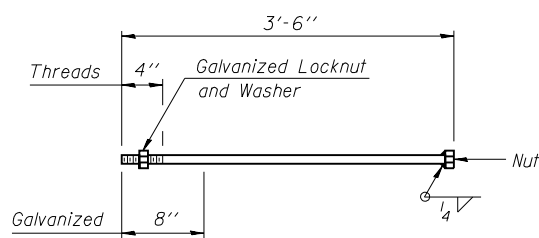


WING WALL ELEVATION
Showing Dimensions

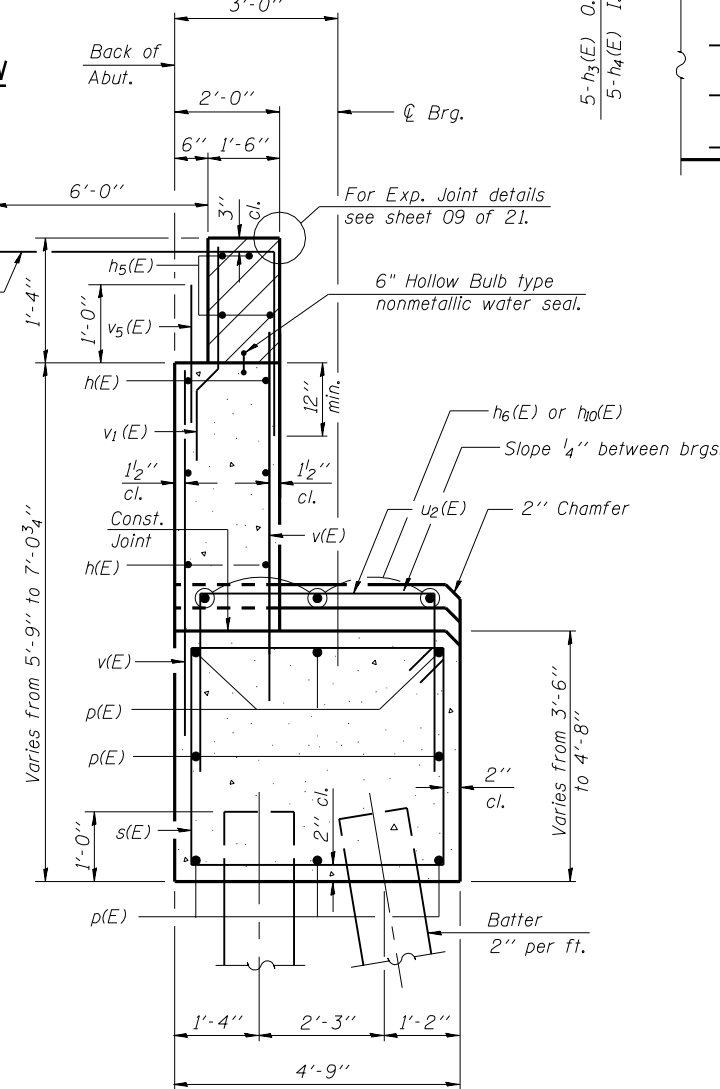


VIEW A-A



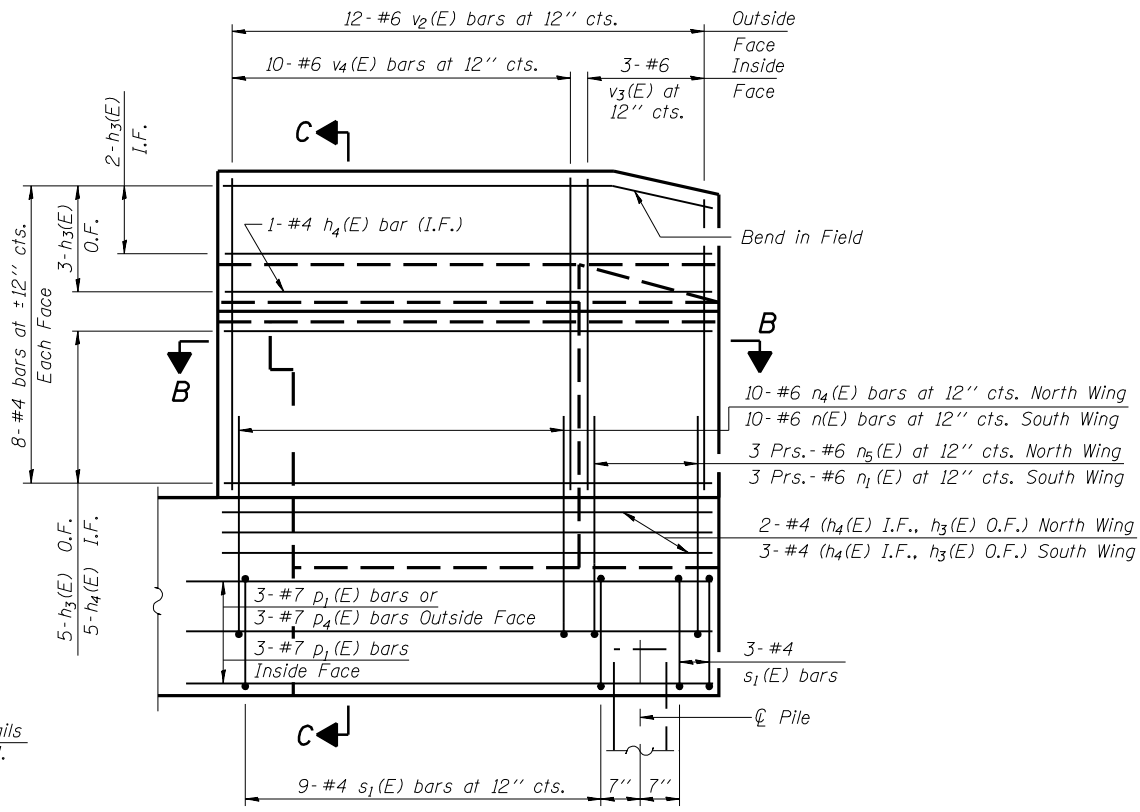
1" diameter anchor bolt

**Bar splicer (E) for #5 bars

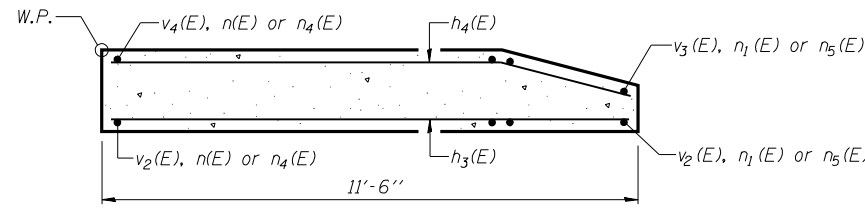


SEC. THRU ABUT.

**Alternate with #4 v(E) bars
Place parallel to the beams



WING WALL ELEVATION
Showing Reinforcement

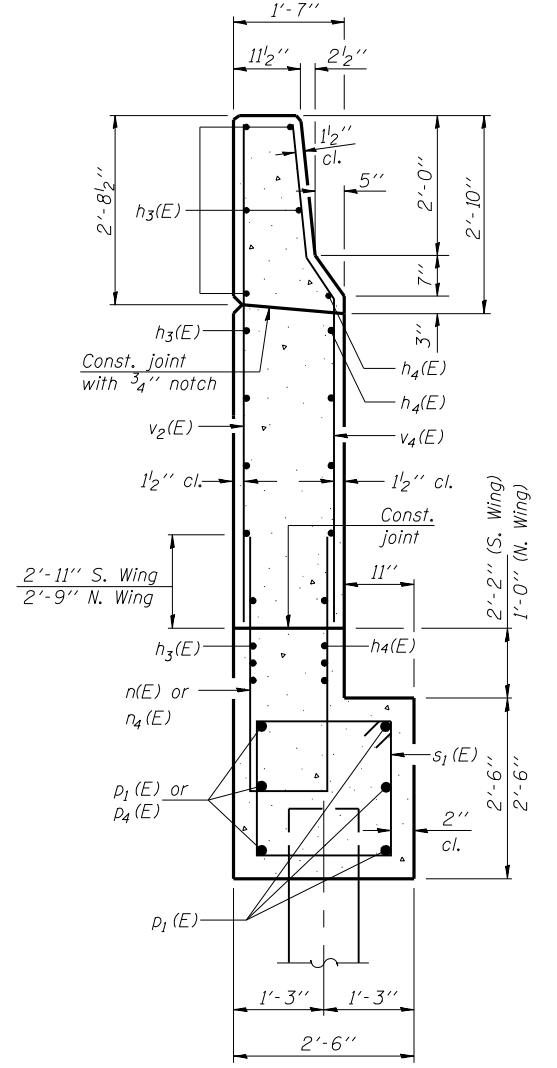


SEC. B-B

Notes:
Hatched area to be poured after superstructure forms have been removed. Quantity of concrete included with Concrete Superstructure.
Space reinforcement in cap to miss anchor bolts.
Pour steps monolithically with cap.
Reinforcement bars designated (E) shall be epoxy coated.
Quantity of concrete in end post included with Concrete Superstructure on sheet 08 of 21.
Conduit is embedded in the North Wing. For details, see Conduit Details sheet in the Roadway plans.

MIN. BAR LAPS

- #4 Bar - 1'-8"
- #5 Bar - 2'-2"
- #6 Bar - 2'-7"
- #7 Bar - 3'-5"



SECTION C-C

LAYOUT	MMW	06/27/03
DRAWN	DAP	01/04/05
REVIEWED	JMM	02/24/05

s\$FILE\$ 12/16/2006

Corporate License Number 184-001-084

WEST ABUTMENT DETAILS
I-72/MACARTHUR BLVD. RAMP C OVER UPRR
SECTION (84-9-4)A,HBK,BY,BY-1
SANGAMON COUNTY
STATION 46+01.97
STRUCTURE NUMBER 084-0516

© Copyright Hanson Professional Services Inc. \$MS_YEAR\$ JOB# 96S2002B
 DATE# 11/16/05