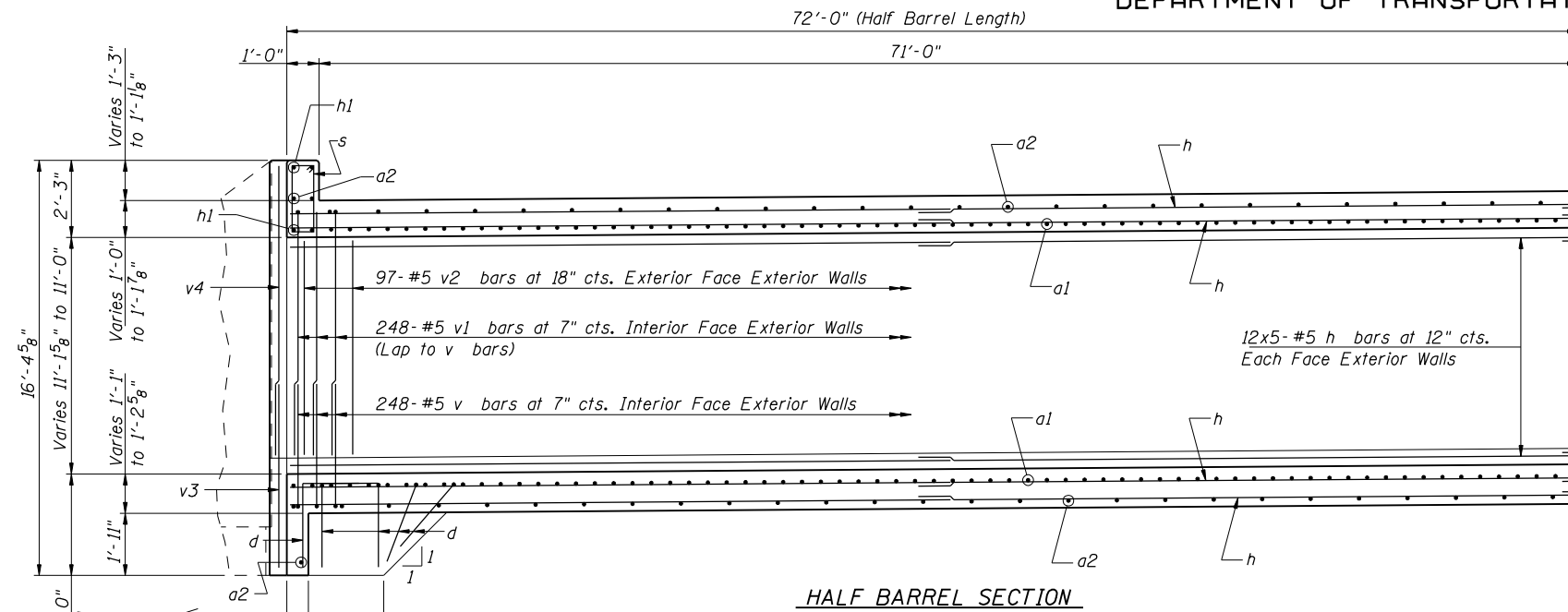


STATE OF ILLINOIS
DEPARTMENT OF TRANSPORTATION

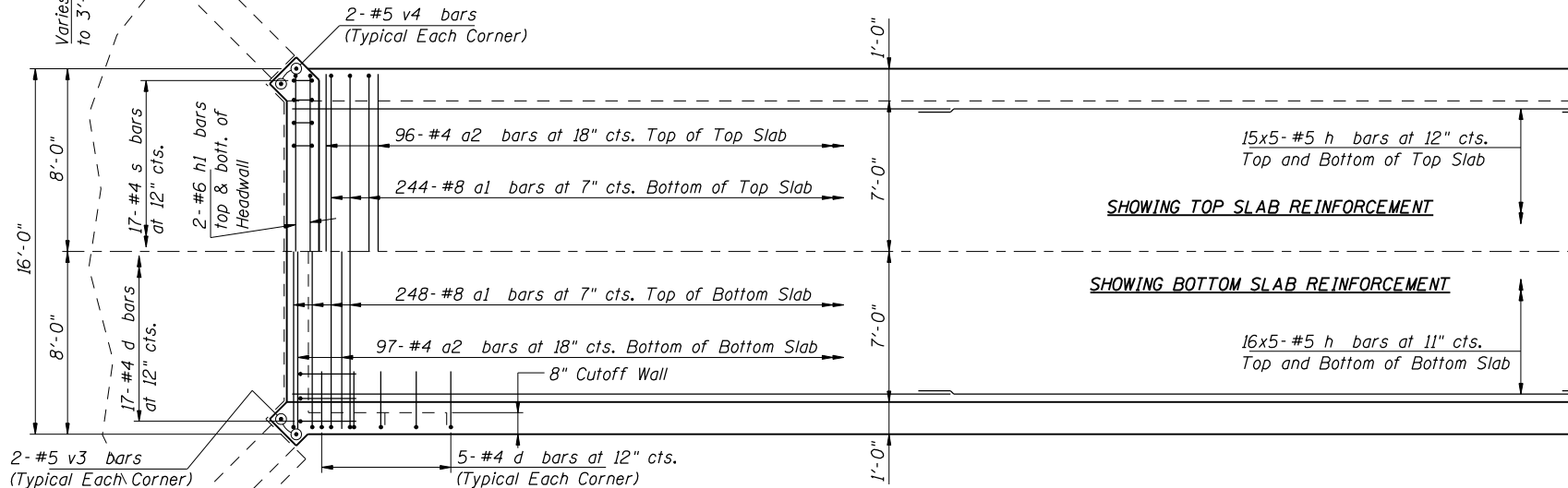
ROUTE NO.	SECTION	COUNTY	SHEET NO.	SHEET NO.
-	*	SANGAMON	559	346
FED. ROAD DIST. NO. 7		ILLINOIS	FED. AID PROJECT -	

SHEET NO. 2
3 SHEETS

*02-00382-02-PV CONTRACT NO. 72541

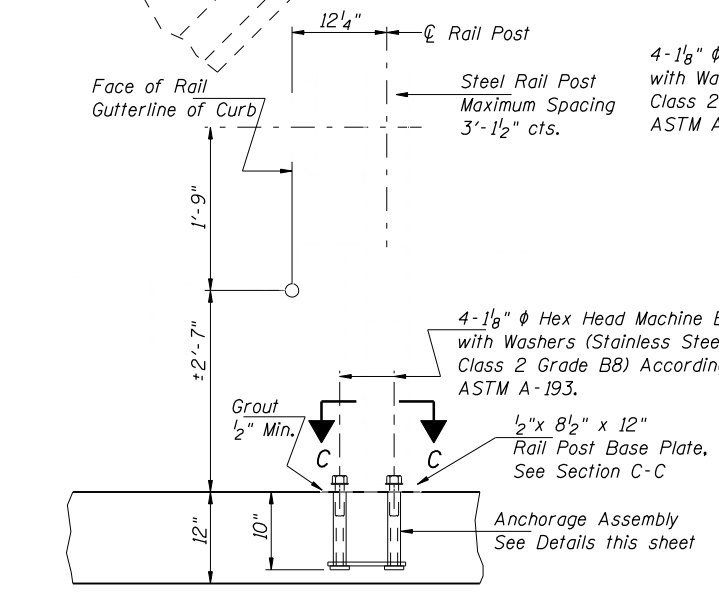


HALF BARREL SECTION

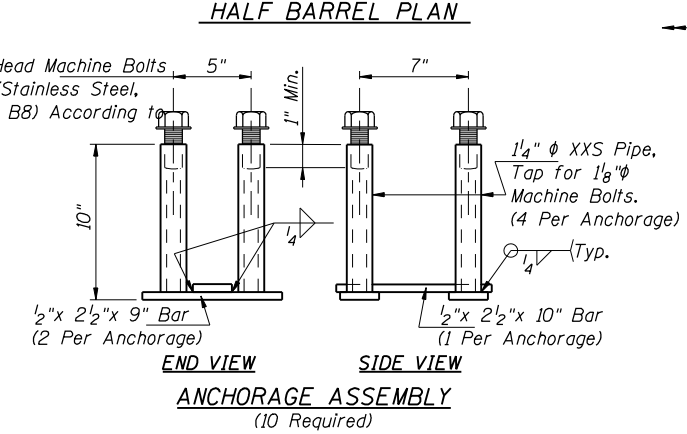


SHOWING TOP SLAB REINFORCEMENT

SHOWING BOTTOM SLAB REINFORCEMENT



TYPICAL SECTION thru GUARDRAIL

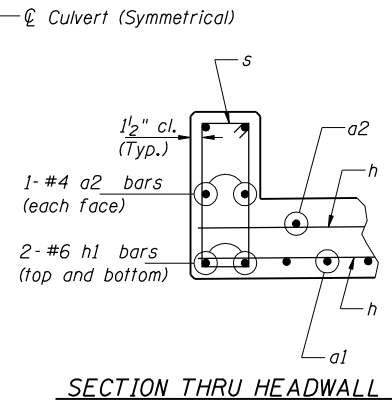


ANCHORAGE ASSEMBLY
(10 Required)

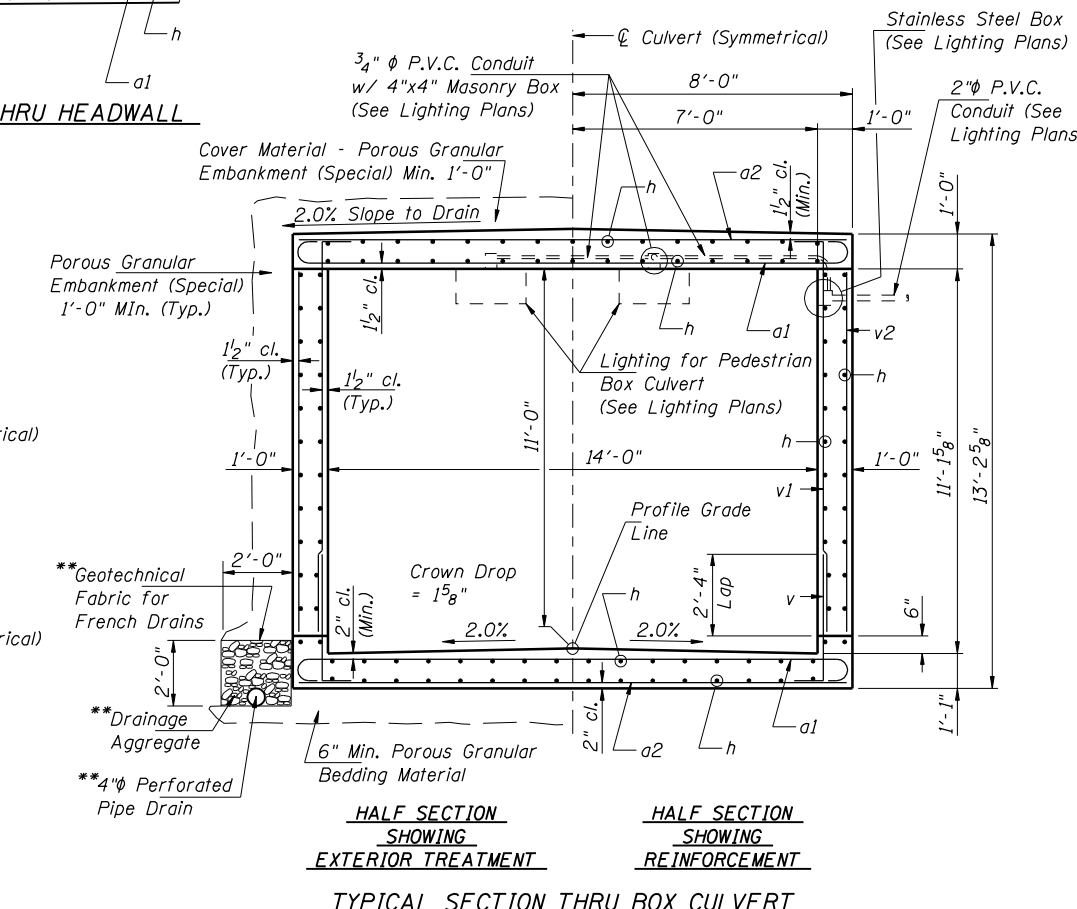
In lieu of the cast-in-place anchorage assembly shown, the Contractor has the option of drilling and epoxy grouting 1" anchor rods. Embedment shall be according to the manufactures specifications.

Cost of cast-in-place anchorage assemblies shall be included in the cost of Steel Plate Beam Guardrail, Attached to Structure.

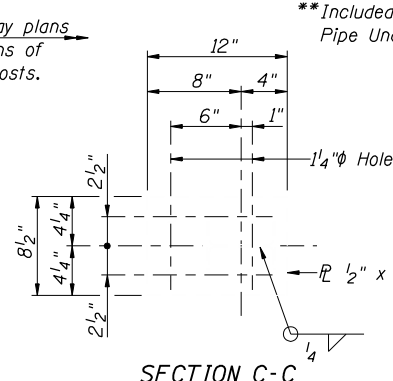
Pipe shall conform to the requirements of ASTM designation A53, Grade B. Steel shapes and plates shall conform to the requirements of AASHTO M270, Grade 36.



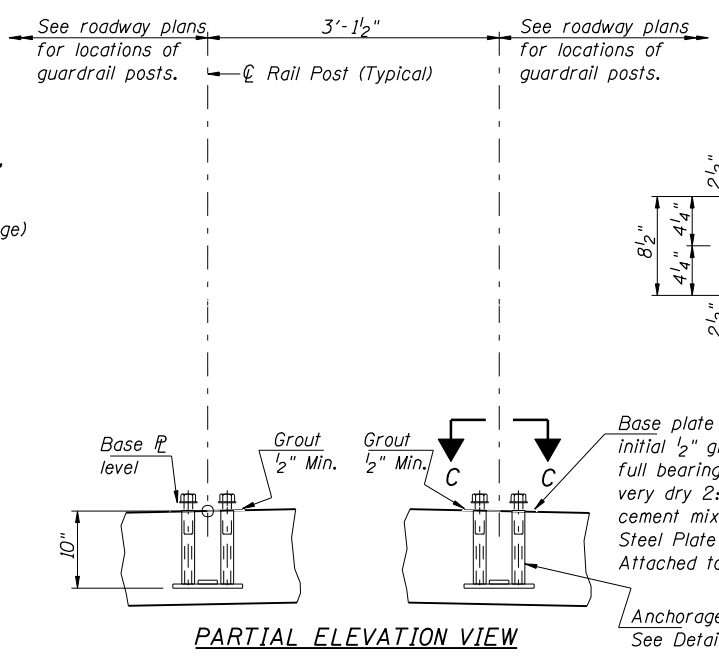
SECTION THRU HEADWALL



HALF SECTION SHOWING EXTERIOR TREATMENT
HALF SECTION SHOWING REINFORCEMENT
TYPICAL SECTION THRU BOX CULVERT



MINIMUM BAR LAPS
#5 Bar - 2'-2"



PARTIAL ELEVATION VIEW

PEDESTRIAN UNDERPASS - BARREL DETAILS
MacARTHUR BLVD. over INTERURBAN TRAIL
SECTION 02-00382-02-PV
SANGAMON COUNTY
STATION 810+50.00
STRUCTURE NO. 084-7009



12/16/2006
\$FILE\$
LAYOUT
DRAWN
REVIEWED