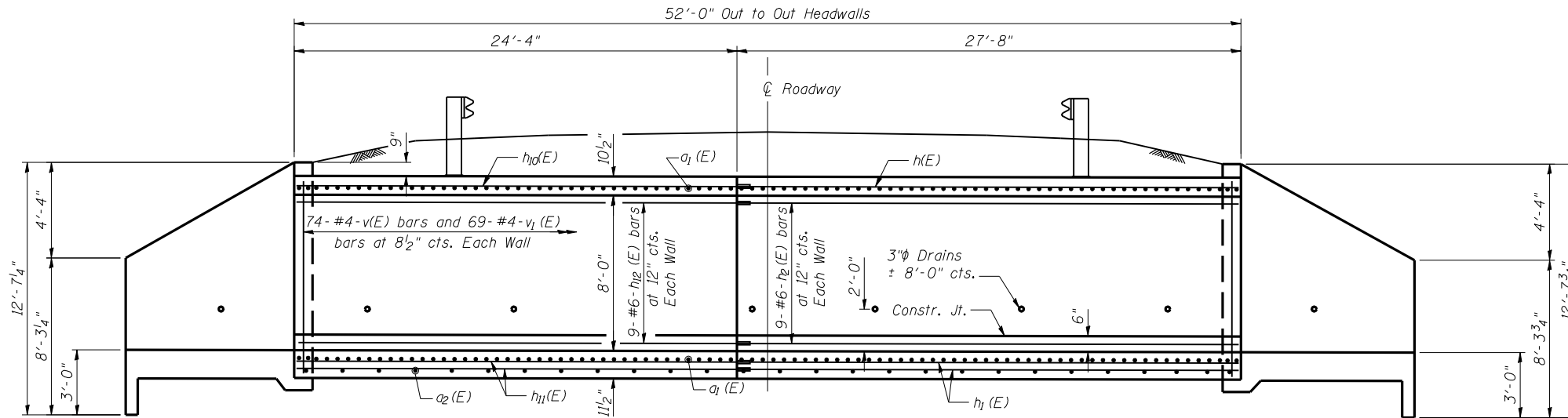


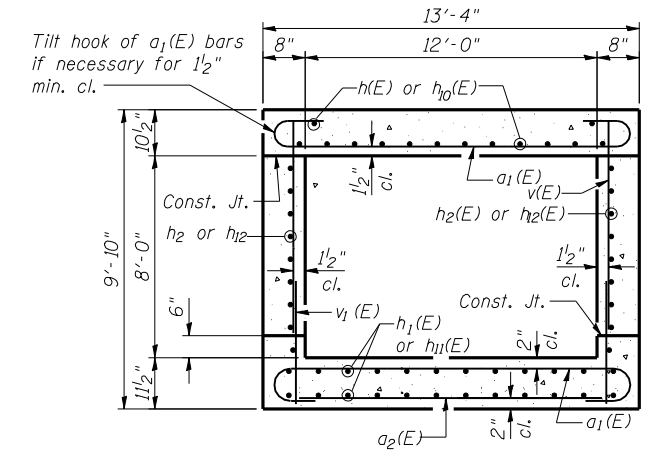
STATE OF ILLINOIS  
DEPARTMENT OF TRANSPORTATION

ROUTE NO.	SECTION	COUNTY	TOTAL SHEETS	SHEET NO.
US 67	115RS-3, B-2	MORGAN	42	29
FED. ROAD DIST. NO. 6		ILLINOIS	FED. AID PROJECT - ROUTE 310	

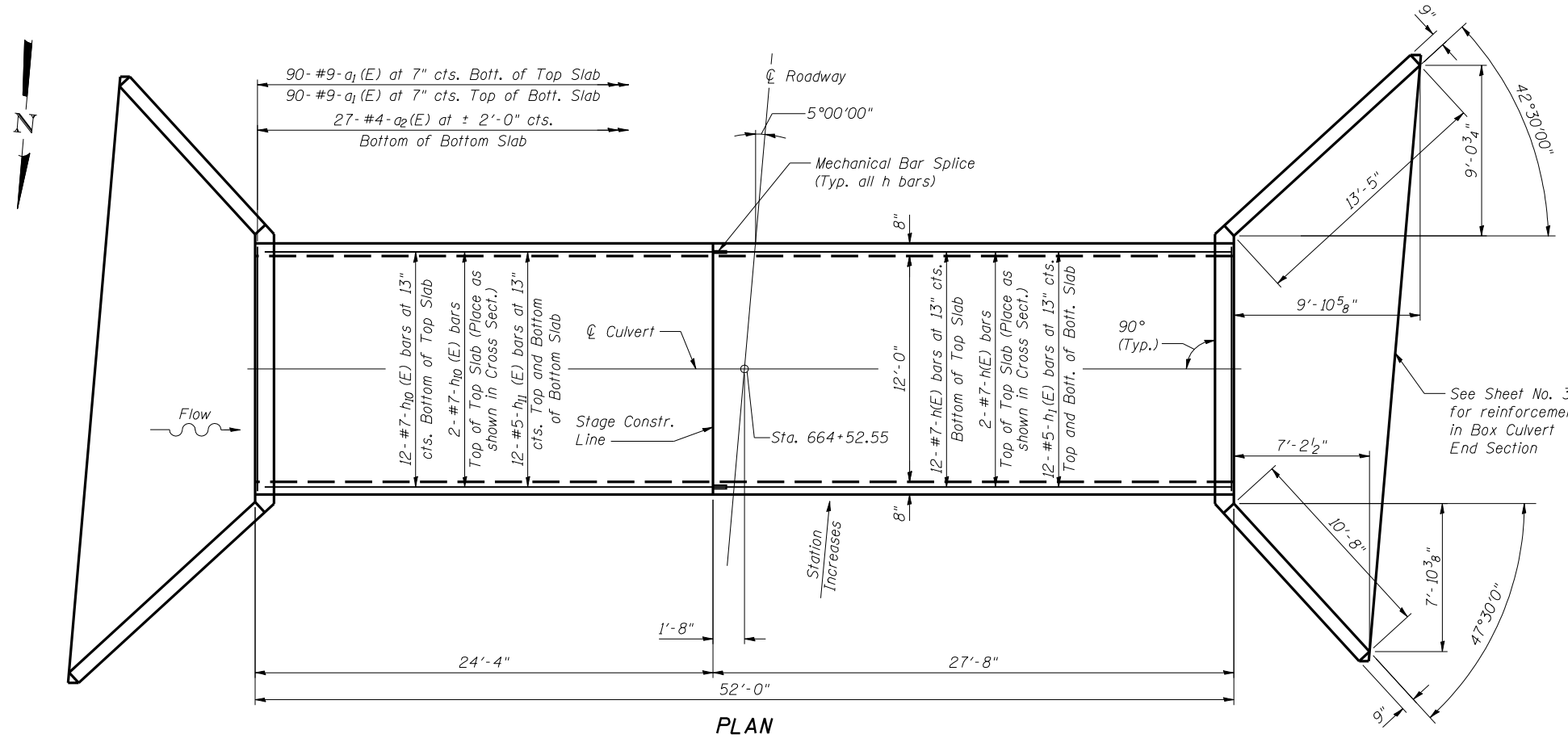
SHEET NO. 2  
7 SHEETS



**LONGITUDINAL SECTION**  
(Dimensions shown along Q Culvert)



**SECTION THRU BARREL**



**PLAN**

**BILL OF MATERIAL**

Bar	No.	Size	Length	Shape
a1(E)	180	#9	15'-6"	
a2(E)	27	#4	12'-3"	
h(E)	14	#7	27'-5"	
h1(E)	24	#5	27'-5"	
h2(E)	18	#6	27'-5"	
h10(E)	14	#7	24'-1"	
h11(E)	24	#5	24'-1"	
h12(E)	18	#6	24'-1"	
v(E)	148	#4	8'-3"	
v1(E)	148	#4	2'-7"	
Reinforcement Bars			Pound	14,935
Concrete Box Culverts			Cu. Yd.	67.6
Bar Splicers			Each	56

**DESIGN STRESSES**

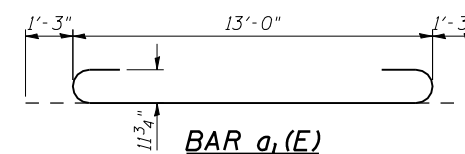
fy = 60,000 psi  
f'c = 3,500 psi

**LOADING HS 20-44**

DESIGNED	S.C. Crawley
CHECKED	K.L. Hayes
DRAWN	S.C. Crawley
CHECKED	K.L. Hayes

**NOTES**

Removal and replacement of weak soils with Rockfill - Foundation may be required beneath the culvert. The Engineer will determine the required depth of improvement following excavation to plan grade.  
Reinforcement Bars shall conform to the requirements of AASHTO M-31 M-42 or M-53, Grade 60.  
Reinforcement bars designated (E) shall be epoxy coated and shall conform to the requirements of AASHTO M-284.  
All construction joints shall be bonded.



**BARREL REINFORCING DETAILS**  
**US ROUTE 67 OVER WILLOW CREEK**  
**F.A.P. ROUTE 310 - SECTION 115(RS-3, B-2)**  
**MORGAN COUNTY**  
**STATION 664+52.55**  
**STRUCTURE NO. 069-7500**