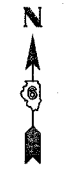
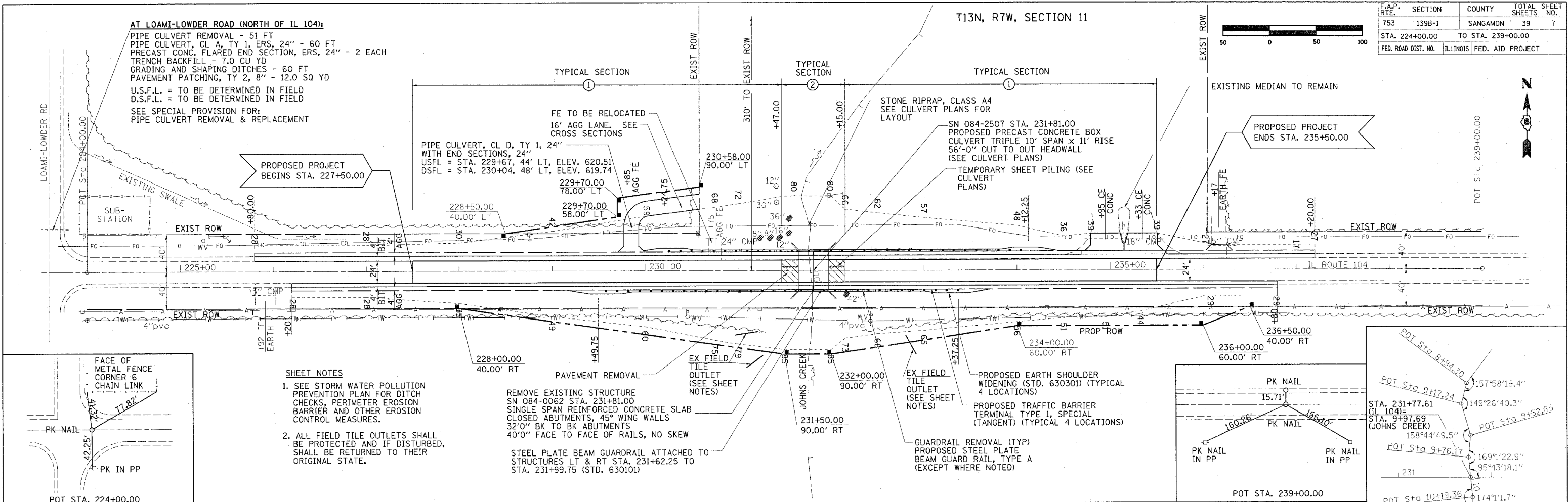


F.A.P. RTE.	SECTION	COUNTY	TOTAL SHEETS	SHEET NO.
753	139B-1	SANGAMON	39	7
STA. 224+00.00		TO STA. 239+00.00		
FED. ROAD DIST. NO.		ILLINOIS FED. AID PROJECT		



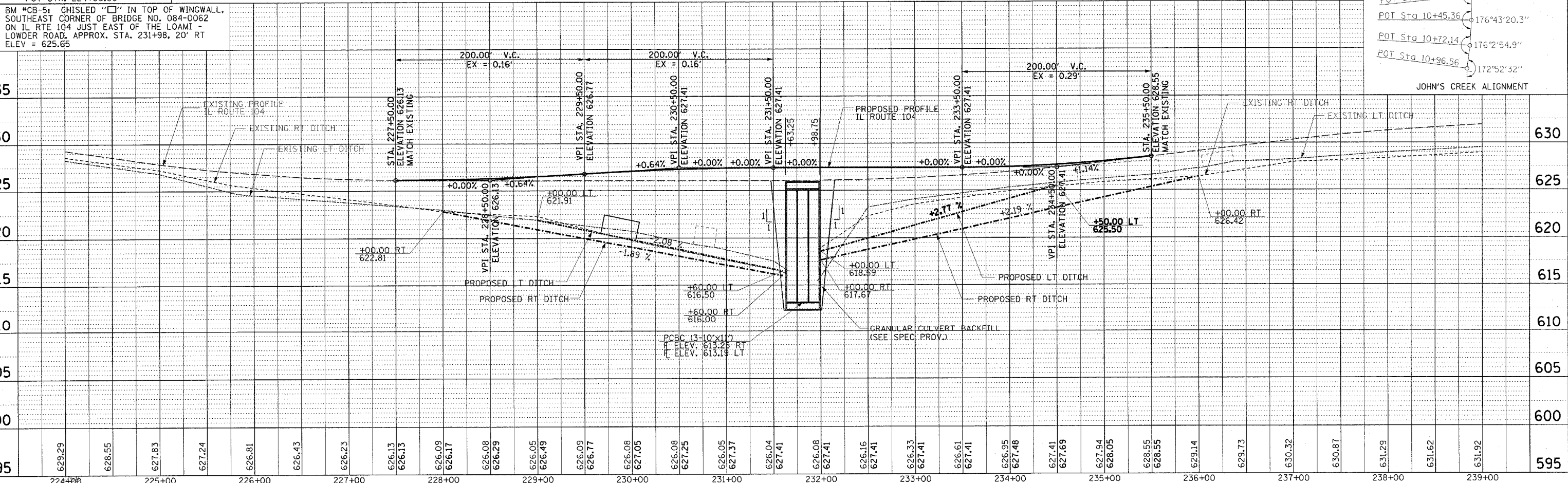
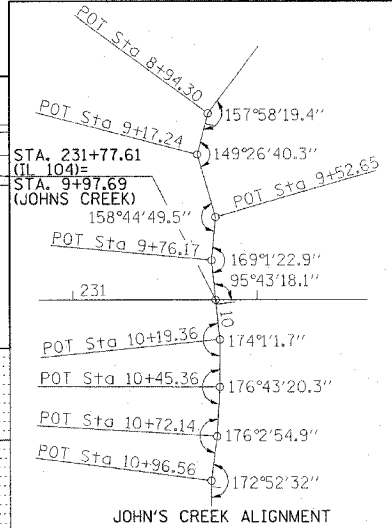
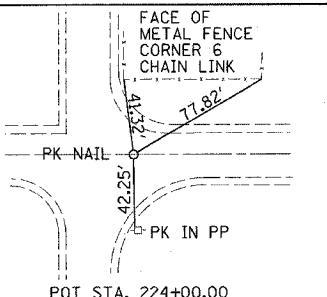
AT LOAMI-LOWDER ROAD (NORTH OF IL 104):
 PIPE CULVERT REMOVAL - 51 FT
 PIPE CULVERT, CL A, TY 1, ERS, 24" - 60 FT
 PRECAST CONC. FLARED END SECTION, ERS, 24" - 2 EACH
 TRENCH BACKFILL - 7.0 CU YD
 GRADING AND SHAPING DITCHES - 60 FT
 PAVEMENT PATCHING, TY 2, 8" - 12.0 SQ YD
 U.S.F.L. = TO BE DETERMINED IN FIELD
 D.S.F.L. = TO BE DETERMINED IN FIELD
 SEE SPECIAL PROVISION FOR:
 PIPE CULVERT REMOVAL & REPLACEMENT

T13N, R7W, SECTION 11



- SHEET NOTES**
- SEE STORM WATER POLLUTION PREVENTION PLAN FOR DITCH CHECKS, PERIMETER EROSION BARRIER AND OTHER EROSION CONTROL MEASURES.
 - ALL FIELD TILE OUTLETS SHALL BE PROTECTED AND IF DISTURBED, SHALL BE RETURNED TO THEIR ORIGINAL STATE.

REMOVE EXISTING STRUCTURE SN 084-0062 STA. 231+81.00 SINGLE SPAN REINFORCED CONCRETE SLAB CLOSED ABUTMENTS, 45° WING WALLS 32'0" BK TO BK ABUTMENTS 40'0" FACE TO FACE OF RAILS, NO SKEW
 STEEL PLATE BEAM GUARDRAIL ATTACHED TO STRUCTURES LT & RT STA. 231+99.75 (STD. 630101)



DATE	BY	REVISION

DATE	BY	REVISION

DATE	BY	REVISION