

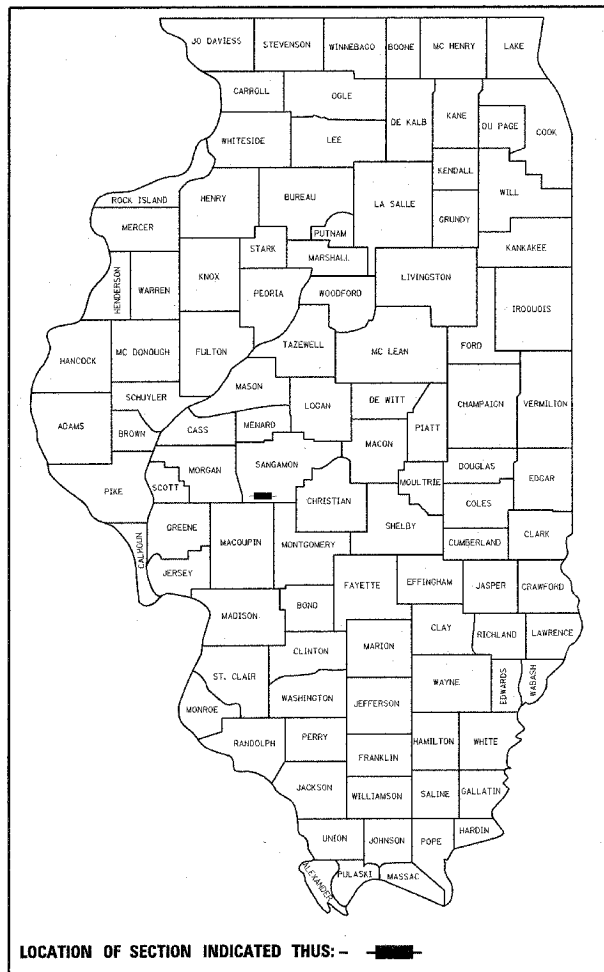
F.A.P. RTE.	SECTION	COUNTY	TOTAL SHEETS	SHEET NO.
753	139B-1	SANGAMON	39	1
FED. ROAD DIST. NO.		ILLINOIS	FED. AID PROJECT	

+3
-42 sheets

STATE OF ILLINOIS
DEPARTMENT OF TRANSPORTATION
DIVISION OF HIGHWAYS
**PROPOSED
HIGHWAY PLANS**

F.A.P. ROUTE 753 (IL RTE 104)
SECTION 139B-1
PROJECT: F-0753(030)
BRIDGE REPLACEMENT
SANGAMON COUNTY
C - 96-503-08

D-96-558-02

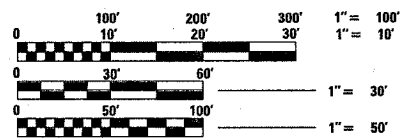


INDEX OF SHEETS

- 1 COVER SHEET
- 2 GENERAL NOTES & HIGHWAY STANDARDS
- 3-3C SUMMARY OF QUANTITIES
- 4 EXISTING TYPICAL SECTION
- 5 PROPOSED TYPICAL SECTIONS
- 6 SCHEDULE OF QUANTITIES
- 7 PLAN AND PROFILE SHEET
- 8-9 ~~STAGE CONSTRUCTION PLANS~~
- 9A ~~MAXIMUM WIDTH SIGNING~~
- 10-14 STORM WATER POLLUTION PREVENTION PLAN
- 15-21 PROPOSED CULVERT PLANS
- 22-26 ROADWAY DETAILS
- 27 TEMP. TRAFFIC SIGNAL LOOP DETAILS
- 28-37 ROADWAY CROSS SECTIONS
- 38-39 CHANNEL CROSS SECTIONS

ROADWAY CLASSIFICATION

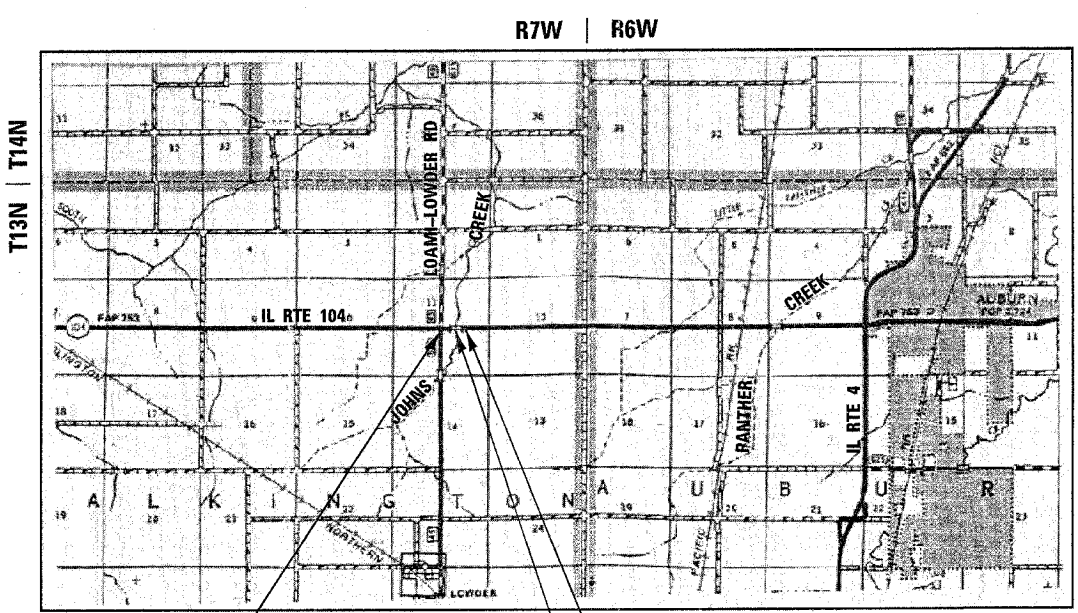
F.A.P. 753 (IL 104) - MINOR ARTERIAL
ADT 2700 (2001) - MU 7%
CRS 9.0 - RESURFACED 2002



SCALES
PLAN 1" = 50'
PROFILE HORIZ. 1" = 50'
PROFILE VERT. 1" = 5'
CROSS SECTIONS 1" = 10'
1" = 5'

FULL SIZE PLANS HAVE BEEN PREPARED USING STANDARD ENGINEERING SCALES, REDUCED SIZED PLANS WILL NOT CONFORM TO STANDARD SCALES, IN MAKING MEASUREMENTS ON REDUCED PLANS, THE ABOVE SCALES MAY BE USED.

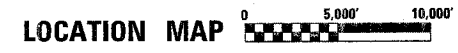
FOR UNDERGROUND UTILITY LOCATIONS CALL J.U.L.I.E. TOLL FREE 1-800-892-0123 TALKINGTON TOWNSHIP



PROJECT BEGINS
STA. 227 + 50.00

PROJECT ENDS
STA. 235 + 50.00

SN 084-2507
STA. 231 + 81.00
PCBC TRIPLE
10' SPAN x 11' RISE



GROSS AND NET LENGTH OF PROJECT = 0.15 MILES

PROJECT ENGINEER: SAL MADONIA (217) 782-4761
SQUAD LEADER: MARCUS BRUCE (217) 785-5336

CONTRACT NO. 72689

Rev. Sheet 2-26-07

F.A.P. RTE.	SECTION	COUNTY	TOTAL SHEETS	SHEET NO.
753	139B-1	SANGAMON	39	3
STA.		TO STA.		
FED. ROAD DIST. NO.		ILLINOIS	FED. AID PROJECT	

SUMMARY OF QUANTITIES

LOCATION OF WORK
 FAP 753 (IL RTE. 104)
 APPROXIMATELY 4.33 MILES WEST OF AUBURN
 SANGAMON COUNTY

80% FED./20% STATE

TOTAL QUANTITY
 STP TWO-LANE
 RURAL ROADWAY

X028-2A

PAYCODE	PAY ITEM DESCRIPTION	UNITS	TOTAL QUANTITY
20100110	TREE REMOVAL (6 TO 15 UNITS DIAMETER)	UNIT	28
20100210	TREE REMOVAL (OVER 15 UNITS DIAMETER)	UNIT	94
20200100	EARTH EXCAVATION	CU YD	2390
20300100	CHANNEL EXCAVATION	CU YD	540
20800150	TRENCH BACKFILL	CU YD	7
25000200	SEEDING, CLASS 2	ACRE	2.3
31400100	GRADING AND SHAPING DITCHES	FOOT	60
25000400	NITROGEN FERTILIZER NUTRIENT	POUND	207
25000500	PHOSPHORUS FERTILIZER NUTRIENT	POUND	207
25000600	POTASSIUM FERTILIZER NUTRIENT	POUND	207
25000700	AGRICULTURAL GRAIND LIMESTONE	TON	4.6
25100115	MULCH, METHOD 2	ACRE	2.3
28000250	TEMPORARY EROSION CONTROL SEEDING	POUND	230
28000300	TEMPORARY DITCH CHECKS	EACH	25
28000900	FENCE (EROSION CONTROL)	FOOT	80
28100107	STONE RIPRAP, CLASS A4	SQ YD	582
28200200	FILTER FABRIC	SQ YD	582
35101400	AGGREGATE BASE COURSE, TYPE B	TON	277
3560072	HOT-MIX ASPHALT BASE COURSE WIDENING, 9"	SQ YD	1426
40200800	AGGREGATE SURFACE COURSE, TYPE B	TON	50
40600200	BITUMINOUS MATERIALS (PRIME COAT)	TON	2.0
40600300	AGGREGATE (PRIME COAT)	TON	8.0
40600895	CONSTRUCTING TEST STRIP	EACH	2
40600982	HOT-MIX ASPHALT SURFACE REMOVAL - BUTT JOINT	SQ YD	333
40600990	TEMPORARY RAMP	SQ YD	26

REVISIONS	
NAME	DATE

ILLINOIS DEPARTMENT OF TRANSPORTATION
 SUMMARY OF QUANTITIES
 FAP 753 (IL RTE. 104)
 SECTION 139B-1
 SANGAMON COUNTY

SCALE: VERT.
 DATE: HORIZ.

DRAWN BY
 CHECKED BY

Rev. 2-26-07

F.A.3. RTE.	SECTION	COUNTY	TOTAL SHEETS	SHEET NO.
753	139B-1	SANGAMON	39	3A
STA.		TO STA.		
FED. ROAD DIST. NO.		ILLINOIS	FED. AID PROJECT	

SUMMARY OF QUANTITIES (CONTINUED)

LOCATION OF WORK
FAP 753 (IL RTE. 104)
APPROXIMATELY 4.33 MILES WEST OF AUBURN
SANGAMON COUNTY

80% FED./20% STATE
TOTAL QUANTITY
STP TWO-LANE
RURAL ROADWAY
X028-2A

PAYCODE	PAY ITEM DESCRIPTION	UNITS	TOTAL QUANTITY
40603080	HOT-MIX ASPHALT BINDER COURSE, IL 19.0, N50	TON	967
40603310	HOT-MIX ASPHALT SURFACE COURSE, MIX "C", N50	TON	179
42300400	PORTLAND CEMENT CONCRETE DRIVEWAY PAVEMENT, 8"	SQ YD	146
44000100	PAVEMENT REMOVAL	SQ YD	564
44000200	DRIVEWAY PAVEMENT REMOVAL	SQ YD	221
44000920	BITUMINOUS CONCRETE SHOULDER REMOVAL	SQ YD	949
48100500	AGGREGATE SHOULDERS, TYPE A 6"	SQ YD	937
44200094	PAVEMENT PATCH, TYPE II, 8"	SQ YD	12
48203029	HOT-MIX ASPHALT SHOULDERS, 8"	SQ YD	60
48203100	HOT-MIX ASPHALT SHOULDERS	TON	148
50100100	REMOVAL OF EXISTING STRUCTURES	EACH	1
50105220	PIPE CULVERT REMOVAL	FOOT	73
50800105	REINFORCEMENT BARS	POUND	5990
50800205	REINFORCEMENT BARS, EPOXY COATED	POUND	1710
51205200	TEMPORARY SHEET PILING	SQ FT	1114
51500100	NAME PLATES	EACH	1
54214509	PRECAST REINFORCED CONCRETE FLARED END SECTIONS, EQUIVALENT ROUND SIZE 24"	EACH	2
54003000	CONCRETE BOX CULVERTS	CU YD	105.4
542A5479	PIPE CULVERTS CLASS A, TYPE 1, EQUIVALENT ROUND SIZE 24"	FOOT	60
54200229	PIPE CULVERTS, CLASS D, TYPE 1 24"	FOOT	37
54213459	END SECTIONS 24"	EACH	2
* 63000000	STEEL PLATE BEAM GUARD RAIL, TYPE A	FOOT	500
* 63000025	STEEL PLATE BEAM GUARD RAIL, ATTACHED TO STRUCTURES	FOOT	75
* 63100167	TRAFFIC BARRIER TERMINAL TYPE 1, SPECIAL (TANGENT)	EACH	4
* 63200310	GUARD RAIL REMOVAL	FOOT	379
63300115	REMOVAL AND REINSTALLATION OF EXISTING STEEL PLATE BEAM GUARD RAIL, SINGLE RAIL	FOOT	177

*SPECIALTY ITEMS

Rev. 2-26-07

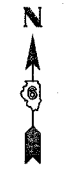
REVISIONS	
NAME	DATE

ILLINOIS DEPARTMENT OF TRANSPORTATION
SUMMARY OF QUANTITIES
FAP 753 (IL RTE. 104)
SECTION 139B-1
SANGAMON COUNTY

SCALE: VERT.
HORIZ.
DATE

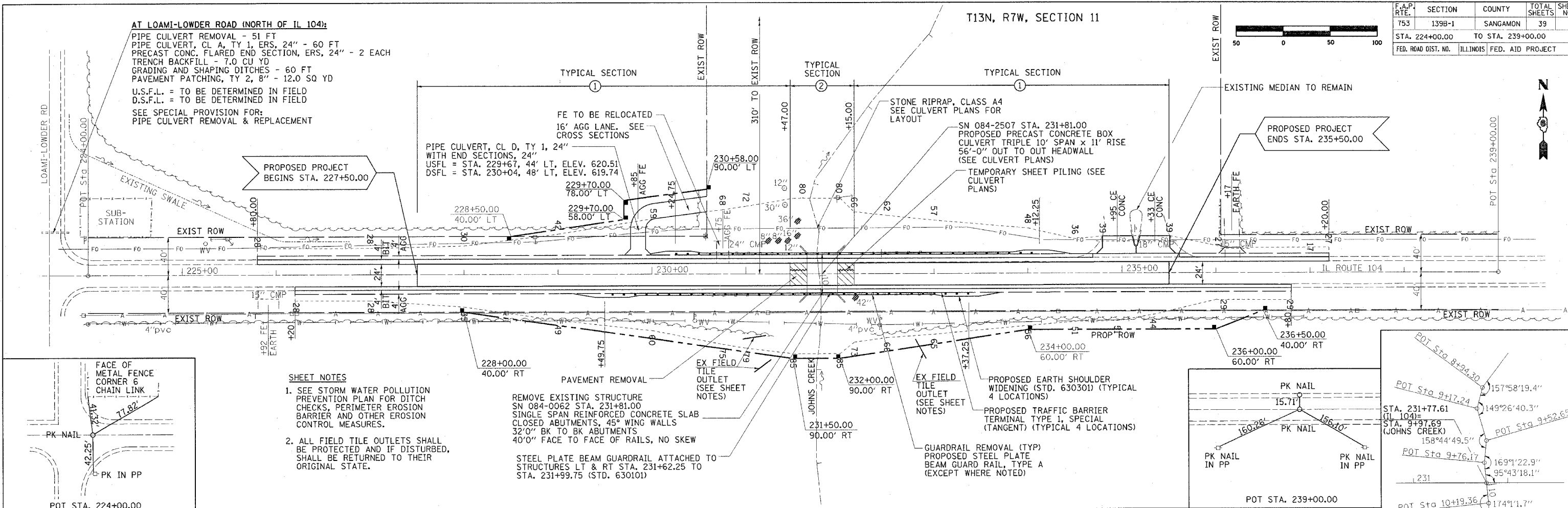
DRAWN BY
CHECKED BY

F.A.P. RTE.	SECTION	COUNTY	TOTAL SHEETS	SHEET NO.
753	139B-1	SANGAMON	39	7
STA. 224+00.00		TO STA. 239+00.00		
FED. ROAD DIST. NO.		ILLINOIS FED. AID PROJECT		



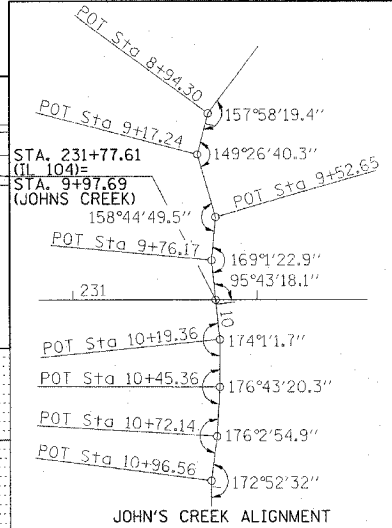
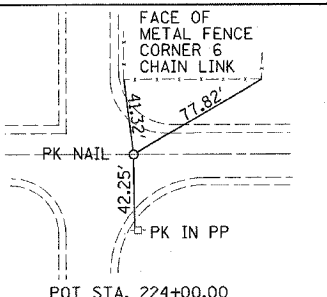
AT LOAMI-LOWDER ROAD (NORTH OF IL 104):
 PIPE CULVERT REMOVAL - 51 FT
 PIPE CULVERT, CL A, TY 1, ERS, 24" - 60 FT
 PRECAST CONC. FLARED END SECTION, ERS, 24" - 2 EACH
 TRENCH BACKFILL - 7.0 CU YD
 GRADING AND SHAPING DITCHES - 60 FT
 PAVEMENT PATCHING, TY 2, 8" - 12.0 SQ YD
 U.S.F.L. = TO BE DETERMINED IN FIELD
 D.S.F.L. = TO BE DETERMINED IN FIELD
 SEE SPECIAL PROVISION FOR:
 PIPE CULVERT REMOVAL & REPLACEMENT

T13N, R7W, SECTION 11

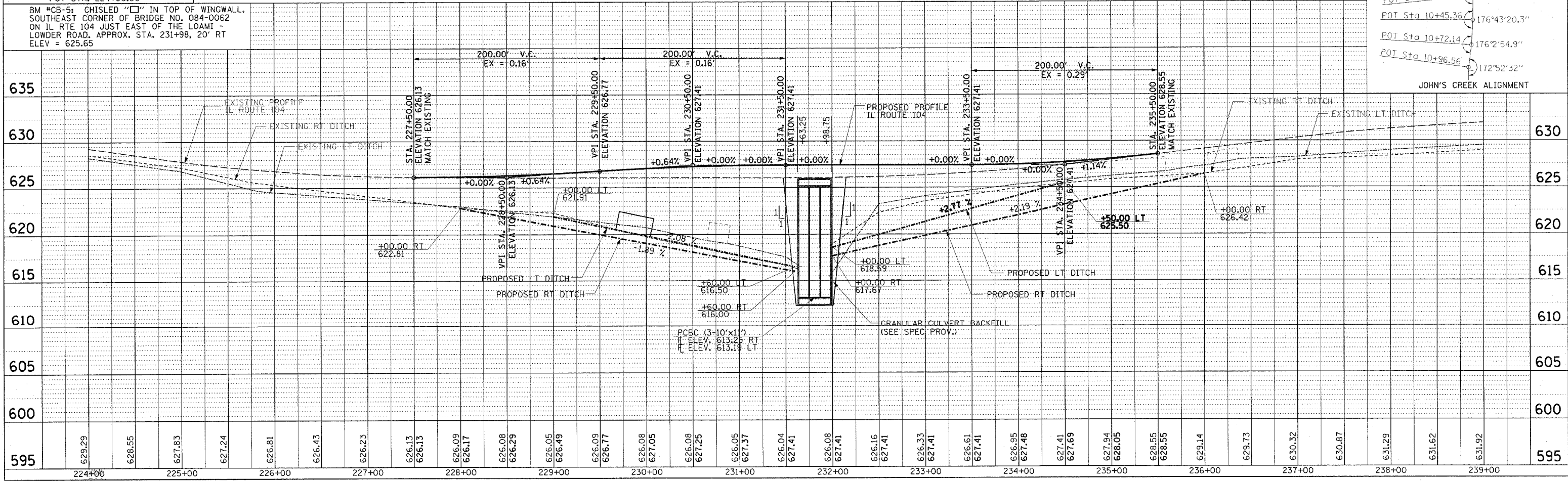


- SHEET NOTES**
- SEE STORM WATER POLLUTION PREVENTION PLAN FOR DITCH CHECKS, PERIMETER EROSION BARRIER AND OTHER EROSION CONTROL MEASURES.
 - ALL FIELD TILE OUTLETS SHALL BE PROTECTED AND IF DISTURBED, SHALL BE RETURNED TO THEIR ORIGINAL STATE.

REMOVE EXISTING STRUCTURE SN 084-0062 STA. 231+81.00 SINGLE SPAN REINFORCED CONCRETE SLAB CLOSED ABUTMENTS, 45° WING WALLS 32'0" BK TO BK ABUTMENTS 40'0" FACE TO FACE OF RAILS, NO SKEW
 STEEL PLATE BEAM GUARDRAIL ATTACHED TO STRUCTURES LT & RT STA. 231+99.75 (STD. 630101)



BM *CB-5: CHISLED "□" IN TOP OF WINGWALL, SOUTHEAST CORNER OF BRIDGE NO. 084-0062 ON IL RTE 104 JUST EAST OF THE LOAMI - LOWDER ROAD, APPROX. STA. 231+98, 20' RT ELEV = 625.65



DATE	BY	REVISION

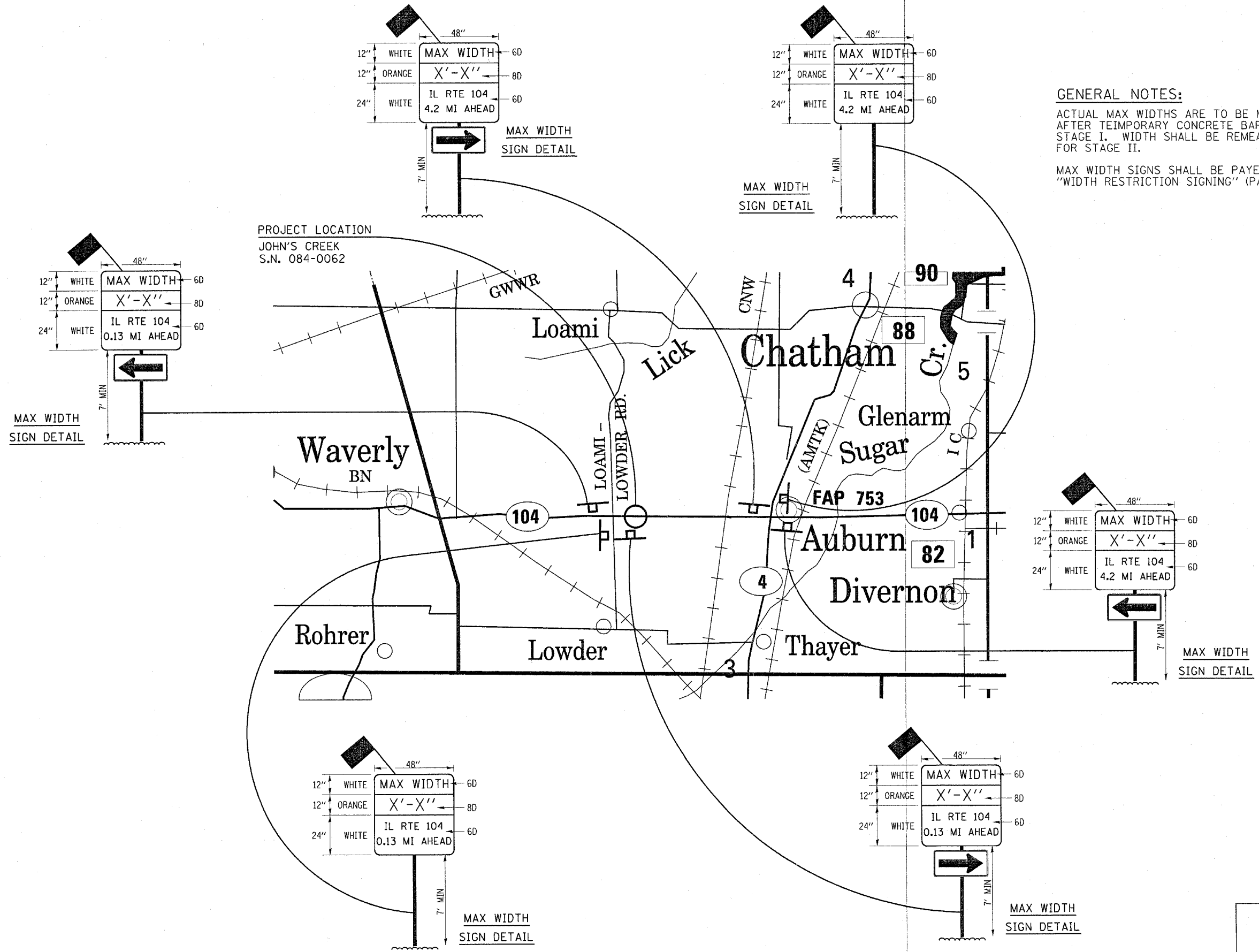
DATE	BY	REVISION

F.A.P. RTE.	SECTION	COUNTY	TOTAL SHEETS	SHEET NO.
753	139B-1	SANGAMON	39	9A
FED. ROAD DIST. NO.		ILLINOIS	FED. AID PROJECT	

GENERAL NOTES:

ACTUAL MAX WIDTHS ARE TO BE MEASURED BY THE ENGINEER AFTER TEMPORARY CONCRETE BARRIER WALL IS PLACED FOR STAGE I. WIDTH SHALL BE REMEASURED AND SIGNS UPDATED FOR STAGE II.

MAX WIDTH SIGNS SHALL BE PAID FOR AS ONE LUMP SUM UNDER "WIDTH RESTRICTION SIGNING" (PAY CODE * X7200201)



ILLINOIS DEPARTMENT OF TRANSPORTATION

MAXIMUM WIDTH SIGNING

DATE02/2007

DRAWN BY RTS
CHECKED BY MEB

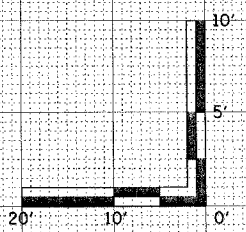
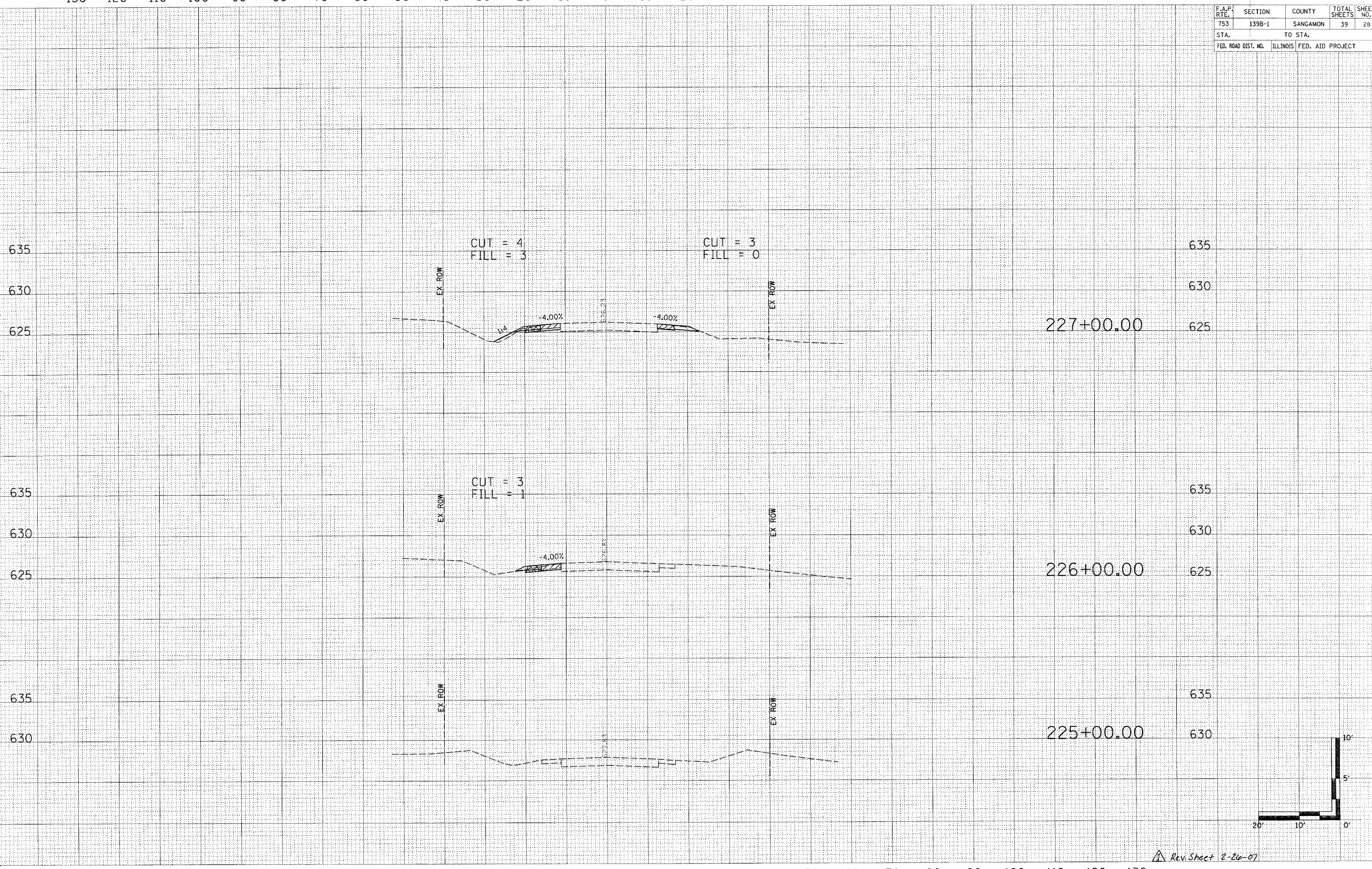
ADDED SHEET 2-26-07

130 120 110 100 90 80 70 60 50 40 30 20 10 0 10 20 30 40 50 60 70 80 90 100 110 120 130

F.A.P. RTE.	SECTION	COUNTY	TOTAL SHEETS	SHEET NO.
753	139B-1	SANGAMON	39	28
STA.		TO STA.		
FED. ROAD DIST. NO.		ILLINOIS FED. AID PROJECT		

SURVEYED
 CHECKED
 DATE
 NO.

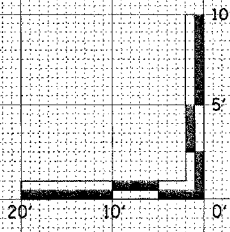
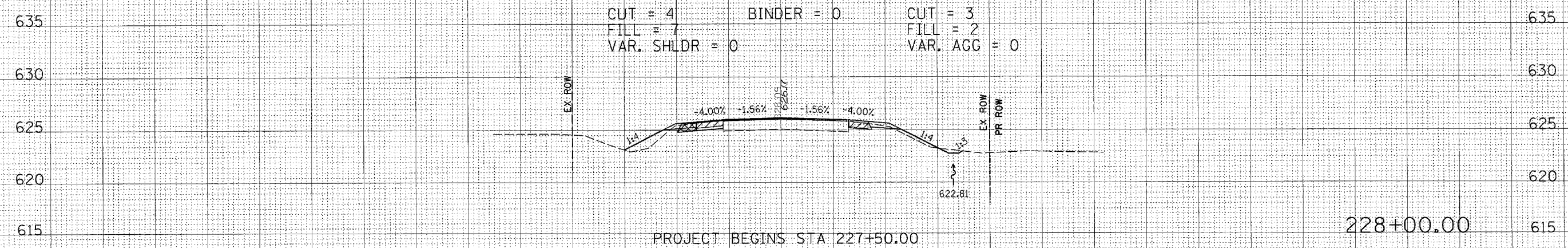
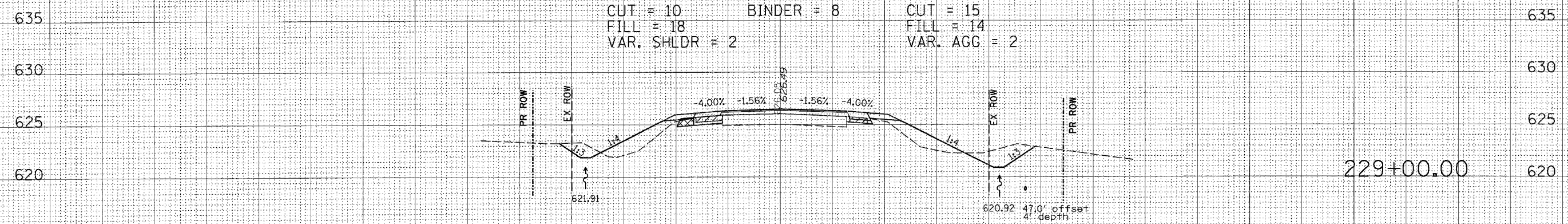
SURVEYED
 CHECKED
 DATE
 NO.



Rev. Sheet 2-26-07

130 120 110 100 90 80 70 60 50 40 30 20 10 0 10 20 30 40 50 60 70 80 90 100 110 120 130

F.A.P. RTE.	SECTION	COUNTY	TOTAL SHEETS	SHEET NO.
753	139B-1	SANGAMON	39	29
STA.	TO STA.			
FED. ROAD DIST. NO.	ILLINOIS	FED. AID PROJECT		



Rev. Sheet 2-26-07

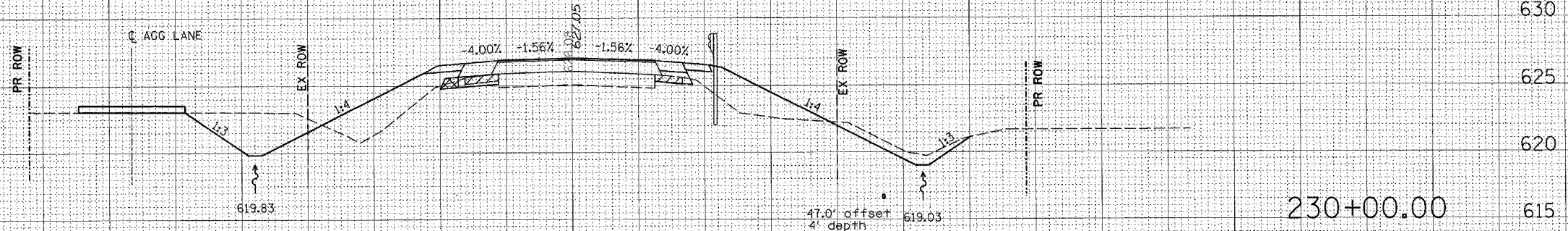
PROJECT PLOTTED
 SHEET TEMPLATE
 NOTE BOOK AREAS
 AREAS CHECKED

PROJECT PLOTTED
 SHEET TEMPLATE
 NOTE BOOK AREAS
 AREAS CHECKED

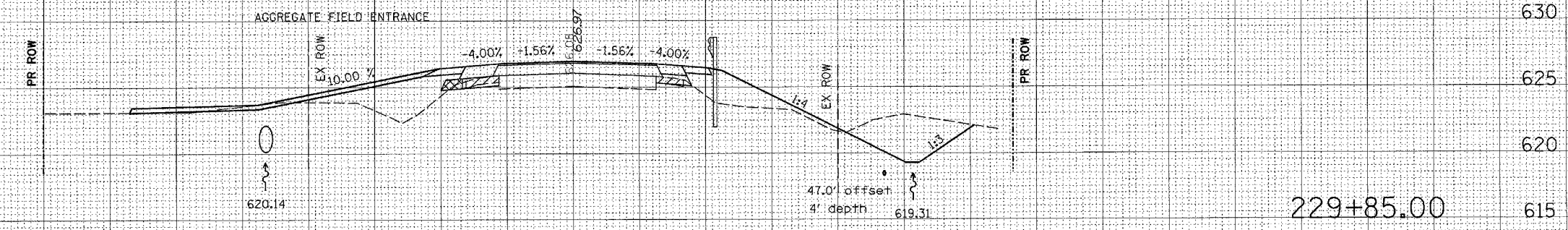
130 120 110 100 90 80 70 60 50 40 30 20 10 0 10 20 30 40 50 60 70 80 90 100 110 120 130

F.A.P. RTE. 753	SECTION 139B-1	COUNTY SANGAMON	TOTAL SHEETS 39	SHEET NO. 30
STA.		TO STA.		
FED. ROAD DIST. NO.	ILLINOIS	FED. AID PROJECT		

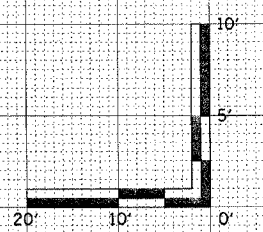
CUT = 41 BINDER = 22 CUT = 12
 FILL = 38 VAR. SHLDR = 5 FILL = 33
 VAR. AGG = 4



230+00.00



229+85.00



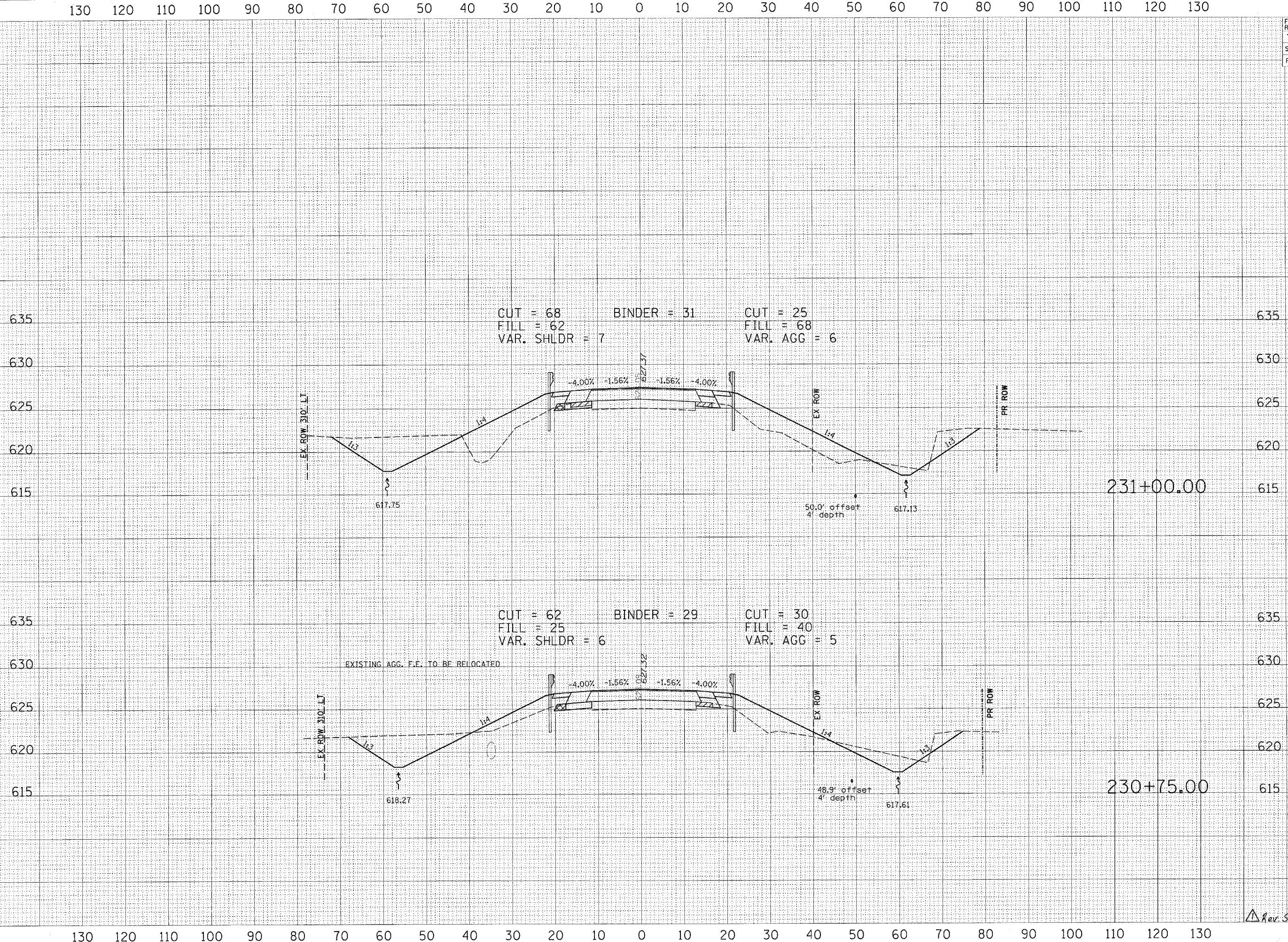
Rev. Sheet 2-26-07

130 120 110 100 90 80 70 60 50 40 30 20 10 0 10 20 30 40 50 60 70 80 90 100 110 120 130

DATE ED
 SURVEY PLOTTED
 NOTE BOOK NO.
 AREAS CHECKED

DATE ED
 SURVEY PLOTTED
 NOTE BOOK NO.
 AREAS CHECKED

F.A.P. RTE. 753	SECTION 139B-1	COUNTY SANGAMON	TOTAL SHEETS 39	SHEET NO. 31
STA.		TO STA.		
FED. ROAD DIST. NO.	ILLINOIS	FED. AID PROJECT		



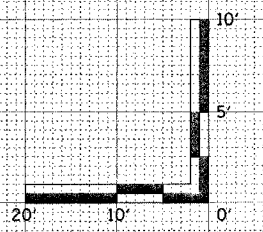
CUT = 68 BINDER = 31 CUT = 25
 FILL = 62 FILL = 68
 VAR. SHLDR = 7 VAR. AGG = 6

CUT = 62 BINDER = 29 CUT = 30
 FILL = 25 FILL = 40
 VAR. SHLDR = 6 VAR. AGG = 5

EXISTING AGG. F.E. TO BE RELOCATED

DATE: _____
 DRAWN BY: _____
 CHECKED BY: _____
 NO. _____

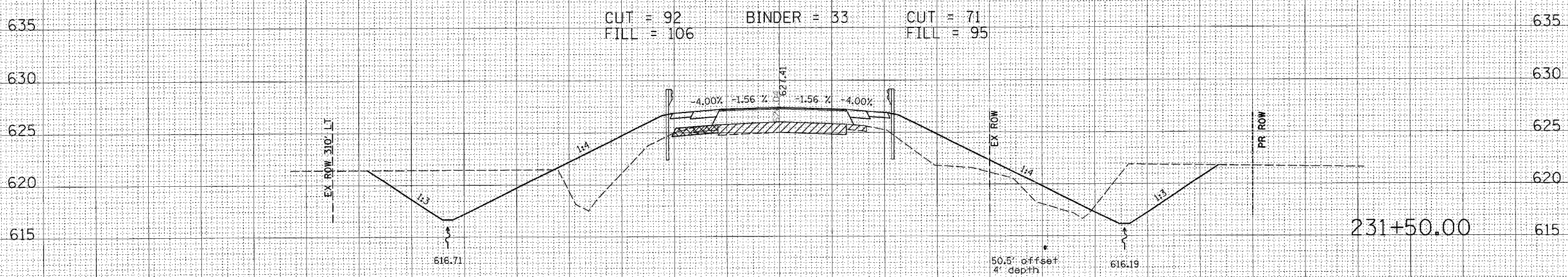
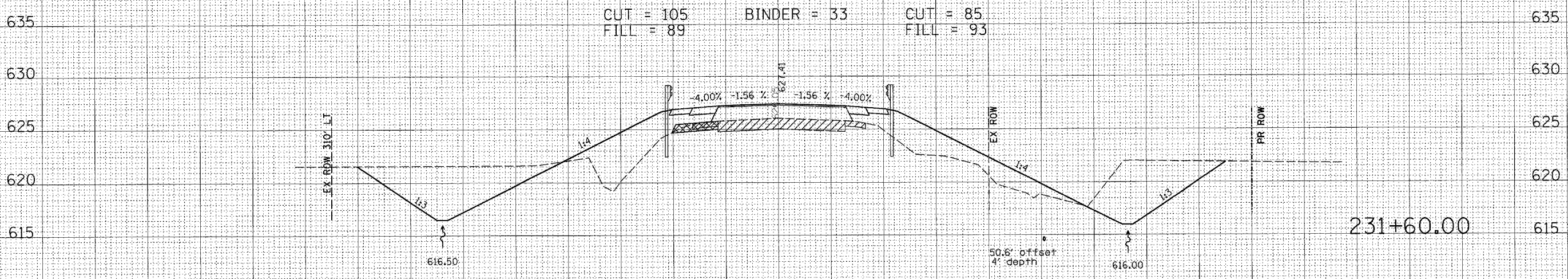
DATE: _____
 DRAWN BY: _____
 CHECKED BY: _____
 NO. _____



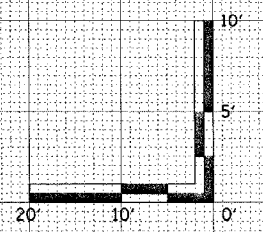
Rev. Sheet 2-26-07

F.A.P. RTE.	SECTION	COUNTY	TOTAL SHEETS	SHEET NO.
753	139B-1	SANGAMON	39	32
STA.		TO STA.		
FED. ROAD DIST. NO.		ILLINOIS FED. AID PROJECT		

130 120 110 100 90 80 70 60 50 40 30 20 10 0 10 20 30 40 50 60 70 80 90 100 110 120 130



130 120 110 100 90 80 70 60 50 40 30 20 10 0 10 20 30 40 50 60 70 80 90 100 110 120 130

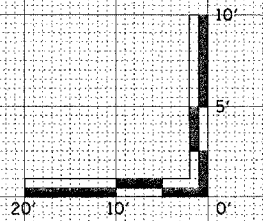
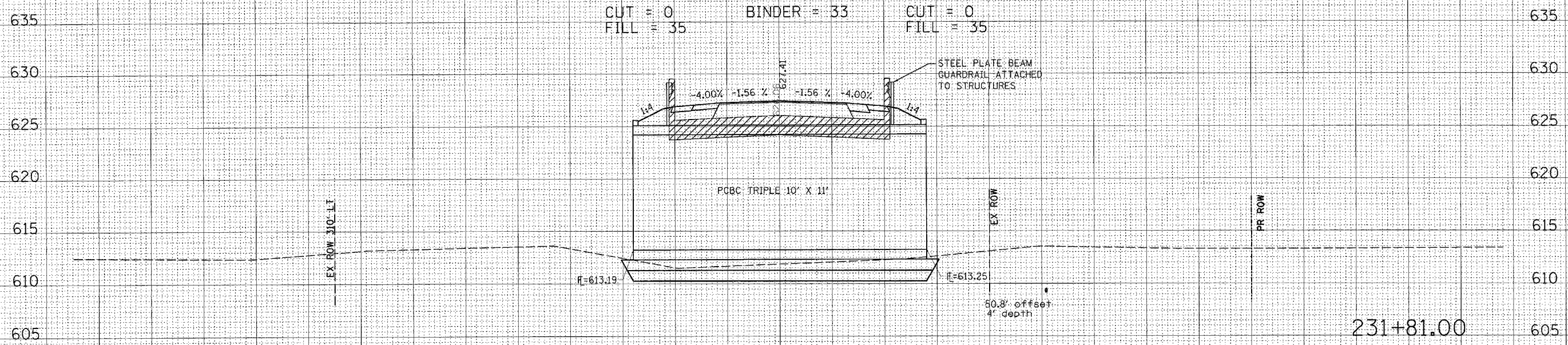
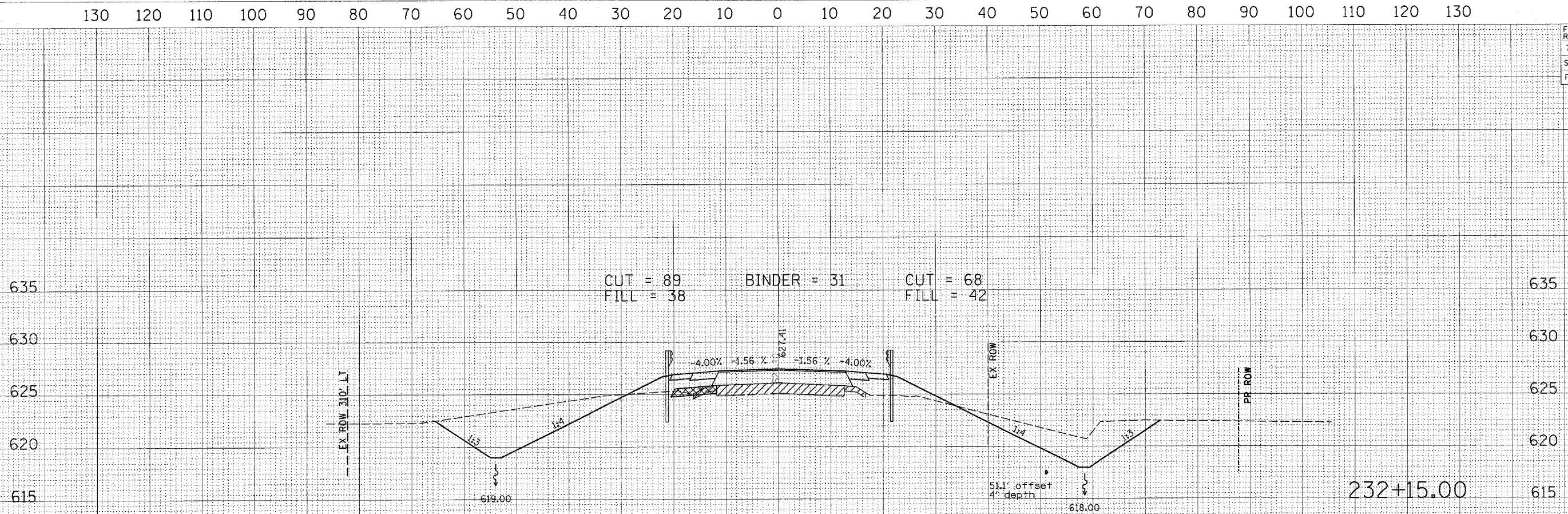


Rev Sheet 2-26-07

DATE: _____
 DRAWN BY: _____
 CHECKED BY: _____
 SURVEY: _____
 NOTE BOOK: _____
 NO. _____
 AREA CHECKED: _____

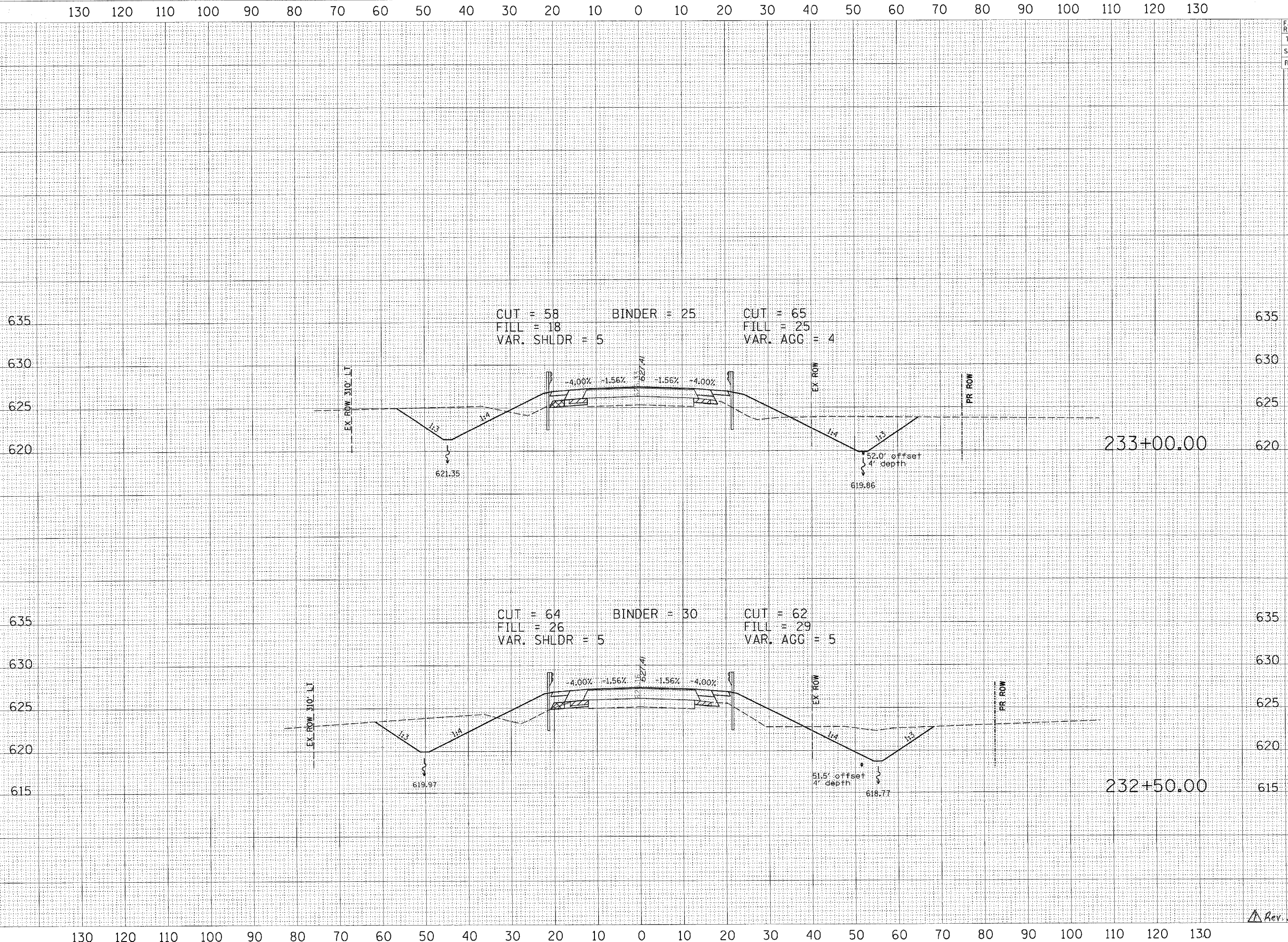
DATE: _____
 DRAWN BY: _____
 CHECKED BY: _____
 SURVEY: _____
 NOTE BOOK: _____
 NO. _____
 AREA CHECKED: _____

F.A.P. NO.	SECTION	COUNTY	TOTAL SHEETS	SHEET NO.
753	139B-1	SANGAMON	39	33
STA.	TO STA.			
FED. ROAD DIST. NO.	ILLINOIS FED. AID PROJECT			



Rev. Sheet 2-26-07

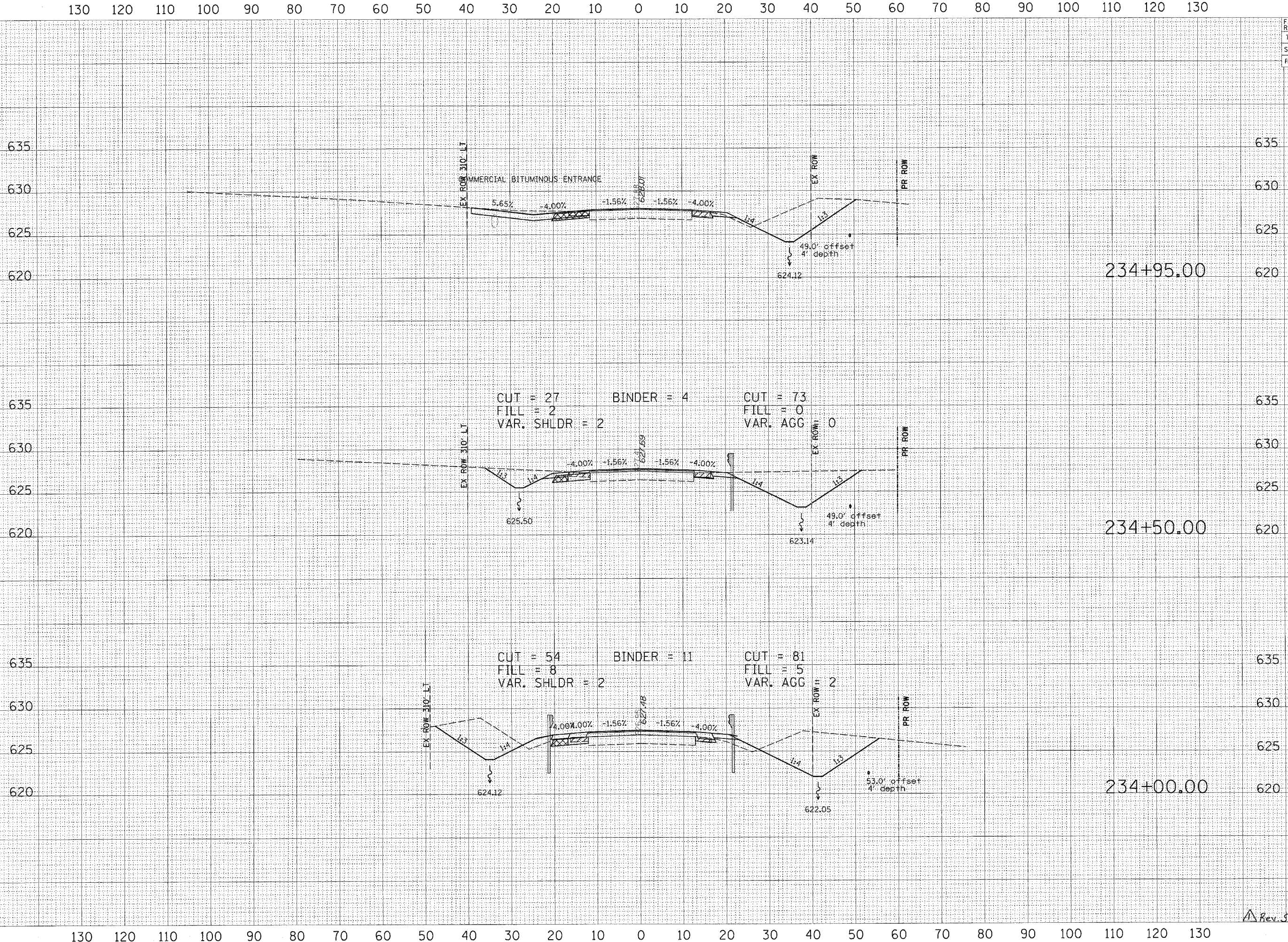
F.A.P. RTE.	SECTION	COUNTY	TOTAL SHEETS	SHEET NO.
753	139B-1	SANGAMON	39	34
STA.		TO STA.		
FED. ROAD DIST. NO.		ILLINOIS FED. AID PROJECT		



DATE PLOTTED	NO. OF SHEETS
NO. OF SHEETS	NO. OF SHEETS
NO. OF SHEETS	NO. OF SHEETS
NO. OF SHEETS	NO. OF SHEETS

DATE PLOTTED	NO. OF SHEETS
NO. OF SHEETS	NO. OF SHEETS
NO. OF SHEETS	NO. OF SHEETS
NO. OF SHEETS	NO. OF SHEETS

F.A.P. RTE.	SECTION	COUNTY	TOTAL SHEETS	SHEET NO.
753	1398-1	SANGAMON	39	35
STA.		TO STA.		
FED. ROAD DIST. NO.		ILLINOIS FED. AID PROJECT		

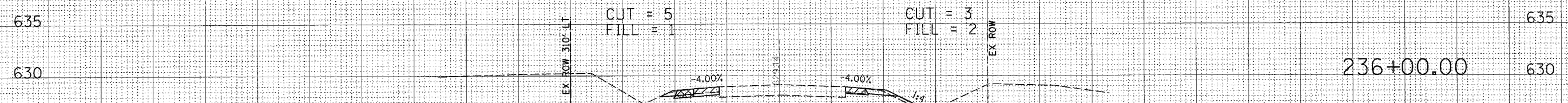
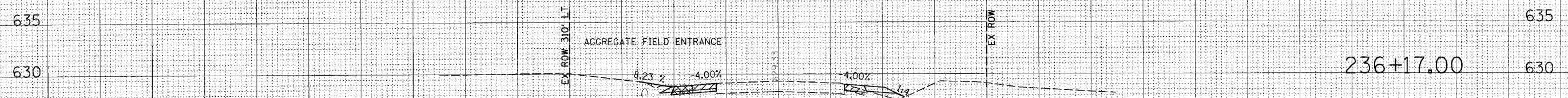


DATE	BY	NO.
DESIGNED	PLANNED	NO.
CHECKED	REVISIONS	NO.
APPROVED	DATE	NO.

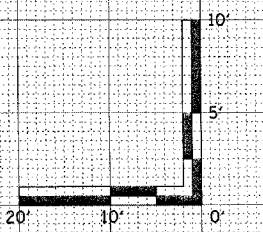
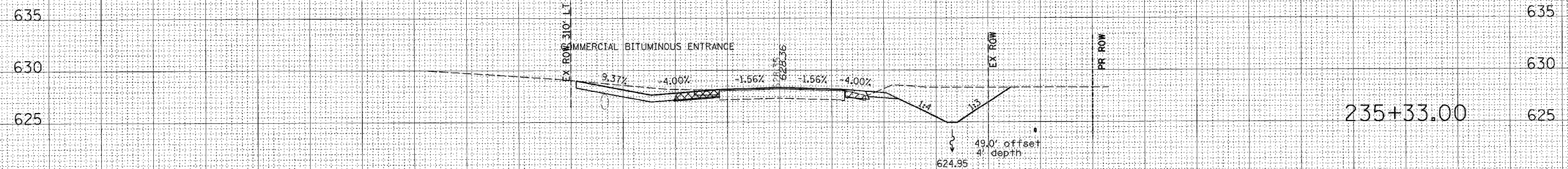
DATE	BY	NO.
DESIGNED	PLANNED	NO.
CHECKED	REVISIONS	NO.
APPROVED	DATE	NO.

130 120 110 100 90 80 70 60 50 40 30 20 10 0 10 20 30 40 50 60 70 80 90 100 110 120 130

F.A.P. RTE.	SECTION	COUNTY	TOTAL SHEETS	SHEET NO.
753	139B-1	SANGAMON	39	36
STA.	TO STA.			
FED. ROAD DIST. NO.	ILLINOIS	FED. AID PROJECT		



PROJECT ENDS STA 235+50.00



Rev. Sheet 2-26-01

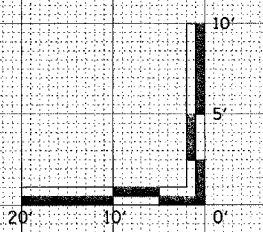
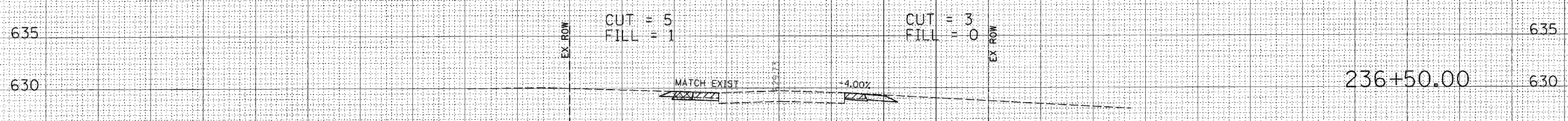
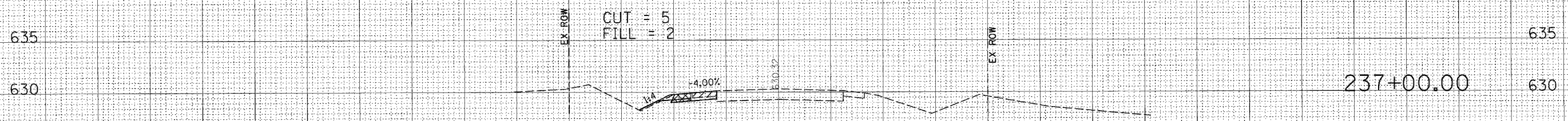
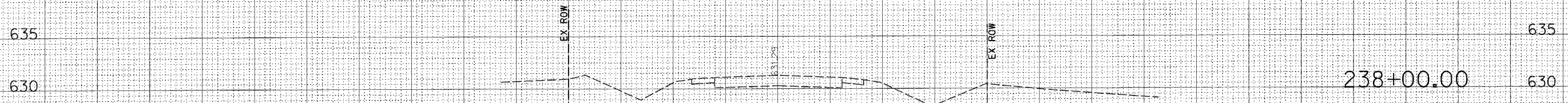
130 120 110 100 90 80 70 60 50 40 30 20 10 0 10 20 30 40 50 60 70 80 90 100 110 120 130

DATE: _____
 DRAWN BY: _____
 CHECKED BY: _____
 DATE: _____
 DRAWN BY: _____
 CHECKED BY: _____

DATE: _____
 DRAWN BY: _____
 CHECKED BY: _____
 DATE: _____
 DRAWN BY: _____
 CHECKED BY: _____

130 120 110 100 90 80 70 60 50 40 30 20 10 0 10 20 30 40 50 60 70 80 90 100 110 120 130

F.A.P. RTE.	SECTION	COUNTY	TOTAL SHEETS	SHEET NO.
753	139B-1	SANGAMON	39	37
STA.		TO STA.		
FED. ROAD DIST. NO.	ILLINOIS	FED. AID PROJECT		



Rev Sheet 2-26-07

130 120 110 100 90 80 70 60 50 40 30 20 10 0 10 20 30 40 50 60 70 80 90 100 110 120 130

PREPARED BY: _____
 CHECKED BY: _____
 DATE: _____
 NO. _____
 AREAS CHECKED: _____

PREPARED BY: _____
 CHECKED BY: _____
 DATE: _____
 NO. _____
 AREAS CHECKED: _____