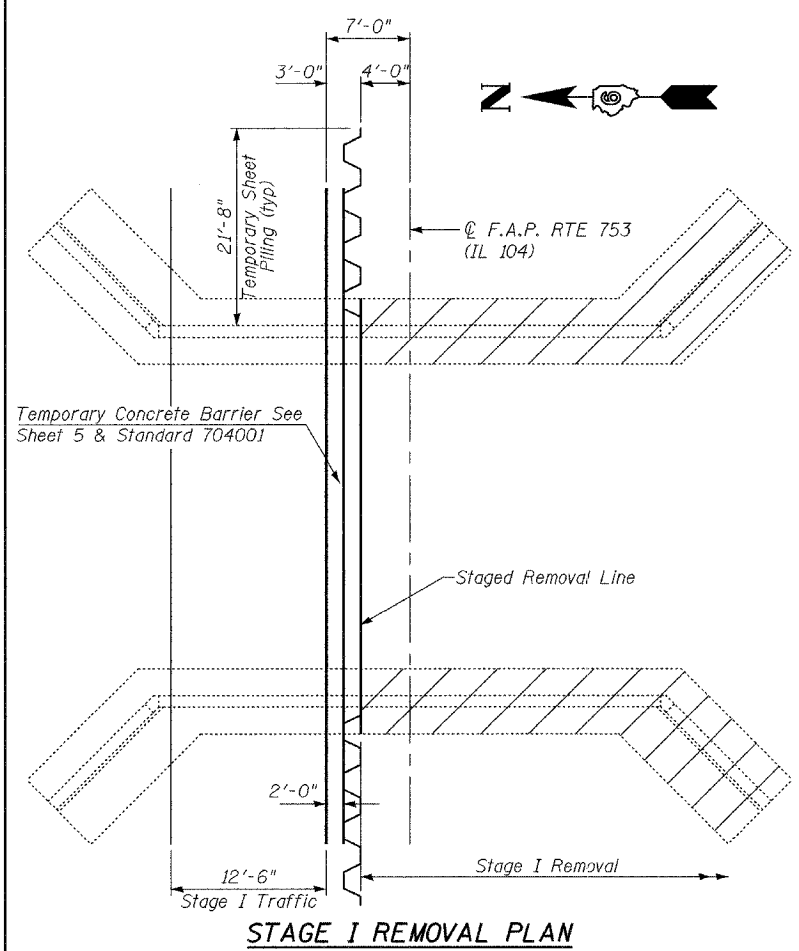
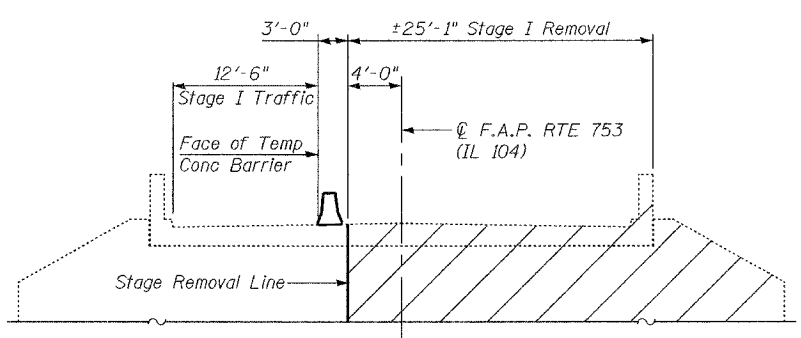


**NOTES**

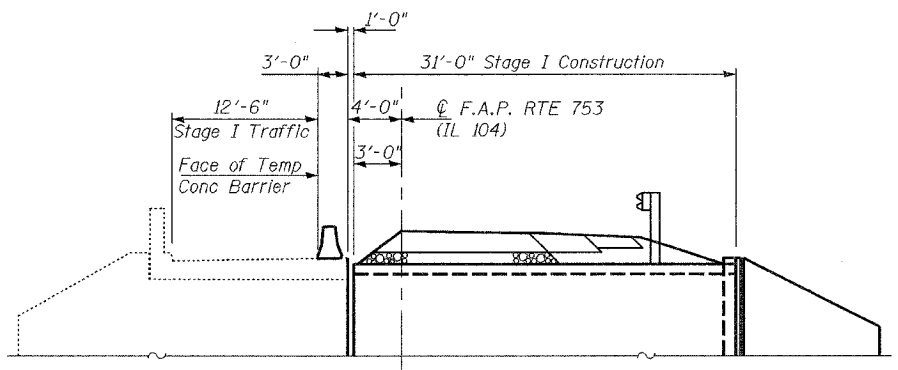
- 1.) Hatched Area Indicates "Removal of Existing Structures". Removal of Existing Bituminous & Concrete Wearing Surface and Existing Guardrail Shall be Included With the Cost of "Removal of Existing Structures".
- 2.) For Temporary Concrete Barrier, See Standard 704001 and Sheet 5 of 7.
- 3.) All Cross Sections Are Looking East.
- 4.) For Temporary Sheet Piling, See Sheet 3 of 7.



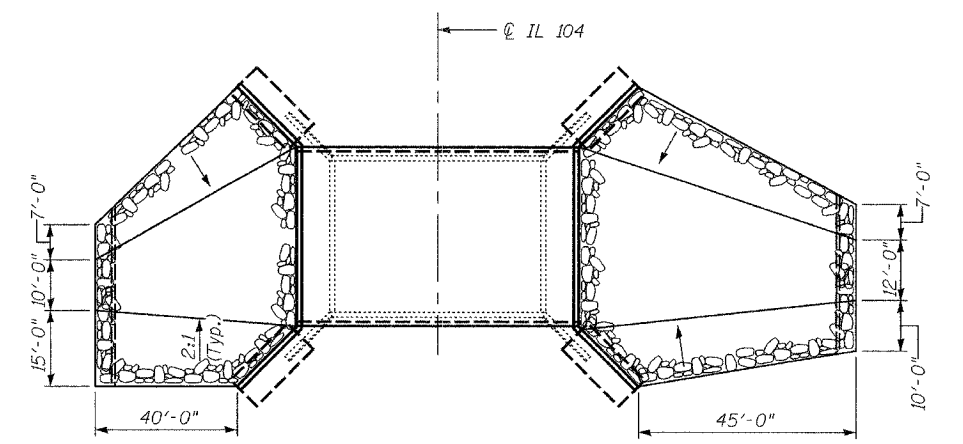
**STAGE I REMOVAL PLAN**



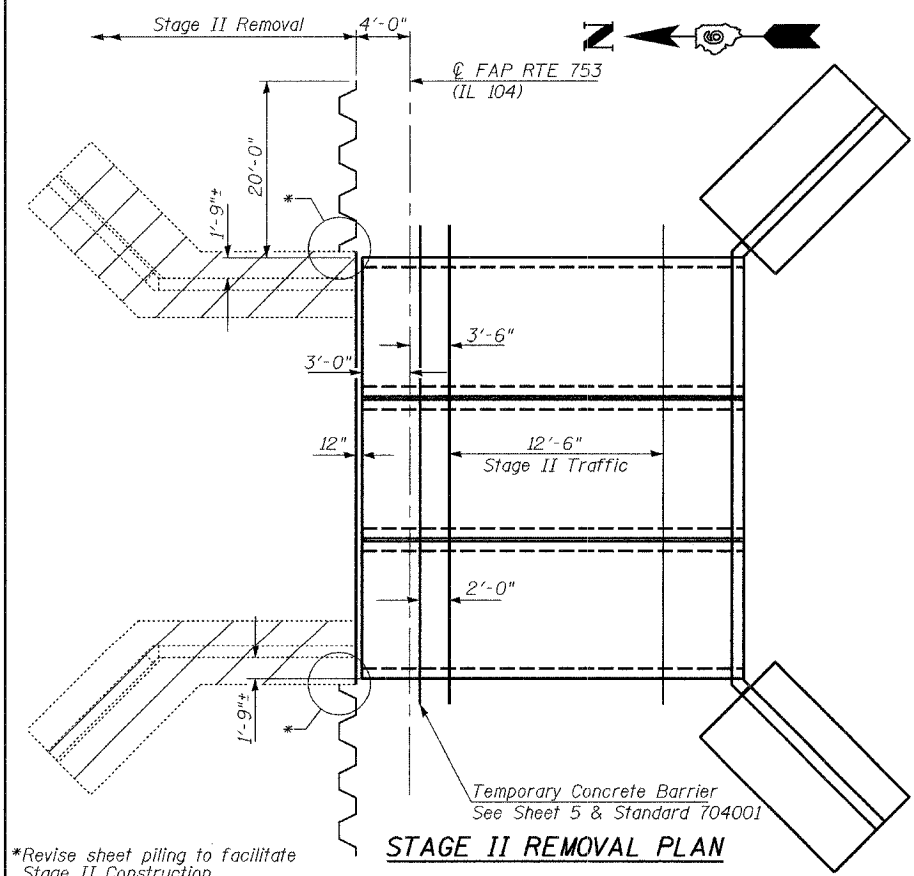
**STAGE I REMOVAL ELEVATION**



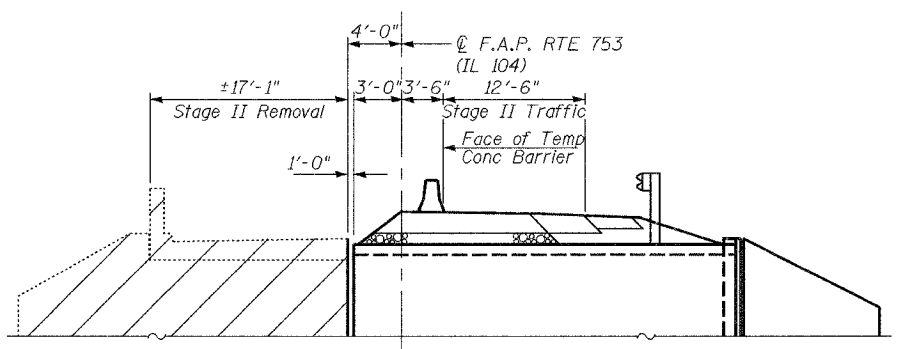
**STAGE I CONSTRUCTION ELEVATION**



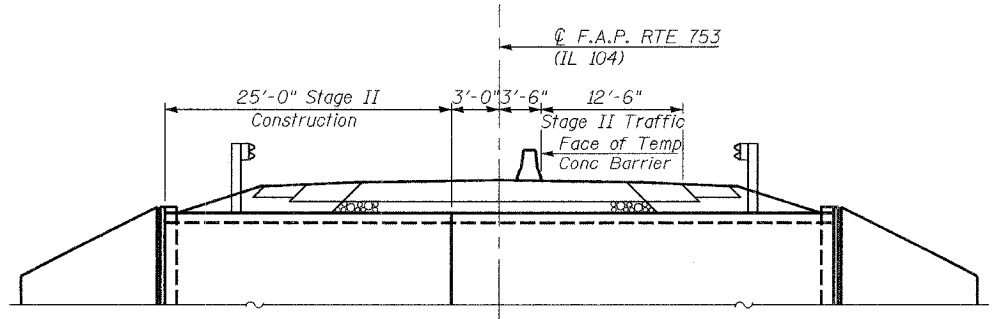
**RIPRAP LAYOUT**



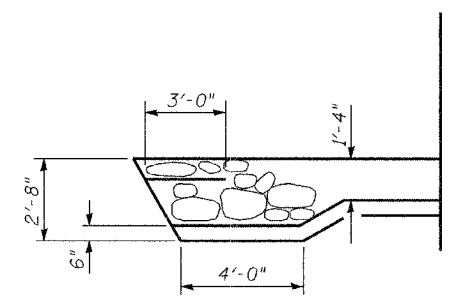
**STAGE II REMOVAL PLAN**



**STAGE II REMOVAL ELEVATION**



**STAGE II CONSTRUCTION ELEVATION**



**FLANK DETAIL**

\*Revise sheet piling to facilitate Stage II Construction

ILLINOIS DEPARTMENT OF TRANSPORTATION	
SHEET TITLE <b>STAGE CONSTRUCTION DETAILS</b>	
PROJECT IL. ROUTE 104 OVER JOHNS CREEK FAP ROUTE 753 SECTION 139BR-1 SANGAMON COUNTY STATION 231+81 STRUCTURE NUMBER 084-2507	PROJECT NO. 02124-2 SCALE DATE 02/01/07 DRAWN BY TFG/CFC CHECKED BY CME/REG/MCB DRAWING NO.
<b>COOMBE-BLOXDORF P.C.</b> Engineers / Land Surveyors Springfield, Illinois Design Firm License No. 184-002703	2 OF 7 SHTS