

F.A.P. RTE.	SECTION	COUNTY	TOTAL SHEETS	SHEET NO.
777	405RS-4	MONTGOMERY	75	1

STATE OF ILLINOIS  
DEPARTMENT OF TRANSPORTATION

DIVISION OF HIGHWAYS

PROPOSED  
HIGHWAY PLANS

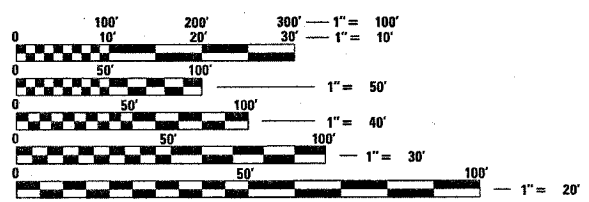
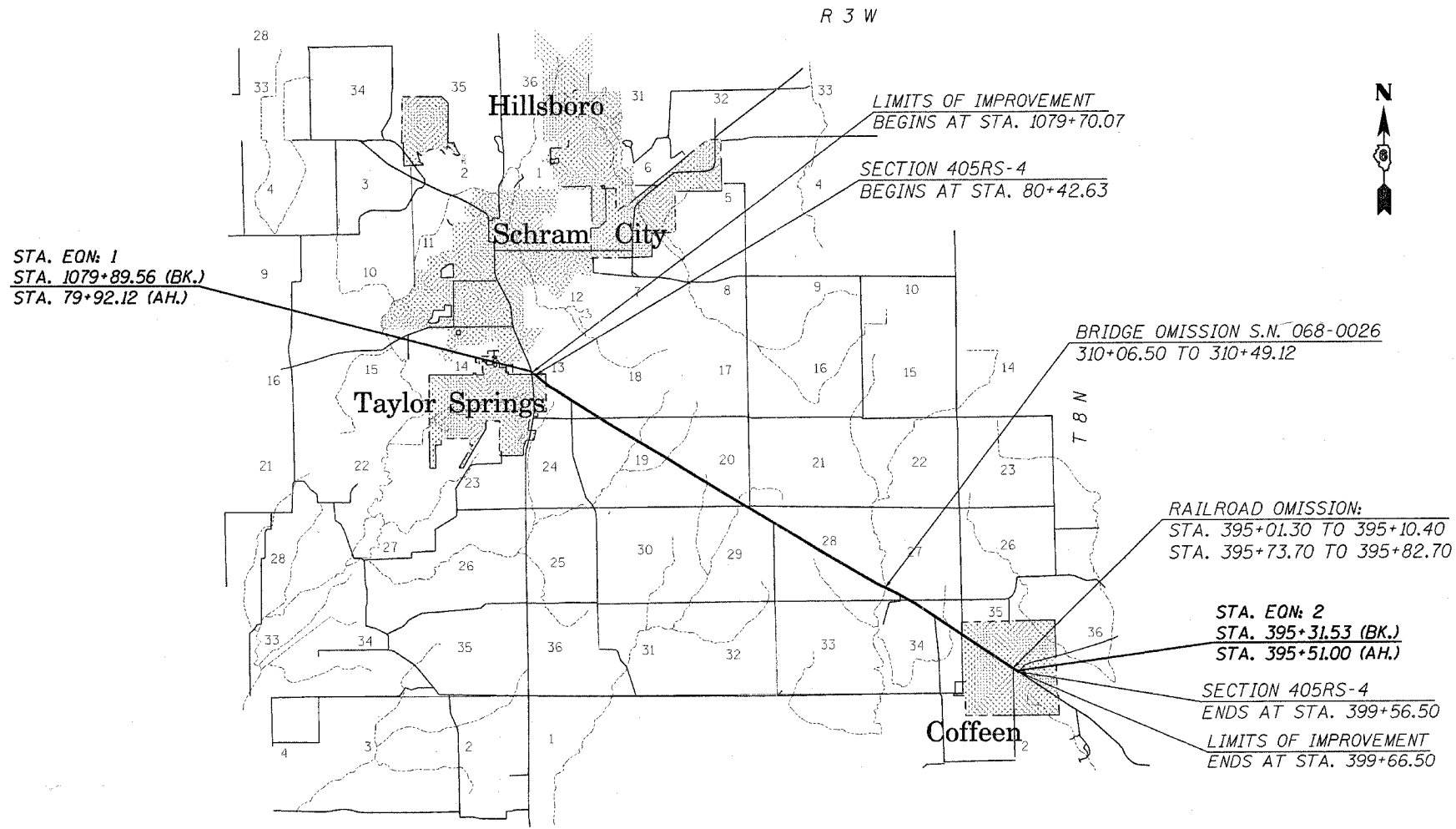
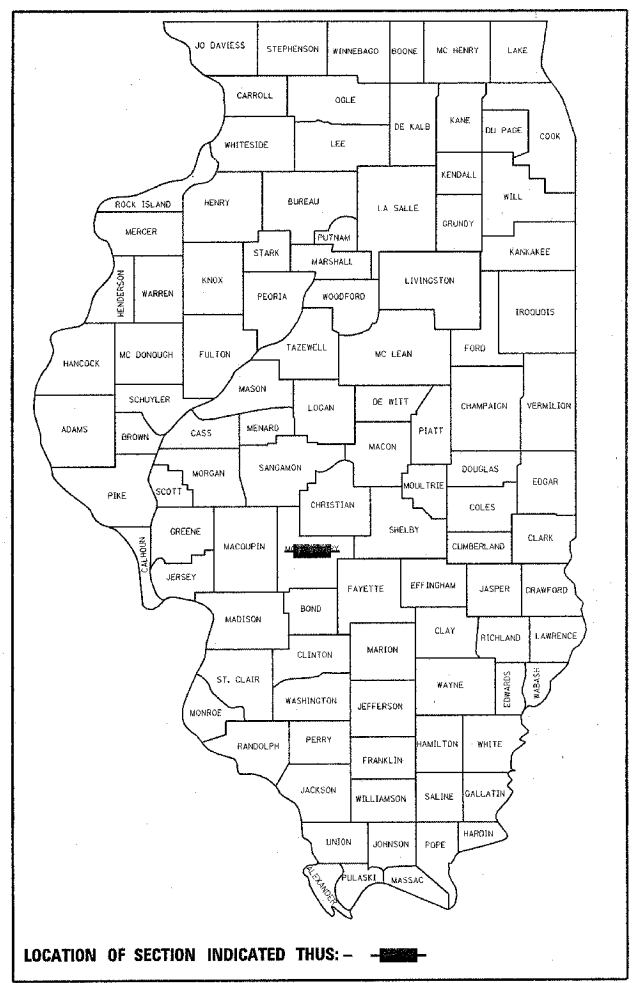
D-96-568-02

FOR INDEX OF SHEETS, SEE SHEET NO. 2

HIGHWAY CLASSIFICATION

F.A.P. 777 (IL 185)  
A.D.T. - 3,000 (2005) PV = 86.60%  
A.D.T. - 3,700 (2025) SU = 5.70%  
DESIGN SPEED - 55 mph MU = 7.70%  
POSTED SPEED - 55 mph  
CLASSIFICATION: MINOR ARTERIAL

F.A.P. ROUTE 777 (IL 185)  
SECTION 405RS-4  
PROJECT: F-0777(014)  
MONTGOMERY COUNTY  
C-96-530-07



FULL SIZE PLANS HAVE BEEN PREPARED USING STANDARD ENGINEERING SCALES. REDUCED SIZED PLANS WILL NOT CONFORM TO STANDARD SCALES. IN MAKING MEASUREMENTS ON REDUCED PLANS, THE ABOVE SCALES MAY BE USED.

J.U.L.I.E.  
JOINT UTILITY LOCATION INFORMATION FOR EXCAVATION  
1-800-892-0123

GROSS LENGTH = 32,109.70 FT = 6.08 MI  
NET LENGTH = 31,656.68 FT = 6.00 MI

STATE OF ILLINOIS  
DEPARTMENT OF TRANSPORTATION  
DIVISION OF HIGHWAYS

SUBMITTED Dec. 2, 2006  
Christi H. Reed  
DEPUTY DIRECTOR OF HIGHWAYS, REGION ENGINEER

February 2, 2007  
Eric E. Harshbarger  
ENGINEER OF DESIGN AND ENVIRONMENT

February 2, 2007  
Milton R. Sears, P.E.  
DIRECTOR OF HIGHWAYS, CHIEF ENGINEER

PRINTED BY THE AUTHORITY  
OF THE STATE OF ILLINOIS

PROJECT ENGINEER: SAL MADONIA (217) 782-4716  
SQUAD LEADER: RENE CABRERA (217) 557-9062  
JONATHAN W. COX