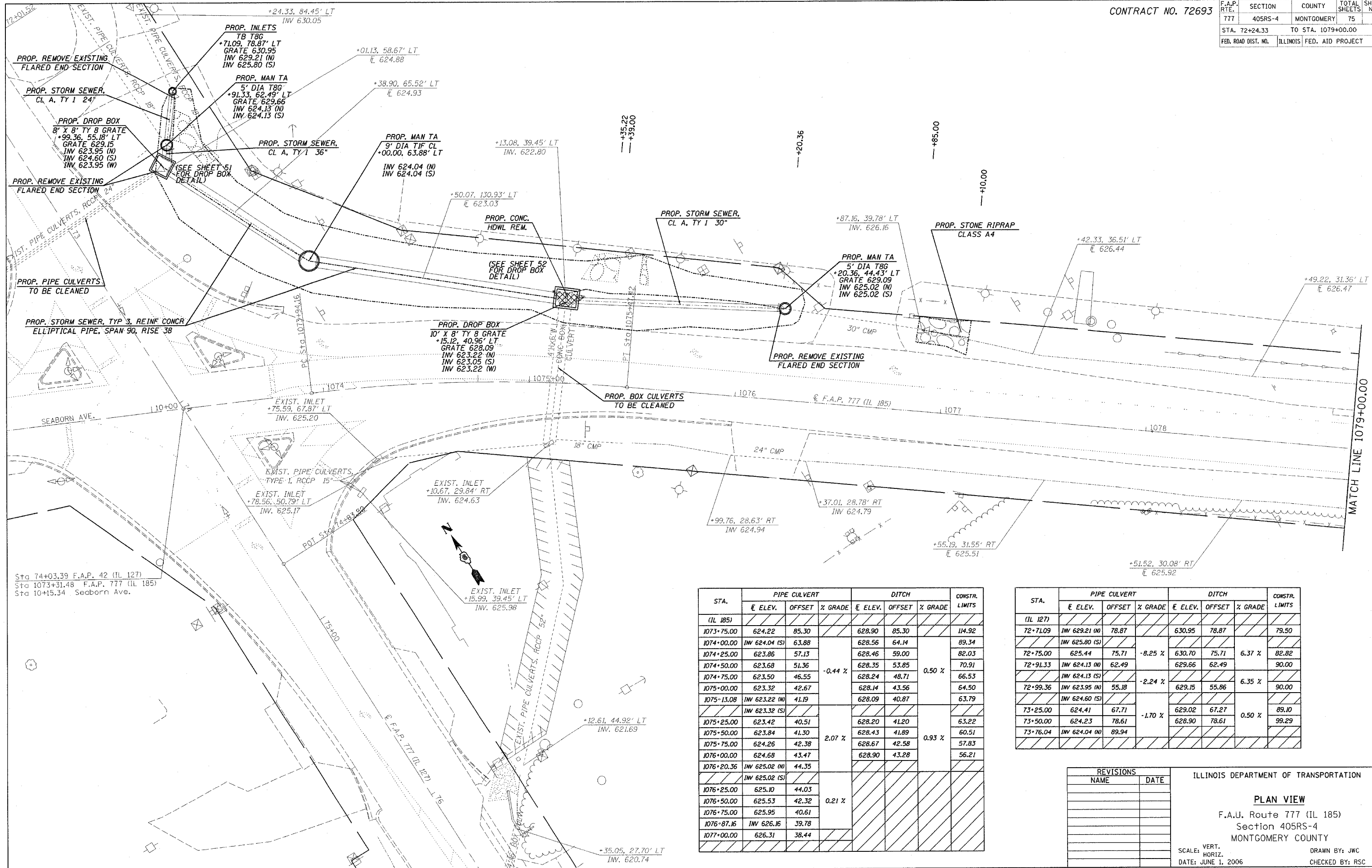


CONTRACT NO. 72693

F.A.P. RTE.	SECTION	COUNTY	TOTAL SHEETS	SHEET NO.
777	405RS-4	MONTGOMERY	75	19
STA. 72+24.33		TO STA. 1079+00.00		
FED. ROAD DIST. NO.		ILLINOIS FED. AID PROJECT		



Sta 74+03.39 F.A.P. 42 (IL 127)
 Sta 1073+31.48 F.A.P. 777 (IL 185)
 Sta 10+15.34 Seaborn Ave.

STA.	PIPE CULVERT			DITCH			CONSTR. LIMITS
	E. ELEV.	OFFSET	% GRADE	E. ELEV.	OFFSET	% GRADE	
(IL 185)							
1073+75.00	624.22	85.30		628.90	85.30		114.92
1074+00.00	INV 624.04 (S)	63.88		628.56	64.14		89.34
1074+25.00	623.86	57.13		628.46	59.00		82.03
1074+50.00	623.68	51.36		628.35	53.85		70.91
1074+75.00	623.50	46.55	-0.44 %	628.24	48.71	0.50 %	66.53
1075+00.00	623.32	42.67		628.14	43.56		64.50
1075+13.08	INV 623.22 (N)	41.19		628.09	40.87		63.79
1075+25.00	623.42	40.51		628.20	41.20		63.22
1075+50.00	623.84	41.30	2.07 %	628.43	41.89	0.93 %	60.51
1075+75.00	624.26	42.38		628.67	42.58		57.83
1076+00.00	624.68	43.47		628.90	43.28		56.21
1076+20.36	INV 625.02 (N)	44.35					
1076+25.00	625.10	44.03					
1076+50.00	625.53	42.32	0.21 %				
1076+75.00	625.95	40.61					
1076+87.16	INV 626.16	39.78					
1077+00.00	626.31	38.44					

STA.	PIPE CULVERT			DITCH			CONSTR. LIMITS
	E. ELEV.	OFFSET	% GRADE	E. ELEV.	OFFSET	% GRADE	
(IL 127)							
72+71.09	INV 629.21 (N)	78.87		630.95	78.87		79.50
72+75.00	625.44	75.71	-8.25 %	630.70	75.71	6.37 %	82.82
72+91.33	INV 624.13 (N)	62.49		629.66	62.49		90.00
72+99.36	INV 623.95 (S)	55.18	-2.24 %	629.15	55.86	6.35 %	90.00
73+25.00	624.41	67.71		629.02	67.27	0.50 %	89.10
73+50.00	624.23	78.61	-1.70 %	628.90	78.61		99.29
73+76.04	INV 624.04 (N)	89.94					

REVISIONS	
NAME	DATE

ILLINOIS DEPARTMENT OF TRANSPORTATION

PLAN VIEW

F.A.U. Route 777 (IL 185)
 Section 405RS-4
 MONTGOMERY COUNTY

SCALE: VERT. _____
 HORIZ. _____

DATE: JUNE 1, 2006

DRAWN BY: JWC
 CHECKED BY: RSC

PLOT DATE = 12/01/2006
 FILE NAME = c:\projects\656802\shiplan\rip\rip83.dgn
 PLOT SCALE = 20.0000' / IN.
 USER NAME = coxjh