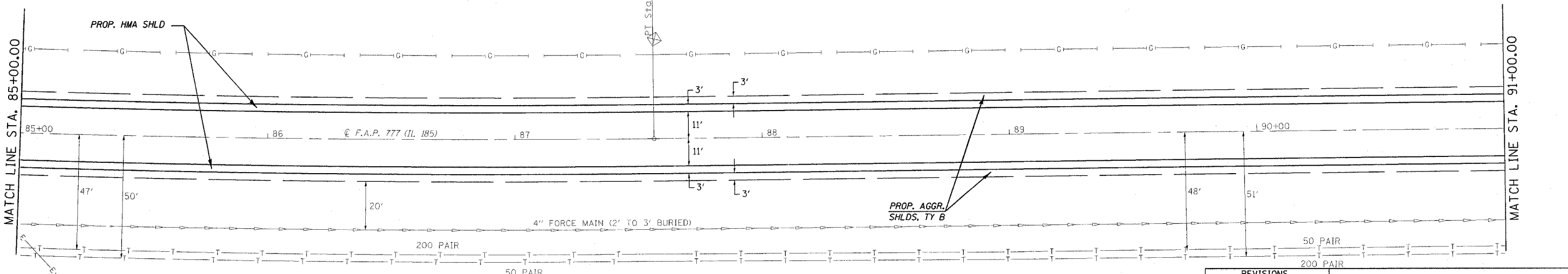
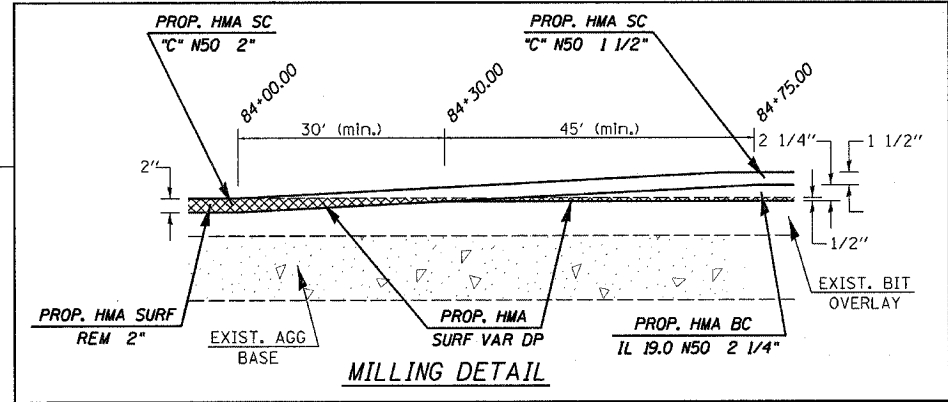
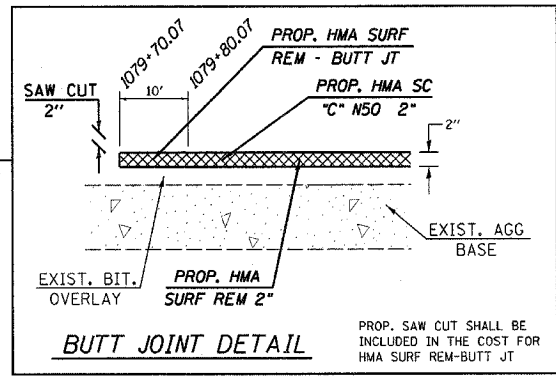
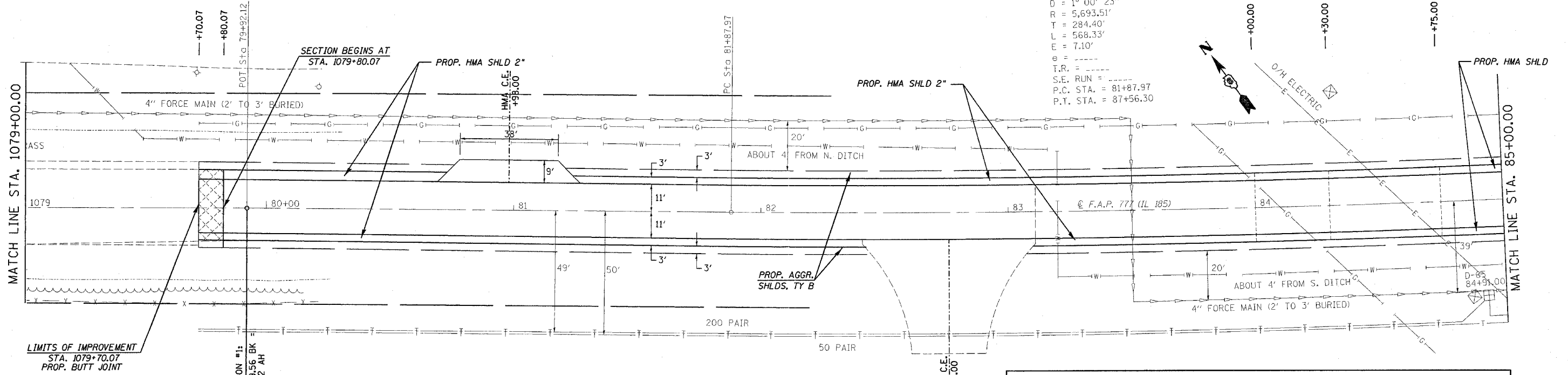


CONTRACT NO. 72693

F.A.P. RTE.	SECTION	COUNTY	TOTAL SHEETS	SHEET NO.
777	405RS-B	MONTGOMERY	75	20
STA. 1079+00.00		TO STA. 91+00.00		
FED. ROAD DIST. NO.		ILLINOIS FED. AID PROJECT		

EXIST. CURVE CURVE1  
 PI STA. = 84+72.37  
 $\Delta = 5^\circ 43' 09''$  (LT)  
 $D = 1^\circ 00' 23''$   
 $R = 5,693.51'$   
 $T = 284.40'$   
 $L = 568.33'$   
 $E = 7.10'$   
 $\theta =$   
 $T.R. =$   
 $S.E. RUN =$   
 P.C. STA. = 81+87.97  
 P.T. STA. = 87+56.30



REVISIONS	
NAME	DATE

ILLINOIS DEPARTMENT OF TRANSPORTATION  
**PLAN VIEW**  
 F.A.U. Route 777 (IL 185)  
 Section 405RS-4  
 MONTGOMERY COUNTY  
 SCALE: VERT. \_\_\_\_\_  
 HORIZ. \_\_\_\_\_  
 DATE: FEBRUARY 22, 2006  
 DRAWN BY: JWC  
 CHECKED BY: RSC

PLOT DATE = 12/9/2006  
 FILE NAME = c:\projects\4656802\shiplan.dgn  
 PLOT SCALE = 20.0000 / 1\"/>