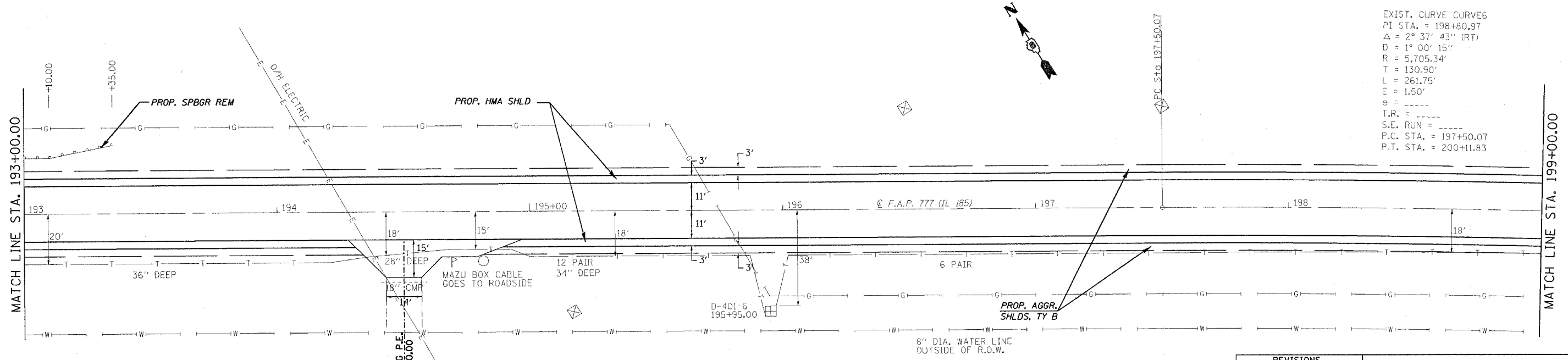
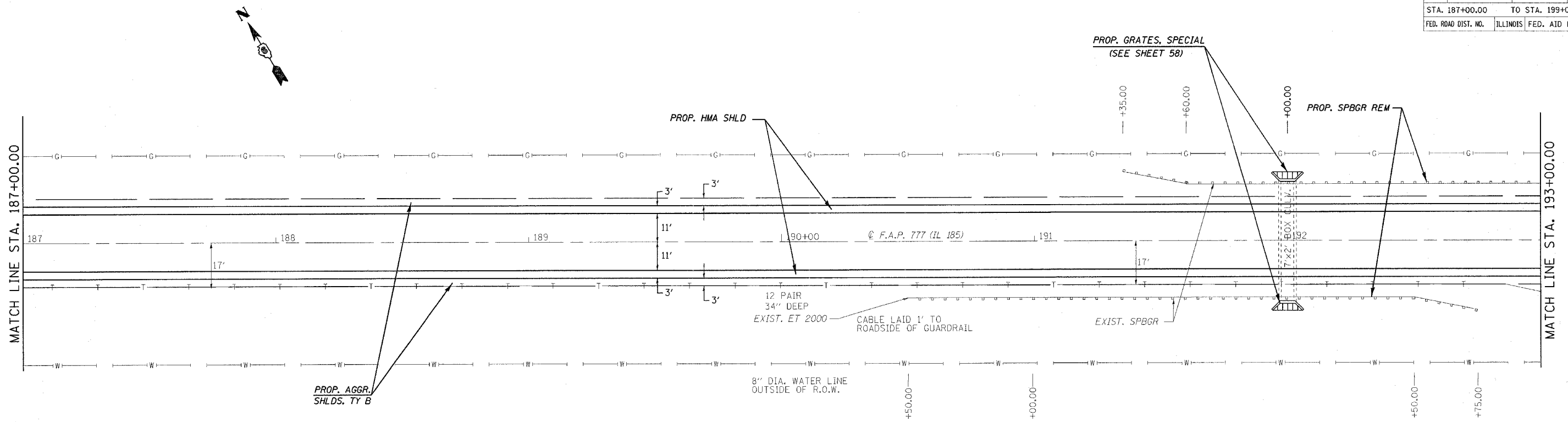


CONTRACT NO. 72693

|                     |                 |                   |                 |              |
|---------------------|-----------------|-------------------|-----------------|--------------|
| F.A.P. RTE. 777     | SECTION 405RS-8 | COUNTY MONTGOMERY | TOTAL SHEETS 75 | SHEET NO. 29 |
| STA. 187+00.00      |                 | TO STA. 199+00.00 |                 |              |
| FED. ROAD DIST. NO. | ILLINOIS        | FED. AID PROJECT  |                 |              |



EXIST. CURVE CURVE6  
 PI STA. = 198+80.97  
 $\Delta = 2^\circ 37' 43''$  (RT)  
 $D = 1^\circ 00' 15''$   
 $R = 5,705.34'$   
 $T = 130.90'$   
 $L = 261.75'$   
 $E = 1.50'$   
 $\theta =$   
 $T.R. =$   
 $S.E. RUN =$   
 $P.C. STA. = 197+50.07$   
 $P.T. STA. = 200+11.83$

| REVISIONS |      |
|-----------|------|
| NAME      | DATE |
|           |      |
|           |      |
|           |      |
|           |      |
|           |      |
|           |      |
|           |      |
|           |      |
|           |      |
|           |      |

ILLINOIS DEPARTMENT OF TRANSPORTATION

**PLAN VIEW**

F.A.U. Route 777 (IL 185)  
 Section 405RS-4  
 MONTGOMERY COUNTY

SCALE: VERT. \_\_\_\_\_  
 HORIZ. \_\_\_\_\_

DATE: FEBRUARY 22, 2006

DRAWN BY: JWC  
 CHECKED BY: RSC

PLOT DATE = 12/8/2006  
 FILE NAME = S:\proj\mcs\405RS-4\shiplan1.dgn  
 USER NAME = rsc