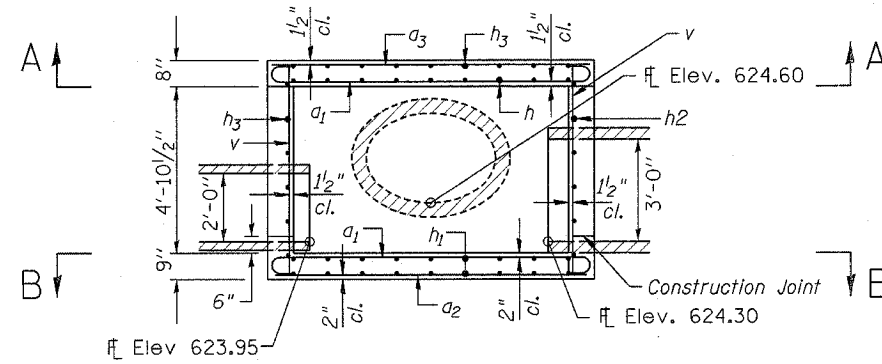


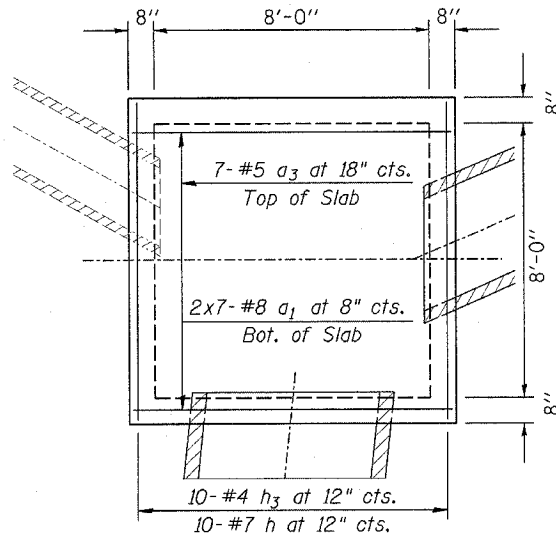
F.A.P. RTE.	SECTION	COUNTY	TOTAL SHEETS	SHEET NO.
777	405RS-4	MONTGOMERY	75	51
STA.		TO STA.		
FED. ROAD DIST. NO.		ILLINOIS FED. AID PROJECT		

BILL OF MATERIAL

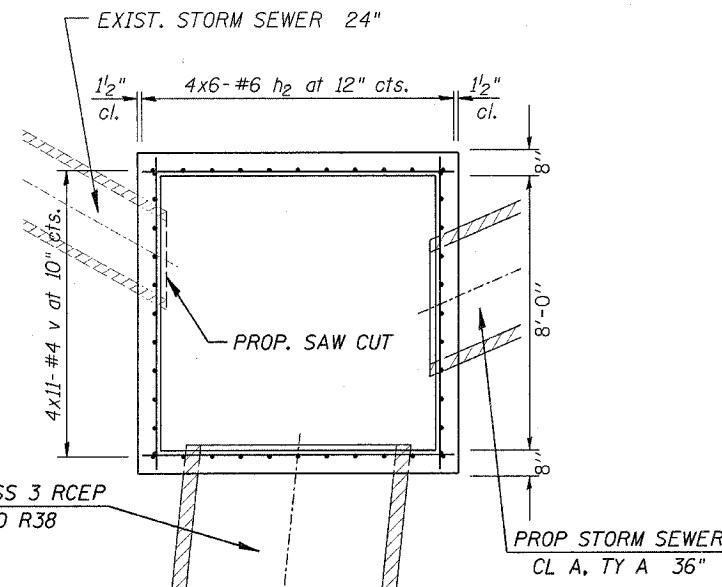
Bar	No.	Size	Length	Shape
a ₁	28	#8	12'-6"	
a ₂	11	#4	9'-1"	—
a ₃	7	#5	9'-1"	—
a ₄	8	#4	4'-0"	—
h	10	#7	9'-1"	—
h ₁	16	#5	9'-1"	—
h ₂	24	#6	9'-1"	—
h ₃	10	#4	9'-1"	—
v	44	#4	6'-3"	—
Concrete Box Culverts			Cu. Yd.	7.6
Reinforcement Bars			Pound	1,927



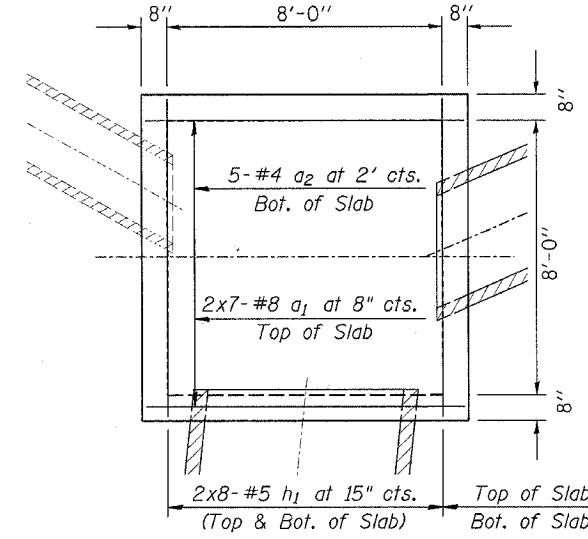
ELEVATION



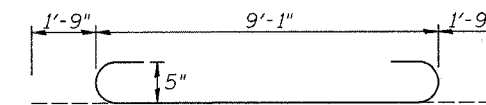
**SECTION A-A
(TOP SLAB)**



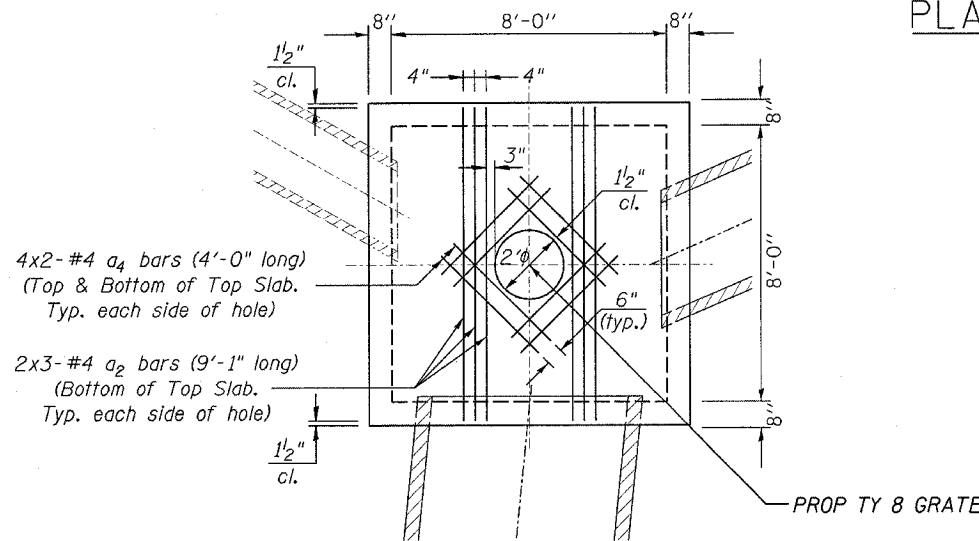
PLAN - SIDE WALLS



**SECTION B-B
(BOTTOM SLAB)**



BAR a₁



PLAN - TOP SLAB

NOTES:

THE SPECIAL REINFORCEMENT SHOWN FOR THE TOP SLAB OPENING SHALL BE PROVIDED IN ADDITION TO THE TYPICAL REINFORCING BASED ON AASHTO 259. TYPICAL TRANSVERSE AND LONGITUDINAL REINFORCING THROUGHOUT THE PROPOSED DROP BOXES MAY BE CUT TO ALLOW FOR THE OPENING OR HOLE.

CLASS MS CONCRETE SHALL BE USED THROUGHOUT

REINFORCEMENT BARS SHALL CONFORM TO THE REQUIREMENTS OF AASHTO M-42 OR M-53 GRADE 60.

PROPOSED SAW CUT AND DISPOSAL OF THE EXISTING STORM SEWER 24" THAT EXTENDS UNDER IL 127 AT STA 72+99.36 LT SHALL BE DONE WITH THE APPROVAL OF THE ENGINEER AND BE INCLUDED IN THE COST FOR THE REMOVAL OF EXISTING FLARED END SECTION.

REVISIONS	
NAME	DATE

ILLINOIS DEPARTMENT OF TRANSPORTATION
DRAINAGE DETAILS
 F.A.P. Route 777 (IL 185)
 Section 405RS-4
 MONTGOMERY COUNTY
 8'X8' DROP BOX
 (STA. 72+99.36, 56.18' LT)

SCALE: VERT. _____
 HORIZ. _____
 DATE: OCTOBER 2, 2006
 DRAWN BY: JWC
 CHECKED BY: RSC

PLOT DATE = 12/11/2006
 FILE NAME = c:\projects\4656802\detail.dgn
 PLOT SCALE = 20.0000 / IN.
 USER NAME = coxj