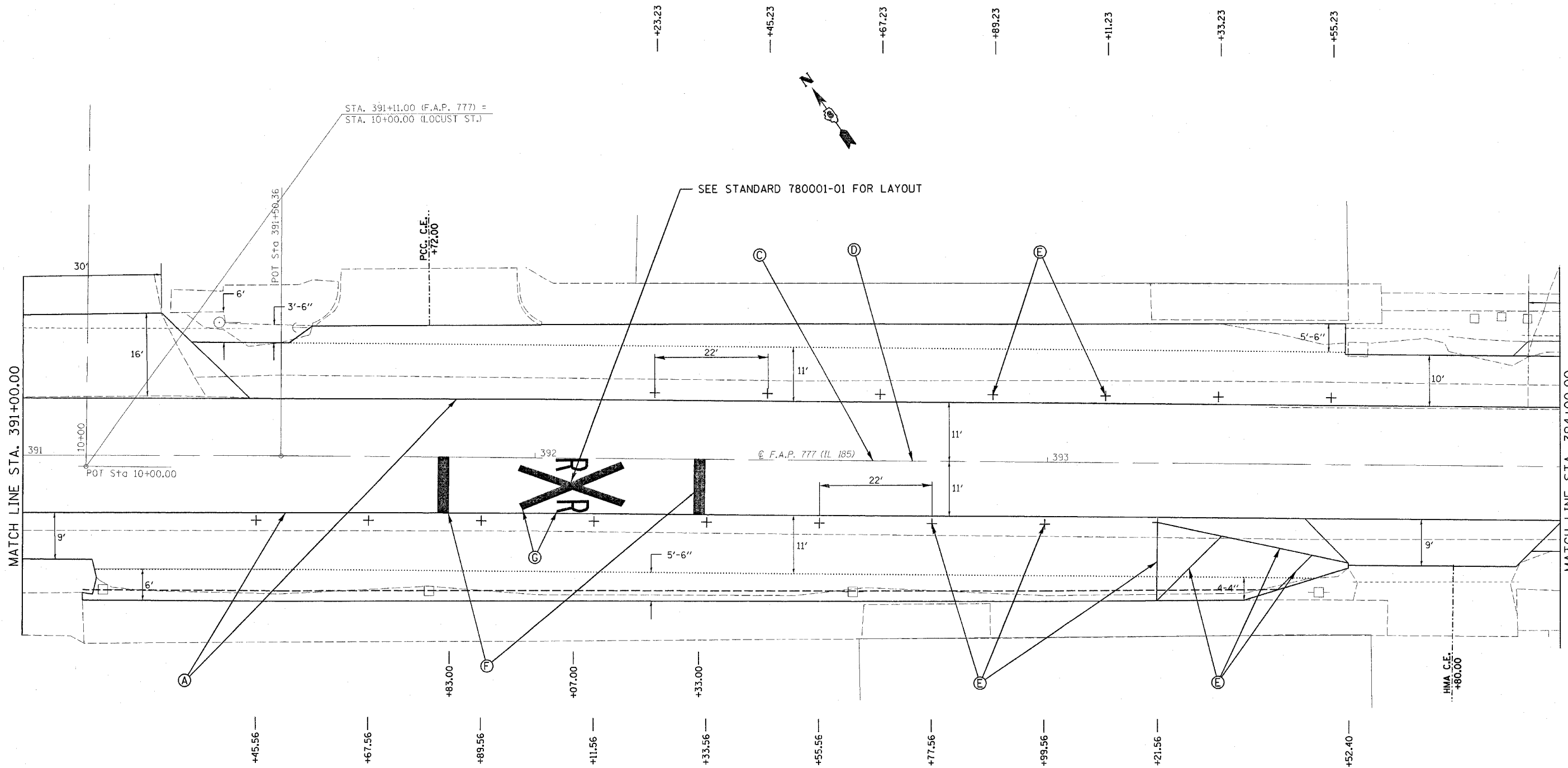


CONTRACT NO. 72693

F.A.P. RTE.	SECTION	COUNTY	TOTAL SHEETS	SHEET NO.
777	405RS-8	MONTGOMERY	75	54
STA. 391+00.00		TO STA. 394+00.00		
FED. ROAD DIST. NO.		ILLINOIS FED. AID PROJECT		



PAVEMENT MARKING LEGEND	
(THERMOPLASTIC)	
(A)	PAVEMENT MARKING - LINE - 5" WHITE (SOLID)
(B)	PAVEMENT MARKING - LINE - 5" DOUBLE YELLOW (SOLID)
(C)	PAVEMENT MARKING - LINE - 5" YELLOW (SOLID)
(D)	PAVEMENT MARKING - LINE - 5" YELLOW (SKIP-DASH)
(PERFORMED PLASTIC, TYPE B)	
(E)	PAVEMENT MARKING - LINE - 6" WHITE (SOLID)
(F)	PAVEMENT MARKING - LINE - 24" WHITE (SOLID)
(G)	PAVEMENT MARKING - LETTERS & SYMBOLS WHITE (SOLID)

REVISIONS	
NAME	DATE

ILLINOIS DEPARTMENT OF TRANSPORTATION

PAVEMENT MARKING DETAILS

F.A.U. Route 777 (IL 185)
 Section 405RS-4
 MONTGOMERY COUNTY

SCALE: VERT. _____
 HORIZ. _____
 DATE: JUNE 19, 2006

DRAWN BY: JWC
 CHECKED BY: RSC

PLOT DATE = 12/8/2006
 FILE NAME = c:\projects\4656802\shpavmarkingdetails.dgn
 PLOT SCALE = 10.0000' / 1" = 100.0000'
 USER NAME = coxjm