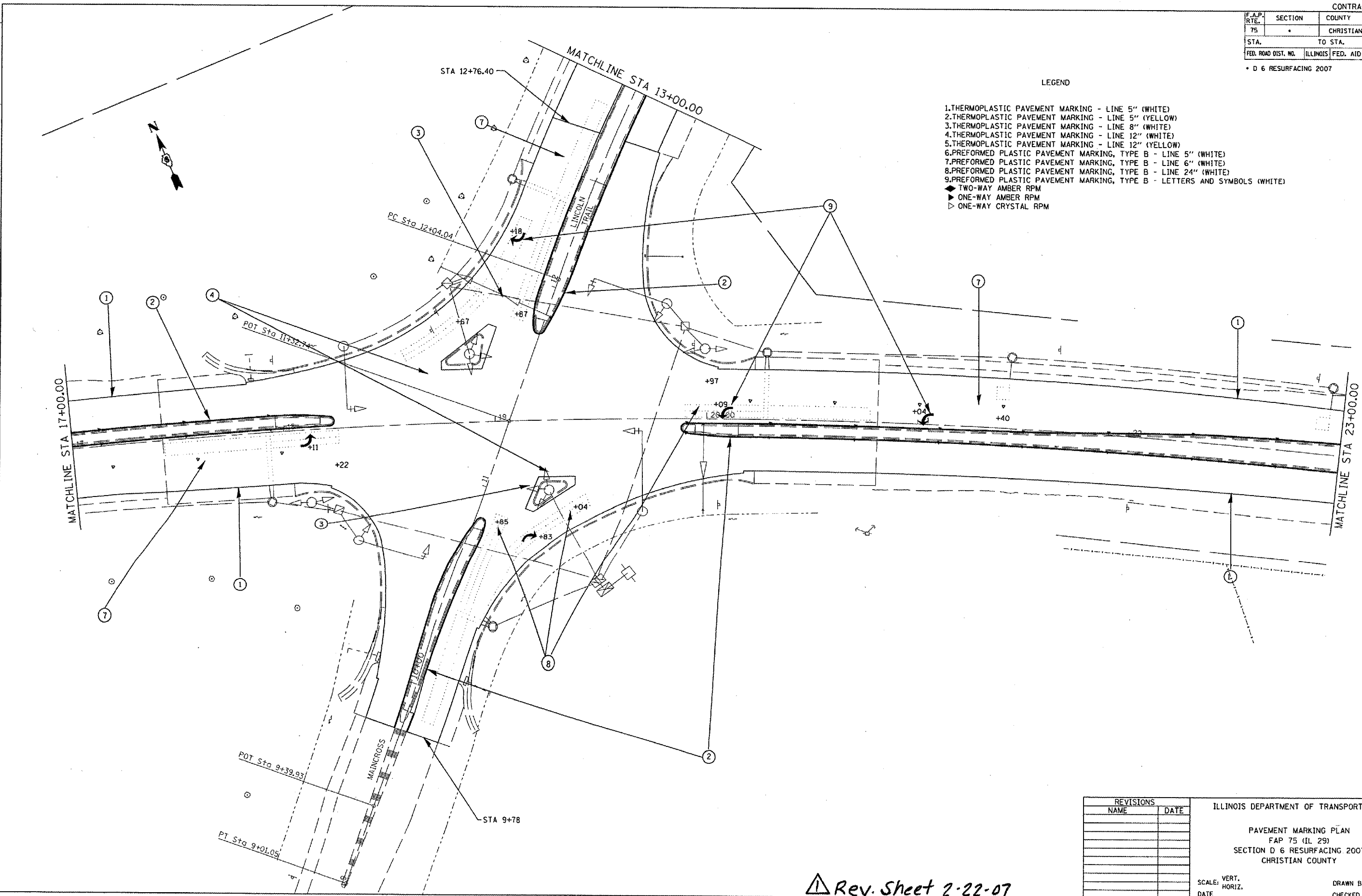


F.A.P. RTE.	SECTION	COUNTY	TOTAL SHEETS	SHEET NO.
75		CHRISTIAN	97	61
STA.		TO STA.		
FED. ROAD DIST. NO.		ILLINOIS FED. AID PROJECT		

• D 6 RESURFACING 2007

LEGEND

- 1.THERMOPLASTIC PAVEMENT MARKING - LINE 5" (WHITE)
- 2.THERMOPLASTIC PAVEMENT MARKING - LINE 5" (YELLOW)
- 3.THERMOPLASTIC PAVEMENT MARKING - LINE 8" (WHITE)
- 4.THERMOPLASTIC PAVEMENT MARKING - LINE 12" (WHITE)
- 5.THERMOPLASTIC PAVEMENT MARKING - LINE 12" (YELLOW)
- 6.PREFORMED PLASTIC PAVEMENT MARKING, TYPE B - LINE 5" (WHITE)
- 7.PREFORMED PLASTIC PAVEMENT MARKING, TYPE B - LINE 6" (WHITE)
- 8.PREFORMED PLASTIC PAVEMENT MARKING, TYPE B - LINE 24" (WHITE)
- 9.PREFORMED PLASTIC PAVEMENT MARKING, TYPE B - LETTERS AND SYMBOLS (WHITE)
- ◆ TWO-WAY AMBER RPM
- ▶ ONE-WAY AMBER RPM
- ▷ ONE-WAY CRYSTAL RPM



PLOT DATE = 2/21/2007  
 PLOT SCALE = 40:1  
 USER NAME = joughlinr1

REVISIONS	
NAME	DATE

ILLINOIS DEPARTMENT OF TRANSPORTATION  
 PAVEMENT MARKING PLAN  
 FAP 75 (IL 29)  
 SECTION D 6 RESURFACING 2007  
 CHRISTIAN COUNTY  
 SCALE: VERT. \_\_\_\_\_  
 HORIZ. \_\_\_\_\_  
 DATE \_\_\_\_\_  
 DRAWN BY \_\_\_\_\_  
 CHECKED BY \_\_\_\_\_

Rev. Sheet 2-22-07