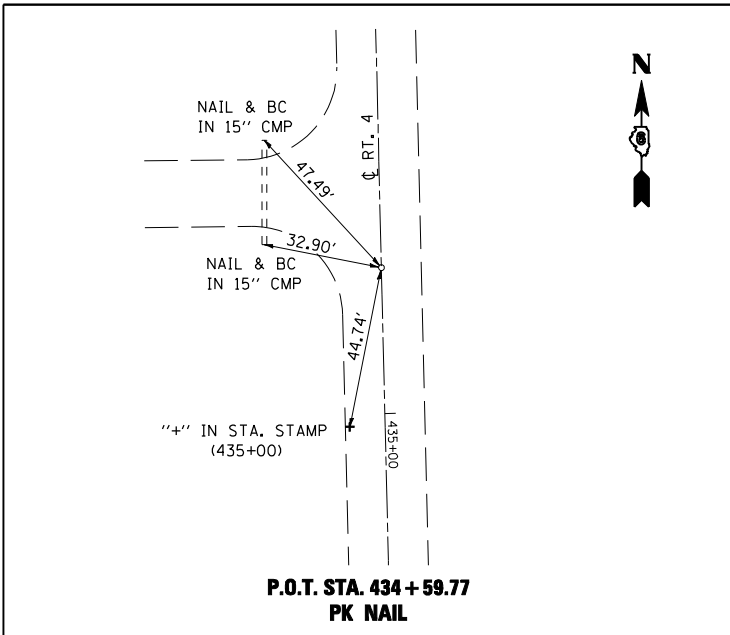
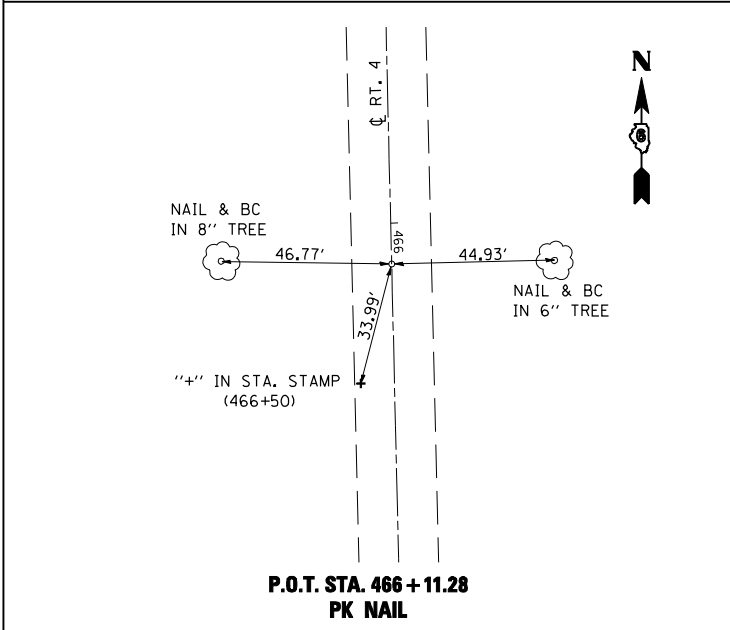
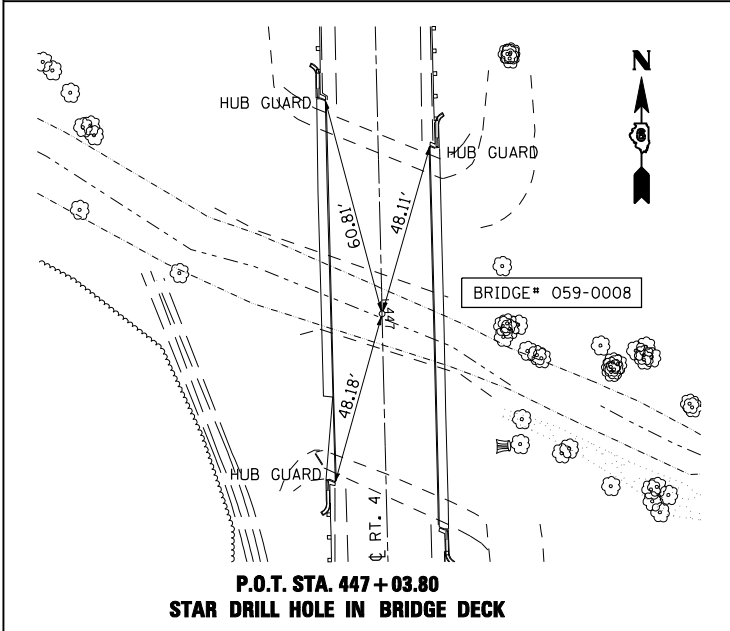


F.A.P. RTE.	SECTION	COUNTY	TOTAL SHEETS	SHEET NO.
662	*	MACOUPIN	66	12
STA.		TO STA.		
FED. ROAD DIST. NO.	ILLINOIS	FED. AID PROJECT		
• (V,T) B-2				



BM #20A : TO REACH FROM INTERSECTION OF DEERFIELD RD. & OLD IL RTE 4,  
 PROCEED SOUTH 507' TO BRIDGE 059-0008 OVER HONEY CREEK,  
 BENCH IS LOCATED ON S.W. CORNER OF HUB GUARD.  
 STA. 447+50.11, 15.2' RT.  
 ELEV. = 602.96



REVISIONS	
NAME	DATE

ILLINOIS DEPARTMENT OF TRANSPORTATION

**BENCHMARKS & CROSS TIES**

SCALE: VERT.      DRAWN BY  
 HORIZ.              CHECKED BY  
 DATE

•DGN-SPEC•  
 •DATE-TIME•  
 •REF01