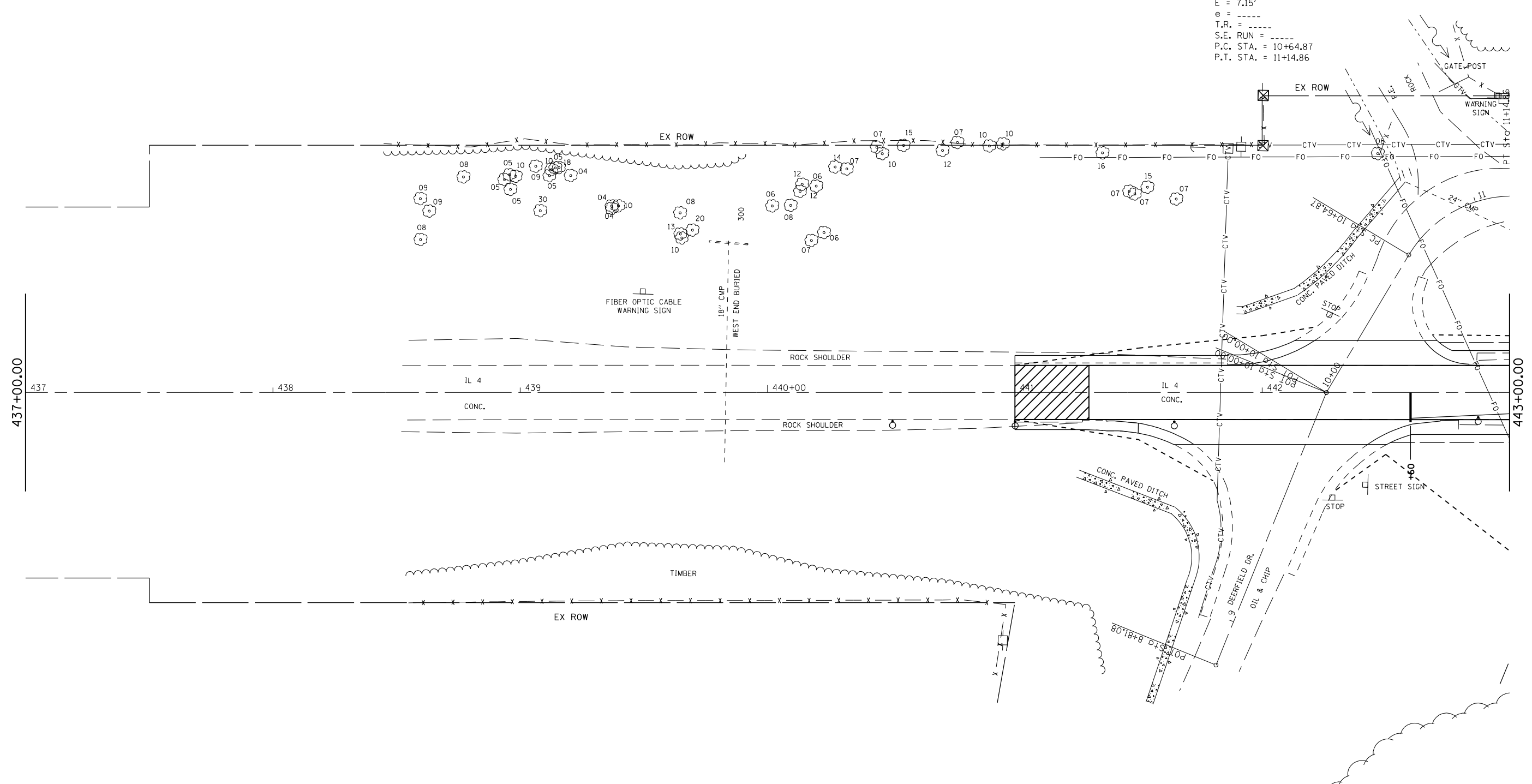


F.A. RTE.	SECTION	COUNTY	TOTAL SHEETS	SHEET NO.
662		MACOUPIN	66	19
STA.		TO STA.		
FED. ROAD DIST. NO.	ILLINOIS	FED. AID PROJECT		

EXIST. CURVE 5144
 PI STA. = 10+92.29
 $\Delta = 58^\circ 27' 58''$ (RT)
 $D = 116^\circ 56' 44''$
 $R = 48.99'$
 $T = 27.42'$
 $L = 49.99'$
 $E = 7.15'$
 $e = \text{-----}$
 $T.R. = \text{-----}$
 $S.E. \text{ RUN} = \text{-----}$
 $P.C. \text{ STA.} = 10+64.87$
 $P.T. \text{ STA.} = 11+14.86$

• (V,T) B-2



PLOT DATE = 1/30/2007
 FILE NAME = c:\projects\6652685\shs\stage1.dgn
 PLOT SCALE = 42.3525' / IN.
 REFERENCE = #REF#

REVISIONS	
NAME	DATE

ILLINOIS DEPARTMENT OF TRANSPORTATION

STAGE 1
PLAN VIEW

SCALE: VERT.
 HORIZ.
 DATE

DRAWN BY BDK
 CHECKED BY JCN