

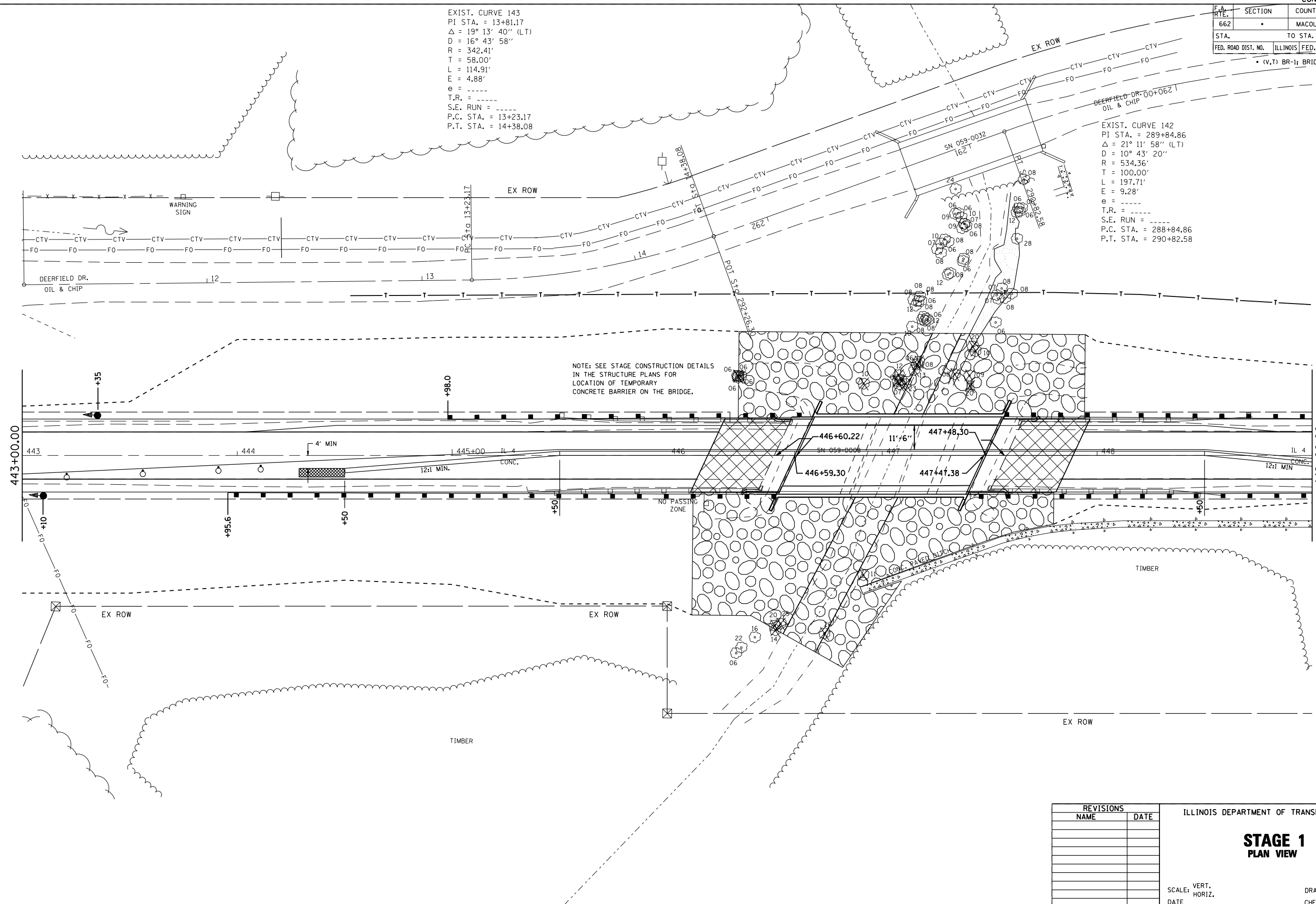
F.A. RTE.	SECTION	COUNTY	TOTAL SHEETS	SHEET NO.
662		MACOUPIN	66	20
STA.		TO STA.		
FED. ROAD DIST. NO.		ILLINOIS FED. AID PROJECT		

EXIST. CURVE 143  
 PI STA. = 13+81.17  
 $\Delta = 19^\circ 13' 40''$  (LT)  
 $D = 16^\circ 43' 58''$   
 $R = 342.41'$   
 $T = 58.00'$   
 $L = 114.91'$   
 $E = 4.88'$   
 $e = \text{---}$   
 $T.R. = \text{---}$   
 $S.E. \text{ RUN} = \text{---}$   
 $P.C. \text{ STA.} = 13+23.17$   
 $P.T. \text{ STA.} = 14+38.08$

EXIST. CURVE 142  
 PI STA. = 289+84.86  
 $\Delta = 21^\circ 11' 58''$  (LT)  
 $D = 10^\circ 43' 20''$   
 $R = 534.36'$   
 $T = 100.00'$   
 $L = 197.71'$   
 $E = 9.28'$   
 $e = \text{---}$   
 $T.R. = \text{---}$   
 $S.E. \text{ RUN} = \text{---}$   
 $P.C. \text{ STA.} = 288+84.86$   
 $P.T. \text{ STA.} = 290+82.58$

(V,T) BR-1: BRIDGE REMOVAL

NOTE: SEE STAGE CONSTRUCTION DETAILS  
 IN THE STRUCTURE PLANS FOR  
 LOCATION OF TEMPORARY  
 CONCRETE BARRIER ON THE BRIDGE.



REVISIONS	
NAME	DATE

ILLINOIS DEPARTMENT OF TRANSPORTATION

**STAGE 1  
 PLAN VIEW**

SCALE: VERT.  
 HORIZ.  
 DATE

DRAWN BY: BOK  
 CHECKED BY: JCN

PLOT DATE = 1/30/2007  
 FILE NAME = c:\projects\652685\shs\stage1.dgn  
 PLOT SCALE = 42.3525' / IN.  
 REFERENCE = #REF#