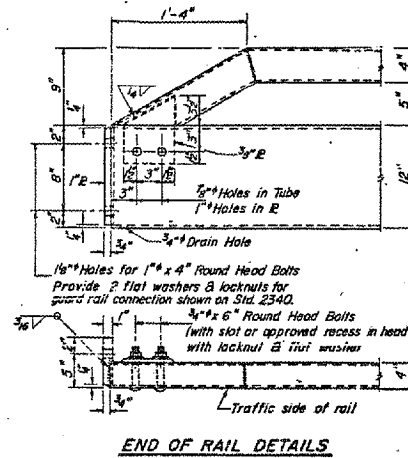
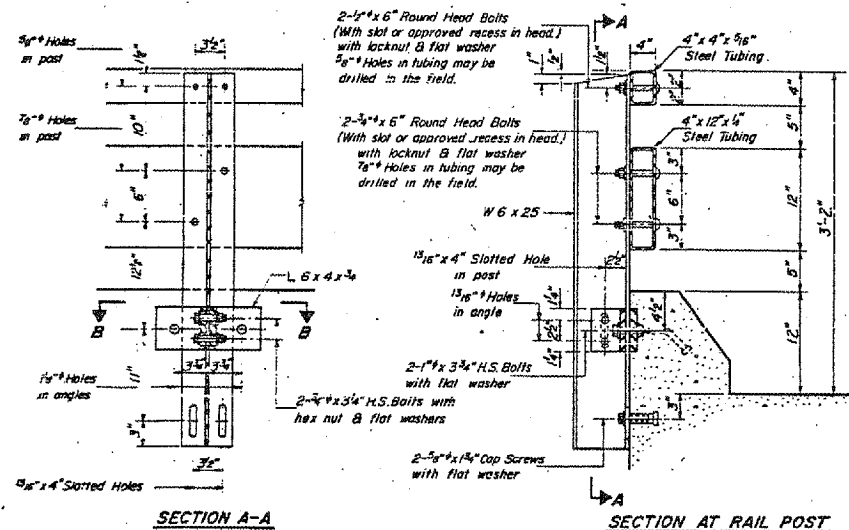
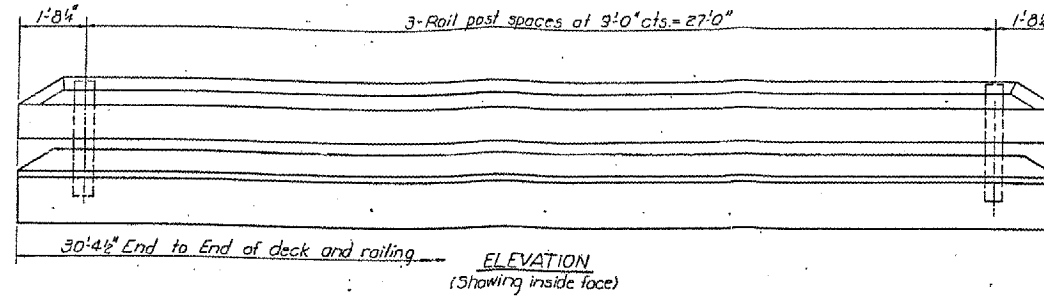


STATE OF ILLINOIS  
DEPARTMENT OF TRANSPORTATION

PROJECT NO.	20BR	DATE	19	15
NO.	3	DESIGNER	HANCOCK	
SHEET NO. 5		9 SHEETS		



**NOTES**

Hollow structural steel tubing shall conform to the requirements of ASTM designation A-500 Grade B Structural Steel Tubing.

All other steel shapes and plates shall conform to the requirements of AASHTO M-183 except posts and angles shall conform to AASHTO M-223, Grade 50. Bolts, cap screws, and nuts shall conform to the requirement of ASTM designation A-307 except for high strength bolts, nuts and washers noted which shall conform to AASHTO M-164.

All bolts, nuts, cap screws, washers and lock washers shall be galvanized in accordance with AASHTO M-232.

All posts, railing, rail splices, anchor devices and angles shall be galvanized after shop fabrication in accordance with AASHTO M-111 and ASTM A-385. Galvanized rail shall not be painted.

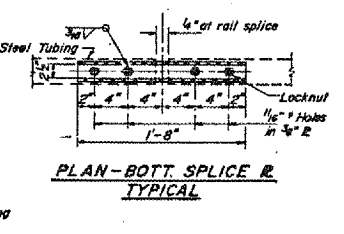
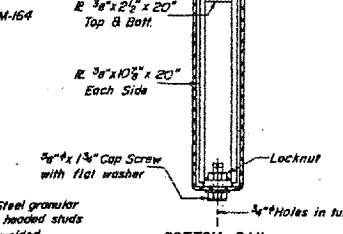
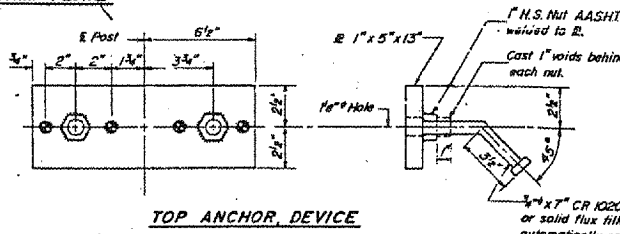
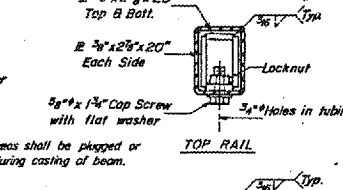
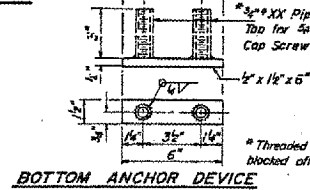
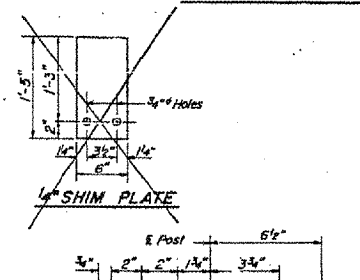
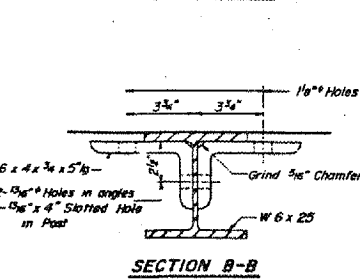
Railing shall be in accordance with Section 50B of the Standard Specifications, except as noted, and shall be paid for at the contract unit price per linear foot for STEEL RAILING, TYPE T-1.

All field drilled holes shall be coated with an approved zinc rich paint before erection.

The lower portion of the post flange in contact with concrete shall receive two coats of asphalt paint conforming to Section 714.08 Type B or place 1/2" fabric bearing pad between the post and concrete.

The 3/4" high strength bolts used to connect the 6 x 4 x 3/4 angles to the post shall be tightened in accordance with Article 507D(1)(3) of the Standard Specifications. The 1" high strength bolts connecting the angles to the concrete shall be tightened to a snug fit and given an additional 1/2 turn. The 5/8" cap screws in bottom of posts shall be tightened to a snug fit only.

All railing and accessories shall be painted with lead silico chromate paint system except that the final field coat shall be mirror finish coat. See Special Provisions.



**BILL OF MATERIAL**

Item	Unit	Total
Steel Railing, Type T-1	Lin. Ft.	61

**TYPE T-1  
STEEL RAILING**  
EA. RT. 310 SEC. 120BR-B  
HANCOCK COUNTY  
STA. 713123.00

DESIGNED Lance Kidd  
CHECKED M.A. Ryan  
DRAWN R. Daly  
CHECKED M.R.

September 16, 1981  
EXAMINED James J. Ryan  
APPROVED

R-24A 8-30-80 (11'-0" Maximum Post Spacing)

SN 034-0025  
EXISTING GUARDRAIL PLAN  
FOR INFORMATION ONLY  
(NOT TO SCALE)