

F.A.I. RTE.	SECTION	COUNTY	TOTAL SHEETS	SHEET NO.
55		SANGAMON	26	1

* - D-6 CABLE MEDIAN BAR #2

STATE OF ILLINOIS
DEPARTMENT OF TRANSPORTATION
DIVISION OF HIGHWAYS

PROPOSED HIGHWAY PLANS

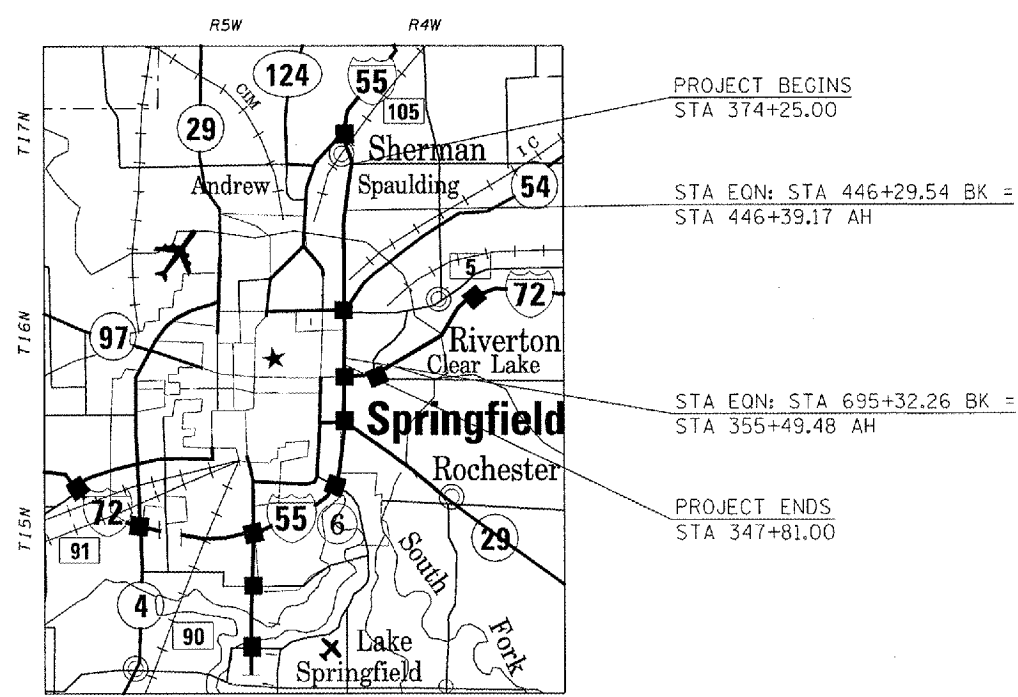
FAI 55 (I-55)
SECTION D-6 CABLE MEDIAN BAR #2
SANGAMON COUNTY
PROJECT # HSIP-055-3(139)102
C-96-515-07

INDEX OF SHEETS

- 1 COVER SHEET
- 2 GENERAL NOTES
- 3 SUMMARY OF QUANTITIES
- 4-8 TYPICAL SECTIONS
- 9-10 SCHEDULES OF QUANTITIES
- 11-22 PLAN SHEETS
- 23 DETAILS
- 24 GRADING DETAIL
- 25 CABLE GUARD MARKER DETAIL
- 26 GIBRALTAR CABLE BARRIER DETAILS

HIGHWAY STANDARDS

000001-04	701106-01
630001-07	701400-02
635006-02	701406-04
635011-01	702001-06
701101-01	



GROSS LENGTH OF PROJECT = 32,866.11 FEET = 6.22 MILES
NET LENGTH OF PROJECT = 32,866.11 FEET = 6.22 MILES

ADT - 38,800

STATE OF ILLINOIS
DEPARTMENT OF TRANSPORTATION
DIVISION OF HIGHWAYS

SUBMITTED *Dec 14, 2006*

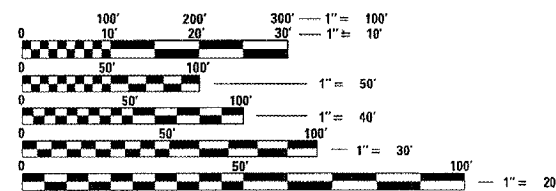
Chris E. Harn
DEPUTY DIRECTOR OF HIGHWAYS, REGION ENGINEER

February 2, 2007
Eric E. Harn
ENGINEER OF DESIGN AND ENVIRONMENT

February 2, 2007
Malcolm R. See, P.E.
DIRECTOR OF HIGHWAYS, CHIEF ENGINEER

**PRINTED BY THE AUTHORITY
OF THE STATE OF ILLINOIS**

PROJECT ENGINEER: SAL MADONIA (217) 782-4761
SQUAD LEADER: JEFFREY P. MYERS (217) 524-7940



FULL SIZE PLANS HAVE BEEN PREPARED USING STANDARD ENGINEERING SCALES. REDUCED SIZED PLANS WILL NOT CONFORM TO STANDARD SCALES. IN MAKING MEASUREMENTS ON REDUCED PLANS, THE ABOVE SCALES MAY BE USED.

J.U.L.I.E.
JOINT UTILITY LOCATION INFORMATION FOR EXCAVATION
1-800-892-0123

CONTRACT NO. 72A56