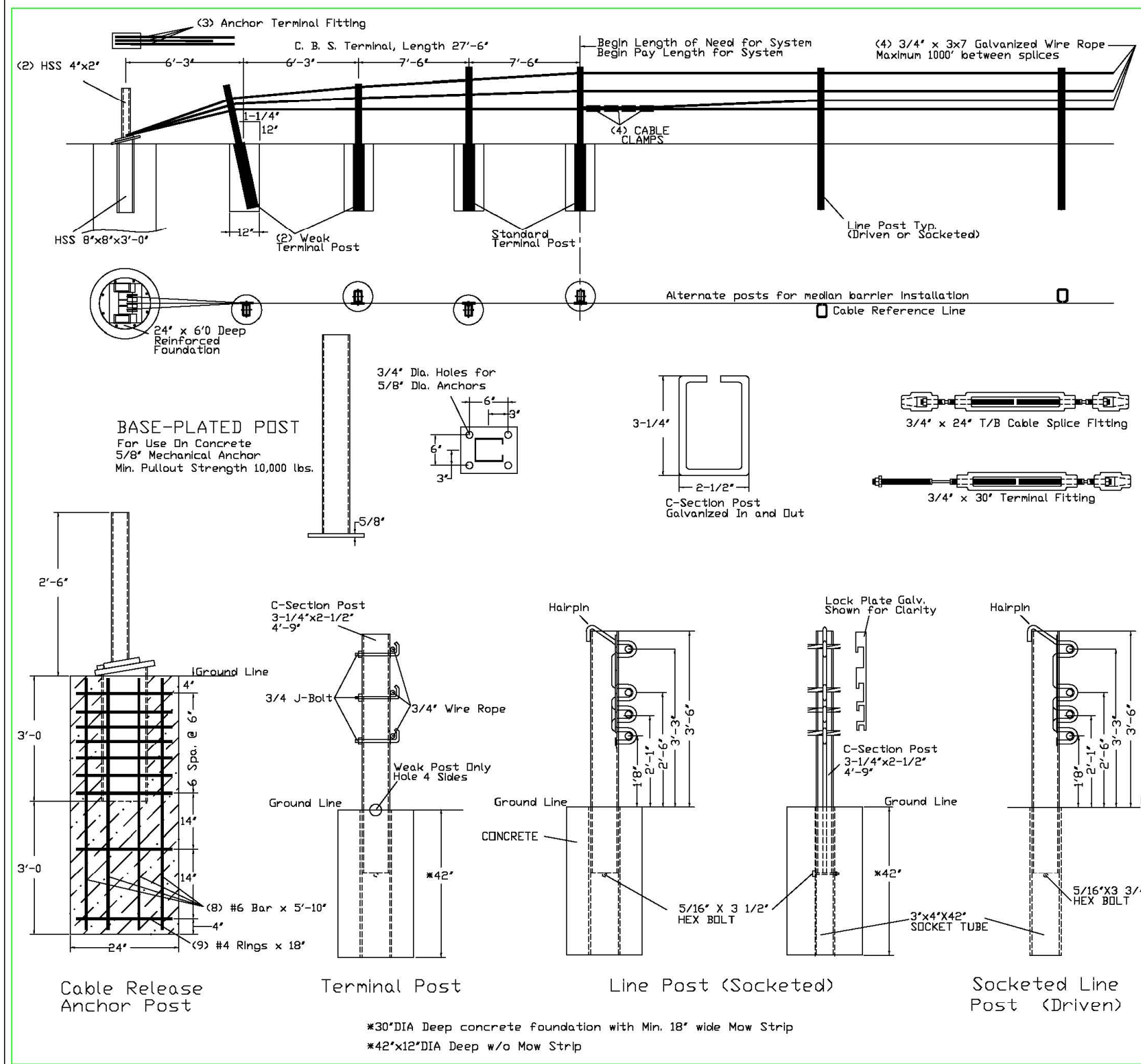


F.A.I. RTE.	SECTION	COUNTY	TOTAL SHEETS	SHEET NO.
55	.	SANGAMON	26	26
STA.		TO STA.		
FED. ROAD DIST. NO.		ILLINOIS FED. AID PROJECT		

* - D-6 CABLE MEDIAN BAR #2



GENERAL NOTES

- For additional information contact Gibraltar, Inc. at 1-800-495-8957, or see the manufacturer's product manual.
- All concrete shall be minimum 2500 PSI.
- Alternate Post for bi-directional traffic flow. If installed for traffic in one direction install cables on traffic side of posts.
- The Cable Barrier System shall be installed on median shoulders or on depressed medians with slopes of 6:1 or flatter.
- The Cable Barrier System is accepted by the FHWA Test Level - 4
- See the MUTCD for proper "Barrier" delineation
- Rock Clause: Where solid rock is encountered:
 - For socketed post, continue digging 12" diameter, 15" deep into rock or the required plan depth whichever comes first.
 - For driven post, core drill a 4" diameter hole 18" deep into rock or the required plan depth, whichever comes first.
 - For Anchor post, continue digging 24" diameter, 30" deep into rock or the required plan depth, whichever comes first.
- Every component to be galvanized.

Tension (lbs)	Force (lbs)
-10F	8000
0	7600
10	7200
20	6800
30	6400
40	6000
50	5600
60	5200
70	4800
80	4400
90	4000
100	3600
110	3200

Allowable Deviation from Chart +/- 200 lbs/force

Deflection (ft)	Post Spacing (ft)
9'3"	30.0 FT
9'	28.0 FT
8'	20.0 FT
7'	12.0 FT
6'8"	10.0 FT

Cable Barrier System
Patent Pending

GIBRALTAR
320 Southland Road
Burnet, Texas 78611
1-800-495-8957

TL-4 4 CABLE SYSTEM DATE: 10/13/06 DRAFTER: EJ

PLOT DATE = 12/13/2006
 FILE NAME = c:\p\projects\4653806\shideout\adgn
 PLOT SCALE = 211.7647 / IN.
 USER NAME = laughlin-1

REVISIONS	
NAME	DATE

ILLINOIS DEPARTMENT OF TRANSPORTATION
GIBRALTAR CABLE BARRIER DETAILS

FAI 55 (I-55)
SECTION D-6 CABLE MEDIAN BAR #2
SANGAMON COUNTY

SCALE: VERT. DRAWN BY
HORIZ. CHECKED BY
DATE