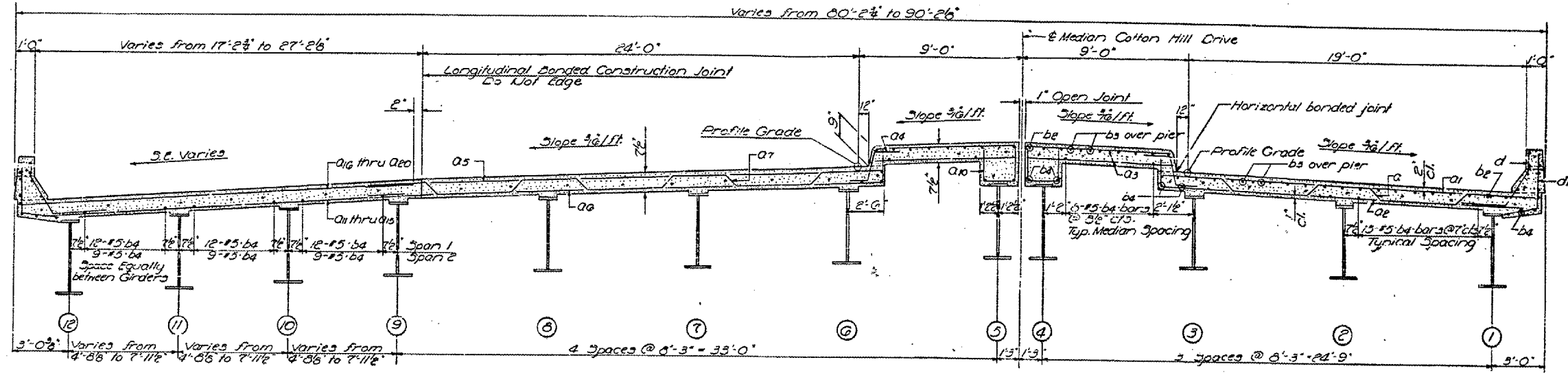


STATE OF ILLINOIS
DEPARTMENT OF TRANSPORTATION

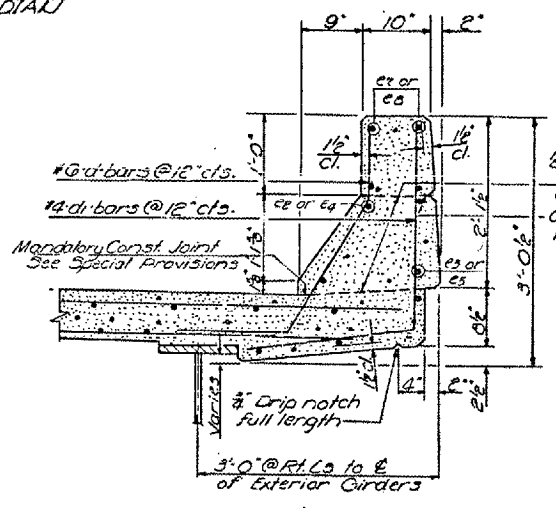
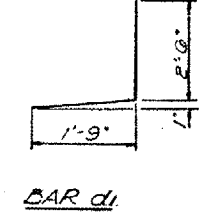
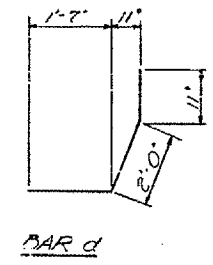
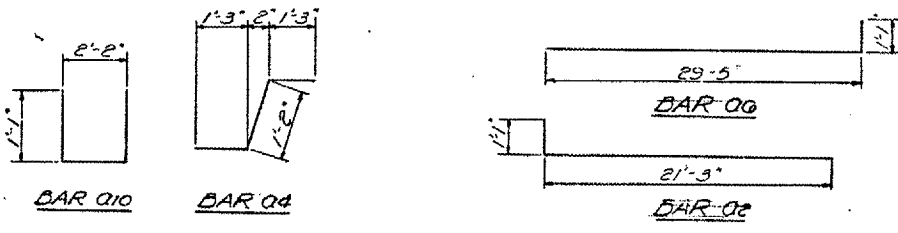
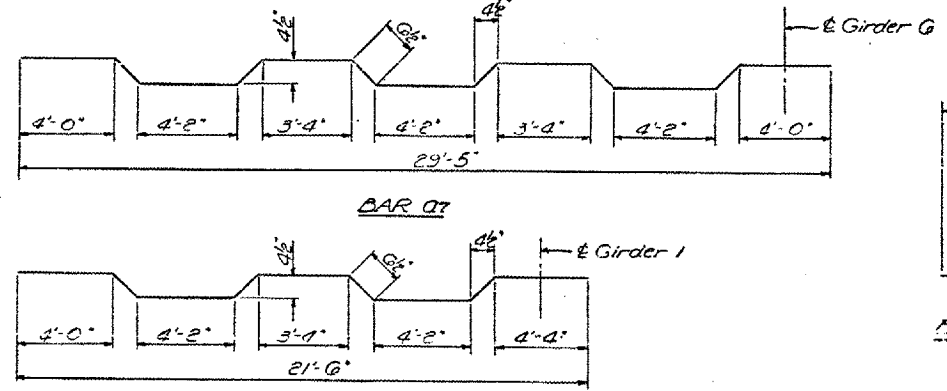
SHEET 7 OF 9

STATE OF ILLINOIS
DEPARTMENT OF PUBLIC WORKS & BUILDINGS
DIVISION OF HIGHWAYS

DATE	BY	CHKD	APPD	SHEET NO.
1-15-55	248			15
SANGAMON				45
ILL. ROAD DIST. NO. 7				18



CROSS SECTION
LOOKING WEST AT RT.
ANGLES TO E. MEDIAN



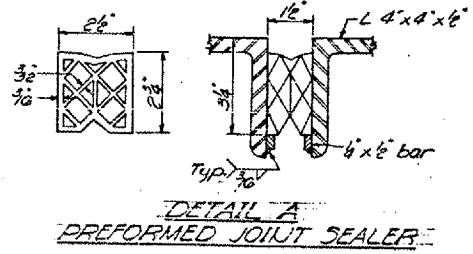
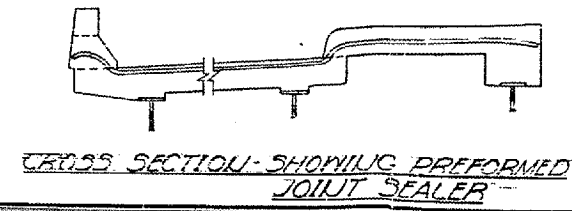
BILL OF MATERIAL

Bar No.	Size	Length	Shape
a	171 #8	22'-2"	
Q1	150 #8	21'-8"	
Q2	100 #8	22'-3"	
Q3	144 #8	7'-7"	
Q4	102 #5	3'-8"	
Q5	151 #8	23'-0"	
Q6	181 #8	30'-0"	
Q7	170 #8	30'-3"	
Q8	37E #5	4'-4"	
Q11	70 #8	24'-0"	
Q12	70 #8	22'-0"	
Q13	70 #8	20'-0"	
Q14	70 #8	18'-0"	
Q15	71 #8	18'-0"	
Q16	70 #8	23'-3"	
Q17	70 #8	23'-3"	
Q18	70 #8	21'-3"	
Q19	70 #8	19'-3"	
Q20	71 #8	17'-3"	
b2	630 #5	28'-0"	
b3	86 #8	39'-0"	
b4	739 #5	32'-0"	
d	380 #8	4'-0"	
di	300 #4	4'-3"	
Class X Concrete Cu. Yds.			421.9
Structural Steel Lbs.			433,650
Reinforcement Bars Lbs.			134,790
Prefabricated Joint Sealer Lin. Ft.			174

DESIGNED *James M. Force*
CHECKED *I. Kaper*
DRAWN *Jacobs Jr*
CHECKED *I.K.*

EXAMINED *[Signature]*
PASSED *[Signature]*
APPROVED *[Signature]*

Jan. 15 1958



CONTRACT 72A70
SN 084-0116
EXISTING BRIDGE PLANS
FOR INFORMATION ONLY
(NOT TO SCALE)